

Product datasheet for **RC203925**

ZUP1 (NM_145062) Human Tagged ORF Clone

Product data:

Product Type:	Expression Plasmids
Product Name:	ZUP1 (NM_145062) Human Tagged ORF Clone
Tag:	Myc-DDK
Symbol:	ZUP1
Synonyms:	C6orf113; DUB; ZUFSP
Mammalian Cell Selection:	Neomycin
Vector:	pCMV6-Entry (PS100001)
E. coli Selection:	Kanamycin (25 ug/mL)



[View online »](#)

ORF Nucleotide Sequence:

>RC203925 ORF sequence
 Red=Cloning site Blue=ORF Green=Tags(s)

TTTTGTAATACGACTCACTATAGGGCGGCCGGGAATTCGTCGACTGGATCCGGTACCGAGGAGATCTGCC
 GCC**CGGATCGCC**

ATGCTTCTCTGTAATATTTGTGGTGAACAGTAACCTCAGAACCAGACATGAAAGCTCACCTAATTGTTCA
 ACATGGAAAGTAAATTATATGTCCATTTTGAAGTTGTGAGGTGAATTATGATGAAATGTGTTTTCA
 TATCGAAACAGCTCATTTTGTAGCAGAATACACTTGAAAGAACTTTGAGAGGATAAATACAGTACAATAT
 GGAAGTTCAGATAACAAGAAAGACAACACCCTACAGTGTGGAATGGAAGTTAATCAAGTATTCTTTCAG
 GTTGTGCATCTAATCATCAAAAAATTCAGCTCAAAACCTGACTAAAGATAGTACTTTAAAAATGAAGG
 CTTCTATTCAGAGAACTTAAGTGAATCTAGAAAATTCCTGAAAAGTAGGGAAAAACAGTCCAGCCTGACC
 GAAATAAAAGGATCTGTTTATGAAACAACATACAGTCTCCTGAATGTCCATTCTGTGAAAAATAGAGG
 AGCACAGTGAAGATATGGAAGTCAATGTGAAAACAAGCATGCCAATCTTTTAGACATTCATTGGAAGA
 CTGTGATCAACCACTCTATGATTGTCCTATGTGTGGGCTCATATGTACAAATTACCATATCTTTCAGGAA
 CATGTTGACTTGCAATTTGGAAGAAAACAGCTTTCAGCAAGGCATGGATAGAGTCCAGTGTCTGGTGATC
 TACAATTGGCTCACCACTTTCAGCAAGAAGAAGACAGAAAAGAGGAGATCTGAAGAATCAAGACAAGAAAT
 AGAAGAATTTTCAGAAAGTGCAGAGACAATATGGTTTAGATAAATCTGGAGGATACAAACAACAACACTA
 CGAAATATGGAGATAGAAGTAAATAGGGGAAGAATGCCTCCATCTGAATTCATAGGAGAAAAAGCTGATA
 TGATGGAATCATTAGCTCTTGGTTTTGACGATGGAAAAACAAAACTCCGGAATTATTGAAGCACTTCA
 TAGGATATATCAGAATGCTGCCACAGATGTGAGACGGGTGGCTTTCTCAGTGGTGGATCACTTTTCAT
 TCATCTTTAGGCGACAAAGGTTGGGTTGGTTACAGAAATTTCCAAATGCTACTTTTCATCATTATTAC
 AAAATGATGCTTACAACGATTGCTTAAAAGGTATGTTGATTCTTGCATTCCAAAAATCAATCTATGAT
 TGAAGATGCATGGAAGGAAGGTTTTGATCCTCAGGGGGCCTCTCAACTAATAACAGTTACAGGGAACA
 AAGGCCTGGATTGGAGCATGTGAAGTATATATACTCCTGACCTCCCTAAGGGTAAAGTGTATATTGTTG
 ATTTTCACAAATCAACTGGTCTTTGGGTACACACCCTCGCTTATTTGAATGGATATTGAACTATTATTC
 TTCAGAGGGAGAAGGAGTCCAAAGGTAGTGTGTACATCTAAACCTCCTATCTATCTTCAGCATCAAGGT
 CACAGTCAACTGTTATTGGAATTGAAGAGAAAAAACCGAACATTATGCTTACTAATACTTGTCTGCTG
 GATGCTCTTCGAGAAATGCAGAAATTTAAAGCAAGACATAGAGGCTAGCAGTCTCAAGCAACTTCG
 GAAATCTATGGGAAATTTAAACATAAGCAATACCAGATATTGGCAGTAGAGGGTCTCTTCTCTAGAG
 GAGAACTTGCCAGGAGACAAGCTTCTCAAGTCTTTACAGCCGAGAAGATTCT

ACGCGTACGCGGCCGCTCGAGCAGAAACTCATCTCAGAAGAGGATCTGGCAGCAAATGATATCCTGGATT
 ACAAGGATGACGACGATAAGGTTTAA

Protein Sequence:

>RC203925 protein sequence
 Red=Cloning site Green=Tags(s)

MLSCNICGETVTSEPMKAHLIVHMESEIICPFCKLSGVNYDEMCFHIETAHFEQNTLERNFERINTVQY
 GTSNDKNDNTLQCGMEVNSSILSGCASNHPKNSAQNLTkdSTLKHegfySenlTESRkFLKSREKQSSLT
 EIKGSVYETTYSPPECPFCGKIEEHSEDMETHVTKKHANLLDIPLedCDQPLyDCPMcGLICTNYHILQE
 HVDLHLEENSFQQGMDRVQCSGDLQLAHQLQEEEDRKRSEESRQIEEFQKLQRQYGLDnSGGYKQQQL
 RNMEIEVNRGRMPPEFHRKADMMESLALGFDDGKTKTSGIIEALHRYQNAATDVRrVWLSSVVDHFH
 SSLGDKGWGCGYRNFQMLLSSLLQNDAYNDCLKGMLIPCIPKIQSMIEDAWKEGFDpQGASQLNnRLQGT
 KAWIGACEVYIILLTSLRVKCHIVDFHKSTGPLGTHPRLFEWILNYYSSeGEGSPKVVCTSKPPIYLQHqG
 HSRTVIGIEEKNRtLCLLILDpGCPsREMqKLLKQDIEASSLkQLRkSMGNLkHKQYQILAVEGALSLE
 EKLARRQASQVFTAeKIP

TRTRPLEQKLISEEDLAANDILDYKDDDDKV

Chromatograms:

https://cdn.origene.com/chromatograms/mk6130_d12.zip

Restriction Sites:

Sgfl-Mlul

Cloning Scheme:


ACCN: NM_145062

ORF Size: 1734 bp

OTI Disclaimer: The molecular sequence of this clone aligns with the gene accession number as a point of reference only. However, individual transcript sequences of the same gene can differ through naturally occurring variations (e.g. polymorphisms), each with its own valid existence. This clone is substantially in agreement with the reference, but a complete review of all prevailing variants is recommended prior to use. [More info](#)

OTI Annotation: This clone was engineered to express the complete ORF with an expression tag. Expression varies depending on the nature of the gene.

Components: The ORF clone is ion-exchange column purified and shipped in a 2D barcoded Matrix tube containing 10ug of transfection-ready, dried plasmid DNA (reconstitute with 100 ul of water).

Reconstitution Method:

1. Centrifuge at 5,000xg for 5min.
2. Carefully open the tube and add 100ul of sterile water to dissolve the DNA.
3. Close the tube and incubate for 10 minutes at room temperature.
4. Briefly vortex the tube and then do a quick spin (less than 5000xg) to concentrate the liquid at the bottom.
5. Store the suspended plasmid at -20°C. The DNA is stable for at least one year from date of shipping when stored at -20°C.

RefSeq: [NM_145062.3](#)

RefSeq Size: 2226 bp

RefSeq ORF: 1737 bp

Locus ID: 221302

UniProt ID: [Q96AP4](#)

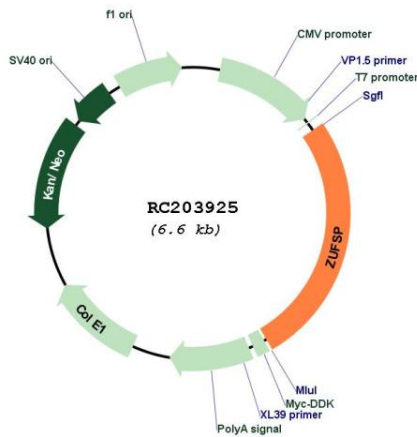
Cytogenetics: 6q22.1

Domains: zf-C2H2

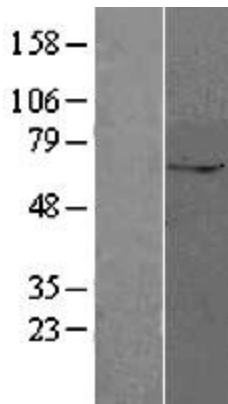
MW: 66 kDa

Gene Summary: This gene encodes a protein containing zinc finger motifs and a cysteine peptidase domain. The encoded protein functions as a K63-specific de-ubiquitinating enzyme that specifically cleaves long K63-linked polyubiquitin chains in the middle of a chain (i.e. "endo cleavage") rather than by removing the terminal ubiquitin from a chain. This enzyme is thought to be involved in the regulation of DNA repair by cleaving K63-linked ubiquitin chains at repair foci. This protein is related to proteases for the ubiquitin-like modifiers Ufm1 (ubiquitin fold modifier 1) and Atg8/Gabarapl2, but does not have any activity on these modifiers. [provided by RefSeq, Mar 2018]

Product images:



Circular map for RC203925



Western blot validation of overexpression lysate (Cat# [LY403421]) using anti-DDK antibody (Cat# [TA50011-100]). Left: Cell lysates from untransfected HEK293T cells; Right: Cell lysates from HEK293T cells transfected with RC203925 using transfection reagent MegaTran 2.0 (Cat# [TT210002]).