

Product datasheet for RC203907

Adiponectin Receptor 1 (ADIPOR1) (NM_015999) Human Tagged ORF Clone

Product data:

Product Type:	Expression Plasmids
Product Name:	Adiponectin Receptor 1 (ADIPOR1) (NM_015999) Human Tagged ORF Clone
Tag:	Myc-DDK
Symbol:	Adiponectin Receptor 1
Synonyms:	ACDCR1; CGI-45; CGI45; PAQR1; TESBP1A
Mammalian Cell Selection:	Neomycin
Vector:	pCMV6-Entry (PS100001)
E. coli Selection:	Kanamycin (25 ug/mL)
ORF Nucleotide Sequence:	>RC203907 ORF sequence Red=Cloning site Blue=ORF Green=Tags(s)

TTTTGTAATACGACTCACTATAGGGCGGCCGGAATTCGTCGACTGGATCCGGTACCGAGGAGATCTGCC
GCC**CGATCGCC**

ATGTCTTCCCACAAGGATCTGTGGTGGCACAGGGGAATGGGGCTCCTGCCAGTAACAGGGAAGCTGACA
CGGTGGAAGTGGCTGAACTGGGACCCCTGCTAGAAGAGAAGGGCAAAACGGGTAATCGCCAACCCACCCAA
AGCTGAAGAAGAGCAAACATGCCAGTGGCCAGGAAGAAGAGGAGGAGGTGCGGGTACTGACACTTCCC
CTGCAAGCCACCACGCCATGGAGAAGATGGAAGATTTGTGTACAAGGTCTGGGAGGGACGTTGGAGGG
TCATCCCATATGATGTGCTCCCTGACTGGCTAAAGGACAACGACTATCTGCTACATGGTCATAGACCTCC
CATGCCCTCCTTTCGGGCTTGTCTCAAGAGCATCTCCGATTACATACAGAACTGGCAACATCTGGACC
CATCTGCTTGGTTTCGTGCTGTTTCTCTTTTTGGGAATCTTGACCATGCTCAGACCAAATATGTAATTCA
TGGCCCTCTACAGGAGAAGGTGGTTTTTGGGATGTTCTTTTTGGGTGCAGTGTCTGCCTCAGCTTCTC
CTGGCTCTTTCACACCGTCTATTGTCAATCAGAGAAAGTCTCTCGGACTTTTTCCAACTGGACTATTCA
GGGATTGCTCTTCTAATTATGGGAGCTTTGTCCCCTGGCTCTATTATTCCTTCTACTGCTCCACACGC
CACGGCTCATCTACCTCTCCATCGTCTGTGTCTGGGCATTTCTGCCATCATTGTGGCGCAGTGGGACCG
GTTTGGCACTCCTAAGCACCGGCAGACAAGAGCAGGCGTGTCTGGGACTTGGCTTGTAGTGGCGTCTGT
CCCACCATGCACCTTACTATCGCTGAGGGCTTTGTCAAGGCCACCACAGTGGGCAGATGGGCTGGTTCT
TCCTCATGGCTGTGATGTACATCACTGGAGCTGGCCTTTATGCTGCTCGAATTCCTGAGCGCTTCTTTCC
TGGAAAATTTGACATATGGTTCCAGTCTCATCAGATTTTCCATGCTCCTGGTGGTGGCAGCAGCCTTTGTC
CACTTCTATGGAGTCTCCAACCTTCAGGAATTCGGTTACGGCCTAGAAGGCGGCTGTACTGATGACACCC
TTCTC

ACGCGTACGCGGCCGCTCGAGCAGAACTCATCTCAGAAGAGGATCTGGCAGCAAATGATATCCTGGATT
ACAAGGATGACGACGATAAGGTTTAA



[View online »](#)

Protein Sequence: >RC203907 protein sequence
Red=Cloning site Green=Tags(s)

MSSHKGSVVAQNGAPASNREADTVELAELGPLLEEKGRVIANPPKAEETCPVPQEEEEVRLTLP
 LQAHAMEKMEEFVYKVEGRWRVIPYDVLDPWLKNDYLLHHRPPMPSFRACFKSIFRIHTETGNIWT
 HLLGFVLFLLGILTMLRPNMYFMAPLQEKVVFVGMFFLGAVLCLFSWLFHTVYCHSEKVSRTFSKLDYS
 GIALLIMGSFVPLYYSFYCSQPRLIYLSIVCVLGISAIIVAQWDRFATPKHRQTRAGVFLGLGLSGVV
 PTMHFTIAEGFVKATTVGQMGWFFLMVMYITGAGLYAARIPERFFPGKFDIWFQSHQIFHVLVAAAFV
 HFYGVSNLQEFRYGLEGGCTDDTLL

TRTRPLEQKLISEEDLAANDILDYKDDDDKV

Chromatograms: https://cdn.origene.com/chromatograms/mk6147_h08.zip

Restriction Sites: SgfI-MluI

Cloning Scheme:



* The last codon before the Stop codon of the ORF

ACCN: NM_015999

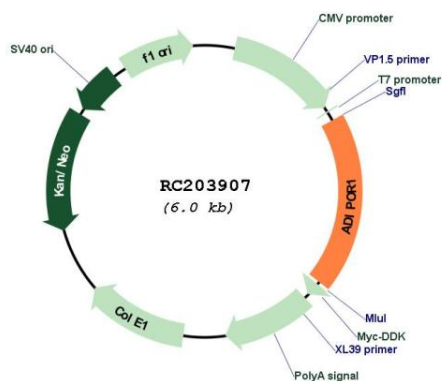
ORF Size: 1125 bp

OTI Disclaimer: Due to the inherent nature of this plasmid, standard methods to replicate additional amounts of DNA in E. coli are highly likely to result in mutations and/or rearrangements. Therefore, OriGene does not guarantee the capability to replicate this plasmid DNA. Additional amounts of DNA can be purchased from OriGene with batch-specific, full-sequence verification at a reduced cost. Please contact our customer care team at custsupport@origene.com or by calling 301.340.3188 option 3 for pricing and delivery.

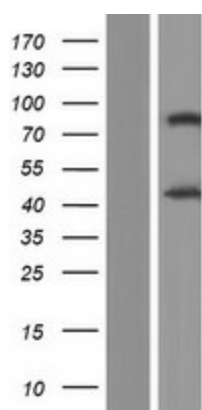
The molecular sequence of this clone aligns with the gene accession number as a point of reference only. However, individual transcript sequences of the same gene can differ through naturally occurring variations (e.g. polymorphisms), each with its own valid existence. This clone is substantially in agreement with the reference, but a complete review of all prevailing variants is recommended prior to use. [More info](#)

OTI Annotation:	This clone was engineered to express the complete ORF with an expression tag. Expression varies depending on the nature of the gene.
Components:	The ORF clone is ion-exchange column purified and shipped in a 2D barcoded Matrix tube containing 10ug of transfection-ready, dried plasmid DNA (reconstitute with 100 ul of water).
Reconstitution Method:	<ol style="list-style-type: none">1. Centrifuge at 5,000xg for 5min.2. Carefully open the tube and add 100ul of sterile water to dissolve the DNA.3. Close the tube and incubate for 10 minutes at room temperature.4. Briefly vortex the tube and then do a quick spin (less than 5000xg) to concentrate the liquid at the bottom.5. Store the suspended plasmid at -20°C. The DNA is stable for at least one year from date of shipping when stored at -20°C.
Note:	Plasmids are not sterile. For experiments where strict sterility is required, filtration with 0.22um filter is required.
RefSeq:	NM_015999.6
RefSeq Size:	2184 bp
RefSeq ORF:	1128 bp
Locus ID:	51094
UniProt ID:	Q96A54
Cytogenetics:	1q32.1
Domains:	UPF0073
Protein Families:	Druggable Genome, Transmembrane
Protein Pathways:	Adipocytokine signaling pathway
MW:	42.6 kDa
Gene Summary:	This gene encodes a protein which acts as a receptor for adiponectin, a hormone secreted by adipocytes which regulates fatty acid catabolism and glucose levels. Binding of adiponectin to the encoded protein results in activation of an AMP-activated kinase signaling pathway which affects levels of fatty acid oxidation and insulin sensitivity. A pseudogene of this gene is located on chromosome 14. Multiple alternatively spliced transcript variants have been found for this gene. [provided by RefSeq, Mar 2014]

Product images:



Circular map for RC203907



Western blot validation of overexpression lysate (Cat# [LY426849]) using anti-DDK antibody (Cat# [TA50011-100]). Left: Cell lysates from untransfected HEK293T cells; Right: Cell lysates from HEK293T cells transfected with [RC225575] using transfection reagent MegaTran 2.0 (Cat# [TT210002]).



Coomassie blue staining of purified ADIPOR1 protein (Cat# [TP303907]). The protein was produced from HEK293T cells transfected with ADIPOR1 cDNA clone (Cat# RC203907) using MegaTran 2.0 (Cat# [TT210002]).