

Product datasheet for **RC203905**

RNF10 (NM_014868) Human Tagged ORF Clone

Product data:

Product Type:	Expression Plasmids
Product Name:	RNF10 (NM_014868) Human Tagged ORF Clone
Tag:	Myc-DDK
Symbol:	RNF10
Synonyms:	RIE2
Mammalian Cell Selection:	Neomycin
Vector:	pCMV6-Entry (PS100001)
E. coli Selection:	Kanamycin (25 ug/mL)



[View online »](#)

ORF Nucleotide Sequence:

>RC203905 ORF sequence
 Red=Cloning site Blue=ORF Green=Tags(s)

TTTTGTAATACGACTCACTATAGGGCGGCCGGGAATTCGTCGACTGGATCCGGTACCGAGGAGATCTGCC
 GCC**CGCATCGCC**

ATGCCGCTGAGCTCCCCAACGCCGCCACCCTCCGACATGGACAAGAACAGCGGCTCCAACAGCT
 CCTCCGCTCTTCGGGCAGCAGCAAAGGGCAACAGCCGCCCGCTCCGCTCGGCCGGGGCCAGCCGGCGA
 GTCTAAACCCAAGAGCGATGAAAGAATCCAGTGGATCCAAGCGTTATAATCGCAAACGTGAACCTTCC
 TACCCCAAAAATGAAAGTTTAAACAACAGTCCCGTCGCTCCAGTTCACAGAAAAGCAAGACTTTTAAACA
 AGATGCCTCCTCAAAGGGCGCGGCAGCAGCAAACCTTTAGCTCTTCTTTAATGGTGAAGACGAGA
 TGAGGTAGCAGAGGCTCAACGGGCAGAGTTAGCCCTGCCAGTCTCTGGTCTAAGAAGATCAACCTG
 AACCACTGTGTAATTTCACTTTTGAACCCCGTGGCCAGACGGGTCACTTTGAAGGCAGTGGACATGGTA
 GCTGGGAAAGAGGAACAAGTGGGGACATAAGCCTTTTAAACAAGGAACCTTTTTACAGGCCAAGTCCCA
 ATTTGTGGTGTCTGAAGACCAAGACTACACAGCTCATTTTGTGATCCTGATACATTAGTTAACTGGGAC
 TTTGTGGAACAAGTGCATTTGTAGCCATGAAGTGCCATCTTGCCCAATATGCCTCTATCCACCTACTG
 CAGCCAAGATAACCCGTTGTGGACACATCTTCTGCTGGGCATGCATCCTGCACTATCTTTCACTGAGTGA
 GAAGACGTGGAGTAAATGTCCCATCTGTTACAGTCTGTGCATAAGAAGGATCTCAAGAGTGTGTTGCC
 ACAGAGTCACATCAGTATGTTGTTGGTATACCATACGATGCAGCTGATGAAGAGGGAGAAAGGGGTGT
 TGGTGGCTTTGCCAAATCCAAATGGATGAATGTAGACCATCCCATTCTAGGAGATGAACAGCACAG
 CCACTACTCCAAGTTGCTGCTGGCCTTAAGGAGCAGGTGCTGCACCGGGTAGTTCTGGAGGAGAAAAGTA
 GCACTAGAGCAGCAGCTGGCAGAGGAGAAGCACACTCCGAGTCTGCTTTATTGAGGCAGCTATCCAGG
 TGCTCTGGAACAACCTGGTGTGATGGCTCCCTTGGCGAAGGAGTCTGTTTTTCAACCCAGGAAGGGTGTG
 CTGGAGTATCTGTCTGCCTTCGATGAAGAAACCGGAAGTTTGTCTCTGGACACTCCTCTAGACCTC
 TTGCTCTCCCTCTGGTAGAAGAGGAGGAAGCAGTGTCTGAACCAGAGCCTGAGGGGTTGCCAGAGCCTG
 TGATGACTTGGAGTTAGCAGATGACAATCTTAAAGAGGGGACATTTGCACTGAGTCCAGCCAGCAGGAA
 CCCATCACCAGTCAGGCTTACACGCCTCAGCAGCTCTCCTTGTACTACTTTTACCAAGCGGAAGATG
 GACAGCATATGTTCTGCACCCTGTGAATGTGCGCTGCCTCGTGCAGGAGTACGGCAGCCTGGAGAGGAG
 CCCCAGAGAAGATCTCAGCAACTGTGGTGGAGATTGCTGGCTACTCCATGTCTGAGGATGTTGCACAGCT
 CACAGATATCTCTCACTTGCCTACTCCTGTGAGTTTCAAGTCTGTGAAGTGGCTTTGCAACCTCCTG
 TGGTCTTAAGGAAACCTTAGAGATGTTCTCAGATGACATTGAGAAGAGGAAACGTGAGCCGCAAAAGAA
 GGCTCGGGAGGAACGCCCGGAGAGCGCAGGATTGAGATAGAGGAGAAACAAGAAACAGGGCAAGTACCCA
 GAAGTCCACATTTCCCTCGAGAATCTACAGCAGTTTCTGCTTCAATTTATACCTGCTCCTCTGATT
 CTGCTTTGGTCCCACCAGCAGGAGGATGGGGCCCTCTCCATTTCTCCTCTCAGCAGAAGTCCAGG
 TTCCATGCAGACTTTCTGCTGACCCCTGTGCACCCACTGCCAGTCAAGGCAGTCCCTCATTCTGCGTT
 GGGAGTCTGGAAGAAGACTCTCCCTTCCCTTCTTTGCCAGATGCTGAGGGTTGGAAAAGCAAAAGCAG
 ATGTGTGGCCAAAACCTGCTCCAAGAAAGATGAGAACAGCTTAGTTCTCCTGCCCTGTGGACAGCGA
 CGGGGAGAGTGATAATTCAGACCGTGTCTGTGCCAGTTTTCAAATTCCTTCAGCCAAGCTATTGAA
 GCAGCCTTCAAGAACTGGACACACCAGCTACTTCAGATCCCCTCTGAAAGAAAAGGAGGAAAAGAAAA
 GAAAAAACAGAAAACAGAAGCTCCTGTTCAACACCTCAGTCGTCACACCAAG

ACGCGTACGCGGCCGCTCGAGCAGAACTCATCTCAGAAGAGGATCTGGCAGCAATGATATCCTGGATT
 ACAAGGATGACGACGATAAGGTTTAA

Protein Sequence:

>RC203905 protein sequence
 Red=Cloning site Green=Tags(s)

MPLSSPNAATASDMDKNSGNSSSSASSGSSKGQQPPRSASAGPAGE SKPKSDGKNSSGSKRYNRKRELS
 YPKNESFNQSRSSSQKSKTFNKMPQ RGGSSKLFSSSFNGGRRDEVAEAQRAEFSPAQFSGPKKINL
 NHLLNFTFEPGQTGHFEGSGHGSWGKRKNKGHKPFNKELFLQANCQFVVEDQDYTAHFADPDTLVNWD
 FVEQVRI CSHEVPSCPICLYPPTAAKITRCGHIFCWACILHYLSLSEKTWSKCPICYSSVHKKDLKSVVA
 TESHQYVVGDTITMQLMKREKGLVALPKSKWMNVDPHPIHLGDEQHSQYSKLLLASKEQVLHRVLEEKV
 ALEQQLAEEKHTPESCFIEAAIQELKTREEALSGLAGSRREVTGVVAALEQLVLMAPLAKESVFPKRGV
 LEYLSAFDEETTEVCSLDTPSRPLALPLVEEEEAVSEPEPEGLPEACDDLELADDNLKEGTICTESSQQE
 PITKSGFTRLSSSPCYFYQAEDGQHMF LHPVNVRLVREYGLERSPEKISATVVEIAGYSMEDVVRQR
 HRYLSHLPLTCEFSICELALQPPVVSKE TLEMFSDDIEKRKRQRQKKAREERRRERRIEIEENKKQ GKYP
 EVHIPLNLQQFPAFNSYTCSSDSALGPTSTEGHGALSI SPLSRSPGSHADFLLTPLSPTASQGSFSCV
 GSLEEDSPFPFAQMLRVGKAKADVWPKTAPKKDENSLVPPAPVDSGDSDNSDRVPVPSFQNSFSQAIE
 AAFMKLDTPATSDPLSEEKGGKKRKKQKQLLFSTSVVHTK

TRTRPLEQKLI SEEDLAANDILDYKDDDDKV

Restriction Sites:

Sgfl-MluI

Reconstitution Method:

1. Centrifuge at 5,000xg for 5min.
2. Carefully open the tube and add 100ul of sterile water to dissolve the DNA.
3. Close the tube and incubate for 10 minutes at room temperature.
4. Briefly vortex the tube and then do a quick spin (less than 5000xg) to concentrate the liquid at the bottom.
5. Store the suspended plasmid at -20°C. The DNA is stable for at least one year from date of shipping when stored at -20°C.

RefSeq: [NM_014868.5](#)

RefSeq Size: 3864 bp

RefSeq ORF: 2436 bp

Locus ID: 9921

UniProt ID: [Q8N5U6](#)

Cytogenetics: 12q24.31

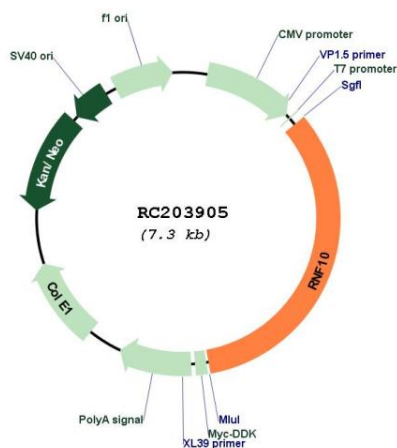
Domains: RING

Protein Families: Druggable Genome

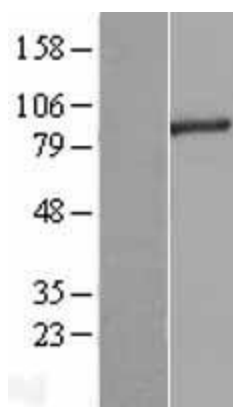
MW: 89.9 kDa

Gene Summary: The protein encoded by this gene contains a ring finger motif, which is known to be involved in protein-protein interactions. The specific function of this protein has not yet been determined. EST data suggests the existence of multiple alternatively spliced transcript variants, however, their full length nature is not known. [provided by RefSeq, Jul 2008]

Product images:



Circular map for RC203905



Western blot validation of overexpression lysate (Cat# [LY414976]) using anti-DDK antibody (Cat# [TA50011-100]). Left: Cell lysates from untransfected HEK293T cells; Right: Cell lysates from HEK293T cells transfected with RC203905 using transfection reagent MegaTran 2.0 (Cat# [TT210002]).