

Product datasheet for RC203901

CNRIP1 (NM_015463) Human Tagged ORF Clone

Product data:

Product Type:	Expression Plasmids
Product Name:	CNRIP1 (NM_015463) Human Tagged ORF Clone
Tag:	Myc-DDK
Symbol:	CNRIP1
Synonyms:	C2orf32; CRIP-1; CRIP1
Mammalian Cell Selection:	Neomycin
Vector:	pCMV6-Entry (PS100001)
E. coli Selection:	Kanamycin (25 ug/mL)
ORF Nucleotide Sequence:	>RC203901 ORF sequence Red=Cloning site Blue=ORF Green=Tags(s)

TTTTGTATACGACTCACTATAGGGCGGCCGGAATTCGTCGACTGGATCCGGTACCGAGGAGATCTGCC
 GCCCGCATCGCC

ATGGGGGACCTGCCGGGCTCGTGCCTCTCCATCGCGCTGCGCATCCAGCCTAATGACGGCCCGGTCT
 TTTACAAGGTGGACGGGAGCGCTTCGGCCAGAACCGCACCATCAAGCTGCTACCGGCTCCTCTACAA
 GGTTGAGGTGAAGATTAAACCCAGCAGCTGCAGGTCGAGAATATTTCCATTGGTGGTGTGCTTGTCCA
 CTGGAAGTGAAGTCTAAGAGCCTGATGGGACAGAGTTGTTTATACGGGTACATATGACACAGAAGGTG
 TGACCCCAACGAAGAGTGGAGAACGGCAACCCATCCAGATCACCATGCCGTTACAGACATTGGGACCTT
 CGAGACAGTGTGGCAAGTCAAGTTCTACAATTACCACAAGCGGGATCACTGCCAGTGGGGAAGCCCTTC
 TCTGTCATTGAGTATGAATGCAAGCCCAACGAGACACGAGTCTGATGTGGTGAACAAGGAGTCTTCC
 TC

ACGCGTACGCGGCCGCTCGAGCAGAACTCATCTCAGAAGAGGATCTGGCAGCAAATGATATCCTGGATT
 ACAAGGATGACGACGATAAGGTTTAA

Protein Sequence:	>RC203901 protein sequence Red=Cloning site Green=Tags(s)
-------------------	--

MGDLPGLVRLSIALRIQPNDDGPVFKVDGQRFQGNRTIKLLTGSSYKVEVKIKPSTLQVENISIGGLVP
 LELKSKEPDGDRVVTGTVDTEGVTPTKSGERQPIQITMPFTDIGTFETVWQVKFYNYHKRDHCQWGSF
 SVIEYECKPNETRSLMWVNKESFL

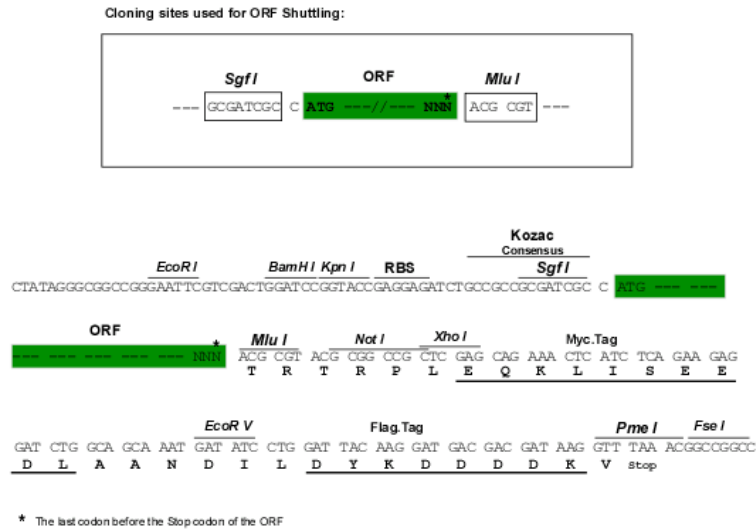
TRTRPLEQKLISEEDLAANDILDYKDDDDKV

Chromatograms:	https://cdn.origene.com/chromatograms/mk6092_b10.zip
----------------	---


[View online »](#)

Restriction Sites: SgfI-MluI

Cloning Scheme:



ACCN: NM_015463

ORF Size: 492 bp

OTI Disclaimer: The molecular sequence of this clone aligns with the gene accession number as a point of reference only. However, individual transcript sequences of the same gene can differ through naturally occurring variations (e.g. polymorphisms), each with its own valid existence. This clone is substantially in agreement with the reference, but a complete review of all prevailing variants is recommended prior to use. [More info](#)

OTI Annotation: This clone was engineered to express the complete ORF with an expression tag. Expression varies depending on the nature of the gene.

Components: The ORF clone is ion-exchange column purified and shipped in a 2D barcoded Matrix tube containing 10ug of transfection-ready, dried plasmid DNA (reconstitute with 100 ul of water).

Reconstitution Method:

1. Centrifuge at 5,000xg for 5min.
2. Carefully open the tube and add 100ul of sterile water to dissolve the DNA.
3. Close the tube and incubate for 10 minutes at room temperature.
4. Briefly vortex the tube and then do a quick spin (less than 5000xg) to concentrate the liquid at the bottom.
5. Store the suspended plasmid at -20°C. The DNA is stable for at least one year from date of shipping when stored at -20°C.

Note: Plasmids are not sterile. For experiments where strict sterility is required, filtration with 0.22um filter is required.

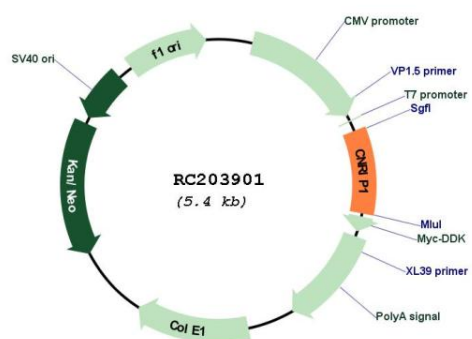
RefSeq: [NM_015463.3](#)

RefSeq Size: 2037 bp

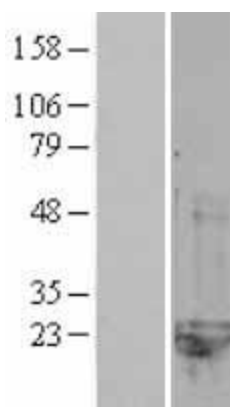
RefSeq ORF: 495 bp

Locus ID:	25927
UniProt ID:	Q96F85
Cytogenetics:	2p14
MW:	18.6 kDa
Gene Summary:	This gene encodes a protein that interacts with the C-terminal tail of cannabinoid receptor 1. Two transcript variants encoding different isoforms have been described for this gene. [provided by RefSeq, Jul 2013]

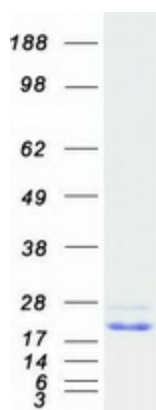
Product images:



Circular map for RC203901



Western blot validation of overexpression lysate (Cat# [LY402440]) using anti-DDK antibody (Cat# [TA50011-100]). Left: Cell lysates from untransfected HEK293T cells; Right: Cell lysates from HEK293T cells transfected with RC203901 using transfection reagent MegaTran 2.0 (Cat# [TT210002]).



Coomassie blue staining of purified CNRIP1 protein (Cat# [TP303901]). The protein was produced from HEK293T cells transfected with CNRIP1 cDNA clone (Cat# RC203901) using MegaTran 2.0 (Cat# [TT210002]).