

## Product datasheet for **RC203898**

### **TMEM187 (NM\_003492) Human Tagged ORF Clone**

#### Product data:

**Product Type:** Expression Plasmids  
**Product Name:** TMEM187 (NM\_003492) Human Tagged ORF Clone  
**Tag:** Myc-DDK  
**Symbol:** TMEM187  
**Synonyms:** CXorf12; DXS9878E; ITBA1  
**Mammalian Cell Selection:** Neomycin  
**Vector:** pCMV6-Entry (PS100001)  
**E. coli Selection:** Kanamycin (25 ug/mL)  
**ORF Nucleotide Sequence:** >RC203898 ORF sequence  
**Red=Cloning site Blue=ORF Green=Tags(s)**

TTTTGTAATACGACTCACTATAGGGCGGCCGGAATTCGTCGACTGGATCCGGTACCGAGGAGATCTGCC  
GCC**CGGATCGCC**

ATGAATCCAGAGTGGGGCAGGCCTTCGTGCACGTGGCCGTGGCCGTGGCCTCTGTGCCGTGGCTGTGT  
TCACGGGCATTTTCGACAGTGTTCCGTGCAAGTGGGCTATGAGCACTACGCCGAGGCGCCCGTGGCCGG  
CCTCCCTGCCTTCTGGCCATGCCGTTCAACTCACTCGTGAACATGGCCTACACGCTGCTGGGGCTGTCG  
TGGCTGCACAGGGCGGCGGATGGGGCTGGGTCCCCGCTACCTGAAGGACGTGTTGCGAGCCATGGCCC  
TGCTCTATGGCCCGTGCAGTGGCTGCGCCTGTGGACGCAGTGGCGCCGTGCCGGTGTGGACCAGTG  
GCTCACACTGCCCATCTTTCATGGCCCGTGGCCTGGTGCCTCTACCTAGACCGCGGCTGGCGGCCCTGG  
CTGTTCTCTCTCTTGTAGTGCCTCTCCCTGGCCAGTTATGGCCTCGCTCTGCTGCATCCCCAGGGCTTCG  
AGGTGCGCACTGGGTGCTCACGTGGTGGCCGCTGTGGGGCAGGCGCTGCGCACCCACAGGCACTATGGCAG  
CACCACCTCGGCTACCTACTTAGCTTTGGGGGTGCTCTCTTGCCTGGGCTTTGTGGTCTCAAGCTGTGT  
GACCATCAGCTCGCACGGTGGCGTCTCTCCAGTGCCTCACAGGCCACTTCTGGTCCAAGGTCTGTGACG  
TGCTCCAGTTCACCTTTGCGTTTTGTTCTGACGCATTTCAACTCACCCAAGATTCCATCCCTCTGG  
CGGAAGACGCGT

AG**CGGACCG**ACGCGTACGCGGCCGCTCGAGCAGAAACTCATCTCAGAAGAGGATCTGGCAGCAAATGATATCC  
TGGATTACAAGGATGACGACGATAAGGTTTAA



[View online »](#)

**Protein Sequence:** >RC203898 protein sequence  
 Red=Cloning site Green=Tags(s)

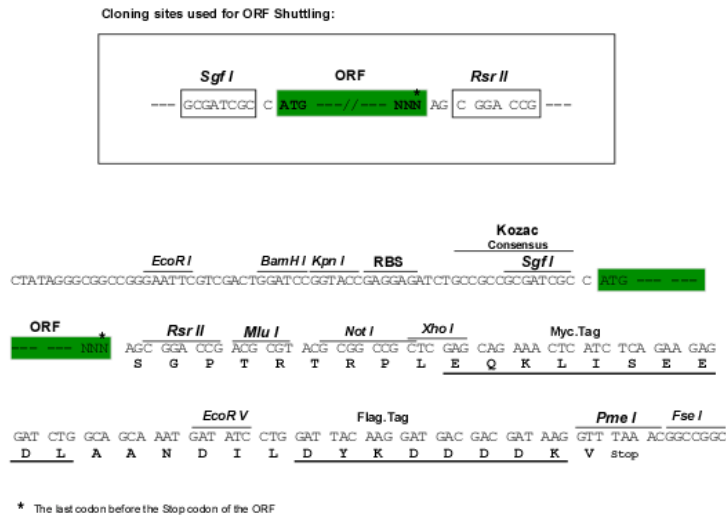
MNPEWQQAFVHVAVAGGLCAVAVFTGIFDSVSVQVGYEHYAEAPVAGLPAFLAMPFNSLVNMAAYTLLGLS  
 WLHRGGAMGLGPRYLKDVFAAMALLYGYPVQWLRRLWTQWRAAVLDQWLTLPFAWPVAVCLYLDRGWRPW  
 LFLSLECVSLASYGLALLHPQGFVALGAHVVAAVGQALRTHRHYGSTTSATYLALGVL SCLGFVVLKLC  
 DHQLARWRLFQCLTGHFWSKVCVLDLQHFHAFLLFTHFNTHPRFHPSGGKTR

SGP TRTRPLEQKLI SEEDLAANDILDYKDDDDKV

**Chromatograms:** [https://cdn.origene.com/chromatograms/mk6615\\_g09.zip](https://cdn.origene.com/chromatograms/mk6615_g09.zip)

**Restriction Sites:** SgfI-RsrII

**Cloning Scheme:**



**ACCN:** NM\_003492

**ORF Size:** 783 bp

**OTI Disclaimer:** The molecular sequence of this clone aligns with the gene accession number as a point of reference only. However, individual transcript sequences of the same gene can differ through naturally occurring variations (e.g. polymorphisms), each with its own valid existence. This clone is substantially in agreement with the reference, but a complete review of all prevailing variants is recommended prior to use. [More info](#)

**OTI Annotation:** This clone was engineered to express the complete ORF with an expression tag. Expression varies depending on the nature of the gene.

**Components:** The ORF clone is ion-exchange column purified and shipped in a 2D barcoded Matrix tube containing 10ug of transfection-ready, dried plasmid DNA (reconstitute with 100 ul of water).

**Reconstitution Method:**

1. Centrifuge at 5,000xg for 5min.
2. Carefully open the tube and add 100ul of sterile water to dissolve the DNA.
3. Close the tube and incubate for 10 minutes at room temperature.
4. Briefly vortex the tube and then do a quick spin (less than 5000xg) to concentrate the liquid at the bottom.
5. Store the suspended plasmid at -20°C. The DNA is stable for at least one year from date of shipping when stored at -20°C.

**RefSeq:** [NM\\_003492.3](#)

**RefSeq Size:** 1682 bp

**RefSeq ORF:** 786 bp

**Locus ID:** 8269

**UniProt ID:** [Q14656](#)

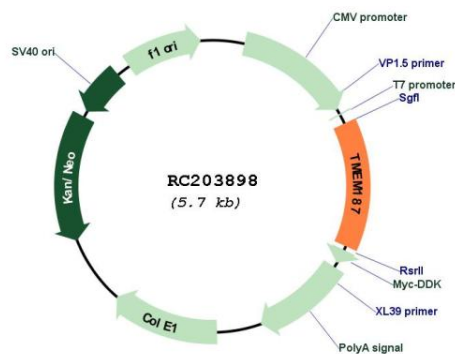
**Cytogenetics:** Xq28

**Protein Families:** Transmembrane

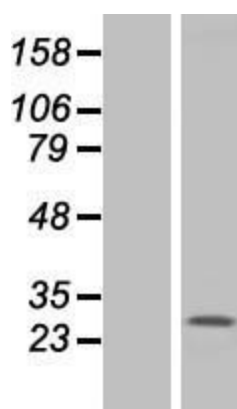
**MW:** 29.1 kDa

**Gene Summary:** This gene consists of two exons and encodes a multi-pass membrane protein. An alternatively spliced transcript variant encoding the same protein has been found, but its biological validity is not determined. [provided by RefSeq, May 2010]

### Product images:



Circular map for RC203898



Western blot validation of overexpression lysate (Cat# [LY418645]) using anti-DDK antibody (Cat# [TA50011-100]). Left: Cell lysates from untransfected HEK293T cells; Right: Cell lysates from HEK293T cells transfected with RC203898 using transfection reagent MegaTran 2.0 (Cat# [TT210002]).