

## Product datasheet for **RC203888**

### CRISPLD1 (NM\_031461) Human Tagged ORF Clone

#### Product data:

Product Type:	Expression Plasmids
Product Name:	CRISPLD1 (NM_031461) Human Tagged ORF Clone
Tag:	Myc-DDK
Symbol:	CRISPLD1
Synonyms:	CRISP-10; CRISP10; LCRISP1
Mammalian Cell Selection:	Neomycin
Vector:	pCMV6-Entry (PS100001)
E. coli Selection:	Kanamycin (25 ug/mL)



[View online »](#)

**ORF Nucleotide Sequence:**

>RC203888 ORF sequence  
 Red=Cloning site Blue=ORF Green=Tags(s)

TTTTGTAATACGACTCACTATAGGGCGGCCGGAATTCGTCGACTGGATCCGGTACCGAGGAGATCTGCC  
 GCC**CGGATCGCC**

ATGAAGTGTACCGCGGGAGTGGCTCAGAGTAACCACAGTGTCTTTCATGGCTAGAGCAATTCAGCCA  
 TGGTGGTTCCCAATGCCACTTTATTGGAGAACTTTGGAAAAATACATGGATGAGGATGGTGGTGGT  
 GATAGCCAAACAACGAGGAAAAGGCCATCACAGACAATGACATGCAGAGTATTTTGGACCTTCATAAT  
 AAATTACGAAGTCAGGTGTATCCAACAGCCTCTAATATGGAGTATATGACATGGGATGTAGAGCTGGAAA  
 GATCTGCAGAATCCTGGGCTGAAAGTTGCTTGTGGGAACATGGACCTGCAAGCTTGTCCATCAATTGG  
 ACAGAATTTGGGAGCACACTGGGAAGATATAGGCCCCCGACGTTTCATGTACAATCGTGGTATGATGAA  
 GTGAAAGACTTTAGCTACCCATATGAACATGAATGCAACCCATATTGTCCATTCAAGTGTCTGGCCCTG  
 TATGTACACATTATACACAGTCTGTGGGCAACTAGTAACAGAATCGGTTGTGCCATTAATTTGTGTCA  
 TAACATGAACATCTGGGGCAGATATGGCCAAAGCTGTCTACCTGGTGTGCAATTAATCCCAAAGGGA  
 AACTGGTGGGGCCATGCCCTTACAACATGGGCGGCCCTGTTCTGCTTGCCACCTAGTTTTGGAGGGG  
 GCTGTAGAGAAAACTGTGCTACAAAGAAGGGTCAGACAGGTATTATCCCCCTCGAGAAGAGGAAAACAAA  
 TGAAATAGAACGACAGCAGTCACAAGTCCATGACACCCATGTCCGGACAAGATCAGATGATAGTAGAGA  
 AATGAAGTCATAAGCGCACAGCAATGTCCCAATTTGTTTCTTGTGAAGTAAGATTAAGAGATCAGTGCA  
 AAGGAACAACCTGCAATAGGTACGAATGTCTGCTGGCTGTTGGATAGTAAAGCTAAAGTTATTGGCAG  
 TGTACATTATGAAATGCAATCCAGCATCTGTAGAGCTGCAATTCATTATGGTATAATAGACAATGATGGT  
 GGCTGGGTAGATCACTAGACAAGGAAGAACATTATTTTCATCAAGTCCAATAGAAATGGTATTCAAA  
 CAATTGGCAAATATCAGTCTGTAATTCCTTACAGTCTCTAAAGTAACAGTTCAGGCTGTGACTGTGA  
 AACAACTGTGGAACAGCTCTGTCCATTTACATAAGCCTGCTTACATTGCCCAAGAGTATACTGTCCCTGT  
 AACTGTATGCAAGCAAATCCACATTATGCTCGTGAATTGGAACTCGAGTTTATTCTGATCTGTCCAGTA  
 TCTGCAGAGCAGCAGTACATGCTGGAGTGGTTCGAAATCACGGTGGTTATGTTGATGTAATGCCTGTGGA  
 CAAAAGAAAGACCTACATTGCTTCTTTTCAGAATGGAATCTTCTCAGAAAGTTTACAGAATCCTCCAGGA  
 GGAAAGGCATTACAGAGTGTGGTGTGGT

**ACGCGT**ACGCGGCCGCTCGAGCAGAACTCATCTCAGAAGAGGATCTGGCAGCAAATGATATCCTGGATT  
 ACAAGGATGACGACGATAAGGTTTAA

**Protein Sequence:**

>RC203888 protein sequence  
 Red=Cloning site Green=Tags(s)

MKCTAREWLRVTTVLFMARAIPAMVVPNATLLEKLEKYMDEDEGEWIIAKQRGKRAITDNDMQSILDLHN  
 KLRSQVYPTASNMEYMTWDVELERSAESWAESCLWEHPASLLPSIGQNLGAHWGRYRPPTFHVQSWYDE  
 VKDFSYPYEHECNYPYCFRCSGPVCTHYTQVWATSNRIGCAINLCHNMNIWQIWPKAVYLVLCNYSKPG  
 NWWGHAPYKHGRPCSACPPSFGGGCRENLCKEYSDRYPPREEETNEIERQSQVVDHVRTRSDSSR  
 NEVISAQQMSQIVSCEVRLRDQCKGTTTCNRYECPAGCLDSKAKVIGSVHYEMQSSICRAAIHYGIIDNDG  
 GWVDITRQGRKHIFIKSNRNGIQTIGKYQSANSFTVSKVTVQAVTCEETVEQLCPFHKPASHCPRVYCP  
 NCMQANPHYARVIGTRVYSDLSSICRAAVHAGVVRNHGGYVDVMPVDRKRTYIASFQNGIFSESLQNP  
 GKAFRVFAVV

**TRTRPLEQKLI**SEEDLAANDILDYKDDDDKV

**Chromatograms:**

[https://cdn.origene.com/chromatograms/mk6130\\_b11.zip](https://cdn.origene.com/chromatograms/mk6130_b11.zip)

**Restriction Sites:**

Sgfl-Mlul

**Cloning Scheme:**


**ACCN:** NM\_031461

**ORF Size:** 1500 bp

**OTI Disclaimer:** Due to the inherent nature of this plasmid, standard methods to replicate additional amounts of DNA in E. coli are highly likely to result in mutations and/or rearrangements. Therefore, OriGene does not guarantee the capability to replicate this plasmid DNA. Additional amounts of DNA can be purchased from OriGene with batch-specific, full-sequence verification at a reduced cost. Please contact our customer care team at [custsupport@origene.com](mailto:custsupport@origene.com) or by calling 301.340.3188 option 3 for pricing and delivery.

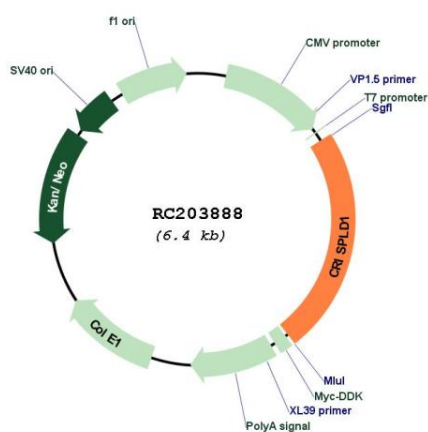
The molecular sequence of this clone aligns with the gene accession number as a point of reference only. However, individual transcript sequences of the same gene can differ through naturally occurring variations (e.g. polymorphisms), each with its own valid existence. This clone is substantially in agreement with the reference, but a complete review of all prevailing variants is recommended prior to use. [More info](#)

**OTI Annotation:** This clone was engineered to express the complete ORF with an expression tag. Expression varies depending on the nature of the gene.

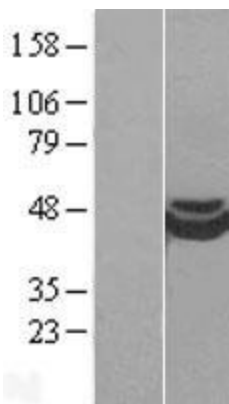
**Components:** The ORF clone is ion-exchange column purified and shipped in a 2D barcoded Matrix tube containing 10ug of transfection-ready, dried plasmid DNA (reconstitute with 100 ul of water).

- Reconstitution Method:**
1. Centrifuge at 5,000xg for 5min.
  2. Carefully open the tube and add 100ul of sterile water to dissolve the DNA.
  3. Close the tube and incubate for 10 minutes at room temperature.
  4. Briefly vortex the tube and then do a quick spin (less than 5000xg) to concentrate the liquid at the bottom.
  5. Store the suspended plasmid at -20°C. The DNA is stable for at least one year from date of shipping when stored at -20°C.

RefSeq: [NM\\_031461.6](#)  
 RefSeq Size: 4334 bp  
 RefSeq ORF: 1503 bp  
 Locus ID: 83690  
 UniProt ID: [Q9H336](#)  
 Cytogenetics: 8q21.13  
 Domains: SCP, LCCL  
 Protein Families: Secreted Protein  
 MW: 56.9 kDa

**Product images:**


Circular map for RC203888



Western blot validation of overexpression lysate (Cat# [LY403118]) using anti-DDK antibody (Cat# [TA50011-100]). Left: Cell lysates from untransfected HEK293T cells; Right: Cell lysates from HEK293T cells transfected with RC203888 using transfection reagent MegaTran 2.0 (Cat# [TT210002]).