

Product datasheet for RC203885

ESAM (NM_138961) Human Tagged ORF Clone

Product data:

Product Type:	Expression Plasmids
Product Name:	ESAM (NM_138961) Human Tagged ORF Clone
Tag:	Myc-DDK
Symbol:	ESAM
Synonyms:	W117m
Mammalian Cell Selection:	Neomycin
Vector:	pCMV6-Entry (PS100001)
E. coli Selection:	Kanamycin (25 ug/mL)
ORF Nucleotide Sequence:	>RC203885 ORF sequence Red=Cloning site Blue=ORF Green=Tags(s)

TTTTGTAATACGACTCACTATAGGGCGGCCGGAATTCGTCGACTGGATCCGGTACCGAGGAGATCTGCC
GCC**CGATCGCC**

ATGATTTCCCTCCCGGGGCCCTGGTGACCAACTGCTGCGGTTTTTGTTCCTGGGGCTGAGTGCCCTCG
CGCCCCCTCGCGGGCCAGCTGCAACTGCACTGCCCGCAACCGTTGCAGGCGGTGGAGGGAGGGGA
AGTGGTGTCTCCAGCGTGGTACACCTTGCACGGGGAGGTGTCTTCATCCCAGCCATGGGAGGTGCCCTT
GTGATGTGGTTCTTCAAACAGAAAGAAAAGGAGGATCAGGTGTTGTCTACATCAATGGGTCAACA
GCAAACCTGGAGTATCCTTGGTCTACTCCATGCCCTCCCGAACCTGTCCCTGCGGCTGGAGGGTCTCCA
GGAGAAAGACTCTGGCCCTACAGCTGCTCCGTGAATGTGCAAGACAAACAAGGCAAATCTAGGGGCCAC
AGCATCAAAACCTTAGAACTCAATGTAAGTCTCCAGCTCCTCCATCCTGCCGTCTCCAGGGTGTGC
CCCATGTGGGGGCAAACGTGACCCTGAGCTGCCAGTCTCCAAGGAGTAAGCCCGCTGTCCAATACCAAGT
GGATCGGCAGCTTCCATCCTTCCAGACTTTCTTTGACCAGCATTAGATGTATCCGTGGGTCTTTAAGC
CTCACCAACCTTTTCGTCTCCATGGCTGGAGTCTATGTCTGCAAGGCCACAATGAGGTGGGCACTGCC
AATGTAATGTGACGCTGGAAGTGAGCACAGGGCCTGGAGCTGCAGTGGTGTGGAGCTGTTGTGGGTAC
CCTGGTTGGACTGGGGTTGTGGCTGGCTGGTCTCTTGTACCACCGCCGGGGCAAGCCCTGGAGGAG
CCAGCCAAATGATCAAGGAGGATGCCATTGCTCCCGGACCCTGCCCTGGCCCAAGAGCTCAGACACAA
TCTCCAAGAATGGGACCCTTTCCTCTGTACCTCCGCACGAGCCCTCCGGCCACCCATGGCCCTCCAG
GCCTGGTGCATTGACCCACGCCCAGTCTCTCCAGCCAGGCCCTGCCCTCACCAAGACTGCCACAGACA
GATGGGGCCACCCCTCAACCAATATCCCCATCCCTGGTGGGTTTTCTTCTCTGGCTTGGCCGATGG
GTGCTGTGCCTGTGATGGTGCCTGCCAGAGTCAAGCTGGCTCTCTGGTA

ACGCGTACGCGGCCGCTCGAGCAGAAACTCATCTCAGAAGAGGATCTGGCAGCAAATGATATCCTGGATT
ACAAGGATGACGACGATAAGGTTTAA



[View online »](#)

Protein Sequence: >RC203885 protein sequence
Red=Cloning site Green=Tags(s)

MISLPGPLVTNLLRFLFLGLSALAPPSRAQLQLHLPANRLQAVEGGEVLPAWYTLHGEVSSSQPWEVPP
 VMWFFKQKEKEDQVLSYINGVTTSKPGVSLVYSMPSRNLSLRLEGLQEKDSGPYSCSVNVQDKQGKSRGH
 SIKTLELNLVPPAPPSCRLQGVPHVGANVTLSCQSPRSKPAVQYQWDRQLPSFQTFAPALDVIKGLS
 LTNLSSSMAGVYVCKAHNEVGTAQCNVTLLEVSTGPGAAVVAGAVVGTLVGLLGLAGLVLLYHRRGKALEE
 PANDIKEDAIAPRTLPPWKSSDTISKNGTSSVTSARALRPPHPPRGALTPTPSLSSQALPSPRLPTT
 DGAHPQPISPIPGVSSSSGLSRMGAVPMVPAQSQAQGLV

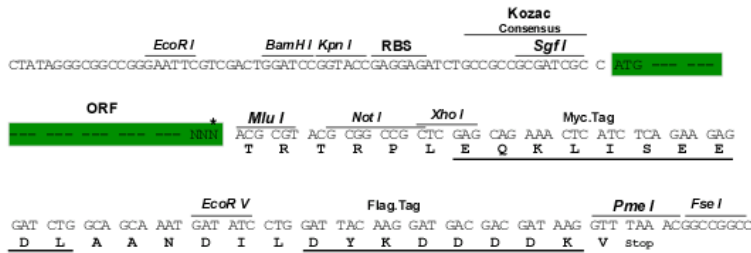
TRTRPLEQKLISEEDLAANDILDYKDDDDKV

Chromatograms: https://cdn.origene.com/chromatograms/mk6130_h10.zip

Restriction Sites: SgfI-MluI

Cloning Scheme:

Cloning sites used for ORF Shuttling:



* The last codon before the Stop codon of the ORF

ACCN: NM_138961

ORF Size: 1170 bp

OTI Disclaimer: The molecular sequence of this clone aligns with the gene accession number as a point of reference only. However, individual transcript sequences of the same gene can differ through naturally occurring variations (e.g. polymorphisms), each with its own valid existence. This clone is substantially in agreement with the reference, but a complete review of all prevailing variants is recommended prior to use. [More info](#)

OTI Annotation: This clone was engineered to express the complete ORF with an expression tag. Expression varies depending on the nature of the gene.

Components: The ORF clone is ion-exchange column purified and shipped in a 2D barcoded Matrix tube containing 10ug of transfection-ready, dried plasmid DNA (reconstitute with 100 ul of water).

Reconstitution Method:

1. Centrifuge at 5,000xg for 5min.
2. Carefully open the tube and add 100ul of sterile water to dissolve the DNA.
3. Close the tube and incubate for 10 minutes at room temperature.
4. Briefly vortex the tube and then do a quick spin (less than 5000xg) to concentrate the liquid at the bottom.
5. Store the suspended plasmid at -20°C. The DNA is stable for at least one year from date of shipping when stored at -20°C.

Note: Plasmids are not sterile. For experiments where strict sterility is required, filtration with 0.22um filter is required.

RefSeq: [NM_138961.3](#)

RefSeq Size: 1869 bp

RefSeq ORF: 1173 bp

Locus ID: 90952

UniProt ID: [Q96AP7](#)

Cytogenetics: 11q24.2

Domains: ig, IGc2, IG

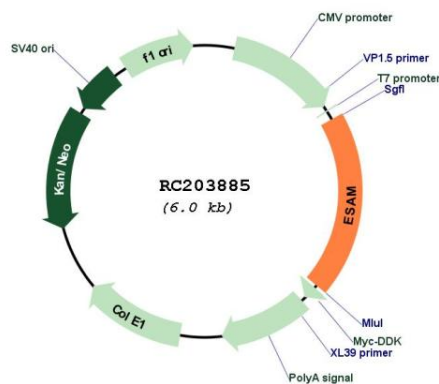
Protein Families: Druggable Genome, Transmembrane

Protein Pathways: Cell adhesion molecules (CAMs), Leukocyte transendothelial migration

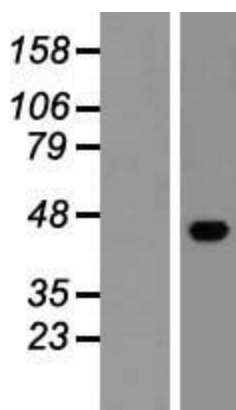
MW: 41.2 kDa

Gene Summary: Can mediate aggregation most likely through a homophilic molecular interaction. [UniProtKB/Swiss-Prot Function]

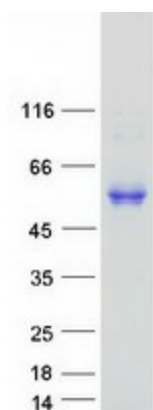
Product images:



Circular map for RC203885



Western blot validation of overexpression lysate (Cat# [LY408393]) using anti-DDK antibody (Cat# [TA50011-100]). Left: Cell lysates from untransfected HEK293T cells; Right: Cell lysates from HEK293T cells transfected with RC203885 using transfection reagent MegaTran 2.0 (Cat# [TT210002]).



Coomassie blue staining of purified ESAM protein (Cat# [TP303885]). The protein was produced from HEK293T cells transfected with ESAM cDNA clone (Cat# RC203885) using MegaTran 2.0 (Cat# [TT210002]).