

Product datasheet for **RC203882**

PCGF6 (NM_001011663) Human Tagged ORF Clone

Product data:

Product Type: Expression Plasmids
Product Name: PCGF6 (NM_001011663) Human Tagged ORF Clone
Tag: Myc-DDK
Symbol: PCGF6
Synonyms: MBLR; RNF134
Mammalian Cell Selection: Neomycin
Vector: pCMV6-Entry (PS100001)
E. coli Selection: Kanamycin (25 ug/mL)
ORF Nucleotide Sequence: >RC203882 ORF sequence
 Red=Cloning site Blue=ORF Green=Tags(s)

TTTTGTAATACGACTCACTATAGGGCGGCCGGAATTCGTCGACTGGATCCGGTACCGAGGAGATCTGCC
 GCC**CGCATCGCC**

ATGGAGGGGGTTCGCGGTGGTGACGGCGGGCAGCGTAGGCGCTGCCAAAACCGAGGGAGCTGCAGCCTTGC
 CGCCTCCGCTCCGCTCCTGTCTCCCCGCCGCCCTCACCCCTGCACCCGCAGCGGGTGGAGGGGACC
 GCGCCTCTGTCTGAGACGGGGCTCCCGCTGCTCCGGCTCCCGCCCCCTGAGCTGGAGCCGGAGCGC
 AGCCTGGCCGCTTCAGAGGCCGCTTCGAGGACGAGGACGAGGAGTTGGAAGAAGAAGAGGAGCTGGAGG
 AGGAAGAAGAGGAGGAGGAGGAGGACATGAGTCACTTCTCGTTGAGGCTGGAGGGAGGCCGCGAGGACTC
 GGAGGACGAGGAGGAGCGCCTGATTAATCTCTCTGAGCTGACCCATACATCTTGTGTTCCATTTGCAAA
 GGTTACTTAATAGATGCAACTACCATCACAGAATGTCTTCATACCTTTTGTAAAAGCTGCATCGTAAGAC
 ATTTTTACTACAGCAACAGATGTCCAAAATGCAATATAGTAGTACATCAGACACAACCTCTTTATAACAT
 AAGGTTGGACCGACAGTTACAAGACATAGTGTACAAATTAGTGATCAATCTAGAGGAAAGAGAAAAAAG
 CAAATGCATGATTTCTATAAAGAAAGAGGTCTAGAAGTACCTAAACCTGCTGTTCCACAGCCAGTCCCTT
 CAAGCAAAGGAAGATCTAAAAAGTCCTAGAATCAGTGTTCGTATTCCACCTGAACTTGATATGTCTTT
 ATTACTGGAGTTCATTGGTGCTAATGAAGGCACGGGACATTTAAAGCCATTGGAAAAGAAGTTTGTTCGA
 GTTTCAGGAGAAGCAACTATTGGACATGTAGAAAAATTCCTCAGAAGAAAAATGGGTCTTGATCCAGCTT
 GTCAGGTAGATATAATCTGTGGTATCACCTGTTGGAGCAGTATCAAACCTCTAAGGGAAATCCGACGTGC
 AATAGGTGATGCAGCAATGCAGGATGGTCTGCTTGTCCCTCATTATGGTCTTGTGGTTTCTCCTCTGAAG
 ATAACT

ACGCGTACGCGGCCGCTCGAGCAGAACTCATCTCAGAAGAGGATCTGGCAGCAATGATATCCTGGATT
 ACAAGGATGACGACGATAAGGTTAA



[View online »](#)

Protein Sequence: >RC203882 protein sequence
 Red=Cloning site Green=Tags(s)

MEGVAVVTAGSVGAAKTEGAAALPPPPPPVSPALTPAPAAGEEGPAPLSETGAPGCSGSRPPELEPER
 SLGRFRGRFEDEDELEEEEELEEEEEEDMSHFSLRLEGGRQDSEDEERLINLSELTPYILCSICK
 GYLIDATTITECLHTFCKSCIVRHFYYSNRCPKCNIVVHQTPQLYNIRLDRQLQDIVYKLVINLEEREKK
 QMHDFYKERGLEVPKPAVPQVPVSSKGRSKVLESVFRIPPELMSLLLEFIGANEGTGHFKPLEKKFVR
 VSGEATIGHVEKFLRRKMGLDPACQVDIICGDHLLLEQYQTLREIRRAIGDAAMQDGLLVLHYGLVVSPLK
 IT

TRTRPLEQKLISEEDLAANDILDYKDDDDKV

Chromatograms: https://cdn.origene.com/chromatograms/mk6306_d11.zip

Restriction Sites: SgfI-MluI

Cloning Scheme:



ACCN: NM_001011663

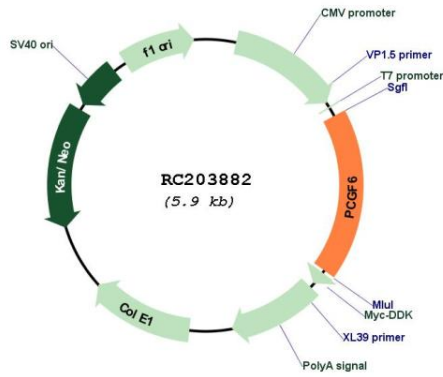
ORF Size: 1056 bp

OTI Disclaimer: Due to the inherent nature of this plasmid, standard methods to replicate additional amounts of DNA in E. coli are highly likely to result in mutations and/or rearrangements. Therefore, OriGene does not guarantee the capability to replicate this plasmid DNA. Additional amounts of DNA can be purchased from OriGene with batch-specific, full-sequence verification at a reduced cost. Please contact our customer care team at custsupport@origene.com or by calling 301.340.3188 option 3 for pricing and delivery.

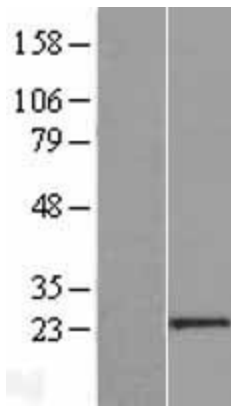
The molecular sequence of this clone aligns with the gene accession number as a point of reference only. However, individual transcript sequences of the same gene can differ through naturally occurring variations (e.g. polymorphisms), each with its own valid existence. This clone is substantially in agreement with the reference, but a complete review of all prevailing variants is recommended prior to use. [More info](#)

OTI Annotation:	This clone was engineered to express the complete ORF with an expression tag. Expression varies depending on the nature of the gene.
Components:	The ORF clone is ion-exchange column purified and shipped in a 2D barcoded Matrix tube containing 10ug of transfection-ready, dried plasmid DNA (reconstitute with 100 ul of water).
Reconstitution Method:	<ol style="list-style-type: none">1. Centrifuge at 5,000xg for 5min.2. Carefully open the tube and add 100ul of sterile water to dissolve the DNA.3. Close the tube and incubate for 10 minutes at room temperature.4. Briefly vortex the tube and then do a quick spin (less than 5000xg) to concentrate the liquid at the bottom.5. Store the suspended plasmid at -20°C. The DNA is stable for at least one year from date of shipping when stored at -20°C.
RefSeq:	<u>NM_001011663.1</u> , <u>NP_001011663.1</u>
RefSeq Size:	2248 bp
RefSeq ORF:	1053 bp
Locus ID:	84108
UniProt ID:	<u>Q9BYE7</u>
Cytogenetics:	10q24.33
Protein Families:	Transcription Factors
MW:	39.2 kDa
Gene Summary:	The protein encoded by this gene contains a RING finger motif, which is most closely related to those of polycomb group (PcG) proteins RNF110/MEL-18 and BMI1. PcG proteins are known to form protein complexes and function as transcription repressors. This protein has been shown to interact with some PcG proteins and act as a transcription repressor. The activity of this protein is found to be regulated by cell cycle dependent phosphorylation. Alternatively spliced transcript variants encoding different isoforms have been identified. [provided by RefSeq, Jul 2008]

Product images:



Circular map for RC203882



Western blot validation of overexpression lysate (Cat# [LY423286]) using anti-DDK antibody (Cat# [TA50011-100]). Left: Cell lysates from untransfected HEK293T cells; Right: Cell lysates from HEK293T cells transfected with RC203882 using transfection reagent MegaTran 2.0 (Cat# [TT210002]).