

Product datasheet for RC203879

S100A16 (NM_080388) Human Tagged ORF Clone

Product data:

Product Type: Expression Plasmids
Product Name: S100A16 (NM_080388) Human Tagged ORF Clone
Tag: Myc-DDK
Symbol: S100A16
Synonyms: AAG13; DT1P1A7; S100F
Mammalian Cell Selection: Neomycin
Vector: pCMV6-Entry (PS100001)
E. coli Selection: Kanamycin (25 ug/mL)
ORF Nucleotide Sequence: >RC203879 representing NM_080388
Red=Cloning site Blue=ORF Green=Tags(s)

TTTTGTAATACGACTCACTATAGGGCGCCGGGAATTCGTCGACTGGATCCGGTACCGAGGAGATCTGCC
GCC**CGATCGCC**

ATGTCAGACTGCTACACGGAGCTGGAGAAGGCAGTCATTGTCCTGGTGGAAAACCTCTACAAATATGTGT
CTAAGTACAGCCTGGTCAAGAACAAGATCAGCAAGAGCAGCTCCCGGAGATGCTCCAGAAAGAGCTGAA
CCACATGCTGTCGGACACAGGGAACCGGAAGGCTGCGGATAAGCTCATCCAGAACCTGGATGCCAATCAT
GATGGCGCATCAGCTTCGATGAGTACTGGACCTTGATAGCGGCATCACCGCCCCATCGCCAACTCA
TCCATGAGCAGGAGCAGCAGAGCAGCAGC

ACGCGTACGCGGCCGCTCGAGCAGAACTCATCTCAGAAGAGGATCTGGCAGCAAATGATATCCTGGATT
ACAAGGATGACGACGATAAGGTTTAA

Protein Sequence: >RC203879 representing NM_080388
Red=Cloning site Green=Tags(s)
MSDCYTELEKAVIVLVENFYKYVSKYSLVKNKISKSSFREMLQKELNHMLSDTGNRKAADKLIQNLDANH
DGRISFDEYWTLIGGITGPIAKLIHEQEQQSSS

TRTRPLEQKLISEEDLAANDILDYKDDDDKV

Chromatograms: https://cdn.origene.com/chromatograms/mk8112_g04.zip

Restriction Sites: SgfI-MluI



[View online »](#)

Cloning Scheme:


ACCN: NM_080388

ORF Size: 309 bp

OTI Disclaimer: Due to the inherent nature of this plasmid, standard methods to replicate additional amounts of DNA in E. coli are highly likely to result in mutations and/or rearrangements. Therefore, OriGene does not guarantee the capability to replicate this plasmid DNA. Additional amounts of DNA can be purchased from OriGene with batch-specific, full-sequence verification at a reduced cost. Please contact our customer care team at custsupport@origene.com or by calling 301.340.3188 option 3 for pricing and delivery.

The molecular sequence of this clone aligns with the gene accession number as a point of reference only. However, individual transcript sequences of the same gene can differ through naturally occurring variations (e.g. polymorphisms), each with its own valid existence. This clone is substantially in agreement with the reference, but a complete review of all prevailing variants is recommended prior to use. [More info](#)

OTI Annotation: This clone was engineered to express the complete ORF with an expression tag. Expression varies depending on the nature of the gene.

Components: The ORF clone is ion-exchange column purified and shipped in a 2D barcoded Matrix tube containing 10ug of transfection-ready, dried plasmid DNA (reconstitute with 100 ul of water).

Reconstitution Method:

1. Centrifuge at 5,000xg for 5min.
2. Carefully open the tube and add 100ul of sterile water to dissolve the DNA.
3. Close the tube and incubate for 10 minutes at room temperature.
4. Briefly vortex the tube and then do a quick spin (less than 5000xg) to concentrate the liquid at the bottom.
5. Store the suspended plasmid at -20°C. The DNA is stable for at least one year from date of shipping when stored at -20°C.

RefSeq: [NM_080388.3](#)

RefSeq Size: 1085 bp

RefSeq ORF: 312 bp

Locus ID: 140576

UniProt ID: [Q96FQ6](#)

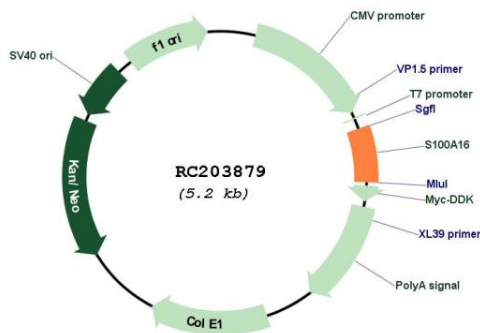
Cytogenetics: 1q21.3

Domains: EFh

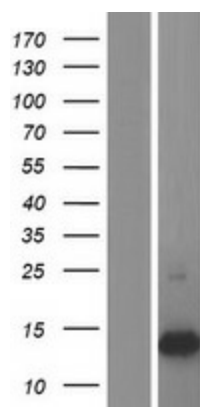
MW: 11.6 kDa

Gene Summary: Calcium-binding protein. Binds one calcium ion per monomer (PubMed:17030513). Can promote differentiation of adipocytes (in vitro) (By similarity). Overexpression in preadipocytes increases their proliferation, enhances adipogenesis and reduces insulin-stimulated glucose uptake (By similarity).[UniProtKB/Swiss-Prot Function]

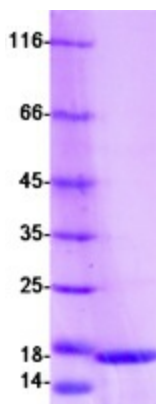
Product images:



Circular map for RC203879



Western blot validation of overexpression lysate (Cat# [LY409181]) using anti-DDK antibody (Cat# [TA50011-100]). Left: Cell lysates from untransfected HEK293T cells; Right: Cell lysates from HEK293T cells transfected with RC203879 using transfection reagent MegaTran 2.0 (Cat# [TT210002]).



Coomassie blue staining of purified S100A16 protein (Cat# [TP303879]). The protein was produced from HEK293T cells transfected with S100A16 cDNA clone (Cat# RC203879) using MegaTran 2.0 (Cat# [TT210002]).