

Product datasheet for RC203878

SLC25A6 (NM_001636) Human Tagged ORF Clone

Product data:

Product Type: Expression Plasmids
Product Name: SLC25A6 (NM_001636) Human Tagged ORF Clone
Tag: Myc-DDK
Symbol: SLC25A6
Synonyms: AAC3; ANT; ANT 2; ANT 3; ANT3; ANT3Y
Mammalian Cell Selection: Neomycin
Vector: pCMV6-Entry (PS100001)
E. coli Selection: Kanamycin (25 ug/mL)
ORF Nucleotide Sequence: >RC203878 ORF sequence
 Red=Cloning site Blue=ORF Green=Tags(s)

TTTTGTAATACGACTCACTATAGGGCGGCCGGAATTCGTCGACTGGATCCGGTACCGAGGAGATCTGCC
 GCC**CGGATCGCC**

ATGACGGAAACAGGCCATCTCCTTCGCCAAAGACTTCTTGCCGGAGGCATCGCCGCCCATCTCCAAGA
 CGGCCGTGGCTCCGATCGAGCGGGTCAAGCTGCTGCTGCAGGTCCAGCACGCCAGCAAGCAGATCGCCG
 CGACAAGCAGTACAAGGGCATCGTGGACTGCATTGTCCGCATCCCAAGGAGCAGGGCGTGTCTCTTC
 TGGAGGGGCAACCTTGCCAACGTCATTGCTACTTCCCCACTCAAGCCCTCAACTTCGCCTCAAGGATA
 AGTACAAGCAGATCTTCTGGGGGGCGTGGACAAGCACACGCAGTCTGGAGGTACTTTGCGGGCAACCT
 GGCTCCGGCGGTGCGGCCGGCGGACCTCCCTCTGCTTCTGTTACCCGCTGGATTTGCCAGAACCCGC
 CTGGCAGCGGACGTGGGAAAGTCAGGCACAGAGCGGAGTTCGAGGCCTGGGAGACTGCCTGGTGAAGA
 TCACCAAGTCCGACGGCATCCGGGGCTGTACCAGGGCTTCAGTGTCTCCGTGCAGGGCATCATCATCTA
 CCGGGCGGCTACTTCGGCGTGTACGATACGGCCAAGGGCATGCTCCCGACCCCAAGAACGCACATC
 GTGGTGAAGTGGATGATCGCGCAGACCGTGACGGCCGTGGCCGGCGTGGTGTCTACCCCTTCGACACGG
 TGCGGGCGGCATGATGATGCAGTTCGGGCGCAAAGGAGCTGACATCATGTACACGGGCACCGTCGACTG
 TTGGAGGAAGATCTTCAGAGATGAGGGGGCAAGGCCTTCTTCAAGGGTGCCTGGTCCAACGTCCTGCGG
 GGATGGGGGGCGCTTCGTGCTGGTCTGTACGACGAGCTCAAGAAGGTGATC

ACGCGTACGCGGGCGCTCGAGCAGAAACTCATCTCAGAAGAGGATCTGGCAGCAAATGATATCTGGATT
 ACAAGGATGACGACGATAAGGTTTAA



[View online »](#)

Protein Sequence: >RC203878 protein sequence
Red=Cloning site Green=Tags(s)

MTEQAISFAKDFLAGGIAAAISKTAVAPIERVKLLLQVQHASKQIAADKQYKGVDCIVRIPKEQGVLSF
 WRGNLANVIRYFPTQALNFAFKDKYKQIFLGGVDKHTQFWRYFAGNLASGGAAGATSLCFVYPLDFARTR
 LAADVKGSGTEREFRGLGDCLVKITKSDGIRGLYQGF SVSVQGI I IYRAAYFGVYDTAKGMLPDPKNTHI
 VVSWMIAQTVTAVAGVVSYPFDTVRRRMMMQFGRKGADIMYTGTVDCWRKIFRDEGGKAFKGAWSNVLR
 GMGGAFVLVLYDELKKVI

TRTRPLEQKLISEEDLAANDILDYKDDDDKV

Chromatograms: https://cdn.origene.com/chromatograms/mk6305_a11.zip

Restriction Sites: SgfI-MluI

Cloning Scheme:



ACCN: NM_001636

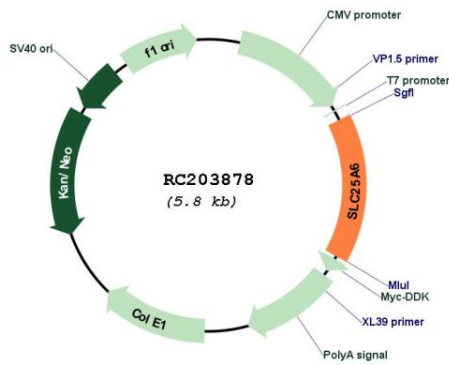
ORF Size: 894 bp

OTI Disclaimer: Due to the inherent nature of this plasmid, standard methods to replicate additional amounts of DNA in E. coli are highly likely to result in mutations and/or rearrangements. Therefore, OriGene does not guarantee the capability to replicate this plasmid DNA. Additional amounts of DNA can be purchased from OriGene with batch-specific, full-sequence verification at a reduced cost. Please contact our customer care team at custsupport@origene.com or by calling 301.340.3188 option 3 for pricing and delivery.

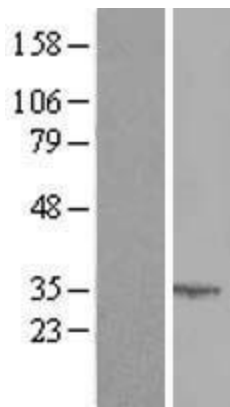
The molecular sequence of this clone aligns with the gene accession number as a point of reference only. However, individual transcript sequences of the same gene can differ through naturally occurring variations (e.g. polymorphisms), each with its own valid existence. This clone is substantially in agreement with the reference, but a complete review of all prevailing variants is recommended prior to use. [More info](#)

OTI Annotation:	This clone was engineered to express the complete ORF with an expression tag. Expression varies depending on the nature of the gene.
Components:	The ORF clone is ion-exchange column purified and shipped in a 2D barcoded Matrix tube containing 10ug of transfection-ready, dried plasmid DNA (reconstitute with 100 ul of water).
Reconstitution Method:	<ol style="list-style-type: none">1. Centrifuge at 5,000xg for 5min.2. Carefully open the tube and add 100ul of sterile water to dissolve the DNA.3. Close the tube and incubate for 10 minutes at room temperature.4. Briefly vortex the tube and then do a quick spin (less than 5000xg) to concentrate the liquid at the bottom.5. Store the suspended plasmid at -20°C. The DNA is stable for at least one year from date of shipping when stored at -20°C.
Note:	Plasmids are not sterile. For experiments where strict sterility is required, filtration with 0.22um filter is required.
RefSeq:	NM_001636.1 , NP_001627.1
RefSeq Size:	1502 bp
RefSeq ORF:	897 bp
Locus ID:	293
UniProt ID:	P12236
Cytogenetics:	X;Y
Protein Families:	Druggable Genome, Transmembrane
Protein Pathways:	Calcium signaling pathway, Huntington's disease, Parkinson's disease
MW:	32.9 kDa
Gene Summary:	This gene is a member of the mitochondrial carrier subfamily of solute carrier protein genes. The product of this gene functions as a gated pore that translocates ADP from the cytoplasm into the mitochondrial matrix and ATP from the mitochondrial matrix into the cytoplasm. The protein is implicated in the function of the permeability transition pore complex (PTPC), which regulates the release of mitochondrial products that induce apoptosis. The human genome contains several non-transcribed pseudogenes of this gene. [provided by RefSeq, Jun 2013]

Product images:



Circular map for RC203878



Western blot validation of overexpression lysate (Cat# [LY419829]) using anti-DDK antibody (Cat# [TA50011-100]). Left: Cell lysates from untransfected HEK293T cells; Right: Cell lysates from HEK293T cells transfected with RC203878 using transfection reagent MegaTran 2.0 (Cat# [TT210002]).