

## Product datasheet for **RC203868**

### ARL11 (NM\_138450) Human Tagged ORF Clone

#### Product data:

**Product Type:** Expression Plasmids  
**Product Name:** ARL11 (NM\_138450) Human Tagged ORF Clone  
**Tag:** Myc-DDK  
**Symbol:** ARL11  
**Synonyms:** ARLTS1  
**Mammalian Cell Selection:** Neomycin  
**Vector:** pCMV6-Entry (PS100001)  
**E. coli Selection:** Kanamycin (25 ug/mL)  
**ORF Nucleotide Sequence:** >RC203868 ORF sequence  
 Red=Cloning site Blue=ORF Green=Tags(s)

TTTTGTAATACGACTCACTATAGGGCGCCGGGAATTCGTCGACTGGATCCGGTACCGAGGAGATCTGCC  
 GCC**CGATCGCC**

ATGGGTTCTGTGAATCCAGAGGTCACAAGGCGGAAGCCAGGTGGTGATGATGGCCTGGACTCGGCGG  
 GCAAGACCACGCTCCTTTACAAGCTGAAGGCCACCAGCTGGTGGAGACCCTGCCACTGTTGGTTTCAA  
 CGTGGAGCCTCTGAAAGCTCCTGGGCACGTGCTACTGACTCTCTGGGACGTTGGGGGCAGGCCCGCTC  
 AGAGCCAGCTGGAAGGACTATCTGGAAGGCACAGATATCCTCGTGTACGTGCTGGACAGCACAGATGAAG  
 CCCGCTTACCCGAGTCGGCGGCTGAGCTCACAGAAGTCTGAACGACCCCAACATGGCTGGCGTCCCTT  
 CTTGGTGTGGCCAACAAGCAGGAGGCACCTGATGCACTCCGCTGCTTAAGATCAGAAACAGGCTGAGT  
 CTAGAGAGATTCCAGGACCACTGCTGGGAGCTCCGGGGCTGCAGTGCCCTCACTGGGAGGGGCTGCCCCG  
 AGGCCCTGCAGAGCCTGTGGAGCCTCTGAAATCTCGCAGCTGCATGTGTCTGCAGGCGAGGCCATGG  
 GGCTGAGCGCGGAGACAGCAAGAGATCT

**ACGCGT**ACGCGGCCGCTCGAGCAGAACTCATCTCAGAAGAGGATCTGGCAGCAATGATATCCTGGATT  
 ACAAGGATGACGACGATAAGGTTTAA

**Protein Sequence:** >RC203868 protein sequence  
 Red=Cloning site Green=Tags(s)

MGSVNSRGHKAEAVMMGLDSAGKTTLLYKLGKQLVETLPTVGFNVEPLKAPGHVSLTLWDVGGQAPL  
 RASWKDYLEGTDILVYVLDSTDEARLPESAAELTEVLNDPNMAGVPFLVLANKQEAPDALPLLKIRNRLS  
 LERFQDHCWELRGCSALTGEGLPEALQSLWLLKSRSCMCLQARAHGAERGD SKRS

**TRTRPLEQKLI**SEEDLAANDILDYKDDDDKV



[View online »](#)

**Chromatograms:** [https://cdn.origene.com/chromatograms/mk6310\\_c11.zip](https://cdn.origene.com/chromatograms/mk6310_c11.zip)

**Restriction Sites:** SgfI-MluI

**Cloning Scheme:**



**ACCN:** NM\_138450

**ORF Size:** 588 bp

**OTI Disclaimer:** The molecular sequence of this clone aligns with the gene accession number as a point of reference only. However, individual transcript sequences of the same gene can differ through naturally occurring variations (e.g. polymorphisms), each with its own valid existence. This clone is substantially in agreement with the reference, but a complete review of all prevailing variants is recommended prior to use. [More info](#)

**OTI Annotation:** This clone was engineered to express the complete ORF with an expression tag. Expression varies depending on the nature of the gene.

**Components:** The ORF clone is ion-exchange column purified and shipped in a 2D barcoded Matrix tube containing 10ug of transfection-ready, dried plasmid DNA (reconstitute with 100 ul of water).

**Reconstitution Method:**

1. Centrifuge at 5,000xg for 5min.
2. Carefully open the tube and add 100ul of sterile water to dissolve the DNA.
3. Close the tube and incubate for 10 minutes at room temperature.
4. Briefly vortex the tube and then do a quick spin (less than 5000xg) to concentrate the liquid at the bottom.
5. Store the suspended plasmid at -20°C. The DNA is stable for at least one year from date of shipping when stored at -20°C.

**Note:** Plasmids are not sterile. For experiments where strict sterility is required, filtration with 0.22um filter is required.

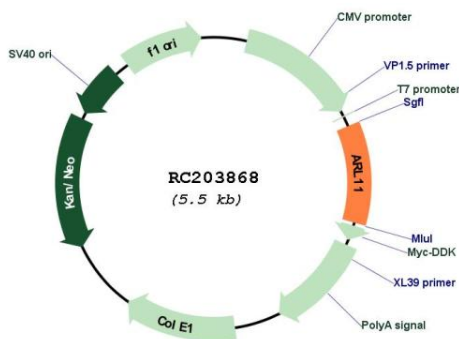
**RefSeq:** [NM\\_138450.6](#)

**RefSeq Size:** 3760 bp

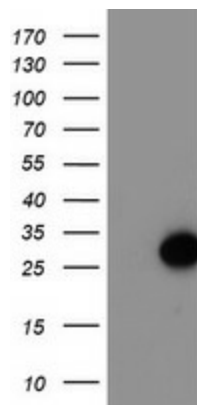
RefSeq ORF: 591 bp  
 Locus ID: 115761  
 UniProt ID: [Q969Q4](#)  
 Cytogenetics: 13q14.2  
 MW: 21.4 kDa

**Gene Summary:** This gene encodes a tumor suppressor related to the ADP-ribosylation factor (ARF) family of proteins. The encoded protein may play a role in apoptosis in a caspase-dependent manner. Polymorphisms in this gene have been associated with some familial cancers. [provided by RefSeq, May 2010]

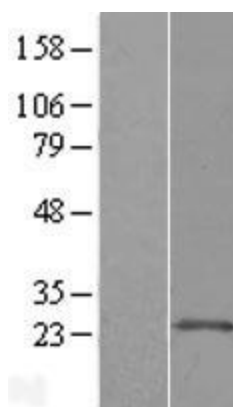
**Product images:**



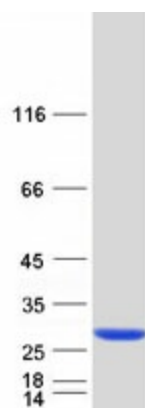
Circular map for RC203868



HEK293T cells were transfected with the pCMV6-ENTRY control (Cat# [PS100001], Left lane) or pCMV6-ENTRY ARL11 (Cat# RC203868, Right lane) cDNA for 48 hrs and lysed. Equivalent amounts of cell lysates (5 ug per lane) were separated by SDS-PAGE and immunoblotted with anti-ARL11(Cat# [TA503903]). Positive lysates [LY408600] (100ug) and [LC408600] (20ug) can be purchased separately from OriGene.



Western blot validation of overexpression lysate (Cat# [LY408600]) using anti-DDK antibody (Cat# [TA50011-100]). Left: Cell lysates from untransfected HEK293T cells; Right: Cell lysates from HEK293T cells transfected with RC203868 using transfection reagent MegaTran 2.0 (Cat# [TT210002]).



Coomassie blue staining of purified ARL11 protein (Cat# [TP303868]). The protein was produced from HEK293T cells transfected with ARL11 cDNA clone (Cat# RC203868) using MegaTran 2.0 (Cat# [TT210002]).