

## Product datasheet for **RC203867**

### LINGO1 (NM\_032808) Human Tagged ORF Clone

#### Product data:

Product Type:	Expression Plasmids
Product Name:	LINGO1 (NM_032808) Human Tagged ORF Clone
Tag:	Myc-DDK
Symbol:	LINGO1
Synonyms:	LERN1; LRRN6A; MRT64; UNQ201
Mammalian Cell Selection:	Neomycin
Vector:	pCMV6-Entry (PS100001)
E. coli Selection:	Kanamycin (25 ug/mL)



[View online »](#)

**ORF Nucleotide Sequence:**

>RC203867 ORF sequence  
 Red=Cloning site Blue=ORF Green=Tags(s)

TTTTGTAATACGACTCACTATAGGGCGGCCGGAATTCGTCGACTGGATCCGGTACCGAGGAGATCTGCC  
 GCC**GCGATCGCC**

ATGCAGGTGAGCAAGAGGATGCTGGCGGGGGCGTGAGGAGCATGCCAGCCCCCTCTGGCCTGCTGGC  
 AGCCCATCTCTGCTGGTGTGGGCTCAGTGCTGTAGGCTCGGCCACGGGCTGCCCGCCCGCTGCGA  
 GTGCTCCGCCCAGGACCGCTGTGCTGTGCCACCGCAAGCGCTTTGTGGCAGTCCCGAGGGCATCCCC  
 ACCGAGACCGCCTGCTGGACCTAGGCAAGAACCGCATCAAACGCTCAACCAGGACGAGTTCGCCAGCT  
 TCCCGCACCTGGAGGAGCTGGAGCTCAACGAGAACATCGTGAGCGCCGTGGAGCCCGGCCCTTCAACAA  
 CCTCTTCAACCTCCGACGCTGGGTCTCCGACGCAACCGCTGAAGCTCATCCCGCTAGGCGTCTTCACT  
 GGCCTCAGCAACCTGACCAAGCTGGACATCAGCGAGAACAAGATCGTTATCTACTGGACTACATGTTTC  
 AGGACCTGTACAACCTCAAGTCACTGGAGTTGGCGACAATGACCTCGTCTACATCTCACCGCGCCTT  
 CAGCGGCCTCAACAGCCTGGAGCAGCTGACGCTGGAGAAATGCAACCTGACCTCCATCCCCACCGAGGCG  
 CTGTCCCACCTGCACGGCCTCATCGTCTGAGGCTCCGGCACCTCAACATCAATGCCATCCGGGACTACT  
 CTTTCAAGAGGCTGTACCGACTCAAGGTCTTGGAGATCTCCCACTGGCCCTACTTGGACACCATGACACC  
 CAACTGCCTCTACGGCCTCAACCTGACGTCCCTGTCCATCACACTGCAATCTGACCGCTGTGCCCTAC  
 CTGGCCGTCGCCACCTAGTCTATCTCCGCTTCTCAACCTCTCTACAACCCCATCAGCACCATTGAGG  
 GCTCCATGTTGCATGAGCTGCTCCGGCTGCAGGAGATCCAGCTGGTGGCGGGCAGCTGGCCGTGGTGA  
 GCCCTATGCCTCCGCGGCCTCAACTACCTGCGCGTGTCAATGTCTCTGGCAACCAGCTGACCACACTG  
 GAGGAATCAGTCTTCACTCGGTGGGCAACCTGGAGACTCATCTGGACTCCAACCCGCTGGCCTGGC  
 ACTGTCCGCTCCTGTGGGTGTTCCGGCGCCGCTGGCGGCTCAACTCAACCGCAGCAGCCACGTCGCGC  
 CACGCCCGAGTTTGTCCAGGGCAAGGAGTTCAAGGACTTCCCTGATGTGCTACTGCCAACTACTTACC  
 TGCCGCCGCGCCGCATCCGGGACCGCAAGGCCAGCAGGTGTTTGTGGACGAGGGCCACACGGTGCAGT  
 TTGTGTGCCGGGCGATGGCGACCCGCCCGCCCATCTCTGGCTCTACCCCGAAAGCACCTGGTCTC  
 AGCCAAGAGCAATGGCGGCTCACAGTCTTCCCTGATGGCAGCTGGAGGTGCGCTACGCCCAGGTACAG  
 GACAACGGCACGTACCTGTGCATCGCGGCAACGCGGGCGGCAACGACTCCATGCCCGCCACCTGCATG  
 TGCGCAGTACTCGCCGACTGGCCCATCAGCCCAACAAGACCTTCGCTTTCATCTCCAACCAGCCGGG  
 CGAGGGAGAGGCCAACAGCACCCGCGCCACTGTGCCTTCCCTTCGACATCAAGACCCTCATCATCGCC  
 ACCACCATGGGCTTCATCTTTTCTGGCGTCTGCTCTTCTGCCTGGTGTGCTGTTTCTCTGGAGCC  
 GGGCAAGGGCAACACAAGCACAAATCGAGATCGAGTATGTGCCCCGAAAGTCGGACGACGCATCAG  
 CTCGCCGACGCGCCCGCAAGTTCAACATGAAGATGATA

**ACGCGT**ACGCGGCCGCTCGAGCAGAACTCATCTCAGAAGAGGATCTGGCAGCAAATGATATCCTGGATT  
 ACAAGGATGACGACGATAAGGTTTAA

**Protein Sequence:**

>RC203867 protein sequence  
 Red=Cloning site Green=Tags(s)

MQVSKRMLAGGVRSMPSLLACWQPILLVLSVLSGSATGCPPRCECSAQDRAVLCHRKRFAVPEGIP  
 TETRLDLGKNRIKTLNQDEFASPHLEELNENIVSAVEPGAFNLFNLRTLGLRSNRLKLIPLGVFT  
 GLSNLTKLDISENKIVILLDYMFQDLYNLKSLEVGDNLDVYISHRAFSGLNSLEQLTLEKCNLTSIPTEA  
 LSHLHGLIVLRLRHLNINAIIRDYSFKRLYRLKVLIEISHWPYLDTMTPNCLYGLNLTSLSITHCNLTAVPY  
 LAVRHLVYLRFLNLSYNPISTIEGSMHELLRLQEIQLVGGQLAVVEPYAFRGLNYLRVLNVSGNQLTTL  
 EESVFHSGNLETLILDSNPLACDRLLWVFRRWRLNFRQQPTCATPEFVQKFKDFDPVLLPNYFT  
 CRRARIRDRKAQQVFVDEGHTVQFVCRADGDPPAILWLSPRKHLVSAKSNRGLTVFPDGTLEVRYAQVQ  
 DNGTYLCAANAGGNSMPAHLHVRYSYSPDWPHPNKTFAFISNQPGEGEANSTRATVPFPFDIKTLIIA  
 TTMGFIISFLGVVLFCLVLLFLWSRKGKNTKHNIEIEYVPRKSDAGISSADAPRKFNMKMI

**TR**TRPLEQKLISEEDLAANDILDYKDDDDKV

Chromatograms: [https://cdn.origene.com/chromatograms/mk6302\\_c07.zip](https://cdn.origene.com/chromatograms/mk6302_c07.zip)

Restriction Sites: SgfI-MluI

Cloning Scheme:



ACCN: NM\_032808

ORF Size: 1860 bp

OTI Disclaimer: The molecular sequence of this clone aligns with the gene accession number as a point of reference only. However, individual transcript sequences of the same gene can differ through naturally occurring variations (e.g. polymorphisms), each with its own valid existence. This clone is substantially in agreement with the reference, but a complete review of all prevailing variants is recommended prior to use. [More info](#)

OTI Annotation: This clone was engineered to express the complete ORF with an expression tag. Expression varies depending on the nature of the gene.

Components: The ORF clone is ion-exchange column purified and shipped in a 2D barcoded Matrix tube containing 10ug of transfection-ready, dried plasmid DNA (reconstitute with 100 ul of water).

Reconstitution Method:

1. Centrifuge at 5,000xg for 5min.
2. Carefully open the tube and add 100ul of sterile water to dissolve the DNA.
3. Close the tube and incubate for 10 minutes at room temperature.
4. Briefly vortex the tube and then do a quick spin (less than 5000xg) to concentrate the liquid at the bottom.
5. Store the suspended plasmid at -20°C. The DNA is stable for at least one year from date of shipping when stored at -20°C.

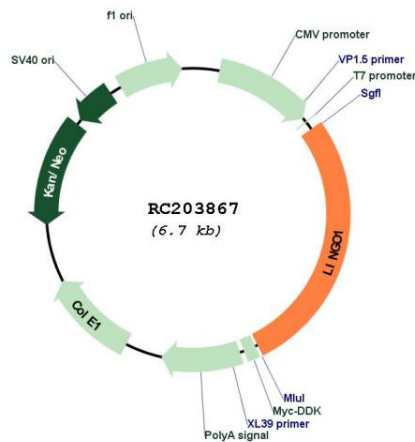
RefSeq: [NM\\_032808.7](#)

RefSeq Size: 3109 bp

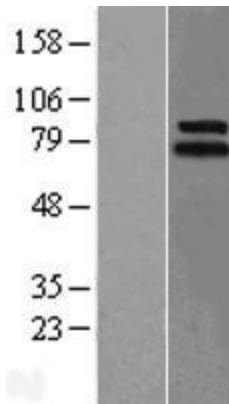
RefSeq ORF: 1863 bp

**Locus ID:** 84894  
**UniProt ID:** [Q96FE5](#)  
**Cytogenetics:** 15q24.3  
**Domains:** LRRCT, LRR, ig, Igc2, IG  
**Protein Families:** Druggable Genome, Transmembrane  
**MW:** 69.9 kDa  
**Gene Summary:** Functional component of the Nogo receptor signaling complex (RTN4R/NGFR) in RhoA activation responsible for some inhibition of axonal regeneration by myelin-associated factors (PubMed:14966521, PubMed:15694321). Is also an important negative regulator of oligodentocyte differentiation and axonal myelination (PubMed:15895088). Acts in conjunction with RTN4 and RTN4R in regulating neuronal precursor cell motility during cortical development (By similarity).[UniProtKB/Swiss-Prot Function]

### Product images:



Circular map for RC203867



Western blot validation of overexpression lysate (Cat# [LY409935]) using anti-DDK antibody (Cat# [TA50011-100]). Left: Cell lysates from untransfected HEK293T cells; Right: Cell lysates from HEK293T cells transfected with RC203867 using transfection reagent MegaTran 2.0 (Cat# [TT210002]).



Coomassie blue staining of purified LINGO1 protein (Cat# [TP303867]). The protein was produced from HEK293T cells transfected with LINGO1 cDNA clone (Cat# RC203867) using MegaTran 2.0 (Cat# [TT210002]).