

Product datasheet for RC203862

MAL2 (NM_052886) Human Tagged ORF Clone

Product data:

Product Type: Expression Plasmids
Product Name: MAL2 (NM_052886) Human Tagged ORF Clone
Tag: Myc-DDK
Symbol: MAL2
Mammalian Cell Selection: Neomycin
Vector: pCMV6-Entry (PS100001)
E. coli Selection: Kanamycin (25 ug/mL)
ORF Nucleotide Sequence: >RC203862 ORF sequence
Red=Cloning site Blue=ORF Green=Tags(s)

TTTTGTAATACGACTCACTATAGGGCGGCCGGGAATTCGTCGACTGGATCCGGTACCGAGGAGATCTGCC
GCC**CGATCGCC**

ATGTCGGCCGGCGGAGCGTCAGTCCCGCCGCCCGAACCCCGCGTGTCTTCCCGCCGCCCGGGTCA
CCCTGCCCCGGCCCGGACATCCTGCGGACCTACTCGGGCGCCTTCGTCTGCCTGGAGATTCTGTTCCG
GGGTCTTGTCTGGATTTTGGTTGCCTCCTCCAATGTTCTCTACTACTACAAGGATGGGTATGTTT
GTGTCCGTGACAGCGTTTTTCTTTTCGCTCCTCTTTCTGGCATGTTCTCTCTGGCATGGTGGCTCAA
TTGATGCTAACTGGAACCTCCTGGATTTTGCCTACCATTTTACAGTATTTGTCTTCTATTTGGAGCCTT
TTTATTGGAAGCAGCAGCCACATCCCTGCATGATTTGCATTGCAATAACAACCATAACCGGGCAGCCACTC
CTGAGTGATAACCAGTATAACATAAACGTAGCAGCCTCAATTTTGCCTTTATGACGACAGCTTGTATG
GTTGCAGTTTGGTCTGGCTTTACGAAGATGGCGACCG

ACGCGTACGCGGCCGCTCGAGCAGAACTCATCTCAGAAGAGGATCTGGCAGCAAATGATATCCTGGATT
ACAAGGATGACGACGATAAGGTTTAA

Protein Sequence: >RC203862 protein sequence
Red=Cloning site Green=Tags(s)

MSAGGASVPPPPNPAVSFPFPPRVTLPAGPDILRTYSGAFVCLLEILFGGLVWILVASSNVPLPLLQGWVWF
VSVTAFFFLFLGMFLSGMVAQIDANWNFLDFAYHFTVFVYFGAFLLLEAAATSLHDLHCNTTITGQPL
LSDNQYNINVAASIFAFMTTACYGCSLGLALRRWRP

TRTRPLEQKLISEEDLAANDILDYKDDDDKV

Chromatograms: https://cdn.origene.com/chromatograms/mk6304_g04.zip

Restriction Sites: SgfI-MluI



[View online >](#)

Cloning Scheme:


ACCN: NM_052886

ORF Size: 528 bp

OTI Disclaimer: Due to the inherent nature of this plasmid, standard methods to replicate additional amounts of DNA in E. coli are highly likely to result in mutations and/or rearrangements. Therefore, OriGene does not guarantee the capability to replicate this plasmid DNA. Additional amounts of DNA can be purchased from OriGene with batch-specific, full-sequence verification at a reduced cost. Please contact our customer care team at custsupport@origene.com or by calling 301.340.3188 option 3 for pricing and delivery.

The molecular sequence of this clone aligns with the gene accession number as a point of reference only. However, individual transcript sequences of the same gene can differ through naturally occurring variations (e.g. polymorphisms), each with its own valid existence. This clone is substantially in agreement with the reference, but a complete review of all prevailing variants is recommended prior to use. [More info](#)

OTI Annotation: This clone was engineered to express the complete ORF with an expression tag. Expression varies depending on the nature of the gene.

Components: The ORF clone is ion-exchange column purified and shipped in a 2D barcoded Matrix tube containing 10ug of transfection-ready, dried plasmid DNA (reconstitute with 100 ul of water).

Reconstitution Method:

1. Centrifuge at 5,000xg for 5min.
2. Carefully open the tube and add 100ul of sterile water to dissolve the DNA.
3. Close the tube and incubate for 10 minutes at room temperature.
4. Briefly vortex the tube and then do a quick spin (less than 5000xg) to concentrate the liquid at the bottom.
5. Store the suspended plasmid at -20°C. The DNA is stable for at least one year from date of shipping when stored at -20°C.

RefSeq: [NM_052886.3](#)

RefSeq Size: 2831 bp

RefSeq ORF: 531 bp

Locus ID: 114569

UniProt ID: [Q969L2](#)

Cytogenetics: 8q24.12

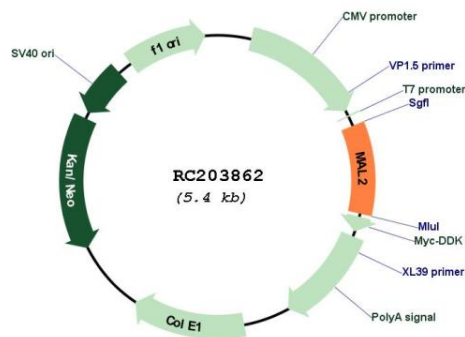
Domains: MARVEL

Protein Families: Transmembrane

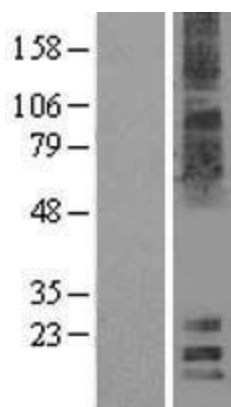
MW: 19.1 kDa

Gene Summary: This gene encodes a multispan transmembrane protein belonging to the MAL proteolipid family. The protein is a component of lipid rafts and, in polarized cells, it primarily localizes to endosomal structures beneath the apical membrane. It is required for transcytosis, an intracellular transport pathway used to deliver membrane-bound proteins and exogenous cargos from the basolateral to the apical surface. [provided by RefSeq, Jul 2008]

Product images:



Circular map for RC203862



Western blot validation of overexpression lysate (Cat# [LY409397]) using anti-DDK antibody (Cat# [TA50011-100]). Left: Cell lysates from untransfected HEK293T cells; Right: Cell lysates from HEK293T cells transfected with RC203862 using transfection reagent MegaTran 2.0 (Cat# [TT210002]).