

## Product datasheet for **RC203860**

### TCTN2 (NM\_024809) Human Tagged ORF Clone

#### Product data:

Product Type:	Expression Plasmids
Product Name:	TCTN2 (NM_024809) Human Tagged ORF Clone
Tag:	Myc-DDK
Symbol:	TCTN2
Synonyms:	C12orf38; JBTS24; MKS8; TECT2
Mammalian Cell Selection:	Neomycin
Vector:	pCMV6-Entry (PS100001)
E. coli Selection:	Kanamycin (25 ug/mL)



[View online »](#)

ORF Nucleotide  
Sequence:

>RC203860 ORF sequence  
Red=Cloning site Blue=ORF Green=Tags(s)

TTTTGTAATACGACTCACTATAGGGCGGCCGGAATTCGTCGACTGGATCCGGTACCGAGGAGATCTGCC  
GCCCGCATCGCC

ATGGGCTTCCAGCCTCCGGCCGCTCTTCTTTGAGGCTTTTCTTCTGACGGGCATCCTGAGGCTTCTGT  
GGGGGACCTGGCTTTCATCCCTCCTTTTATCCGAATGTCGGCCCTGCGGTGAGCGCGTCCCTGGTCGG  
AGACACCGAGGGTGTGACCGTGTCCCTGGCAGTGTGCAGGACGAGGCGGGAATATTGCCAATCCGACG  
TGTGGAGTGTGAACAATGAGACGGAAGACTGGAGCGTACTGTGATCCCGGTGCGAAGGTGTTGGAAG  
TGACAGTGAGGTGAAGAGAGGTCTGGACTGGTGTCTCCAATGAGACAGATTCCTTCTCAGAGTCCCC  
CTGTATCCTCCAGACCCTTCTGGTTTCAGCATCTCATAATTCATCCTGTTGAGCAGTACTACTATTCAA  
GTGGAAATTTATGCCAATCTTCTGACCCATAATGCCTCAGAGAACGTGACTGTCATTCTAACCAGG  
TGTATCAGCCCCTTGGCCCTTGCCTTGAATTTAACAGCTGGAGCCTGTGATGTTGCGTCTGCTGTGA  
CCAGGAATGCTCATCAAATTTAACACGCTGTTGACAGCGTCTGCTTCCCGGCGTGTGGAGGAGAC  
GTCAATCCTCCTTTTATGACAGCTGCTGCTGCTGGGACGACGACAGTGGTGTCCCCGATTGGTTTCCCT  
TTCTGTGTGTGACGTCCTCCCTTGCACACACCTTCTTGGTTACTTCTATCATGGTGTGTTTCCCC  
CAAACAGGACTCTTCTTTGAAGTATATGTGGATACTGACGCAAAAGACTTTGACAGACTTGGTTACAAA  
CAAGGAGATCCCATTATGACTGTAAAGAAGGCATATTTTACTATTCGCGAGGTGTCCCTGGCTGGGAGT  
GTATGCAGAACGCCCCAGTGGCATTCTTCACAATTTTGTGTTAAATGCGTTACTAATTTGAACTATA  
CCAAGAACGAGATGGTATTATCAATGCGAAGATAAAGAATGTTGCCTTAGGAGGCATAGTTACACAAAA  
GTGATCTATGAGGAAGCAACTGACCTAGACAAATTCATACCAATACAGAACTCCTTTAAATAACGGAT  
CAACCCCTAGAATTGTGAATGTGAAGAACATTATTTTCAAATGGAATAATAATACCATCAGTGAAAT  
AAATGTTAAAATTTTAGGGCAGAGATTAATGCCACCAGAAAGGATAATGACACAGAGATTTGTAGTA  
AAATTTTTAAGCTATAATAGTGGTAATGAAGAAGATTATCTGGAAATCCAGTTACCAACTTGGCAAGC  
CTGTCCGAGCTCTAAATATCAACAGGATGAATAATGTCACGACTTTACATCTTTGGCAATCGGCTGGAAG  
GGGTCTGTGTACATCAGCAACTTCAAACCCATTTTATTTGGAGAAAATGACTCTCTGGATGCCTGTTA  
GAAGTCGGGATTAATGAAAATTTGACTCAGCTCAGGGAGAATGCTGTTGAAAGACTTGATTCAATAAC  
AAGCGACTCACGTTGCAATGAGAGGCAACTCCGATTACGCTGATCTTAGTGATGGCTGGCTCGAAATAAT  
ACGTGTAGATGCCCTGATCCAGGTGCAGACCCGCTGGCTAGCAGTGTGAACGGCATGTGCCTGGATATT  
CCTGCTCACCTGAGCATCCGCATCTCATCTCGGATGCTGGCGCGTGGAAAGGATTACTCAGCAGGAGA  
TACTCGGTGTAGAGACAAGTTCTCCTCAGTGAAGTGGCAGTACCAGTGTGGGCTTACCTGTGAGCACA  
GGCCGACCTTCTCCCTATCAGTGATCCGTCAGTTTATTAATAATCCTGCACAGTTACCCACCCCTG  
ACAAGATTCCAGATCAATTATACAGAGTATGACTGCAACAGAAATGAGGTGTGTTGGCCGACGTTCTAT  
ATCCATGGACTCAGTATTATCAAGGGGAGCTGCATTCTCAGTGTGTTGCTAAGGGCTTACTGTTGCTGTT  
GTTCTCACATTGGCCTTGTCTCAGCAACCCCTGGACCAGAATATGCAAAGCCTATAGT

ACGCGTACGCGGCCGCTCGAGCAGAACTCATCTCAGAAGAGGATCTGGCAGCAATGATATCCTGGATT  
ACAAGGATGACGACGATAAGGTTTAA

**Protein Sequence:** >RC203860 protein sequence  
Red=Cloning site Green=Tags(s)

```

MGFQPPAALLRLFLQILRLLWGLAFIPPFIRMSGPAVSASLVGDTEGVTVSLAVLQDEAGILPIPT
CGVLNNETEDWSVTVIPGAKVLEVTVRWKRGLDWCSSNETDSFSESPCILQTLVSAHNSSCSAHLLIQ
VEIYANSSLTHNASENVTVIPNQYYQLGPCPCNLTAGACDVRCCCDQECSSNLTLFRRSFTGVFGGD
VNPPFDQLCSAGTTTRGVDPDFPFLCVQSPLANTPFLGYFYHGAVSPKQDSSFEVYVDTDAKDFADFGYK
QGDPIMTVKKAYFTIPQVSLAGQCMQNPVAFHNFVVKCVTNLELYQERDGIINAKIKNVALGGIVTPK
VIYEEATDLDFITNTEPLNNGSTPRIVNVEEHYIFKWNNTISEINVKIFRAEINAHQKIGMTQRFVV
KFLSYNSGNEEELSGNPGYQLGKPVRALNINRMNNVTTLHLWQSAGRGLCTSATFKPILFGENVLSGCLL
EVGINENCTQLRENAVERLDSL IQATHVAMRGNSDYADLSDGWLEIIRVDAPDPGADPLASSVNGMCLDI
PAHL SIRILISDAGAVEGITQQEILGVETRFSSVNWQYQCGLTCEHKADLLPISASVQFIKIPAQLPHPL
TRFQINYTEYDCNRNEVCWPQLLYPWTQYYQGELHSQCVAKGLLLLLLFLTLALFLSNPWTRICKAYS
    
```

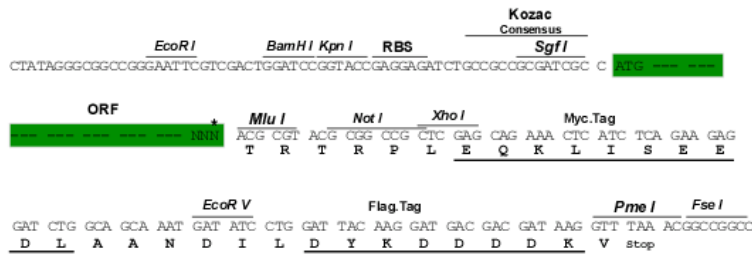
TRTRPLEQKLISEEDLAANDILDYKDDDDKV

**Chromatograms:** [https://cdn.origene.com/chromatograms/mk6306\\_b04.zip](https://cdn.origene.com/chromatograms/mk6306_b04.zip)

**Restriction Sites:** SgfI-MluI

**Cloning Scheme:**

Cloning sites used for ORF Shuttling:



**ACCN:** NM\_024809

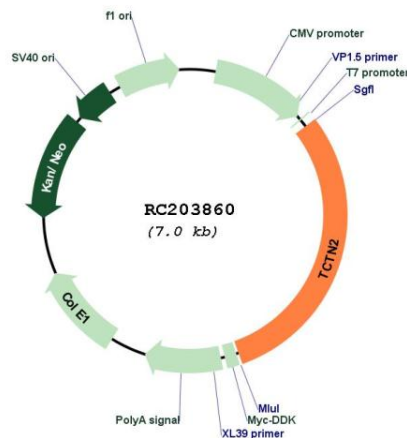
**ORF Size:** 2091 bp

**OTI Disclaimer:** The molecular sequence of this clone aligns with the gene accession number as a point of reference only. However, individual transcript sequences of the same gene can differ through naturally occurring variations (e.g. polymorphisms), each with its own valid existence. This clone is substantially in agreement with the reference, but a complete review of all prevailing variants is recommended prior to use. [More info](#)

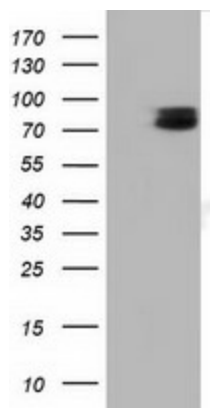
**OTI Annotation:** This clone was engineered to express the complete ORF with an expression tag. Expression varies depending on the nature of the gene.

<b>Components:</b>	The ORF clone is ion-exchange column purified and shipped in a 2D barcoded Matrix tube containing 10ug of transfection-ready, dried plasmid DNA (reconstitute with 100 ul of water).
<b>Reconstitution Method:</b>	<ol style="list-style-type: none"> <li>1. Centrifuge at 5,000xg for 5min.</li> <li>2. Carefully open the tube and add 100ul of sterile water to dissolve the DNA.</li> <li>3. Close the tube and incubate for 10 minutes at room temperature.</li> <li>4. Briefly vortex the tube and then do a quick spin (less than 5000xg) to concentrate the liquid at the bottom.</li> <li>5. Store the suspended plasmid at -20°C. The DNA is stable for at least one year from date of shipping when stored at -20°C.</li> </ol>
<b>RefSeq:</b>	<u><a href="#">NM_024809.5</a></u>
<b>RefSeq Size:</b>	2930 bp
<b>RefSeq ORF:</b>	2094 bp
<b>Locus ID:</b>	79867
<b>UniProt ID:</b>	<u><a href="#">Q96GX1</a></u>
<b>Cytogenetics:</b>	12q24.31
<b>MW:</b>	76.9 kDa
<b>Gene Summary:</b>	<p>This gene encodes a type I membrane protein that belongs to the tectonic family. Studies in mice suggest that this protein may be involved in hedgehog signaling, and essential for ciliogenesis. Mutations in this gene are associated with Meckel syndrome type 8. Alternatively spliced transcript variants encoding different isoforms have been found for this gene. [provided by RefSeq, Oct 2011]</p>

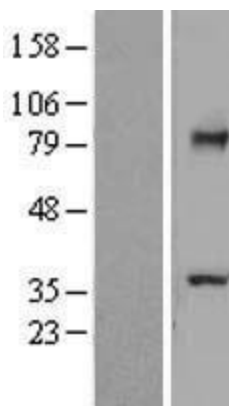
### Product images:



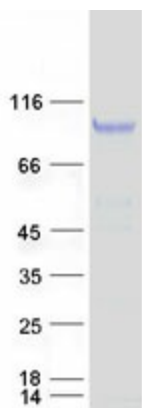
Circular map for RC203860



HEK293T cells were transfected with the pCMV6-ENTRY control (Cat# [PS100001], Left lane) or pCMV6-ENTRY TCTN2 (Cat# RC203860, Right lane) cDNA for 48 hrs and lysed. Equivalent amounts of cell lysates (5 ug per lane) were separated by SDS-PAGE and immunoblotted with anti-TCTN2(Cat# [TA501477]). Positive lysates [LY411064] (100ug) and [LC411064] (20ug) can be purchased separately from OriGene.



Western blot validation of overexpression lysate (Cat# [LY411064]) using anti-DDK antibody (Cat# [TA50011-100]). Left: Cell lysates from untransfected HEK293T cells; Right: Cell lysates from HEK293T cells transfected with RC203860 using transfection reagent MegaTran 2.0 (Cat# [TT210002]).



Coomassie blue staining of purified TCTN2 protein (Cat# [TP303860]). The protein was produced from HEK293T cells transfected with TCTN2 cDNA clone (Cat# RC203860) using MegaTran 2.0 (Cat# [TT210002]).