

Product datasheet for **RC203859**

C9orf43 (NM_152786) Human Tagged ORF Clone

Product data:

Product Type:	Expression Plasmids
Product Name:	C9orf43 (NM_152786) Human Tagged ORF Clone
Tag:	Myc-DDK
Symbol:	C9orf43
Mammalian Cell Selection:	Neomycin
Vector:	pCMV6-Entry (PS100001)
E. coli Selection:	Kanamycin (25 ug/mL)



[View online »](#)

ORF Nucleotide Sequence:

>RC203859 ORF sequence
 Red=Cloning site Blue=ORF Green=Tags(s)

TTTTGTAATACGACTCACTATAGGGCGGCCGGGAATTCGTCGACTGGATCCGGTACCGAGGAGATCTGCC
 GCC**CGCATCGCC**

ATGGACTTGCCAGATGAGAGCCAGTGGGACGAAACCACCTGTGGCTTGGCTGTTTGTTCAGCACCCACAAT
 GCTGGGCAACTATCCGCCGATTGAGAGGGCCATCCTCGAATCCTCGGCTCATCCTGCAAACTCCCT
 GGATGCTGAAGATAAACTCCCAGTGCTCACCGTGGTAGACATCTTAGATCCGGCTTTCAGCTCATCAT
 TTACCAGAATGTACCTTTACTAAGGCCATTCTTTATTGTCTCAGAGTTCAAAGTTTTACTCCAAATTTT
 ATGGCAGGCCCTCCGAAGGTTTACCTGACAAAAGTTTGATCAACTGTACTAACAGACTTCCCAAATTTCC
 AGTGTGGAATTTGAATGAGACGCAACTTCCCTGCCCTGAAGATGTTAGAAATATGGTTGATTGTGGATC
 CCAGAAGAACAGAGATACATGTGAGCCAGCATGGGAAGAAGAAAAGAAAGAACTCGGCAGTGAAAAGCA
 AGTCATTTCTGGGTCTCTCTGGAATCAGTCCGAGGAACACGAGTAGGAACACCAGGGATGATCGTGCC
 TCCCCAACCCAGTGAATTGTCTGAACAATTCAGTTCAGATTTCTACCTCTCTGGGCTCAATCCGAA
 GCGTTACCTCAGGATCTACTGAAGGAATTTTGCAGGTGAAAAGCAAACCATGCTCTGTCCAGAGATGA
 AGATAAAATTGGCCATGATGAAAAGAATCTTCCCTTGGAAAAGAACCGACCTGACAGTGTGATTTCTTC
 TAAGATGTTTCTATCTATACACCGCCTCACCTGGAAAGACCAGCACTGCGATATCCTGAACGTTTGAAG
 AAATTACATAACCTGAAGACAGAAGTTACAGGAAACAGCAGCAGCGGCAGCAGCAGCAGCAGCAGCAAC
 AGAAGAAGGTGAAAACACCTATTAAGAAACAGGAGGCTAAAAAGAAAGCCAAGAGTGATCCAGGGATCCA
 GAGCACTTACATAAACATCCAGTTACCACCGTTCATGACCGTCTCTATGGTTACAGAATCTGCCAGGT
 CAGAACAGTGACATGAAGCAGCAGCAGCAGATGGAAAAAGGAACCACTTCGAAACAGGATTCCACGGAGA
 GACCAAAGATGAACACTATGACCATGCGGATTTCCACCACAGTGTAAAAAGTCTGAATTTGATGAAAC
 AGAACCCACTAACAAAGGACATTAGTGCTCCAGTGGACGCTGTGCCAGAAGCCAGGCTGCCAGGCAAAAG
 AAGATCTCTTTAACTTTTCAAAATTATGGCTAGCACAGGCTGGAACCTGAGCTCAAACACTTAGGA
 TTCTTCAGGACTGATGATGAGGATGAGGAGGACCAGTCTCTGGGCAGAG

ACGCGTACGCGGCCGCTCGAGCAGAAACTCATCTCAGAAGAGGATCTGGCAGCAAATGATATCCTGGATT
 ACAAGGATGACGACGATAAGGTTTAA

Protein Sequence:

>RC203859 protein sequence
 Red=Cloning site Green=Tags(s)

MDLPDESQWDETTGLAVCQHPQCWATIRRIERGHPRILGSSCKTPLDAEDKLPVLTVDIILDSGFAAHH
 LPECTFTKAHSLLSQSSKFYSKFHGRPPKGLPDKSLINCTNRLPKFPVLNLNETQLPCPEDVRNMVVLWI
 PEETEIHVSQHGGKKRKN SAVKSKSFLGLSGNQSAGTRVGTGPMIVPPPTPVQLSEQFSSDFLPLWAQSE
 ALPQDLLKELLPGGKQTMLCPEMKIKLAMMKNLPLEKNRPDSVISSKMFLSIHRLTLERPALRYPERLK
 KLHNLKTEGYRQQQRQQQQQQKVKVTPIKKQEAKKKA KSDPGIQSTSHKHPVTVHDRLYGYRTLPG
 QNSDMKQQQMEKGTTSKQDSTERPKMNYDHADFHHSVK SPELYETPTNKDISAPVDAVPEAQAARQK
 KISFNSEIMASTGWNSELKLLRILQTDDEDEEDQSSGAE

TRTRPLEQKLISEEDLAANDILDYKDDDDKV

Chromatograms:

https://cdn.origene.com/chromatograms/mk6523_f03.zip

Restriction Sites:

SgfI-MluI

Cloning Scheme:


ACCN: NM_152786

ORF Size: 1383 bp

OTI Disclaimer: The molecular sequence of this clone aligns with the gene accession number as a point of reference only. However, individual transcript sequences of the same gene can differ through naturally occurring variations (e.g. polymorphisms), each with its own valid existence. This clone is substantially in agreement with the reference, but a complete review of all prevailing variants is recommended prior to use. [More info](#)

OTI Annotation: This clone was engineered to express the complete ORF with an expression tag. Expression varies depending on the nature of the gene.

Components: The ORF clone is ion-exchange column purified and shipped in a 2D barcoded Matrix tube containing 10ug of transfection-ready, dried plasmid DNA (reconstitute with 100 ul of water).

Reconstitution Method:

1. Centrifuge at 5,000xg for 5min.
2. Carefully open the tube and add 100ul of sterile water to dissolve the DNA.
3. Close the tube and incubate for 10 minutes at room temperature.
4. Briefly vortex the tube and then do a quick spin (less than 5000xg) to concentrate the liquid at the bottom.
5. Store the suspended plasmid at -20°C. The DNA is stable for at least one year from date of shipping when stored at -20°C.

Note: Plasmids are not sterile. For experiments where strict sterility is required, filtration with 0.22um filter is required.

RefSeq: [NM_152786.3](#)

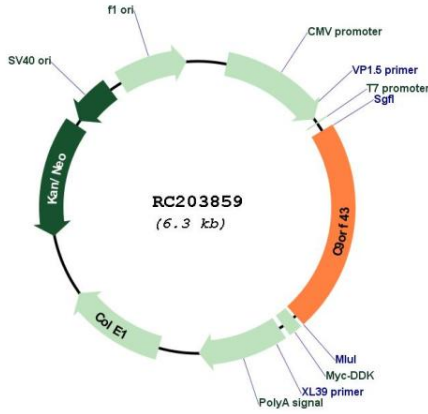
RefSeq Size: 2164 bp

RefSeq ORF: 1386 bp

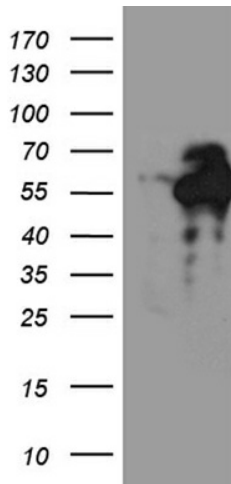
Locus ID: 257169

UniProt ID: Q8TAL5
 Cytogenetics: 9q32
 MW: 52.2 kDa

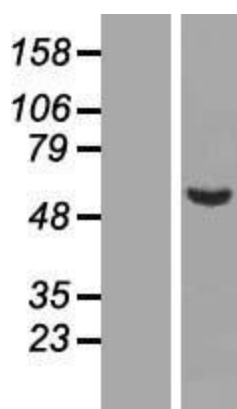
Product images:



Circular map for RC203859



HEK293T cells were transfected with the pCMV6-ENTRY control (Cat# [PS100001], Left lane) or pCMV6-ENTRY C9orf43 (Cat# RC203859, Right lane) cDNA for 48 hrs and lysed. Equivalent amounts of cell lysates (5 ug per lane) were separated by SDS-PAGE and immunoblotted with anti-C9orf43 (Cat# [TA810854])(1:500). Positive lysates [LY407278] (100ug) and [LC407278] (20ug) can be purchased separately from OriGene.



Western blot validation of overexpression lysate (Cat# [LY407278]) using anti-DDK antibody (Cat# [TA50011-100]). Left: Cell lysates from untransfected HEK293T cells; Right: Cell lysates from HEK293T cells transfected with RC203859 using transfection reagent MegaTran 2.0 (Cat# [TT210002]).