

## Product datasheet for **RC203855**

### FAM174A (NM\_198507) Human Tagged ORF Clone

#### Product data:

**Product Type:** Expression Plasmids  
**Product Name:** FAM174A (NM\_198507) Human Tagged ORF Clone  
**Tag:** Myc-DDK  
**Symbol:** FAM174A  
**Synonyms:** HGS\_RE408; NS5ATP6; TMEM157; UNQ1912  
**Mammalian Cell Selection:** Neomycin  
**Vector:** pCMV6-Entry (PS100001)  
**E. coli Selection:** Kanamycin (25 ug/mL)  
**ORF Nucleotide Sequence:** >RC203855 ORF sequence  
 Red=Cloning site Blue=ORF Green=Tags(s)

TTTTGTAATACGACTCACTATAGGGCGCCGGGAATTCGTCGACTGGATCCGGTACCGAGGAGATCTGCC  
 GCC**CGATCGCC**

ATGAAGGCTCGCAGTGCTGCTGTCTCAGCCACCTTTGGCTTCCGTCTCCTCTGCTGTTGCTGC  
 CTGAACTAAGCGGGCCCTGGCAGTCCTGCTGCAGGCAGCCGAGGCCGCGCCAGGTCTTGGGCTCTGA  
 CCCTAGACCACGGACATTACCGCCGCTGCCACCGGGCCCTACCCCTGCCAGCAGCCGGGCCGTTGCTG  
 GCTGAAGCTCGGGGCCGCGGGCTCCGAGGGAGGCAATGGCAGCAACCTGTGGCCGGCTTGAGACGG  
 ACGATCACGGAGGAAGCCGGGAAGGCTCGGTGGTGGCGCCTTGCTGTGAGCCCCAACCTGGCGA  
 CAAGCCCATGACCCAGCGGCCCTGACCGTGTGATGGTGGTGGCAGCGCGGTGCTGGTGTACTTCGTG  
 GTCAGGACGGTCAGGATGAGAAGAAGAAACCGAAAGACTAGGAGATATGGAGTTTGGACTAACATAG  
 AAAATATGGAATTGACACCTTTAGAACAGGATGATGAGGATGATGACAACACGTTGTTTGTGCAATCA  
 TCCTCGAAGA

**ACGCGT**ACGCGGCCGCTCGAGCAGAACTCATCTCAGAAGAGGATCTGGCAGCAATGATATCCTGGATT  
 ACAAGGATGACGACGATAAGGTTTAA

**Protein Sequence:** >RC203855 protein sequence  
 Red=Cloning site Green=Tags(s)

MKASQCCCLSHLLASVLLLLLPEL SGPLAVLLQAAEAPGLGPPDPRPRTLPLPPGPTAQQPGRGL  
 AEAAGPRGSEGGNSNPVAGLETDDHGKAGEGSVGGGLAVSPNPGDKPMTQRALTVLMVVS GAVLVYFV  
 VRTVRRRRNRKTRRYGVLDNIENMEL TPLEQDDEDDNTLFDANHPRR

**TRTRPLEQKLI**SEEDLAANDILDYKDDDDKV



[View online »](#)

Chromatograms: [https://cdn.origene.com/chromatograms/mk6324\\_g04.zip](https://cdn.origene.com/chromatograms/mk6324_g04.zip)

Restriction Sites: SgfI-MluI

Cloning Scheme:



ACCN: NM\_198507

ORF Size: 570 bp

OTI Disclaimer: Due to the inherent nature of this plasmid, standard methods to replicate additional amounts of DNA in *E. coli* are highly likely to result in mutations and/or rearrangements. Therefore, OriGene does not guarantee the capability to replicate this plasmid DNA. Additional amounts of DNA can be purchased from OriGene with batch-specific, full-sequence verification at a reduced cost. Please contact our customer care team at [custsupport@origene.com](mailto:custsupport@origene.com) or by calling 301.340.3188 option 3 for pricing and delivery.

The molecular sequence of this clone aligns with the gene accession number as a point of reference only. However, individual transcript sequences of the same gene can differ through naturally occurring variations (e.g. polymorphisms), each with its own valid existence. This clone is substantially in agreement with the reference, but a complete review of all prevailing variants is recommended prior to use. [More info](#)

OTI Annotation: This clone was engineered to express the complete ORF with an expression tag. Expression varies depending on the nature of the gene.

Components: The ORF clone is ion-exchange column purified and shipped in a 2D barcoded Matrix tube containing 10ug of transfection-ready, dried plasmid DNA (reconstitute with 100 ul of water).

- Reconstitution Method:**
1. Centrifuge at 5,000xg for 5min.
  2. Carefully open the tube and add 100ul of sterile water to dissolve the DNA.
  3. Close the tube and incubate for 10 minutes at room temperature.
  4. Briefly vortex the tube and then do a quick spin (less than 5000xg) to concentrate the liquid at the bottom.
  5. Store the suspended plasmid at -20°C. The DNA is stable for at least one year from date of shipping when stored at -20°C.

**RefSeq:** [NM\\_198507.3](#)

**RefSeq Size:** 1260 bp

**RefSeq ORF:** 573 bp

**Locus ID:** 345757

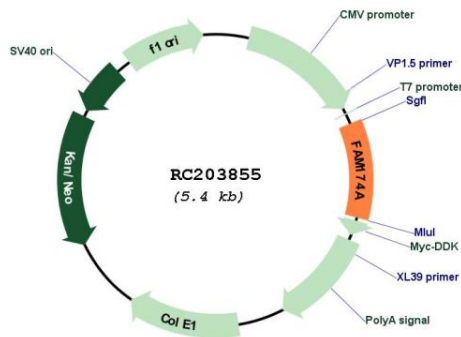
**UniProt ID:** [Q8TBP5](#)

**Cytogenetics:** 5q21.1

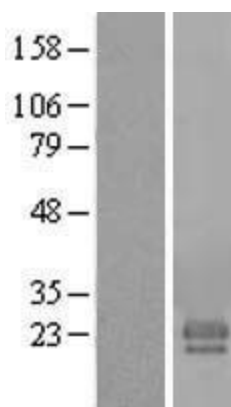
**Protein Families:** Transmembrane

**MW:** 20 kDa

**Product images:**



Circular map for RC203855



Western blot validation of overexpression lysate (Cat# [LY404894]) using anti-DDK antibody (Cat# [TA50011-100]). Left: Cell lysates from untransfected HEK293T cells; Right: Cell lysates from HEK293T cells transfected with RC203855 using transfection reagent MegaTran 2.0 (Cat# [TT210002]).