

Product datasheet for RC203854

NORE1 (RASSF5) (NM_182665) Human Tagged ORF Clone

Product data:

| | |
|---------------------------|---|
| Product Type: | Expression Plasmids |
| Product Name: | NORE1 (RASSF5) (NM_182665) Human Tagged ORF Clone |
| Tag: | Myc-DDK |
| Symbol: | NORE1 |
| Synonyms: | Maxp1; NORE1; NORE1A; NORE1B; RAPL; RASSF3 |
| Mammalian Cell Selection: | Neomycin |
| Vector: | pCMV6-Entry (PS100001) |
| E. coli Selection: | Kanamycin (25 ug/mL) |
| ORF Nucleotide Sequence: | >RC203854 ORF sequence Red=Cloning site Blue=ORF Green=Tags(s) |

TTTTGTAATACGACTCACTATAGGGCGCCGGGAATTCGTCGACTGGATCCGGTACCGAGGAGATCTGCC
GCC**CGATCGCC**

ATGACCGTGGACAGCAGCATGAGCAGTGGTACTGCAGCCTGGACGAGGAACTGGAAGACTGCTTCTTCA
CTGCTAAGACTACCTTTTTTCAGAAATGCGCAGAGCAAACATCTTTCAAAGAATGTCTGTAACCTGTGGA
GGAGACACAGCGCCCGCCACACTGCAGGAGATCAAGCAGAAGATCGACAGCTACAACACGCGAGAGAAG
AACTGCCTGGGCATGAACTGAGTGAAGACGGCACCTACACGGGTTTCATCAAAGTGCATCTGAAACTCC
GGCGGCCTGTGACGGTGCCTGCTGGGATCCGGCCCACTCATCTATGATGCCATCAAGGAGGTGAACCT
GGCGGCTACCACGACAAGCGGACATCCTTCTACCTGCCCTAGATGCCATCAAGCAGCTGCACATCAGC
AGCACCACCACCGTCAGTGAGGTCAAGGGGCTGCTCAAGAAGTTCATGGTTGTGGACAATCCCCAGA
AGTTTGCACCTTTTAAGCGGATACACAAGGACGGACAAGTGTCTTCCAGAACTCTCCATTGCTGACCG
CCCCCTACCTGCGCCTGCTTGTGGCCTGACACGGAGGTCTCAGCTTTGTGCTAAAGGAGAATGAA
ACTGGAGAGGTAGAGTGGGATGCCTTCTCCATCCCTGAATTCAGAACTTCTAAACAATCTGAAAAAG
AGGAGCAGGACAAAATCCAACAAGTGAAAAGAAGTATGACAAGTTTAGGCAGAACTGGAGGAGGCCTT
AAGAGAATCCCAGGGCAAACCTGGG

ACGCGTACGCGGCCGCTCGAGCAGAACTCATCTCAGAAGAGGATCTGGCAGCAAATGATATCCTGGATT
ACAAGGATGACGACGATAAGGTTTAA



[View online »](#)

Protein Sequence: >RC203854 protein sequence
 Red=Cloning site Green=Tags(s)

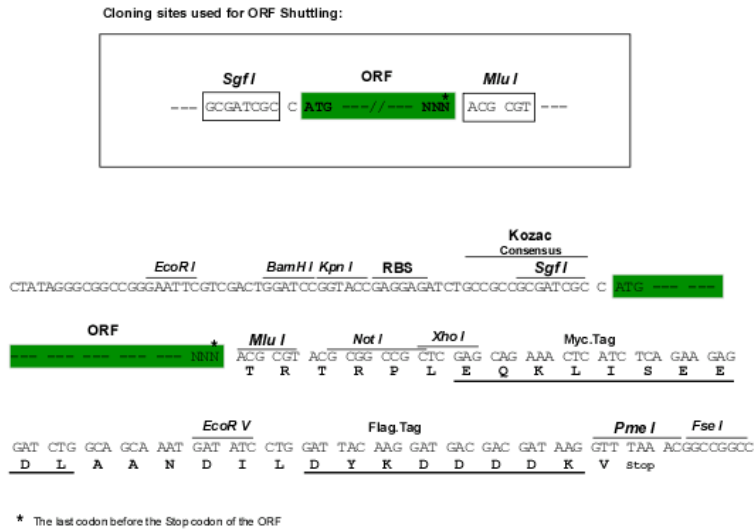
MTVDSSMSSGYCSLDEELEDCCFFAKTTFFRNAQSKHLSKNVCKPVEETQRPPTLQEIKQKIDSYNTREK
 NCLGMKLSDEGTYTGFIVHLKLRPVTVPAGIRPQSIYDAIKEVNLAATTDKRTSFYLPLDAIKQLHIS
 STTTVSEVIQGLLKKFMVVDNPQKFAFKRIHKDGOVL FQKLSIADRPLYRLLAGDPTEVLSFVLKENE
 TGEVEWDAFSIPELQNFLTILEKEEQDKIQVQKKYDKFRQKLEALRESQGKPG

TRTRPLEQKLISEEDLAANDILDYKDDDDKV

Chromatograms: https://cdn.origene.com/chromatograms/mk6344_b04.zip

Restriction Sites: SgfI-MluI

Cloning Scheme:



ACCN: NM_182665

ORF Size: 795 bp

OTI Disclaimer: The molecular sequence of this clone aligns with the gene accession number as a point of reference only. However, individual transcript sequences of the same gene can differ through naturally occurring variations (e.g. polymorphisms), each with its own valid existence. This clone is substantially in agreement with the reference, but a complete review of all prevailing variants is recommended prior to use. [More info](#)

OTI Annotation: This clone was engineered to express the complete ORF with an expression tag. Expression varies depending on the nature of the gene.

Components: The ORF clone is ion-exchange column purified and shipped in a 2D barcoded Matrix tube containing 10ug of transfection-ready, dried plasmid DNA (reconstitute with 100 ul of water).

Reconstitution Method:

1. Centrifuge at 5,000xg for 5min.
2. Carefully open the tube and add 100ul of sterile water to dissolve the DNA.
3. Close the tube and incubate for 10 minutes at room temperature.
4. Briefly vortex the tube and then do a quick spin (less than 5000xg) to concentrate the liquid at the bottom.
5. Store the suspended plasmid at -20°C. The DNA is stable for at least one year from date of shipping when stored at -20°C.

RefSeq: [NM_182665.4](#)

RefSeq Size: 3531 bp

RefSeq ORF: 798 bp

Locus ID: 83593

UniProt ID: [Q8WWW0](#)

Cytogenetics: 1q32.1

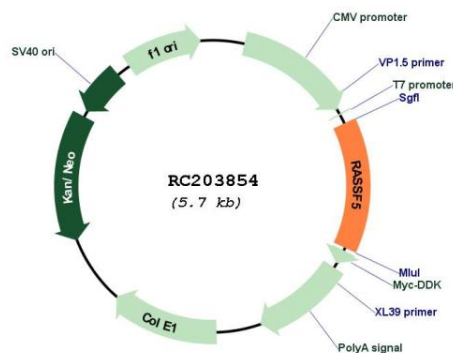
Protein Families: Druggable Genome

Protein Pathways: Leukocyte transendothelial migration, Non-small cell lung cancer, Pathways in cancer

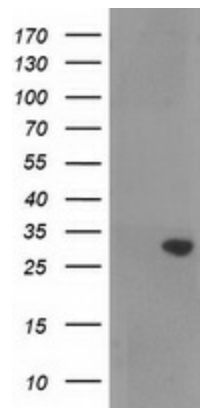
MW: 30.4 kDa

Gene Summary: This gene is a member of the Ras association domain family. It functions as a tumor suppressor, and is inactivated in a variety of cancers. The encoded protein localizes to centrosomes and microtubules, and associates with the GTP-activated forms of Ras, Rap1, and several other Ras-like small GTPases. The protein regulates lymphocyte adhesion and suppresses cell growth in response to activated Rap1 or Ras. Multiple transcript variants encoding different isoforms have been found for this gene. [provided by RefSeq, Jul 2008]

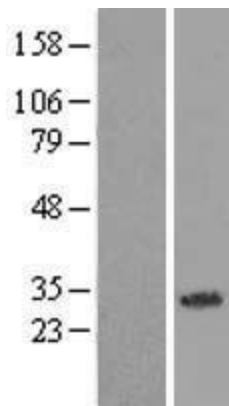
Product images:



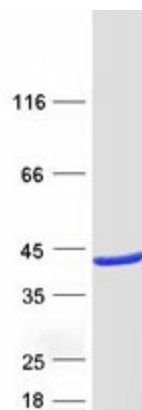
Circular map for RC203854



HEK293T cells were transfected with the pCMV6-ENTRY control (Cat# [PS100001], Left lane) or pCMV6-ENTRY RASSF5 (Cat# RC203854, Right lane) cDNA for 48 hrs and lysed. Equivalent amounts of cell lysates (5 ug per lane) were separated by SDS-PAGE and immunoblotted with anti-RASSF5 (Cat# [TA502509]). Positive lysates [LY405440] (100ug) and [LC405440] (20ug) can be purchased separately from OriGene.



Western blot validation of overexpression lysate (Cat# [LY405440]) using anti-DDK antibody (Cat# [TA50011-100]). Left: Cell lysates from untransfected HEK293T cells; Right: Cell lysates from HEK293T cells transfected with RC203854 using transfection reagent MegaTran 2.0 (Cat# [TT210002]).



Coomassie blue staining of purified RASSF5 protein (Cat# [TP303854]). The protein was produced from HEK293T cells transfected with RASSF5 cDNA clone (Cat# RC203854) using MegaTran 2.0 (Cat# [TT210002]).