

## Product datasheet for **RC203853**

### Spingomyelin Synthase 1 (SGMS1) (NM\_147156) Human Tagged ORF Clone

#### Product data:

Product Type:	Expression Plasmids
Product Name:	Spingomyelin Synthase 1 (SGMS1) (NM_147156) Human Tagged ORF Clone
Tag:	Myc-DDK
Symbol:	Spingomyelin Synthase 1
Synonyms:	hmob33; MOB; MOB1; SMS1; TMEM23
Mammalian Cell Selection:	Neomycin
Vector:	pCMV6-Entry (PS100001)
E. coli Selection:	Kanamycin (25 ug/mL)
ORF Nucleotide Sequence:	>RC203853 representing NM_147156 Red=Cloning site Blue=ORF Green=Tags(s)

TTTTGTAATACGACTCACTATAGGGCGGCCGGAATTCGTCGACTGGATCCGGTACCGAGGAGATCTGCC  
GCC**CGATCGCC**

ATGAAGGAAGTGGTTTATTGGTCACCCAAGAAGGTGGCAGACTGGCTGCTGGAGAATGCTATGCCAGAAT  
ACTGTGAGCCTCTGGAGCATTTACAGGCCAGGACTTGATCAACCTAACCCAAGAGGATTTCAAAAAACC  
CCCCTTGTCCGAGTCTCCTCTGACAACGGGCAGCGGCTCCTGGACATGATAGAAACCTGAAAAATGGAG  
CACCATTTGGAAGCACACAAGAACGGCCATGCCAATGGGCACCTCAACATTGGCGTAGACATCCCCACCC  
CCGACGGCAGCTTCAGCATCAAGATTAACCCAACGGGATGCCAATGGGTATAGGAAAGAGATGATAAA  
GATCCCCATGCCAGAACTGGAGCGCTCTCAGTACCCCATGGAGTGGGGCAAGACTTTTCTGGCCTTCTT  
TATGCACTTTCTGTTTCTGTTCTCACCACAGTGATGATCTCGGTGCTCCACGAACGAGTACCTCCTAAGG  
AGGTGCAGCCTCCACTACCGGACACATTTTTGACCATTTAACCGGGTGCAGTGGGCCTTTTCTATTTG  
TGAAATTAATGGCATGATCCTTGTAGGACTCTGGTTAATTCAGTGGCTGCTCTTAAAAACAAGTCTATT  
ATTAGCAGAAGATTTTTCTGCATAGTTGGCAGCGTGTACCTGTATCGGTGATTACAATGTATGTAAC  
CACTCCCAGTACCTGGTATGCATTTCAACTGTTCTCCGAAGCTTTTCGGAGACTGGGAAGCCCAACTGCG  
AAGAATAATGAAGCTCATTGCTGGAGGTGGCTTGTCTATCACTGGCTCTCACAACATGTGTGGGACTAT  
CTGTACAGCGGCCACACGGTCACTAACACTTACCTACTTATTTATCAAAGAGTATCCCCTCGGCGAC  
TCTGGTGGTATCACTGGATTTGCTGGCTTCTCAGCGTAGTTGGAATCTTCTGTATTCTTAGCGCATGA  
CCACTACACTGTGGACGTGGTGGTGGCATATTACATCACCACGAGACTCTTCTGGTGGTATCACACTATG  
GCCAATCAGCAAGTGCTAAAGGAAGCTTCCAGATGAACCTCCTGGCCAGGGTGTGGTGGTACAGGCCAT  
TTCAGTACTTTGAAAAGAATGTCCAAGGAATTGTACCTCGATCTTACCATTGGCCTTTCCCTGGCCAGT  
AGTCCACCTCAGTAGGCAAGTTAAATACAGCCGGCTGGTGAATGACACA

**ACGGT**ACGCGGCCGCTCGAGCAGAACTCATCTCAGAAGAGGATCTGGCAGCAATGATATCCTGGATT  
ACAAGGATGACGACGATAAGGTTTAA



[View online »](#)

**Protein Sequence:** >RC203853 representing NM\_147156  
Red=Cloning site Green=Tags(s)

MKEVVYWSPKKVADWLLNAMPEYCEPLEHFTGQDLINLTQEDFKKPLCRVSSDNGQRLLDMIETLKME  
 HHLEAHKNGHANGHLNIGVDIPTDGSFSIKIKPNGMPNGYRKEMIKIPPELERSQYPMEWGKTFLAFL  
 YALSCFVLTVMISVVHERVPPKEVQPPLPDTFFDHFNRVQWAFSICEINGMILVGLWLIQWLLKYSI  
 ISRRFFCIVGTLYLRCITMYVTTLPVPGMHFNCSPKLFGDWEAQLRRIMKLIAGGGLSITGSHNMCGDY  
 LYSGHTVMLTLTYLFIKEYSPRRLWYHWICWLLSVVGIFCILLAHDHYTVDVVVAYYITTRLFWWYHTM  
 ANQVVLKEASQMNLLARVWYRPFQYFEKNVQGI VPRS YHWPFPWPVVHLSRQVKYSRLVNDT

TRTRPLEQKLISEEDLAANDILDYKDDDDKV

**Chromatograms:** [https://cdn.origene.com/chromatograms/mg4120\\_c06.zip](https://cdn.origene.com/chromatograms/mg4120_c06.zip)

**Restriction Sites:** SgfI-MluI

**Cloning Scheme:**



\* The last codon before the Stop codon of the ORF

**ACCN:** NM\_147156

**ORF Size:** 1239 bp

**OTI Disclaimer:** The molecular sequence of this clone aligns with the gene accession number as a point of reference only. However, individual transcript sequences of the same gene can differ through naturally occurring variations (e.g. polymorphisms), each with its own valid existence. This clone is substantially in agreement with the reference, but a complete review of all prevailing variants is recommended prior to use. [More info](#)

**OTI Annotation:** This clone was engineered to express the complete ORF with an expression tag. Expression varies depending on the nature of the gene.

**Components:** The ORF clone is ion-exchange column purified and shipped in a 2D barcoded Matrix tube containing 10ug of transfection-ready, dried plasmid DNA (reconstitute with 100 ul of water).

**Reconstitution Method:**

1. Centrifuge at 5,000xg for 5min.
2. Carefully open the tube and add 100ul of sterile water to dissolve the DNA.
3. Close the tube and incubate for 10 minutes at room temperature.
4. Briefly vortex the tube and then do a quick spin (less than 5000xg) to concentrate the liquid at the bottom.
5. Store the suspended plasmid at -20°C. The DNA is stable for at least one year from date of shipping when stored at -20°C.

**RefSeq:** [NM\\_147156.2](#)

**RefSeq Size:** 3767 bp

**RefSeq ORF:** 1242 bp

**Locus ID:** 259230

**UniProt ID:** [Q86VZ5](#)

**Cytogenetics:** 10q11.23

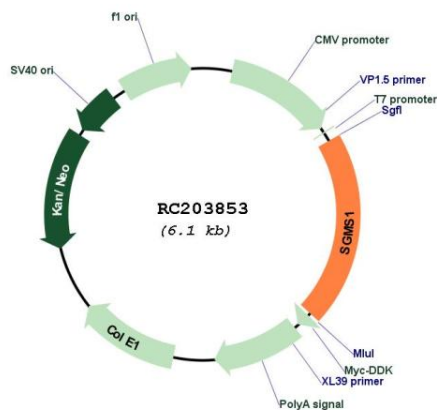
**Protein Families:** Transmembrane

**Protein Pathways:** Metabolic pathways, Spingolipid metabolism

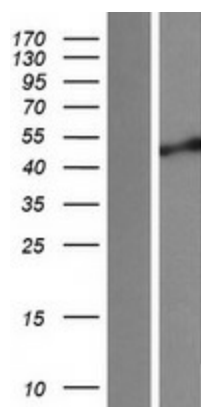
**MW:** 48.4 kDa

**Gene Summary:** The protein encoded by this gene is predicted to be a five-pass transmembrane protein. This gene may be predominately expressed in brain. [provided by RefSeq, Jul 2008]

### Product images:



Circular map for RC203853



Western blot validation of overexpression lysate (Cat# [LY407819]) using anti-DDK antibody (Cat# [TA50011-100]). Left: Cell lysates from untransfected HEK293T cells; Right: Cell lysates from HEK293T cells transfected with RC203853 using transfection reagent MegaTran 2.0 (Cat# [TT210002]).