

Product datasheet for **RC203851**

RSPRY1 (NM_133368) Human Tagged ORF Clone

Product data:

Product Type:	Expression Plasmids
Product Name:	RSPRY1 (NM_133368) Human Tagged ORF Clone
Tag:	Myc-DDK
Symbol:	RSPRY1
Synonyms:	SEMDFA
Mammalian Cell Selection:	Neomycin
Vector:	pCMV6-Entry (PS100001)
E. coli Selection:	Kanamycin (25 ug/mL)



[View online »](#)

ORF Nucleotide Sequence:

>RC203851 ORF sequence
 Red=Cloning site Blue=ORF Green=Tags(s)

TTTTGTAATACGACTCACTATAGGGCGGCCGGGAATTCGTCGACTGGATCCGGTACCGAGGAGATCTGCC
 GCC**CGGATCGCC**

ATGATCGTCTTTGGTTGGCCGTGTTCTTAGCGAGCAGAAGCCTTGCCAGGGTCTGTTGTTGACTCTCG
 AAGAGCACATAGCCCACTTCTAGGACTGGAGGTGCCGCTACTACCATGGGTAATTCCTGTATCTGCCG
 AGATGACAGTGGAACAGATGACAGTGTGACACCCAACAGCAACAGGCCGAGAACAGTGCAGTACCCACT
 GCTGACACAAGGAGCCAACCACGGGACCCTGTTGCGCCACCAAGGAGGGGCCGAGGACCTCATGAGCCAA
 GGAGAAAGAAAATAAATGTGGATGGGCTAGTGTGGACACACTGGCAGTAATACGGACTCTGTAGATAA
 TGATCAGGAACCTCCCTATTCAATGATAACATTACAGAAATGGCAGAAACAGATGAAGGATGGTTGGAT
 GTTGTCCAGTCTTAATTAGAGTTATCCACTGGAAGATCCACTGGGACCAGCTGTATAACATTGTTAC
 TAGATGAATGTCCATTGCCCACTAAAGATGCACCTCCAGAAATGACTGAAATTCCAATTTAAATGGAGA
 AGTAGCTTGCCAGGACTCAAGCCATCTGCCAAACACAGGAACACATCTGCAGTCTAGGCTGCTTGCC
 GAGAAACTAGCAGGTCTGCAAGTATAGGTTTACTTAGCCAGGAATACTGGAATACTTGCTACAGTGTC
 TGAAGTTACAGTCCCACCCACAGTCATGCTTTTTGCACTTATCGCACTGAAAAAGTTTGACAGACAAG
 TGAATAAAATGACTATTTCTGAATCCAGTATTAGTGACCGGCTTGTCACATTGGAGTCTGGGCTAAT
 GATCCTGATTATCTGAAACGTCAAGTTGGTTTCTGTGCCAGTGGAGCTTAGACAATCTCTTTTAAAG
 AAGGTAGACAGCTGACCTATGAGAAAGTGAAGTGGAGTACATTAGGGCCATGCTGAATAGCAATGATGT
 CAGCGAGTACCTGAAGATCTCACCTCATGGCTTAGAGGCTCGCTGTGATGCCTCCTCTTTGAAAGTGTG
 CGTTGCACCTTTTGTGTGGATGCCGGGTATGGTACTATGAAGTAACAGTGGTCACTCTGGCGTCATGC
 AGATTGGCTGGCCACTCGAGACAGCAAATTCCTCAATCATGAAGGCTACGGCATTGGGGATGATGAATA
 CTCTGTGCGTATGATGGCTGCCGGCAGCTGATTTGGTACAATGCCAGAAGTAAGCCTCACATACACCCA
 TGCTGAAAGAAGGAGATACAGTAGGATTTCTGTTAGACTTGAATGAAAAGCAAATGATCTCTTTTTAA
 ATGGCAACCAGCTGCCTCCTGAAAAGCAAGTCTTTTCTACTGTATCTGGATTTTTGCTGCAGCTAG
 TTTTCATGTCATATCAACAATGTGAGTTCATTTTGGAGCAAAACCATTCAATACCCACCATCTATGAAA
 TTTAGCACTTTTAAATGACTACGCCTTCTAACAGCTGAAGAAAAAATCATTTTGGCAAGGCACAGGCGTC
 TTGCTCTGTTGAAGCAAGTCAGTATCCGAGAAAAGTCTGTTCCCTTTGTTGTGATGAGGTAGCAGACAC
 ACAATTGAAGCCATGTGGACACAGTACCTGTGCATGGATTGTGCCTTGCAGCTGGAGACCTGCCATTG
 TGTCGTAAGAAATAGTATCTAGAATCAGACAGATTTCTCATATTCA

ACGCGTACGCGGCCGCTCGAGCAGAAACTCATCTCAGAAGAGGATCTGGCAGCAAATGATATCCTGGATT
 ACAAGGATGACGACGATAAGGTTTAA

Protein Sequence:

>RC203851 protein sequence
 Red=Cloning site Green=Tags(s)

MIVFGWAVFLASRSLGQGLLLTLEEHIAHFLGTGGAATTMGNVICRDDSGTDDSVDTQQQQAENSAVPT
 ADTRSQPRDPVRRPGRGPHERRKQNVLDGLVLDLAVIRTLVDNDQEPYSMITLHEMAETDEGLWD
 VVQSLIRVIPLDPLGPAVITLLLDECLPTKDALKL TEILNLNGEVACQDSSHPAKHRNTSAVLGCLA
 EKLAGPASIGLLSPGILEYLLQCLKLSHPTVMLFALIALEKFAQTSENKLTISESSISDRLVTLESWAN
 DPDYLKRQVGFCAQWLDNLFLEKGRQLTYEKVNLSSIRAMLNSNDVSEYLKISPHGLEARCDASSFESV
 RCTFCVDAGVWYEVTVVTSGVMQIGWATRDSKFLNHEGYGIGDDEYSCAYDGCRLIWINARSKPHIHP
 CWKEGDTVGFLLDLNEKQMIFFLNGNQLPPEKQVFSSTVSGFFAAASFMSYQQCEFNFGAKPFKYPSPMK
 FSTFNDYAFLLAEKIIILPRHRLALLKQVSIRENCCSLCCDEVADTQLKPCGHS DLCMDCALQLETCP
 CRKEIVSRIRQISHIS

TRTRPLEQKLISEEDLAANDILDYKDDDDKV

Chromatograms:

https://cdn.origene.com/chromatograms/mk6538_e01.zip

Restriction Sites:

Sgfl-Mlul

Cloning Scheme:


ACCN: NM_133368

ORF Size: 1728 bp

OTI Disclaimer: The molecular sequence of this clone aligns with the gene accession number as a point of reference only. However, individual transcript sequences of the same gene can differ through naturally occurring variations (e.g. polymorphisms), each with its own valid existence. This clone is substantially in agreement with the reference, but a complete review of all prevailing variants is recommended prior to use. [More info](#)

OTI Annotation: This clone was engineered to express the complete ORF with an expression tag. Expression varies depending on the nature of the gene.

Components: The ORF clone is ion-exchange column purified and shipped in a 2D barcoded Matrix tube containing 10ug of transfection-ready, dried plasmid DNA (reconstitute with 100 ul of water).

- Reconstitution Method:**
1. Centrifuge at 5,000xg for 5min.
 2. Carefully open the tube and add 100ul of sterile water to dissolve the DNA.
 3. Close the tube and incubate for 10 minutes at room temperature.
 4. Briefly vortex the tube and then do a quick spin (less than 5000xg) to concentrate the liquid at the bottom.
 5. Store the suspended plasmid at -20°C. The DNA is stable for at least one year from date of shipping when stored at -20°C.

RefSeq: [NM_133368.3](#)

RefSeq Size: 2084 bp

RefSeq ORF: 1731 bp

Locus ID: 89970

UniProt ID: [Q96DX4](#)

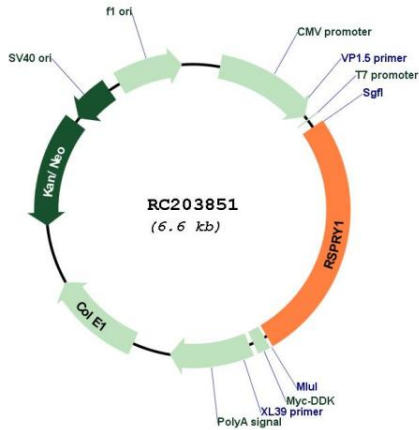
Cytogenetics: 16q13

Protein Families: Druggable Genome, Secreted Protein

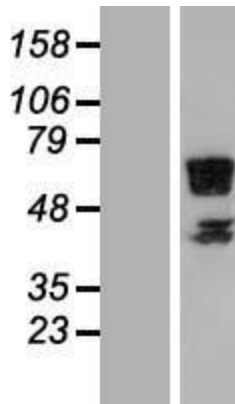
MW: 64.2 kDa

Gene Summary: This gene encodes a glycoprotein that contains a RING-type zinc finger domain and an SPRY domain of unknown function. Alternative splicing of this gene results in multiple transcript variants. [provided by RefSeq, Feb 2015]

Product images:



Circular map for RC203851



Western blot validation of overexpression lysate (Cat# [LY408831]) using anti-DDK antibody (Cat# [TA50011-100]). Left: Cell lysates from untransfected HEK293T cells; Right: Cell lysates from HEK293T cells transfected with RC203851 using transfection reagent MegaTran 2.0 (Cat# [TT210002]).