

Product datasheet for **RC203844**

BORCS5 (NM_058169) Human Tagged ORF Clone

Product data:

Product Type: Expression Plasmids
Product Name: BORCS5 (NM_058169) Human Tagged ORF Clone
Tag: Myc-DDK
Symbol: BORCS5
Synonyms: LOH1CR12; LOH12CR1
Vector: pCMV6-Entry (PS100001)
E. coli Selection: Kanamycin (25 ug/mL)
Cell Selection: Neomycin
ORF Nucleotide Sequence: >RC203844 ORF sequence
Red=Cloning site Blue=ORF Green=Tags(s)

TTTTGTAATACGACTCACTATAGGGCGCCGGGAATTCGTCGACTGGATCCGGTACCGAGGAGATCTGCC
GCC**CGATCGCC**

ATGGGCAGTGAGCAGAGCTCCGAGGCCGAGAGCCGACCAACGATCTGAACCTCTCAGTACTCCTTCAC
CAGCCAAGCATAGAGCCAAGATGGATGATATTGTGTTGTAGCTCAGGGCTCCAGGCCTCAGGAAAGCT
CAGCAACGATCCCGATGTCATCAAGTTGCAAGAGATTCCAACCTCCAGCCCCTTTTGAAGGGCTATTG
AGTGGCCAGACTTCCCAACAAATGCCAAATTGGAGAACTGGACTCTCAGCAGGTGTTGCAGCTCTGCC
TCCGATATCAAGATCACCTGCATCAGTGTGCAGAGGCCGTTGCTTTTGACCAGAATGCTTTGGTTAAACG
AATCAAAGAGATGGATCTGTCTGTAGAACTCTGTTTCAGTTCATGCAGGAGCGCCAGAAAAGATACGCC
AAGTATGCCGAGCAGATCCAGAAAGTGAACGAGATGTCCGCCATCCTCCGCCGCATACAGATGGGCATCG
ACCAGACTGTGCCCTGCTGGACAGGCTCAACAGCATGCTGCCCGAGGGCGAGCGGCTGGAGCCCTTCAG
CATGAAGCCCGACCGGAGCTCAGGCTG

ACGCGTACGCGGCCGCTCGAGCAGAACTCATCTCAGAAGAGGATCTGGCAGCAAATGATATCCTGGATT
ACAAGGATGACGACGATAAGGTTTAA

Protein Sequence: >RC203844 protein sequence
Red=Cloning site Green=Tags(s)

MGSEQSSEAESRPNDLNSVTPSPAKHRAKMDDIVVVAQGSQASRNVSNPDVVIKLEIPTFQPLLKGLL
SGQTSPNACLEKLDLSDQQVLQLCLRYQDHLHQCAEAVAFDQNALVKRIKEMDLVETLFSFMQERQKRYA
KYAEQIQKVNEMSAILRRIQMGIQDQTVPLLDRLNSMLPEGERLEPF SMKPDRELRL

TRTRPLEQKLISEEDLAANDILDYKDDDDKV

Chromatograms: https://cdn.origene.com/chromatograms/mk6306_a06.zip



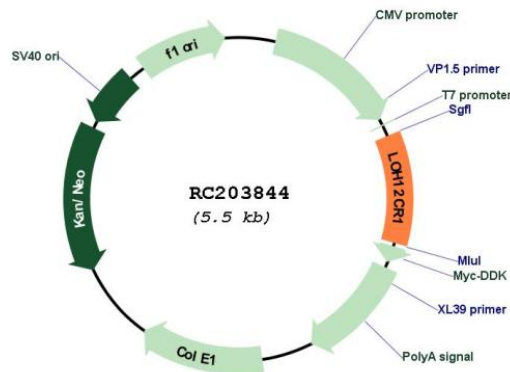
[View online »](#)

Restriction Sites: SgfI-MluI

Cloning Scheme:



Plasmid Map:



ACCN: NM_058169

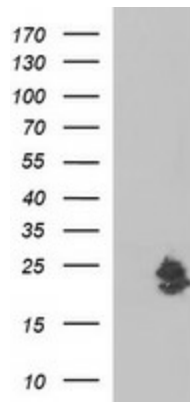
ORF Size: 588 bp

OTI Disclaimer: The molecular sequence of this clone aligns with the gene accession number as a point of reference only. However, individual transcript sequences of the same gene can differ through naturally occurring variations (e.g. polymorphisms), each with its own valid existence. This clone is substantially in agreement with the reference, but a complete review of all prevailing variants is recommended prior to use. [More info](#)

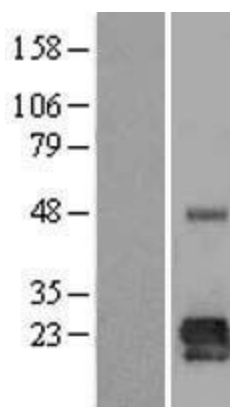
OTI Annotation: This clone was engineered to express the complete ORF with an expression tag. Expression varies depending on the nature of the gene.

Components:	The ORF clone is ion-exchange column purified and shipped in a 2D barcoded Matrix tube containing 10ug of transfection-ready, dried plasmid DNA (reconstitute with 100 ul of water).
Reconstitution Method:	<ol style="list-style-type: none">1. Centrifuge at 5,000xg for 5min.2. Carefully open the tube and add 100ul of sterile water to dissolve the DNA.3. Close the tube and incubate for 10 minutes at room temperature.4. Briefly vortex the tube and then do a quick spin (less than 5000xg) to concentrate the liquid at the bottom.5. Store the suspended plasmid at -20°C. The DNA is stable for at least one year from date of shipping when stored at -20°C.
RefSeq:	NM_058169.6
RefSeq Size:	2092 bp
RefSeq ORF:	591 bp
Locus ID:	118426
UniProt ID:	Q969J3
Cytogenetics:	12p13.2
MW:	22.2 kDa
Gene Summary:	As part of the BORC complex may play a role in lysosomes movement and localization at the cell periphery. Associated with the cytosolic face of lysosomes, the BORC complex may recruit ARL8B and couple lysosomes to microtubule plus-end-directed kinesin motor. Thereby, it may indirectly play a role in cell spreading and motility.[UniProtKB/Swiss-Prot Function]

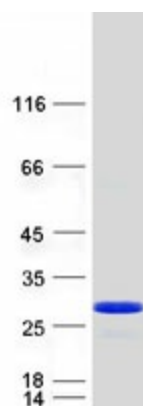
Product images:



HEK293T cells were transfected with the pCMV6-ENTRY control (Cat# [PS100001], Left lane) or pCMV6-ENTRY LOH12CR1 (Cat# RC203844, Right lane) cDNA for 48 hrs and lysed. Equivalent amounts of cell lysates (5 ug per lane) were separated by SDS-PAGE and immunoblotted with anti-LOH12CR1(Cat# [TA507004]). Positive lysates [LY409223] (100ug) and [LC409223] (20ug) can be purchased separately from OriGene.



Western blot validation of overexpression lysate (Cat# [LY409223]) using anti-DDK antibody (Cat# [TA50011-100]). Left: Cell lysates from un-transfected HEK293T cells; Right: Cell lysates from HEK293T cells transfected with RC203844 using transfection reagent MegaTran 2.0 (Cat# [TT210002]).



Coomassie blue staining of purified BORCS5 protein (Cat# [TP303844]). The protein was produced from HEK293T cells transfected with BORCS5 cDNA clone (Cat# RC203844) using MegaTran 2.0 (Cat# [TT210002]).