

Product datasheet for **RC203838**

METTL7B (NM_152637) Human Tagged ORF Clone

Product data:

Product Type: Expression Plasmids
Product Name: METTL7B (NM_152637) Human Tagged ORF Clone
Tag: Myc-DDK
Symbol: METTL7B
Synonyms: ALDI
Mammalian Cell Selection: Neomycin
Vector: pCMV6-Entry (PS100001)
E. coli Selection: Kanamycin (25 ug/mL)
ORF Nucleotide Sequence: >RC203838 representing NM_152637
Red=Cloning site Blue=ORF Green=Tags(s)

TTTTGTAATACGACTCACTATAGGGCGCCGGGAATTCGTCGACTGGATCCGGTACCGAGGAGATCTGCC
GCC**CGATCGCC**

ATGGACATCCTGGTCCCCTCCTGCAGCTGCTGGTGTGCTTCTTACCCTGCCCTGCACCTCATGGCTC
TGCTGGGCTGCTGGCAGCCCTGTGCAAAGCTACTTCCCCTACCTGATGGCCGTGCTGACTCCCAAGAG
CAACCGCAAGATGGAGAGCAAGAAACGGGAGCTCTTCAGCCAGATAAAGGGGCTTACAGGAGCCTCCGGG
AAAGTGGCCTACTGGAGCTGGGCTGCGGAACCGGAGCCAACCTTTCAGTTCTACCCACGGGCTGCAGGG
TCACCTGCCTAGACCCAAATCCCCTTTGAGAAGTTCCTGACAAAGAGCATGGCTGAGAACAGGCACCT
CCAATATGAGCGGTTTGTGGTGGCTCCTGGAGAGGACATGAGACAGCTGGCTGATGGCTCCATGGATGTG
GTGGTCTGCACTCTGGTCTGTGCTCTGTGCAGAGCCCAAGGAAGTCTGCAGGAGGTCGGAGAGTAC
TGAGACCGGGAGGTGTGCTCTTTTTCTGGGAGCATGTGGCAGAACCATATGGAAGCTGGCCCTTCATGTG
GCAGCAAGTTTTCGAGCCACCTGGAAACACATTGGGGATGGCTGCTGCCTCACCAGAGAGACCTGGAAG
GATCTTGAGAACGCCAGTTCTCCGAAATCCAAATGGAACGACAGCCCCCTCCCTTGAAGTGCTACCTG
TTGGGCCCCACATCATGGGAAAGGCTGTCAA

ACGCGTACGCGGCCGCTCGAGCAGAACTCATCTCAGAAGAGGATCTGGCAGCAAATGATATCCTGGATT
ACAAGGATGACGACGATAAGGTTTAA



[View online »](#)

Protein Sequence: >RC203838 representing NM_152637
Red=Cloning site Green=Tags(s)

MDILVPLLQLLVLLLTPLPLHMLLGCWQPLCKSYFPYLMAVLTPKSNRKMESKKRELFSSQIKGLTGASG
 KVALLELGCGTGANFQFYPPGCRVTCLDPNPHFEKFLTKSMAENRHLQYERFVVAPGEDMRQLADGSM DV
 VVCTLVLCVSPRKVLQEVRRVLRPGGVLFWEHVAEPYGSWAFMWQVFEPTWKHIGDGCCLTRETWK
 DLENAQFSEIQMERQPPPLKWLVPVPHIMGKAVK

TRTRPLEQKLISEEDLAANDILDYKDDDDKV

Chromatograms: https://cdn.origene.com/chromatograms/mk8112_g02.zip

Restriction Sites: SgfI-MluI

Cloning Scheme:

Cloning sites used for ORF Shuttling:



* The last codon before the Stop codon of the ORF

ACCN: NM_152637

ORF Size: 732 bp

OTI Disclaimer: The molecular sequence of this clone aligns with the gene accession number as a point of reference only. However, individual transcript sequences of the same gene can differ through naturally occurring variations (e.g. polymorphisms), each with its own valid existence. This clone is substantially in agreement with the reference, but a complete review of all prevailing variants is recommended prior to use. [More info](#)

OTI Annotation: This clone was engineered to express the complete ORF with an expression tag. Expression varies depending on the nature of the gene.

Components: The ORF clone is ion-exchange column purified and shipped in a 2D barcoded Matrix tube containing 10ug of transfection-ready, dried plasmid DNA (reconstitute with 100 ul of water).

Reconstitution Method:

1. Centrifuge at 5,000xg for 5min.
2. Carefully open the tube and add 100ul of sterile water to dissolve the DNA.
3. Close the tube and incubate for 10 minutes at room temperature.
4. Briefly vortex the tube and then do a quick spin (less than 5000xg) to concentrate the liquid at the bottom.
5. Store the suspended plasmid at -20°C. The DNA is stable for at least one year from date of shipping when stored at -20°C.

Note: Plasmids are not sterile. For experiments where strict sterility is required, filtration with 0.22um filter is required.

RefSeq: [NM_152637.3](#)

RefSeq Size: 1531 bp

RefSeq ORF: 735 bp

Locus ID: 196410

UniProt ID: [Q6UX53](#)

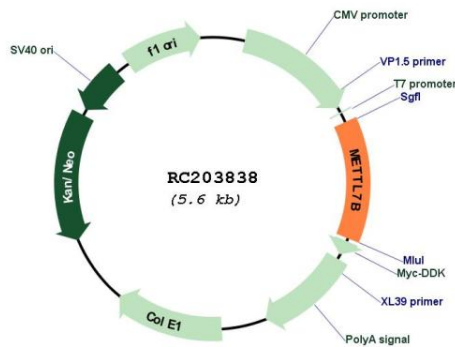
Cytogenetics: 12q13.2

Protein Families: Druggable Genome, Transmembrane

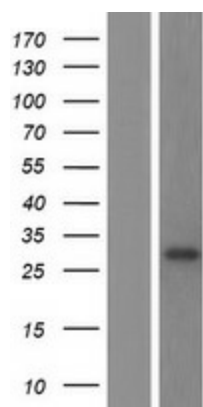
MW: 27.6 kDa

Gene Summary: Probable methyltransferase.[UniProtKB/Swiss-Prot Function]

Product images:



Circular map for RC203838



Western blot validation of overexpression lysate (Cat# [LY407368]) using anti-DDK antibody (Cat# [TA50011-100]). Left: Cell lysates from untransfected HEK293T cells; Right: Cell lysates from HEK293T cells transfected with RC203838 using transfection reagent MegaTran 2.0 (Cat# [TT210002]).