

Product datasheet for **RC203834**

RRAGC (NM_022157) Human Tagged ORF Clone

Product data:

Product Type:	Expression Plasmids
Product Name:	RRAGC (NM_022157) Human Tagged ORF Clone
Tag:	Myc-DDK
Symbol:	RRAGC
Synonyms:	GTR2; RAGC; TIB929
Mammalian Cell Selection:	Neomycin
Vector:	pCMV6-Entry (PS100001)
E. coli Selection:	Kanamycin (25 ug/mL)
ORF Nucleotide Sequence:	>RC203834 ORF sequence Red=Cloning site Blue=ORF Green=Tags(s)

TTTTGTAATACGACTCACTATAGGGCGGCCGGAATTCGTCGACTGGATCCGGTACCGAGGAGATCTGCC
GCC**CGATCGCC**

ATGTCCTGCAGTACGGGGCGGAGGAGACGCCCTCGCCGGCAGTTACGGCGGGCCGATTCTGTTTCAA
AGGACTTCGGCTACGGCGTGGAGGAGGAGGAAGAGGAGGCGGGCGGGCGGGAGGGTTGGGGCAGG
GGCAGGGCGTGGCTGTGGTCCGGGGGGCGCTGACAGCTCAAGCCGAGGATTCTGCTCATGGACTCCG
CGCAGCGCAAGTCTCCATCCAGAAGGTGGTGTTCATAAGATGCACCCAACGAGACCCTCTTTTTGG
AAAGTACCAACAAGATTTATAAGGATGACATTTCCAATAGCTCCTTTGTGAATTTCCAGATATGGGATTT
TCCTGGGCAAATGGACTTTTTGACCCAACCTTTGACTATGAGATGATCTTCAGGGGAACAGGAGCATTG
ATATACGTCATTGACGCACAGGATGACTACATGGAGGCTTTAACAAGACTTCACATTACTGTTTCTAAAG
CCTACAAAGTTAACCAGACATGAATTTGAGGTTTTTATTACAAAAGTTGATGGTCTGTCTGATGATCA
CAAAATAGAAACACAGAGGGACATTCATAAAGGGCCAATGATGACCTTGACAGATGCTGGGCTAGAAAA
CTCCATCTTAGCTTTTATCTGACTAGTATCTATGACCATTCAATATTTGAAGCCTTTAGTAAAGTGGTGC
AGAACTCATTCCACAACCTGCCGACCTTGAAAACTATTAATATCTTTATATCAAATTCAGGTATTGA
AAAAGCTTTTCTTTGATGTTGTCAGCAAAATCTACATTGCAACAGACAGTCCCCTGTGGATATGCAA
TCTTATGAACCTTGTGTGACATGATCGATGTTGTAATTGATGTCTTGTATATATGGTTAAAGGAAG
ATGGAAGTGAAGTGCTTATGACAAAGAATCTATGGCAATTATCAAGCTGAATAATACTGTCCTTTA
TTTAAAGGAGGTGACTAAATTTTTGGCACTGGTCTGCATTCTAAGGGAAGAAAGCTTTGAAAGAAAAGGT
TTAATAGACTACAACCTTCCACTGTTCCGAAAAGCTATTCATGAGGTTTTGAGGTGGTGTGACTTCTC
ACAGGAGCTGTGGTACCAGACTAGTGCCTCCAGTCTGAAAGCGCTGACACAAATGGCACGCCACGAAA
CGCCATC

ACGGTACGGGGCGCTCGAGCAGAACTCATCTCAGAAGAGGATCTGGCAGCAAATGATATCTGGATT
ACAAGGATGACGACGATAAGGTTTAA



Protein Sequence: >RC203834 protein sequence
Red=Cloning site Green=Tags(s)

MSLQYGAETPLAGSYGAADSPKDFGYGVEEEEEAAAAAGGGVAGAGGGCGPGGADSSKPRILLMGLR
 RSGKSSIQKVVVHKMSPNETLFLESTNKIYKDDISNSSFVNFQIWDFFPGQMDFFDPTFDYEMIFRGTGAL
 IYVIDAQDDYMEALTRLHITVSKAYKVNPD MNFEVFIHKVDGLSDDHKIETQRDIHQRANDDLADAGLEK
 LHLSFYLTISIYDHSIFEAFSKVVQKLIPLQPTLENLLNIFISNSGIEKAFLEFDVVSKIYIATDSSPVDMQ
 SYELCCDMIDVVIDVSCIYGLKEDGSGSAYDKESMAIIKLNNTTVLYLKEVTKFLALVCILREESFERKGL
 LIDYNFHCFRKAIHEVFEVGVTSHRSCGHQTSASSLKALTHNGTPRNAI

TRTRPLEQKLISEEDLAANDILDYKDDDDKLV

Chromatograms: https://cdn.origene.com/chromatograms/mk6538_c11.zip

Restriction Sites: SgfI-MluI

Cloning Scheme:



ACCN: NM_022157

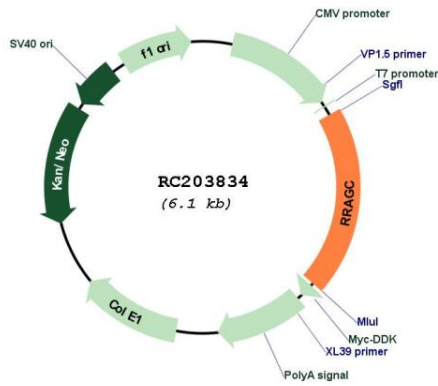
ORF Size: 1197 bp

OTI Disclaimer: Due to the inherent nature of this plasmid, standard methods to replicate additional amounts of DNA in *E. coli* are highly likely to result in mutations and/or rearrangements. Therefore, OriGene does not guarantee the capability to replicate this plasmid DNA. Additional amounts of DNA can be purchased from OriGene with batch-specific, full-sequence verification at a reduced cost. Please contact our customer care team at custsupport@origene.com or by calling 301.340.3188 option 3 for pricing and delivery.

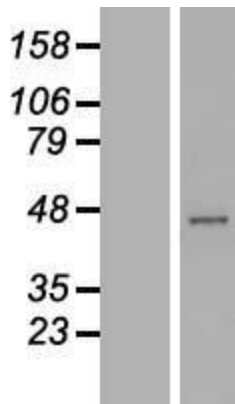
The molecular sequence of this clone aligns with the gene accession number as a point of reference only. However, individual transcript sequences of the same gene can differ through naturally occurring variations (e.g. polymorphisms), each with its own valid existence. This clone is substantially in agreement with the reference, but a complete review of all prevailing variants is recommended prior to use. [More info](#)

OTI Annotation:	This clone was engineered to express the complete ORF with an expression tag. Expression varies depending on the nature of the gene.
Components:	The ORF clone is ion-exchange column purified and shipped in a 2D barcoded Matrix tube containing 10ug of transfection-ready, dried plasmid DNA (reconstitute with 100 ul of water).
Reconstitution Method:	<ol style="list-style-type: none">1. Centrifuge at 5,000xg for 5min.2. Carefully open the tube and add 100ul of sterile water to dissolve the DNA.3. Close the tube and incubate for 10 minutes at room temperature.4. Briefly vortex the tube and then do a quick spin (less than 5000xg) to concentrate the liquid at the bottom.5. Store the suspended plasmid at -20°C. The DNA is stable for at least one year from date of shipping when stored at -20°C.
RefSeq:	NM_022157.4
RefSeq Size:	2746 bp
RefSeq ORF:	1200 bp
Locus ID:	64121
UniProt ID:	Q9HB90
Cytogenetics:	1p34.3
Domains:	Gtr1_RagA
Protein Families:	Transcription Factors
MW:	44.2 kDa
Gene Summary:	This gene encodes a member of the GTR/RAG GTP-binding protein family. The encoded protein is a monomeric guanine nucleotide-binding protein which forms a heterodimer with RRAGA and RRAGB and is primarily localized to the cytoplasm. The encoded protein promotes intracellular localization of the mTOR complex. Alternative splicing results in multiple transcript variants. [provided by RefSeq, Dec 2012]

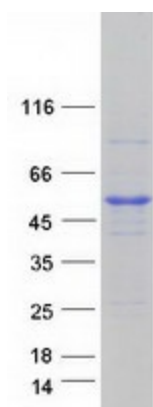
Product images:



Circular map for RC203834



Western blot validation of overexpression lysate (Cat# [LY411734]) using anti-DDK antibody (Cat# [TA50011-100]). Left: Cell lysates from untransfected HEK293T cells; Right: Cell lysates from HEK293T cells transfected with RC203834 using transfection reagent MegaTran 2.0 (Cat# [TT210002]).



Coomassie blue staining of purified RRAGC protein (Cat# [TP303834]). The protein was produced from HEK293T cells transfected with RRAGC cDNA clone (Cat# RC203834) using MegaTran 2.0 (Cat# [TT210002]).