

Product datasheet for **RC203833**

Matrilin 2 (MATN2) (NM_030583) Human Tagged ORF Clone

Product data:

Product Type:	Expression Plasmids
Product Name:	Matrilin 2 (MATN2) (NM_030583) Human Tagged ORF Clone
Tag:	Myc-DDK
Symbol:	Matrilin 2
Mammalian Cell Selection:	Neomycin
Vector:	pCMV6-Entry (PS100001)
E. coli Selection:	Kanamycin (25 ug/mL)



[View online »](#)

ORF Nucleotide Sequence:

>RC203833 ORF sequence
 Red=Cloning site Blue=ORF Green=Tags(s)

TTTTGTAATACGACTCACTATAGGGCGGCCGGAATTCGTCGACTGGATCCGGTACCGAGGAGATCTGCC
 GCC**CGGATCGCC**

ATGGAAAAGATGCTCGCAGGCTGCTTTCTGCTGATCCTCGGACAGATCGTCTCCTCCCTGCCGAGGCCA
 GGGAGCGGTACAGTGGGAGGTCCATCTCTAGGGCAGACACGCTCGGACCCACCCGAGACGGCCCTTCT
 GGAGAGTTCCTGTGAGAACAAAGCGGGCAGACCTGGTTTTTCATCATTGACAGCTCTCGCAGTGTCAACACC
 CATGACTATGCAAAGGTCAAGGAGTTCATCGTGGACATCTTGCAATTCTTGGACATTGGTCTGATGTCA
 CCCGAGTGGCCCTGCTCCAATATGGCAGCACTGTCAAGAATGAGTTCTCCCTCAAGACCTTCAAGAGGAA
 GTCCGAGGTGGAGCGTGTGTCAAGAGGATGCGGCATCTGTCCACGGGCACCATGACCGGGCTGGCCATC
 CAGTATGCCCTGAACATCGATTCTCAGAAGCAGAGGGGGCCCGCCCTGAGGGAGAATGTGCCACGGG
 TCATAATGATCGTGACAGATGGGAGACCTCAGGACTCCGTGGCCGAGGTGGCTGCTAAGGCACGGGACAC
 GGGCATCCTAATCTTTGCCATTGGTGTGGGCCAGGTAGACTTCAACACCTTGAAGTCCATTGGGAGTGGAG
 CCCCATGAGGACCATGTCTTCTTGTGGCAATTTAGCCAGATTGAGACGCTGACCTCCGTGTTCCAGA
 AGAAGTTGTGCACGGCCACATGTGCAGCACCTGGAGCATAACTGTGCCCACTTCTGCATCAACATCCC
 TGGCTCATACGTCTGCAGGTGCAACAAGGCTACATTCTCAACTCGGATCAGACGACTTGCAGAATCCAG
 GATCTGTGTGCCATGGAGGACCACAACCTGTGAGCAGCTCTGTGTGAATGTGCCGGCTCCTTCGTCTGCC
 AGTGCTACAGTGGCTACGCCCTGGCTGAGGATGGGAAGAGGTGTGTGGCTGTGGACTACTGTGCCTCAGA
 AAACCACGGATGTGAACATGAGTGTGTAATGCTGATGGCTCCTACCTTGGCAGTGCCATGAAGGATTT
 GCTCTTAACCCAGATGAAAAACGTGCACAAAGATAGACTACTGTGCCTCATTAATCATGGATGCAGC
 ATGAGTGTGTTAACACAGATGATTCCTATTCTGCCACTGCCTGAAAGGCTTTACCCTGAATCCAGATAA
 GAAAACTGCAGAAGGATCAACTACTGTGCACTGAACAAACCCGGCTGTGAGCATGAGTGGCTCAACATG
 GAGGAGAGCTACTACTGCCGCTGCCACCGTGGCTACACTCTGGACCCCAATGGCAAACTGCAGCCGAG
 TGGACCACTGTGCACAGCAGGACCATGGCTGTGAGCAGCTGTGTCTGAACACGGAGGATTCTTCGTCTG
 CCAGTGCTCAGAAGGCTTCTCATCAACGAGGACCTCAAGACCTGCTCCCGGGTGGATTACTGCCTGCTG
 AGTGACCATGGTGTGAATACTCTGTGCAACATGGACAGATCCTTGGCTGTGAGTGTCTGAGGGAC
 ACGTGCTCCGACGATGGGAAGACGTGTGCAAAATTGGACTCTTGTGCTCTGGGGGACCACGGTTGTGA
 ACATTCGTGTGAAGCAGTGAAGATTCGTTTGTGTGCCAGTGCTTGAAGTTATATACTCCGTGAAGAT
 GAAAAACCTGCAGAAGGAAAGATGTCTGCCAAGCTATAGACCATGGCTGTGAACACATTTGTGTGAACA
 GTGACGACTCATACAGTGCAGTGCTTGGAGGATTCCGGCTCGCTGAGGATGGGAAACCTGCCGAAAG
 GAAGGATGTCTGCAAAATCAACCCACCATGGCTGCGAACACATTTGTGTTAATAATGGGAATTCCTACATC
 TGCAAAATGCTCAGAGGGATTTGTCTAGCTGAGGACGGAAGACGGTGAAGAAATGCACTGAAGGCCAA
 TTGACCTGGTCTTTGTGATCGATGGATCCAAGAGTCTTGGAGAAGAGAATTTTGGAGTGTGAAGCAGTT
 TGTCACTGGAATTATAGATTCCTTGACAATTTCCCCAAAGCCGCTCGAGTGGGGCTGCTCCAGTATTCC
 ACACAGGTCCACACAGAGTTCACCCTGAGAACTTCAACTCAGCCAAAGACATGAAAAAGCCGTGGCCC
 ACATGAAATACATGGGAAAGGCTCTATGACTGGGCTGGCCCTGAAACACATGTTTGAGAGAAGTTTTAC
 CCAAGGAGAAGGGGCCAGGCCCTTTCCACAAGGGTCCCAGAGCAGCCATTGTGTTACCGGACGGACGG
 GCTCAGGATGACGCTCCGAGTGGGCCAGTAAAGCCAAGGCCAATGGTATCACTATGTATGCTGTTGGGG
 TAGGAAAAGCCATTGAGGAGGAACTACAAGAGATTGCCTCTGAGCCACAAAACAGCATCTCTTCTATGC
 CGAAGACTTCAGCACAATGGATGAGATAAGTAAAAACTCAAGAAAGGCATCTGTGAAGCTCTAGAAGAC
 TCCGATGGAAGACAGGACTCTCCAGCAGGGAACTGCCAAAAACGGTCCAACAGCCAACAGTGAACACA
 GATATCTGTTTGAAGAAGACAATCTTTACGGTCTACACAAAAGCTTTCCATTCAACAAAACCTTCAGG
 AAGCCCTTTGGAAGAAAAACACGATCAATGCAAAATGTGAAAACCTTATAATGTTCCAGAACCTTGAAC
 GAAGAAGTAAGAAAATTAACACAGCGCTTAGAAGAAATGACACAGAGAATGGAAGCCCTGGAAAAATCGCC
 TGAGATACAGA

ACGCGTACGCGGCCGCTCGAGCAGAACTCATCTCAGAAGAGGATCTGGCAGCAAATGATATCCTGGATT
 ACAAGGATGACGACGATAAGGTTTAA

Protein Sequence: >RC203833 protein sequence
 Red=Cloning site Green=Tags(s)

MEKMLAGCFLLILGQIVLLPAEARERSRGRSISRGRHARTHPTALLESSENKRADLVFIIDSSRSVNT
 HDYAKVKEFIVDILQFLDIGPDVTRVGLLQYGSTVKNEFLKTFKRKSEVERAVKRMHRLSTGMTGLAI
 QYALNIAFSEAEGARPLRENVPRVIMIVTDGRPQDSVAEVAAKARDTGILIFAIGVGQVDFNTLKSIGSE
 PHEDHVFLVANFSQIETLTSVFQKLLCTAHMCSTLEHNCAHFCINIPGSYVCRCKQGYILNSDQTTCRIQ
 DLCAMEDHNCEQLCVNVPGSFVCQCYSGYALAEADGKRCVAVDYCASENHGCEHECVNADGSYLCQCHEGF
 ALNPDEKTCTKIDYCASSNHGCQHECVNTDDSYSCHCLKGFTLNPDKKTCRRINICALNPGCEHECVNM
 EESYYCRCHRGYTLDPNGKTC SRVDHCAQQDHGCEQLCLNTEDSFVCQCEGFLINEDLKTCSRVDYCLL
 SDHGCEYSCVNMDRSFACQCPEGHVLRSDGKCTAKLDSCALGDHGCEHSCVSSDSFVCQCFEGYILRED
 GKTCRRKDVCQAIDHGCEHICVNSDDSYTCECLEGFRLAEDGKRCRRKDVCSTHHGCEHICVNNNGSYI
 CKCSEGFVLAEDGRRCKCTEGPIDLVFVIDGSKSLGEENFEVVKQFVTGIIDSLTISPKAARVGLLQYS
 TQVHTEFLRNFNKAKMKAHAHMKYMGKGSMTGLALKHMFERSFTQEGARPLSTRVPRAAIVFDGR
 AQDDVSEWASKAKANGITMYAVGVGKAIEEELQEIASEPTNKHLFYAEDFSTMDEISEKLLKKGICEALE
 SDGRQDSPAGELPKTVQQPVTQVHRYLFEEDNLLRSTQKLSHSTKPSGSPLEEKHDQCKCENLIMFQNLAN
 EEVRLKTQRLEEMTQRMEALENRLRYR

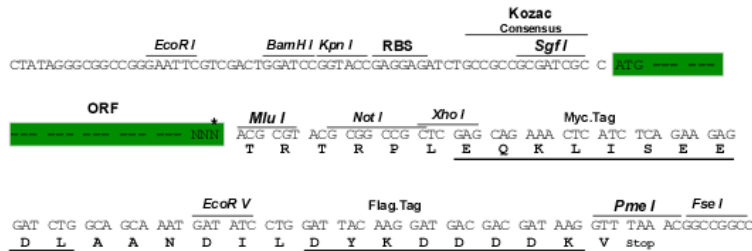
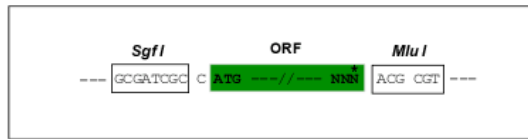
TRTRPLEQKLISEEDLAANDILDYKDDDDKV

Chromatograms: https://cdn.origene.com/chromatograms/mk6540_h10.zip

Restriction Sites: SgfI-MluI

Cloning Scheme:

Cloning sites used for ORF Shuttling:

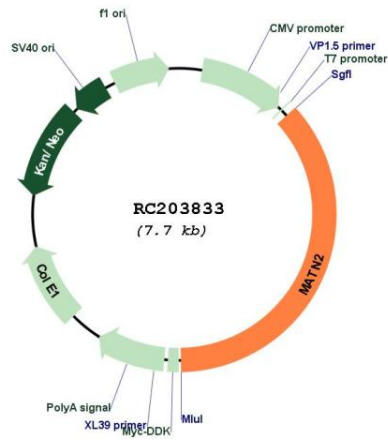


* The last codon before the Stop codon of the ORF

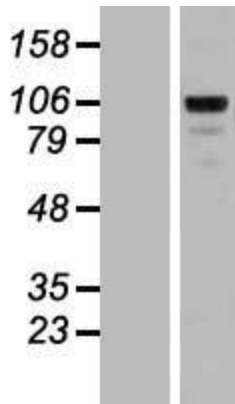
ACCN: NM_030583

ORF Size:	2811 bp
OTI Disclaimer:	The molecular sequence of this clone aligns with the gene accession number as a point of reference only. However, individual transcript sequences of the same gene can differ through naturally occurring variations (e.g. polymorphisms), each with its own valid existence. This clone is substantially in agreement with the reference, but a complete review of all prevailing variants is recommended prior to use. More info
OTI Annotation:	This clone was engineered to express the complete ORF with an expression tag. Expression varies depending on the nature of the gene.
Components:	The ORF clone is ion-exchange column purified and shipped in a 2D barcoded Matrix tube containing 10ug of transfection-ready, dried plasmid DNA (reconstitute with 100 ul of water).
Reconstitution Method:	<ol style="list-style-type: none">1. Centrifuge at 5,000xg for 5min.2. Carefully open the tube and add 100ul of sterile water to dissolve the DNA.3. Close the tube and incubate for 10 minutes at room temperature.4. Briefly vortex the tube and then do a quick spin (less than 5000xg) to concentrate the liquid at the bottom.5. Store the suspended plasmid at -20°C. The DNA is stable for at least one year from date of shipping when stored at -20°C.
RefSeq:	NM_030583.4
RefSeq Size:	4065 bp
RefSeq ORF:	2814 bp
Locus ID:	4147
UniProt ID:	O00339
Cytogenetics:	8q22.1-q22.2
Domains:	VWA, EGF
Protein Families:	Secreted Protein
MW:	104.8 kDa
Gene Summary:	This gene encodes a member of the von Willebrand factor A domain containing protein family. This family of proteins is thought to be involved in the formation of filamentous networks in the extracellular matrices of various tissues. This protein contains five von Willebrand factor A domains. The specific function of this gene has not yet been determined. Two transcript variants encoding different isoforms have been found for this gene. [provided by RefSeq, Jul 2008]

Product images:



Circular map for RC203833



Western blot validation of overexpression lysate (Cat# [LY410787]) using anti-DDK antibody (Cat# [TA50011-100]). Left: Cell lysates from untransfected HEK293T cells; Right: Cell lysates from HEK293T cells transfected with RC203833 using transfection reagent MegaTran 2.0 (Cat# [TT210002]).