

Product datasheet for **RC203832**

C1QC (NM_172369) Human Tagged ORF Clone

Product data:

Product Type:	Expression Plasmids
Product Name:	C1QC (NM_172369) Human Tagged ORF Clone
Tag:	Myc-DDK
Symbol:	C1QC
Synonyms:	C1Q-C; C1QG
Mammalian Cell Selection:	Neomycin
Vector:	pCMV6-Entry (PS100001)
E. coli Selection:	Kanamycin (25 ug/mL)
ORF Nucleotide Sequence:	>RC203832 ORF sequence Red=Cloning site Blue=ORF Green=Tags(s)

TTTTGTAATACGACTCACTATAGGGCGGCCGGAATTCGTCGACTGGATCCGGTACCGAGGAGATCTGCC
GCC**CGATCGCC**

ATGGACGTGGGGCCAGCTCCCTGCCCCACCTTGGGCTGAAGCTGCTGCTGCTCCTGCTGCTGCTGCCCC
TCAGGGGCCAAGCCAACACAGGCTGCTACGGGATCCCAGGGATGCCCGGCCTGCCTGGGGCACCAGGGAA
GGATGGGTACGACGGACTGCCGGGGCCAAGGGGAGCCAGGAATCCCAGCCATTCGGGATCCGAGGA
CCCAAAGGGCAGAAGGGAGAACCCGGCTTACCCGGCCATCCTGGGAAAAATGGCCCATGGGACCCCTG
GGATGCCAGGGGTGCCCGCCCATGGGCATCCCTGGAGAGCCAGGTGAGGAGGGCAGATAACAAGCAGAA
ATTCCAGTCAGTGTTCACGGTCACTCGGCAGACCCACCAGCCCTGCACCCAACAGCCTGATCAGATTC
AACCGGTCCTCACCAACCCGCAGGGAGATTATGACACGAGCACTGGCAAGTTCACCTGCAAAGTCCCCG
GCCTCTACTACTTTGTCTACCACGCGTCGCATACAGCCAACCTGTGCGTGCTGCTGTACCGCAGCGGCGT
CAAAGTGGTCACCTTCTGTGGCCACACGTCCAAAACCAATCAGGTCAACTCGGGCGGTGTGCTGCTGAGG
TTGCAGGTGGGCGAGGAGGTGTGGCTGGCTGTCAATGACTACTACGACATGGTGGGCATCCAGGGCTCTG
ACAGCGTCTTCTCCGGCTTCTGCTCTTCCCCGAC

AG**CGGACCG**ACGCGTACGGCGCGCTCGAGCAGAAACTCATCTCAGAAGAGGATCTGGCAGCAAATGATATCC
TGGATTACAAGGATGACGACGATAAGGTTTAA



[View online »](#)

Protein Sequence: >RC203832 protein sequence
Red=Cloning site Green=Tags(s)

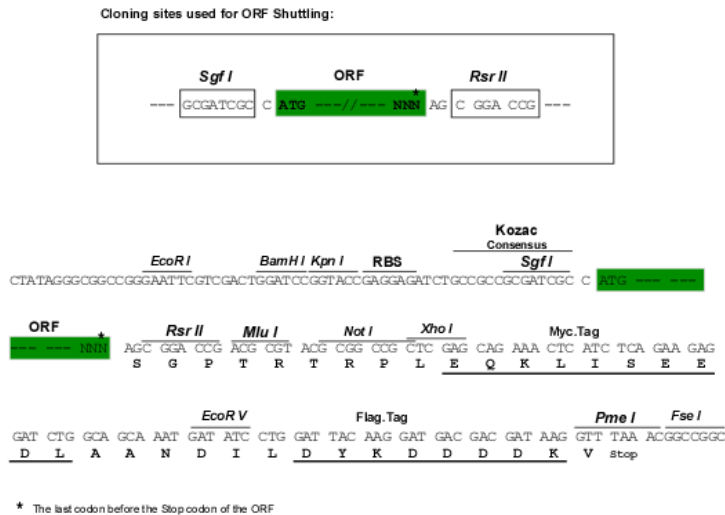
MDVGPSSPLPHLGLKLLLLLLLLPLRQANTGCGYIPGMPGLPGAPGKGDYDGLPGPKGEPGIPAIPGIRG
 PKGQKGEPLPGHPGKNGPMGPPGMPGVPMPGIPGEPGEEGRYKQKFQSVFTVTRQTHQPPAPNSLIRF
 NAVLTNPQGDYDTSTGKFTCKVPLYYFVYHASHTANLCVLLYRSGVKVVTFCGHTSKTNQVNSGGVLLR
 LQVGEEVWLAVNDYYDMVGIQGSDSVFSGFLLFPD

SGPTRTRPLEQKLI SEEDLAANDILDYKDDDDKV

Chromatograms: https://cdn.origene.com/chromatograms/mk6183_e05.zip

Restriction Sites: SgfI-RsrII

Cloning Scheme:



ACCN: NM_172369

ORF Size: 735 bp

OTI Disclaimer: The molecular sequence of this clone aligns with the gene accession number as a point of reference only. However, individual transcript sequences of the same gene can differ through naturally occurring variations (e.g. polymorphisms), each with its own valid existence. This clone is substantially in agreement with the reference, but a complete review of all prevailing variants is recommended prior to use. [More info](#)

OTI Annotation: This clone was engineered to express the complete ORF with an expression tag. Expression varies depending on the nature of the gene.

Components: The ORF clone is ion-exchange column purified and shipped in a 2D barcoded Matrix tube containing 10ug of transfection-ready, dried plasmid DNA (reconstitute with 100 ul of water).

Reconstitution Method:

1. Centrifuge at 5,000xg for 5min.
2. Carefully open the tube and add 100ul of sterile water to dissolve the DNA.
3. Close the tube and incubate for 10 minutes at room temperature.
4. Briefly vortex the tube and then do a quick spin (less than 5000xg) to concentrate the liquid at the bottom.
5. Store the suspended plasmid at -20°C. The DNA is stable for at least one year from date of shipping when stored at -20°C.

RefSeq: [NM_172369.5](#)

RefSeq Size: 1182 bp

RefSeq ORF: 738 bp

Locus ID: 714

UniProt ID: [P02747](#)

Cytogenetics: 1p36.12

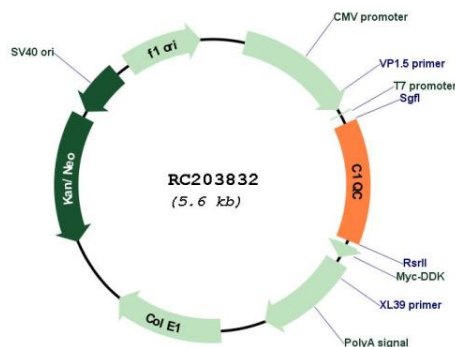
Protein Families: Secreted Protein

Protein Pathways: Complement and coagulation cascades, Prion diseases, Systemic lupus erythematosus

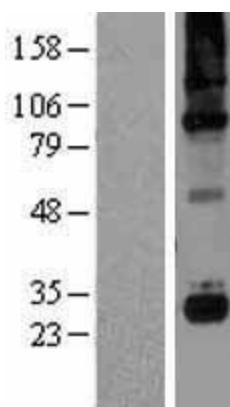
MW: 25.8 kDa

Gene Summary: This gene encodes the C-chain polypeptide of serum complement subcomponent C1q, which associates with C1r and C1s to yield the first component of the serum complement system. C1q is composed of 18 polypeptide chains which include 6 A-chains, 6 B-chains, and 6 C-chains. Each chain contains an N-terminal collagen-like region and a C-terminal C1q globular domain. C1q deficiency is associated with lupus erythematosus and glomerulonephritis. [provided by RefSeq, Dec 2016]

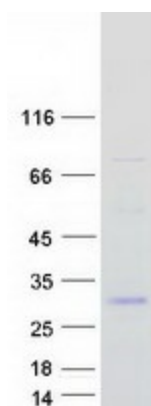
Product images:



Circular map for RC203832



Western blot validation of overexpression lysate (Cat# [LY426451]) using anti-DDK antibody (Cat# [TA50011-100]). Left: Cell lysates from untransfected HEK293T cells; Right: Cell lysates from HEK293T cells transfected with [RC225312] using transfection reagent MegaTran 2.0 (Cat# [TT210002]).



Coomassie blue staining of purified C1QC protein (Cat# [TP303832]). The protein was produced from HEK293T cells transfected with C1QC cDNA clone (Cat# RC203832) using MegaTran 2.0 (Cat# [TT210002]).