

## Product datasheet for **RC203831**

### ROC2 (RNF7) (NM\_014245) Human Tagged ORF Clone

#### Product data:

**Product Type:** Expression Plasmids  
**Product Name:** ROC2 (RNF7) (NM\_014245) Human Tagged ORF Clone  
**Tag:** Myc-DDK  
**Symbol:** ROC2  
**Synonyms:** CKBBP1; rbx2; ROC2; SAG  
**Mammalian Cell Selection:** Neomycin  
**Vector:** pCMV6-Entry (PS100001)  
**E. coli Selection:** Kanamycin (25 ug/mL)  
**ORF Nucleotide Sequence:** >RC203831 ORF sequence  
Red=Cloning site Blue=ORF Green=Tags(s)

TTTTGTAATACGACTCACTATAGGGCGGCCGGAATTCGTCGACTGGATCCGGTACCGAGGAGATCTGCC  
GCC**CGATCGCC**

ATGGCCGACGTGGAAGACGGAGAGGAAACCTGCGCCCTGGCCTCTACTCCGGGAGCTCAGGCTCCAAGT  
CGGGAGGCGACAAGATGTTCTCCCTCAAGAAGTGAACGCGGTGGCCATGTGGAGCTGGGACGTGGAGTG  
CGATACGTGCGCCATCTGCAGGGTCCAGGTGATGGATGCCTGTCTTAGATGTCAAGCTGAAAACAAACAA  
GAGGACTGTGTTGTGGTCTGGGAGAATGTAATCATTCTCCACAAGTCTGCATGTCCCTGTGGGTGA  
AACAGAACAATCGCTGCCCTCTCTGCCAGCAGGACTGGGTGGTCCAAGAATCGGCAA

**ACGCGT**ACGCGGCCGCTCGAGCAGAAACTCATCTCAGAAGAGGATCTGGCAGCAAATGATATCCTGGATT  
ACAAGGATGACGACGATAAGGTTTAA

**Protein Sequence:** >RC203831 protein sequence  
Red=Cloning site Green=Tags(s)  
MADVEDGEETCALASHSGSSGSKSGGDKMFLKKNVAVMWSWVVECDTCAICRVQVMDACLRCQAEKQ  
EDCVVWGEKNHSFHNCCMSLWVKQNNRCPLCQQDWWVQRIGK

**TR**TRPLEQKLISEEDLAANDILDYKDDDDKV

**Chromatograms:** [https://cdn.origene.com/chromatograms/mk6018\\_e04.zip](https://cdn.origene.com/chromatograms/mk6018_e04.zip)

**Restriction Sites:** SgfI-MluI



[View online »](#)

**Cloning Scheme:**


**ACCN:** NM\_014245

**ORF Size:** 339 bp

**OTI Disclaimer:** The molecular sequence of this clone aligns with the gene accession number as a point of reference only. However, individual transcript sequences of the same gene can differ through naturally occurring variations (e.g. polymorphisms), each with its own valid existence. This clone is substantially in agreement with the reference, but a complete review of all prevailing variants is recommended prior to use. [More info](#)

**OTI Annotation:** This clone was engineered to express the complete ORF with an expression tag. Expression varies depending on the nature of the gene.

**Components:** The ORF clone is ion-exchange column purified and shipped in a 2D barcoded Matrix tube containing 10ug of transfection-ready, dried plasmid DNA (reconstitute with 100 ul of water).

**Reconstitution Method:**

1. Centrifuge at 5,000xg for 5min.
2. Carefully open the tube and add 100ul of sterile water to dissolve the DNA.
3. Close the tube and incubate for 10 minutes at room temperature.
4. Briefly vortex the tube and then do a quick spin (less than 5000xg) to concentrate the liquid at the bottom.
5. Store the suspended plasmid at -20°C. The DNA is stable for at least one year from date of shipping when stored at -20°C.

**RefSeq:** [NM\\_014245.5](#)

**RefSeq Size:** 2010 bp

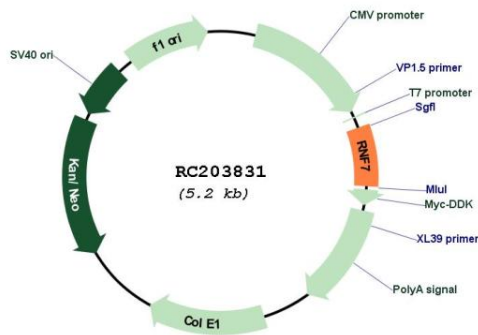
**RefSeq ORF:** 342 bp

**Locus ID:** 9616

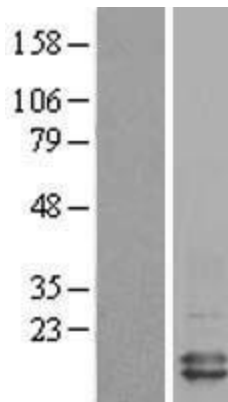
**UniProt ID:** [Q9UBF6](#)  
**Cytogenetics:** 3q23  
**Protein Families:** Druggable Genome  
**Protein Pathways:** Ubiquitin mediated proteolysis  
**MW:** 12.7 kDa

**Gene Summary:** The protein encoded by this gene is a highly conserved ring finger protein. It is an essential subunit of SKP1-cullin/CDC53-F box protein ubiquitin ligases, which are a part of the protein degradation machinery important for cell cycle progression and signal transduction. This protein interacts with, and is a substrate of, casein kinase II (CSNK2A1/CKII). The phosphorylation of this protein by CSNK2A1 has been shown to promote the degradation of IκappaBα (CHUK/IKK-α/IKBKA) and p27Kip1(CDKN1B). Alternatively spliced transcript variants encoding distinct isoforms have been reported. [provided by RefSeq, Jul 2008]

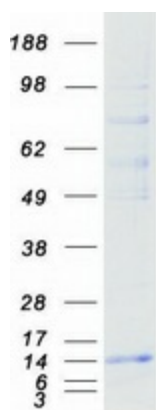
### Product images:



Circular map for RC203831



Western blot validation of overexpression lysate (Cat# [LY402297]) using anti-DDK antibody (Cat# [TA50011-100]). Left: Cell lysates from untransfected HEK293T cells; Right: Cell lysates from HEK293T cells transfected with RC203831 using transfection reagent MegaTran 2.0 (Cat# [TT210002]).



Coomassie blue staining of purified RNF7 protein (Cat# [TP303831]). The protein was produced from HEK293T cells transfected with RNF7 cDNA clone (Cat# RC203831) using MegaTran 2.0 (Cat# [TT210002]).