

Product datasheet for **RC203830**

EIF3D (NM_003753) Human Tagged ORF Clone

Product data:

Product Type:	Expression Plasmids
Product Name:	EIF3D (NM_003753) Human Tagged ORF Clone
Tag:	Myc-DDK
Symbol:	EIF3D
Synonyms:	eIF3-p66; eIF3-zeta; EIF3S7
Mammalian Cell Selection:	Neomycin
Vector:	pCMV6-Entry (PS100001)
E. coli Selection:	Kanamycin (25 ug/mL)



[View online »](#)

ORF Nucleotide Sequence:

>RC203830 ORF sequence
 Red=Cloning site Blue=ORF Green=Tags(s)

TTTTGTAATACGACTCACTATAGGGCGGCCGGAATTCGTCGACTGGATCCGGTACCGAGGAGATCTGCC
 GCC**CGGATCGCC**

ATGGCAAAGTTTCATGACACCCGTGATCCAGGACAACCCCTCAGGCTGGGGTCCCTGTGCGGTTCCCGAGC
 AGTTTCGGGATATGCCCTACCAGCCGTTACGAAAGGAGATCGGCTAGGAAAGGTTGCAGACTGGACAGG
 AGCCACATACCAAGATAAGAGGTACACAATAAGTACTCCTCAGTTTGGTGGTGAAGTCAATATGCT
 TATTTCCATGAGGAGGATGAAAGTAGCTTCCAGCTGGTGGATACAGCGCGCACACAGAAGACGGCTACC
 AGCGGAATCGAATGAGATTTGCCAGAGGAACCTCCGAGAGACAAGATCGTCGGAACATGTTGCAGTT
 CAACCTGCAGATCTGCCTAAGAGTGCCAAACAGAAAGAGAGAGAACGCATTGACTGCAGAAAAAGTTC
 CAGAAACAATTTGGGGTTAGGCAGAAATGGGATCAGAAATCACAGAAACCCCGAGACTCTCAGTTGAAG
 TTCGTAGTGATTGGGAAGTAAAAGAGGAAATGGATTTTCCTCAGTTGATGAAGATGCGCTACTTGAAGT
 ATCAGAGCCACAGGACATTGAGTGTGTGGGGCCCTAGAATACTACGACAAGCCTTTGACCGCATCACC
 ACGAGGAGTGAGAAGCCACTGCGGAGCATCAAGCGCATCTCCACACTGTACCACCACAGACGACCCTG
 TCATCCGCAAGCTGGCAAAAACCTCAGGGGAATGTGTTGCCACTGATGCCATCCTGGCCACGCTGATGAG
 CTGTACCCGCTCAGTGTATTCTGGGATATTGTCGTCCAGAGAGTTGGGTCCAAACTCTTCTTTGACAAG
 AGAGACAACCTGACTTTGACCTCTGACAGTGAGTGAGACTGCCAATGAGCCCCCTCAAGATGAAGGTA
 ATTCCTCAATTCACCCCGCAACCTGGCCATGGAGGCAACCTACATCAACCACAATTTCTCCAGCAGTG
 CTTGAGAATGGGAAGGAAAGATACAACCTCCCAACCCAAACCCGTTTGTGGAGGACGACATGGATAAG
 AATGAAATCGCCTCTGTTGCGTACCGTTACCGCAGGTGGAAGCTTGGAGATGATATTGACCTTATTGTC
 GTTGTGAGCACGATGGCGTCATGACTGGAGCCAACGGGGAAAGTGTCTTCATCAACATCAAGACACTCAA
 TGAGTGGGATTCAGGCACTGTAATGGCGTTGACTGGCGTCAGAAGCTGGACTCTCAGCGAGGGGCTGTC
 ATTGCCACGAGCTGAAGAACAACAGCTACAAGTTGGCCCGTGGACCTGCTGTGCTTTGCTGGCTGGAT
 CTGAGTACCTCAAGCTTGGTTATGTGTCTCGGTACCACGTGAAAGACTCCTCACGCCACGTATCCTAGG
 CACCCAGCAGTTCAAGCCTAATGAGTTTCCAGCCAGATCAACCTGAGCGTGGAGAATGCCTGGGGCATT
 TTACGCTGCGTCATTGACATCTGCATGAAGCTGGAGGAGGGCAAATACCTCATCTCAAGGACCCCAACA
 AGCAGGTCATCCGTGCTACAGCCTCCCTGATGGCACCTCAGCTCTGATGAAGATGAGGAGGAAGAGGA
 GGAGGAAGAAGAGGAAGAAGAAGAGGAAGAAACT

ACGCGTACGCGGCCGCTCGAGCAGAAACTCATCTCAGAAGAGGATCTGGCAGCAAATGATATCCTGGATT
 ACAAGGATGACGACGATAAGGTTTAA

Protein Sequence:

>RC203830 protein sequence
 Red=Cloning site Green=Tags(s)

MAKFMTPVIQDNPSGWGPCAVPEQFRDMPYQPF SKGDR LGK VADWTGATYQDKRYTNKYSSQFGGGSQYA
 YFHEEDESFLVDTARTQKTAYQRNMRFAQRNLRRDKDRRNLQFNLI LPKSAKQKERERIRLQKFK
 QKQFGVRQKWDQKSQKPRDSSVEVRSDWEVKEEMDFPQLMKMRYLEVSEPDIECCGALEYDYKAFDRIT
 TRSEKPLRSIKRIFHTVTTDDPVIRKLAKTQGNVFATDAILATLMSCTRSVYSWDIVVQVRVGSKLFFDK
 RDNSDFDLLTVSETANEPQDEGNSFNSPRNLA MEATYINHNFSQQCLRMGKERYNFPNPNPFVEDDMDK
 NEIASVAYRYRRWKL GDDIDLIVRCEHDGVMTGANGEVSFINIKTLNEWDSRHCNGVDWRQKLD SQRGAV
 IATELKNNYSYKLARWTCALLAGSEY LKLGYSRYHVKDS SRHVILGTQQFKPNEFASQINL SVENAWGI
 LRCVIDICMKLEEGKYLILKDPNKQVIRVYSLPDGTFSSDEDEEEEEEEEEEEEEET

TRTRPLEQKLISEEDLAANDILDYKDDDDKV

Chromatograms:

https://cdn.origene.com/chromatograms/mk6195_a09.zip

Restriction Sites:

Sgfl-Mlul

Cloning Scheme:


ACCN: NM_003753

ORF Size: 1644 bp

OTI Disclaimer: The molecular sequence of this clone aligns with the gene accession number as a point of reference only. However, individual transcript sequences of the same gene can differ through naturally occurring variations (e.g. polymorphisms), each with its own valid existence. This clone is substantially in agreement with the reference, but a complete review of all prevailing variants is recommended prior to use. [More info](#)

OTI Annotation: This clone was engineered to express the complete ORF with an expression tag. Expression varies depending on the nature of the gene.

Components: The ORF clone is ion-exchange column purified and shipped in a 2D barcoded Matrix tube containing 10ug of transfection-ready, dried plasmid DNA (reconstitute with 100 ul of water).

- Reconstitution Method:**
1. Centrifuge at 5,000xg for 5min.
 2. Carefully open the tube and add 100ul of sterile water to dissolve the DNA.
 3. Close the tube and incubate for 10 minutes at room temperature.
 4. Briefly vortex the tube and then do a quick spin (less than 5000xg) to concentrate the liquid at the bottom.
 5. Store the suspended plasmid at -20°C. The DNA is stable for at least one year from date of shipping when stored at -20°C.

Note: Plasmids are not sterile. For experiments where strict sterility is required, filtration with 0.22um filter is required.

RefSeq: [NM_003753.4](#)

RefSeq Size: 1949 bp

RefSeq ORF: 1647 bp

Locus ID: 8664

UniProt ID: [O15371](#)

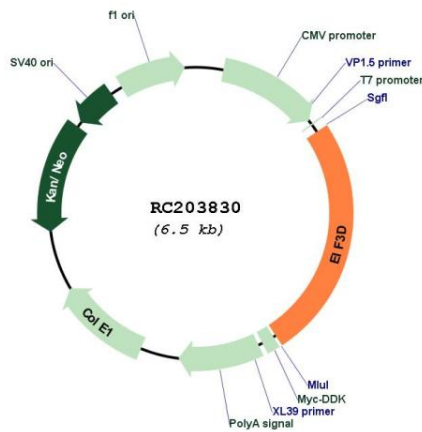
Cytogenetics: 22q12.3

Domains: eIF-3_zeta

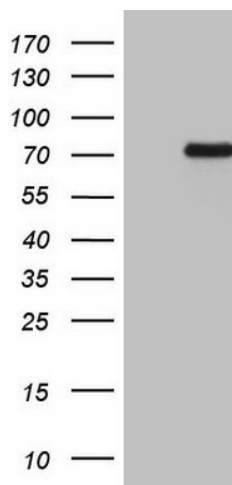
MW: 64 kDa

Gene Summary: Eukaryotic translation initiation factor-3 (eIF3), the largest of the eIFs, is a multiprotein complex composed of at least ten nonidentical subunits. The complex binds to the 40S ribosome and helps maintain the 40S and 60S ribosomal subunits in a dissociated state. It is also thought to play a role in the formation of the 40S initiation complex by interacting with the ternary complex of eIF2/GTP/methionyl-tRNA, and by promoting mRNA binding. The protein encoded by this gene is the major RNA binding subunit of the eIF3 complex. [provided by RefSeq, Jul 2008]

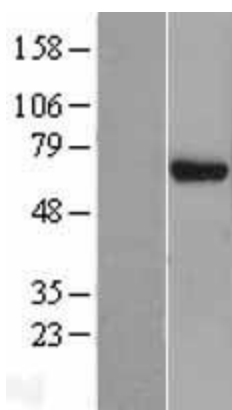
Product images:



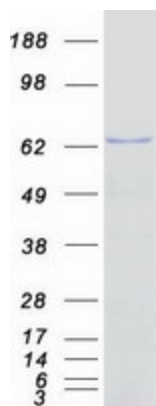
Circular map for RC203830



HEK293T cells were transfected with the pCMV6-ENTRY control (Cat# [PS100001], Left lane) or pCMV6-ENTRY EIF3D (Cat# RC203830, Right lane) cDNA for 48 hrs and lysed. Equivalent amounts of cell lysates (5 ug per lane) were separated by SDS-PAGE and immunoblotted with anti-EIF3D (Cat# [TA808199])(1:2000). Positive lysates [LY401237] (100ug) and [LC401237] (20ug) can be purchased separately from OriGene.



Western blot validation of overexpression lysate (Cat# [LY401237]) using anti-DDK antibody (Cat# [TA50011-100]). Left: Cell lysates from untransfected HEK293T cells; Right: Cell lysates from HEK293T cells transfected with RC203830 using transfection reagent MegaTran 2.0 (Cat# [TT210002]).



Coomassie blue staining of purified EIF3D protein (Cat# [TP303830]). The protein was produced from HEK293T cells transfected with EIF3D cDNA clone (Cat# RC203830) using MegaTran 2.0 (Cat# [TT210002]).