

Product datasheet for **RC203825**

GAS2L1 (NM_006478) Human Tagged ORF Clone

Product data:

Product Type:	Expression Plasmids
Product Name:	GAS2L1 (NM_006478) Human Tagged ORF Clone
Tag:	Myc-DDK
Symbol:	GAS2L1
Synonyms:	GAR22
Mammalian Cell Selection:	Neomycin
Vector:	pCMV6-Entry (PS100001)
E. coli Selection:	Kanamycin (25 ug/mL)



[View online »](#)

ORF Nucleotide Sequence:

>RC203825 ORF sequence
 Red=Cloning site Blue=ORF Green=Tags(s)

TTTTGTAATACGACTCACTATAGGGCGGCCGGAATTCGTCGACTGGATCCGGTACCGAGGAGATCTGCC
 GCC**CGGATCGCC**

ATGGCAGACCCAGTGGCGGGCATCGCGGGTTCGGCGGCCAAGAGCGTGCGGCCATTTTCGCTCCAGTGAGG
 CCTACGTGGAGGCCATGAAGGAGGACCTGGCCGAGTGGCTCAATGCCTTGTACGGCCTGGGTCTCCCGGG
 TGGTGGCGATGGCTTCTGACAGGGCTGGCCACGGGCACGACCCTGTGCCAATGCCAACGCCGTGACC
 GAGGCTGCCCGTGCATTGGCAGCCGCCCGCCGCGCCGAGGTGTGGCTTCCAGGCGCACAGTGTAGTGC
 CTGGCTCCTTCATGGCGCGGACAACGTGGCCACCTTCATCGGCTGGTGGCGGTGGAGCTGGGTGTGCC
 GGAGGTGCTCATGTTGAGACTGAGGACCTGGTGTGCGCAAGAACGAGAAGAGCGTGGTGTGTGCCTG
 CTGGAGGTGGCGGGCGTGGGACGCTGGGCTGTGGCCCCACGCTCGTGCAGTTTGGAGCAGGAGA
 TTGAGCGGGAGCTGCGTGTGCACCCAGCCCAACGCCCTGCCGCTGGGGAGGACACCACTGAAAC
 CGCCCCGCACAGGGACTCCTGCCCGCGCCCGCATGACACCCAGCGACCTGCGCAACTCGACGAG
 CTGGTGAGGGAGATTCTGGGCGCTGCACCTGCCCTGACCAAGTTCCCATGATCAAGGTCTCAGAGGGGA
 AGTACCGTGTGGGGGACTCGAGCCTGCTCATCTTTGTGCGGGTGTGAGGAGCCACGTGATGGTGGCAGT
 GGGTGGTGGCTGGGACACGCTGGAGCATTACCTGGACAAGCACGACCCGTGCCGCTGCTCCTCCACTGCT
 CATCGCCACCCAGCCGAGGGTCTGCACCTTTTCTCCACAGAGGGTGTGCGCCACCACTGCTCCCGCC
 CTGCTAGCCAGTCCCTGGGAGTGGCGCGGGGCTCCCGGCTGAGATGACTCCCGTTAGCTTACGAAG
 CACAAAGGAGGGGCGGAGACCCACCCAGGCCCGGGATCAGCTGCCCCCATCCCGCTCCCGCCG
 TACTCCGGGACAGTACTCCTCAGCCTCCTCCGCCAGAGCGGCCCTTGGTACCCGAGTGTGACA
 CAGGCACTGGCCCCGGAGGGAGCGACCCAGCCGGCGGTGACCACAGGCACCCCGGCTCTCCGAGAC
 GCCTCCTGCCCTGCGCAGCCAGTCCCAGACCGGCTGGATCGCGGCCGGCCCCGGGGGCCCCAGGAGGC
 AGGGGAGCCAGCTGTCGGTCCCAGCCCTGCCCGGCGGCCGAGCCAGAGCCGCGAGGAGCAGGCTG
 TGCTGCTGTGCGCAGGGATCGAGACGGGCAGCACTCATGGGTGCCAAGGGGAGGGGAGTGGGGGCTC
 GGGCAGGAGCACCCCGACTCCCGTGCCTGCGCAGCCCTGCAGCACCCCGGCTTCCCGGGTCTCCAGC
 CCCAGTCCAGAGTTGGGCACCACCCGGCCAGCATCTTCCGCACACCCCTGCAGCTCGACCCGAGCAGG
 AGCAGCAGCTGTCCGGCGCTGGAAGAGGAGTTCCTGGCCAATGCCCGGCCCTTGAGGCTGTTGCTAG
 CGTGACCCCACTGGACAGCCCTGACCCAGCTCGGGCCCCGACCCTCCAGCTCCTGACTCTGCCTAT
 TGTTCCTCCAGTTCCTCCTTCTGTCCTCAGCGTCTGGGTGGCAAATGTGGCCAACTGGGGACTCTG
 GCCGGACGGCCAATGGGCTGCCTGGGCCCGAAGCCAAGCCCTTCCAGCTCCTCCGATGAAGGCAGCCC
 CTGCCCTGGCATGGGGGGCCACTAGATGCACCTGGGAGCCCCCTGGCTTGCAGTGAACCTCGAGGACC
 TGGGCACGGGGTGGATGGACACACAGCCAGACCGTAAACCTCACGTATCCCCACGCTCGGGGCCCC
 GCCGCCCTCCGGACCCGAGAGCTGGGACATGGCATGCCCTGCACTCAGTACCCCGAGGGCTGAGCC
 AGATTCTGGATG

ACGCGTACGCGGGCGCTCGAGCAGAACTCATCTCAGAAGAGGATCTGGCAGCAAATGATATCCTGGATT
 ACAAGGATGACGACGATAAGGTTTAA

Protein Sequence: >RC203825 protein sequence
Red=Cloning site Green=Tags(s)

```
MADPVAGIAGSAAKSVRPFSSSEAYVEAMKEDLAEWLNALYGLGLPGGGDGLFTGLATGTTLCQHANA
EAARALAAARPARGVAFQAHSSVPGSFMARDNVATFIGWCRVELGVPEVLMFETEDLVLRKNEKSVLCL
LEVARRGARLGLLAPRLVQFEQEIERELRAAPPAPNAPAAGEDTTETAPAGTPARGPRMTPSDLRNLDE
LVREILGRCTCPDQFPMIKVSEGGYRVGDSLLIFVVRVLRSHVMVRVGGGWDLEHYLDKHDPCCRSSTA
HRPPQPRVCTFSPQRVSPPTSPRPASVPVGSERRGSRPEMTPVSLRSTKEGPETPPRPRDQLPPhRSRR
YSGDSDSSASSAQSGPLGTRSDDTGTGPRRERSRRLTTGTPASRRPPALRSQSRDRLDRGPRGAPGG
RGAQLSVPSPARRARSQSREEQAVLLVRRDRDQHSWVPRGRGSGGSRSTPQTTPRARSAPARLRSRVSS
PPELGTTPASIFRTPQLDPPQEQQLFRLEEEFLANARALEAVASVTPTPGAPDPPADPPADPSAY
CSSSSSSSSSVLGGKCGQPGDSGRTANGLPGPRSQALSSSSDEGSPCPGMMGPLDAPGSPACTEPTSR
WARGRMDTQPDRKPSRIPTPRGPRRPSGPAELGTWHALHSVTPRAEPDSWM
```

TRTRPLEQKLISEEDLAANDILDYKDDDDKV

Chromatograms: https://cdn.origene.com/chromatograms/mk6540_e10.zip

Restriction Sites: SgfI-MluI

Cloning Scheme:



ACCN: NM_006478

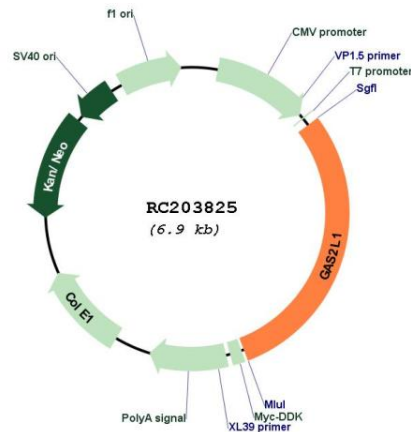
ORF Size: 2043 bp

OTI Disclaimer: The molecular sequence of this clone aligns with the gene accession number as a point of reference only. However, individual transcript sequences of the same gene can differ through naturally occurring variations (e.g. polymorphisms), each with its own valid existence. This clone is substantially in agreement with the reference, but a complete review of all prevailing variants is recommended prior to use. [More info](#)

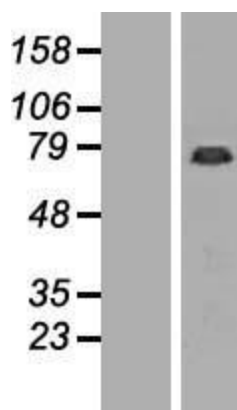
OTI Annotation: This clone was engineered to express the complete ORF with an expression tag. Expression varies depending on the nature of the gene.

- Components:** The ORF clone is ion-exchange column purified and shipped in a 2D barcoded Matrix tube containing 10ug of transfection-ready, dried plasmid DNA (reconstitute with 100 ul of water).
- Reconstitution Method:**
1. Centrifuge at 5,000xg for 5min.
 2. Carefully open the tube and add 100ul of sterile water to dissolve the DNA.
 3. Close the tube and incubate for 10 minutes at room temperature.
 4. Briefly vortex the tube and then do a quick spin (less than 5000xg) to concentrate the liquid at the bottom.
 5. Store the suspended plasmid at -20°C. The DNA is stable for at least one year from date of shipping when stored at -20°C.
- RefSeq:** [NM_006478.2](#)
- RefSeq Size:** 2544 bp
- RefSeq ORF:** 2046 bp
- Locus ID:** 10634
- UniProt ID:** [Q99501](#)
- Cytogenetics:** 22q12.2
- MW:** 72.7 kDa
- Gene Summary:** This gene encodes a member of the growth arrest-specific 2 protein family. This protein binds components of the cytoskeleton and may be involved in mediating interactions between microtubules and microfilaments. This protein localizes to the proximal end of mature centrioles and links centrosomes to both microtubules and actin. Alternate splicing results in multiple transcript variants. A pseudogene of this gene is found on chromosome 9. [provided by RefSeq, May 2018]

Product images:



Circular map for RC203825



Western blot validation of overexpression lysate (Cat# [LY407671]) using anti-DDK antibody (Cat# [TA50011-100]). Left: Cell lysates from untransfected HEK293T cells; Right: Cell lysates from HEK293T cells transfected with [RC211855] using transfection reagent MegaTran 2.0 (Cat# [TT210002]).