

Product datasheet for RC203822

ZFAND2B (NM_138802) Human Tagged ORF Clone

Product data:

Product Type:	Expression Plasmids
Product Name:	ZFAND2B (NM_138802) Human Tagged ORF Clone
Tag:	Myc-DDK
Symbol:	ZFAND2B
Synonyms:	AIRAPL
Mammalian Cell Selection:	Neomycin
Vector:	pCMV6-Entry (PS100001)
E. coli Selection:	Kanamycin (25 ug/mL)
ORF Nucleotide Sequence:	>RC203822 ORF sequence Red=Cloning site Blue=ORF Green=Tags(s)

TTTTGTAATACGACTCACTATAGGGCGCCGGGAATTCGTCGACTGGATCCGGTACCGAGGAGATCTGCC
GCC**CGATCGCC**

ATGGAGTTTCCGGACCTCGGCGCTCACTGTTCCGGAGCCGAGCTGTCAGCGCTTGGATTTTCTGCCGCTTA
AGTGTGATGCCTGCTCAGGCATCTTCTGCGCAGACCATGTGGCCTACGCCAGCATCACTGTGGATCTGC
TTACAAAAGGATATCCAGGTACCTGTGTGCCCTCTCTGTAATGTGCCTGTGCCTGTGGCCAGAGGGGAG
CCCCCTGACCGTGCTGTGGGAGAGCACATTGACAGAGACTGTCGCTCTGATCCAGCACAGCAAAAACGTA
AGATCTTCACCAATAAGTGTGAACGCGCTGGCTGCCGGCAGCGAGAAATGATGAAACTGACCTGTGAACG
CTGTAGCCGAAACTTCTGCATCAAGCACCGGCATCCACTGGACCATGATTGCTCTGGGGAGGGGCACCCA
ACCAGCCGGGCAGGACTTGTGCCATCTCCAGAGCACAAGCTGTGGCTTCTACAAGCACTGTCCCCAGCC
CAAGTCAAACCATGCCTTCTGTACCTCTCCCAGCAGAGCCACAACCCGATCTCCGTCTGGACAGCCCC
TCCAGTGATTGCTTTCAGAAATGGCCTGAGTGAGGATGAAGCTCTGCAGCGGGCCCTGAAATGTCCCTG
GCAGAAACCAACCCAGGTTCCAAGTTGTCAGGAGGAAGAAGACCTAGCTTTAGCACAAGCACTGTCAG
CCAGTGAGGCAGAATACCAGCGGCAGCAGGCCAGAGCCGAGCTCGAAGCCGTCCAACCTGCAGCCTGTG
C

ACGCGTACGCGGCCGCTCGAGCAGAAACTCATCTCAGAAGAGGATCTGGCAGCAAATGATATCCTGGATT
ACAAGGATGACGACGATAAGGTTTAA



[View online »](#)

Protein Sequence: >RC203822 protein sequence
Red=Cloning site Green=Tags(s)

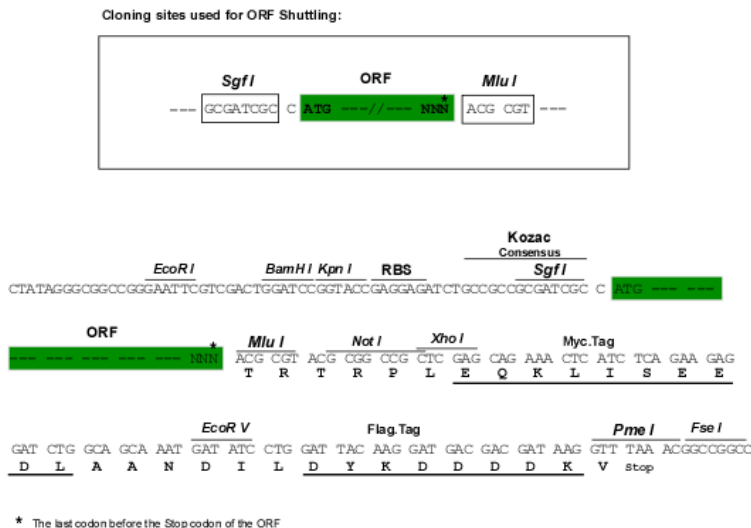
MEFPDLGAHCSEPSQRLDFLPLKCDACSGIFCADHVAYAQHHCGSAYQKDIQVPVPCPLCNVPVPVARGE
 PPDRAVGEHIDRDCRSDPAQQKRKIFTNKCERAGCRQREMMKLTCECSRNFCEIKHRHPLDHDSCSGEGHP
 TSRAGLAAISRAQAVASTSTVSPSQTMPSTSPSRATTRSPSWTAPPVIALQNLSEDEALQRALEMSL
 AETKPQVPSCQEEEDLALAQAALSASEAEYQRQQAQSRSSKPSNCSLC

TRTRPLEQKLISEEDLAANDILDYKDDDDKV

Chromatograms: https://cdn.origene.com/chromatograms/mk6304_c12.zip

Restriction Sites: SgfI-MluI

Cloning Scheme:



ACCN: NM_138802

ORF Size: 771 bp

OTI Disclaimer: The molecular sequence of this clone aligns with the gene accession number as a point of reference only. However, individual transcript sequences of the same gene can differ through naturally occurring variations (e.g. polymorphisms), each with its own valid existence. This clone is substantially in agreement with the reference, but a complete review of all prevailing variants is recommended prior to use. [More info](#)

OTI Annotation: This clone was engineered to express the complete ORF with an expression tag. Expression varies depending on the nature of the gene.

Components: The ORF clone is ion-exchange column purified and shipped in a 2D barcoded Matrix tube containing 10ug of transfection-ready, dried plasmid DNA (reconstitute with 100 ul of water).

Reconstitution Method:

1. Centrifuge at 5,000xg for 5min.
2. Carefully open the tube and add 100ul of sterile water to dissolve the DNA.
3. Close the tube and incubate for 10 minutes at room temperature.
4. Briefly vortex the tube and then do a quick spin (less than 5000xg) to concentrate the liquid at the bottom.
5. Store the suspended plasmid at -20°C. The DNA is stable for at least one year from date of shipping when stored at -20°C.

RefSeq: [NM_138802.3](#)

RefSeq Size: 1323 bp

RefSeq ORF: 774 bp

Locus ID: 130617

UniProt ID: [Q8WV99](#)

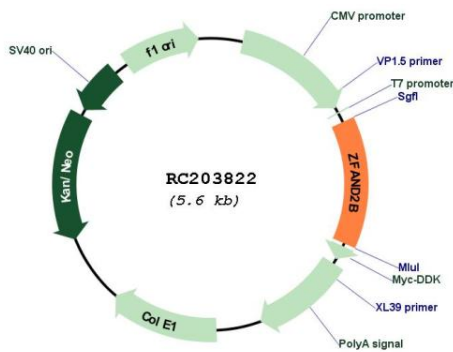
Cytogenetics: 2q35

Domains: ZnF_AN1, UIM

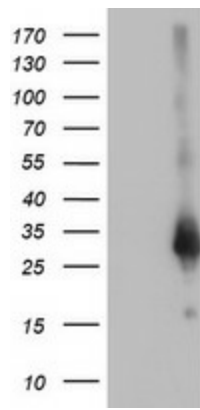
MW: 28 kDa

Gene Summary: This gene encodes a protein containing AN1-type zinc-fingers and ubiquitin-interacting motifs. The encoded protein likely associates with the proteasome to stimulate the degradation of toxic or misfolded proteins. Alternatively spliced transcript variants encoding multiple isoforms have been observed for this gene. [provided by RefSeq, Aug 2012]

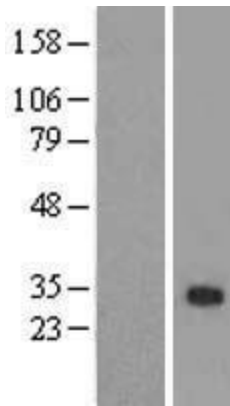
Product images:



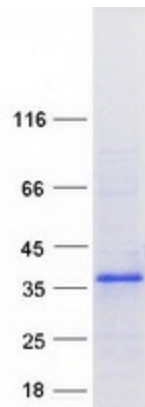
Circular map for RC203822



HEK293T cells were transfected with the pCMV6-ENTRY control (Cat# [PS100001], Left lane) or pCMV6-ENTRY ZFAND2B (Cat# RC203822, Right lane) cDNA for 48 hrs and lysed. Equivalent amounts of cell lysates (5 ug per lane) were separated by SDS-PAGE and immunoblotted with anti-ZFAND2B(Cat# [TA502515]). Positive lysates [LY408488] (100ug) and [LC408488] (20ug) can be purchased separately from OriGene.



Western blot validation of overexpression lysate (Cat# [LY408488]) using anti-DDK antibody (Cat# [TA50011-100]). Left: Cell lysates from untransfected HEK293T cells; Right: Cell lysates from HEK293T cells transfected with RC203822 using transfection reagent MegaTran 2.0 (Cat# [TT210002]).



Coomassie blue staining of purified ZFAND2B protein (Cat# [TP303822]). The protein was produced from HEK293T cells transfected with ZFAND2B cDNA clone (Cat# RC203822) using MegaTran 2.0 (Cat# [TT210002]).