

Product datasheet for RC203807

CHI3L2 (NM_001025199) Human Tagged ORF Clone

Product data:

| | |
|---------------------------|-------------------------------------------------------------------|
| Product Type: | Expression Plasmids |
| Product Name: | CHI3L2 (NM_001025199) Human Tagged ORF Clone |
| Tag: | Myc-DDK |
| Symbol: | CHI3L2 |
| Synonyms: | CHIL2; YKL-39; YKL39 |
| Mammalian Cell Selection: | Neomycin |
| Vector: | pCMV6-Entry (PS100001) |
| E. coli Selection: | Kanamycin (25 ug/mL) |
| ORF Nucleotide Sequence: | >RC203807 ORF sequence Red=Cloning site Blue=ORF Green=Tags(s) |

TTTTGTAATACGACTCACTATAGGGCGGCCGGAATTCGTCGACTGGATCCGGTACCGAGGAGATCTGCC
GCC**CGATCGCC**

ATGGGAGCAACCACCATGGACCAGAAGTCTCTCTGGGCAGGTGTAGTGGTCTTGCTGCTTCTCCAGGGAG
GATCTGCCTACAACTGGTTTGCTACTTTACCAACTGGTCCCAGGACCGGCAGGAACCAGGAAAATTCAC
CCCTGAGAATATTGACCCCTTCTATGCTCTCATCTCATCTATTTCGCCAGCATCGAAAACAACAAG
GTTATCATCAAGGACAAGAGTGAAGTATGCTCTACCAGACCATCAACAGTCTCAAACCAAGAATCCCA
AACTGAAAATCTCTTGCCATTGGAGGGTACCTGTTTGGTTCCAAAGGGTTCACCCCTATGGTGGATTC
TTCTACATCAGCCTTGAATTCATTAACCCATAATCCTGTTTCTGAGGAACCATAAAGTTGATGGACTG
GATGTAAGCTGGATCTACCCAGATCAGAAAGAAAACACTATTTCACTGTGCTGATTCATGAGTTAGCAG
AAGCCTTTCAGAAGGACTTCACAAAATCCACCAAGGAAAGGCTTCTCTTGACTGTGGCGTATCTGCAGG
GAGGCAATGATTGATAACAGCTATCAAGTTGAGAAACTGGCAAAAGATCTGGATTTTCATCAACCTCCTG
TCCTTTGACTTCCATGGGTCTTGGGAAAAGCCCTTATCACTGGCCACAACAGCCCTCTGAGCAAGGGGT
GGCAGGACAGAGGGCCAAGCTCTACTACAATGTGGAATATGCTGTGGGTACTGGATACATAAGGGAAT
GCCATCAGAGAAGGTGGTCATGGGCATCCCCACATATGGGCACCTCTTCACTGGCCTCTGCAGAAACC
ACCGTGGGGCCCTGCCTCTGGCCCTGGAGCTGCTGGACCCATCACAGAGTCTTCAGGCTTCTGGCCT
ATTATGAGATCTGCCAGTTCCTGAAAGGAGCAAGATCACGCGGCTCCAGGATCAGCAGGTTCCCTACGC
AGTCAAGGGGAACCAGTGGGTGGCTATGATGATGTGAAGAGTATGGAGACCAAGTTTCAGTTCTTAAAG
AATTTAAACCTGGGAGGACCATGATCTGGTCTATTGACATGGATGACTTCACTGGCAAATCCTGCAACC
AGGGCCCTTACCCTCTTGTCCAAGCAGTCAAGAGAAGCCTTGGCTCCCTG

ACGCGTACGCGGCCGCTCGAGCAGAAACTCATCTCAGAAGAGGATCTGGCAGCAAATGATATCCTGGATT
ACAAGGATGACGACGATAAGGTTTAA



[View online >](#)

Protein Sequence: >RC203807 protein sequence
Red=Cloning site Green=Tags(s)

MGATTMDQKSLWAGVVVLLLLQGG SAYKLVCYFTNWSQDRQEPGKFTPENIDPFLCSHLIYSFASIENNK
 V I I K D K S E V M L Y Q T I N S L K T K N P K L K I L L S I G G Y L F G S K G F H P M V D S S T S R L E F I N S I I L F L R N H N F D G L
 D V S W I Y P D Q K E N T H F T V L I H E L A E A F Q K D F T K S T K E R L L L T V G V S A G R Q M I D N S Y Q V E K L A K D L D F I N L L
 S F D F H G S W E K P L I T G H N S P L S K G W Q D R G P S S Y N V E Y A V G Y W I H K G M P S E K V V M G I P T Y G H S F T L A S A E T
 T V G A P A S G P G A A G P I T E S S G F L A Y Y E I C Q F L K G A K I T R L Q D Q Q V P Y A V K G N Q W V G Y D D V K S M E T K V Q F L K
 N L N L G G A M I W S I D M D D F T G K S C N Q G P Y P L V Q A V K R S L G S L

TRTRPLEQKLISEEDLAANDILDYKDDDDKV

Chromatograms: https://cdn.origene.com/chromatograms/mk6088_e12.zip

Restriction Sites: SgfI-MluI

Cloning Scheme:



ACCN: NM_001025199

ORF Size: 1173 bp

OTI Disclaimer: The molecular sequence of this clone aligns with the gene accession number as a point of reference only. However, individual transcript sequences of the same gene can differ through naturally occurring variations (e.g. polymorphisms), each with its own valid existence. This clone is substantially in agreement with the reference, but a complete review of all prevailing variants is recommended prior to use. [More info](#)

OTI Annotation: This clone was engineered to express the complete ORF with an expression tag. Expression varies depending on the nature of the gene.

Components: The ORF clone is ion-exchange column purified and shipped in a 2D barcoded Matrix tube containing 10ug of transfection-ready, dried plasmid DNA (reconstitute with 100 ul of water).

Reconstitution Method:

1. Centrifuge at 5,000xg for 5min.
2. Carefully open the tube and add 100ul of sterile water to dissolve the DNA.
3. Close the tube and incubate for 10 minutes at room temperature.
4. Briefly vortex the tube and then do a quick spin (less than 5000xg) to concentrate the liquid at the bottom.
5. Store the suspended plasmid at -20°C. The DNA is stable for at least one year from date of shipping when stored at -20°C.

RefSeq Size: 1516 bp

RefSeq ORF: 936 bp

Locus ID: 1117

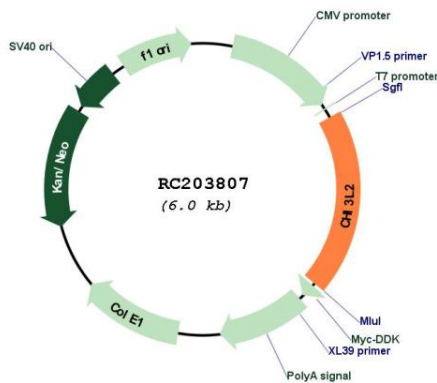
UniProt ID: [Q15782](https://www.uniprot.org/uniprot/Q15782)

Cytogenetics: 1p13.2

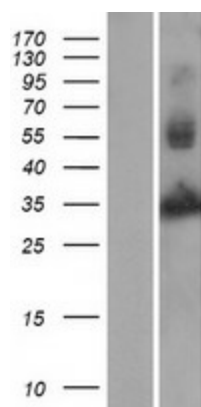
MW: 43.5 kDa

Gene Summary: The protein encoded by this gene is similar to bacterial chitinases but lacks chitinase activity. The encoded protein is secreted and is involved in cartilage biogenesis. Several transcript variants encoding different isoforms have been found for this gene. [provided by RefSeq, Apr 2012]

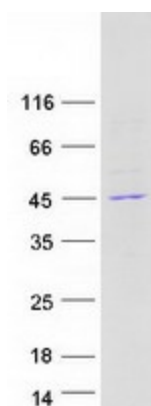
Product images:



Circular map for RC203807



Western blot validation of overexpression lysate (Cat# [LY400404]) using anti-DDK antibody (Cat# [TA50011-100]). Left: Cell lysates from un-transfected HEK293T cells; Right: Cell lysates from HEK293T cells transfected with RC203807 using transfection reagent MegaTran 2.0 (Cat# [TT210002]).



Coomassie blue staining of purified CHI3L2 protein (Cat# [TP303807]). The protein was produced from HEK293T cells transfected with CHI3L2 cDNA clone (Cat# RC203807) using MegaTran 2.0 (Cat# [TT210002]).