

Product datasheet for **RC203805**

Papillary renal cell carcinoma (PRCC) (NM_005973) Human Tagged ORF Clone

Product data:

Product Type:	Expression Plasmids
Product Name:	Papillary renal cell carcinoma (PRCC) (NM_005973) Human Tagged ORF Clone
Tag:	Myc-DDK
Symbol:	Papillary renal cell carcinoma
Synonyms:	RCCP1; TPRC
Mammalian Cell Selection:	Neomycin
Vector:	pCMV6-Entry (PS100001)
E. coli Selection:	Kanamycin (25 ug/mL)



[View online »](#)

ORF Nucleotide Sequence:

>RC203805 ORF sequence
 Red=Cloning site Blue=ORF Green=Tags(s)

TTTTGTAATACGACTCACTATAGGGCGGCCGGGAATTCGTCGACTGGATCCGGTACCGAGGAGATCTGCC
 GCC**CGATCGCC**

ATGTCGCTGGTTGCTTACGCCAGCAGCGATGAGAGCGAGCCGGATGAGGCTGAGCCCGAGCCGGAGGAAG
 AGGAGGCGGTGGCTCCTACATCTGGGCCGCTTTAGGGGCTTGTTCGCTTCTCTCCCTGCGCCCAAGG
 TCCGGCCTTGCTGCCTCCGCCCTCAGATGCTGGCGCCAGCCTTCCCCCGCCGCTGTTGCTTCCCCCA
 CCCACCGAGACCCAGGCTTACGCTCCTCCCCCTTGCCTTTCGGCCTGGGAGGCTTCCCCCACCTC
 CAGGCGTGAGCCCGGCTGAAGCGCGGGAGTTGGGGAGGACTGGGATTGGGGTTGCCCTCGCCCGAGG
 CCCTGGCCTCAATCTGCCCTCCAATTGGCGGTGCCGGTCCCCCGTGGGGCTTCCAAGCAAAGAAG
 AGGAAAGAGCCCGTGAAGATCGCGGCGCCGGAGTTGCATAAGGGAGATTCAGATTCTGAGGAAGTGAAC
 CCACAAAGAAGAAAATCCTTACAGGATCCAGTGAGGGGACTGGTTTGTCTGCCTTGTCTCCCAACC
 TAAAACTGACTGTGAAAGAGACTAACAGTTGCTCCTGCCCATGCCTTCTCCCGCAAACCCTCGGAT
 GGTCCCCCTGATACTAAGCCCTCCAGACTGGCTTCTAAGACCAAGACTTCTCTCTTGCCTGTTGTGG
 GCACCACAACCACCACTCCGTCGCCCTCTGCTATCAAGGCTGCTGCCAAGAGTGCTGCCCTGCAGGTGAC
 AAAGCAGATCACGCAGGAAGAAGACGACAGTATGAGGAAGTAGCCCCGAAAATTTTTCTCCCTCCCT
 GAAAAGGCTGAGCCACCTGGAGTTGAGCCATACCTTACCCCATCCCACTGTCCCTGAAGAGCTGCCTC
 CAGGCACGGAACCCAGAGCCGGCTTCCAGGACGATGCAGCCAATGCCCCCTTGAATTCAAGATGGCAGC
 AGGTTCAAGTGGGGCCCTTGGATGCCTAAGCTGGGGACGACTACAGCTACAATCAGTTTTCCACATAT
 GGCGATGCCAATGCCGCTGGTGCTTATTATCAGGATTATTACAGTGGTGGCTACTATCCTGCACAGGACC
 CGGCCCTGGTCCCACCCAGGAAATGCCCCAGATGCCTCCTTCATCGATGACGAAGCATTAAAGCGGCT
 GCAGGGCAAGAGGAACCGAGGGAGAGAAGAAATCAACTTTGTGGAGATCAAAGGTGATGACCAGCTCAGT
 GGGGCCAGCAATGGATGACTAAGTCATTGACAGAAGAGAAAACCATGAAGTCATTACAGAAAAAGAAAG
 GTGAGCAGCCAACAGGCCAGCAGCGGGAAACACCAGATCACATATCTTATTATCAGGCCAAGGAGCG
 GGAGCTGGAACGAAGAACACCTGGTCAGAGAACAAGCTCAGCCGCCGTGAGCCCAAGCCAATATGGA
 TTC

ACGCGTACGCGGCCGCTCGAGCAGAAACTCATCTCAGAAGAGGATCTGGCAGCAAATGATATCTGGATT
 ACAAGGATGACGACGATAAGGTTTAA

Protein Sequence:

>RC203805 protein sequence
 Red=Cloning site Green=Tags(s)

MSLVAYASSDESEPDEAEPEPEEEEEAVAPTSGPALGGLFASLPAPKGPALLPPPPQMLAPAFPPPLLLPP
 PTGDPRLQPPPLPFGLGGFPPPPGVSPAEEAGVGEGLGLLPSRPGPLNLPPIGGAPPLGLPKPKK
 RKEPVKIAAPELHKGSDSEDEPTKKKTILQGSSEGTGLSALLPQPKNLTVKETNRLLLPFAFSRKPSPD
 GSPDTPKPSRLASKTKTSSLAPVVGTTTTTPSPSAIKAAKSAALQVTKQITQEEDDSDEEVAPENFFSLP
 EKAEPGVEPYPIPTVPEELPPGTEPEPAFQDDAANAPLEFKMAAGSSGAPWMPKPGDDYSYNQFSTY
 GDANAAGAYYQDYSGGYPAQDPALVPTQEIAPDASFIDDEAFKRLQGKRNRGREEINFVEIKGDDQLS
 GAQQWMTKSLTEKTMKSFSKKKGEOPTGQRRKHQITYLIHQAKERELELKNTWSENKLSRRQTQAKYGF

TRTRPLEQKLISEEDLAANDILDYKDDDDKV

Chromatograms:

https://cdn.origene.com/chromatograms/mk6302_c02.zip

Restriction Sites:

Sgfl-Mlul

Cloning Scheme:



ACCN: NM_005973

ORF Size: 1473 bp

OTI Disclaimer: The molecular sequence of this clone aligns with the gene accession number as a point of reference only. However, individual transcript sequences of the same gene can differ through naturally occurring variations (e.g. polymorphisms), each with its own valid existence. This clone is substantially in agreement with the reference, but a complete review of all prevailing variants is recommended prior to use. [More info](#)

OTI Annotation: This clone was engineered to express the complete ORF with an expression tag. Expression varies depending on the nature of the gene.

Components: The ORF clone is ion-exchange column purified and shipped in a 2D barcoded Matrix tube containing 10ug of transfection-ready, dried plasmid DNA (reconstitute with 100 ul of water).

- Reconstitution Method:
1. Centrifuge at 5,000xg for 5min.
 2. Carefully open the tube and add 100ul of sterile water to dissolve the DNA.
 3. Close the tube and incubate for 10 minutes at room temperature.
 4. Briefly vortex the tube and then do a quick spin (less than 5000xg) to concentrate the liquid at the bottom.
 5. Store the suspended plasmid at -20°C. The DNA is stable for at least one year from date of shipping when stored at -20°C.

RefSeq: [NM_005973.3](#)

RefSeq Size: 2142 bp

RefSeq ORF: 1476 bp

Locus ID: 5546

UniProt ID: [Q92733](#)

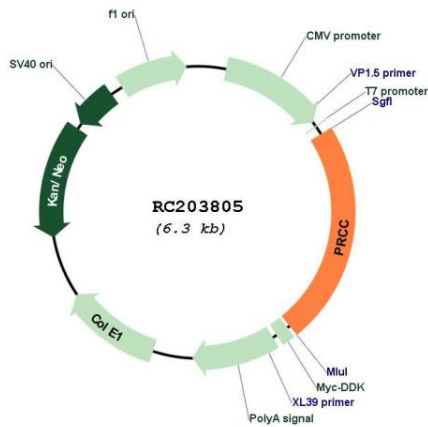
Cytogenetics: 1q23.1

Protein Families: Druggable Genome

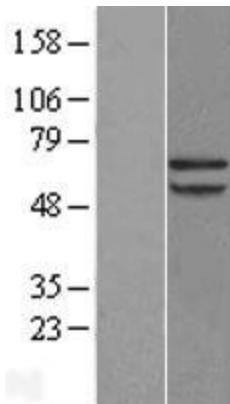
MW: 52.4 kDa

Gene Summary: This gene encodes a protein that may play a role in pre-mRNA splicing. Chromosomal translocations (X;1)(p11;q21) that result in fusion of this gene to TFE3 (GeneID 7030) have been associated with papillary renal cell carcinoma. A PRCC-TFE3 fusion protein is expressed in affected carcinomas and is likely associated with altered gene transactivation. This fusion protein has also been associated with disruption of the cell cycle.[provided by RefSeq, Aug 2010]

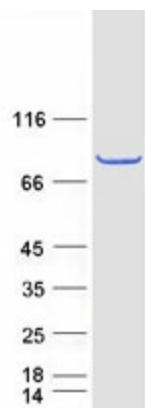
Product images:



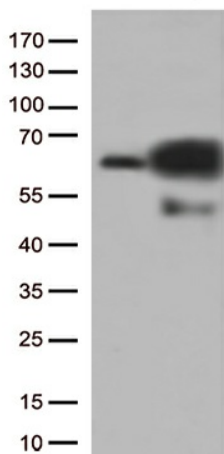
Circular map for RC203805



Western blot validation of overexpression lysate (Cat# [LY416956]) using anti-DDK antibody (Cat# [TA50011-100]). Left: Cell lysates from untransfected HEK293T cells; Right: Cell lysates from HEK293T cells transfected with RC203805 using transfection reagent MegaTran 2.0 (Cat# [TT210002]).



Coomassie blue staining of purified PRCC protein (Cat# [TP303805]). The protein was produced from HEK293T cells transfected with PRCC cDNA clone (Cat# RC203805) using MegaTran 2.0 (Cat# [TT210002]).



HEK293T cells were transfected with the pCMV6-ENTRY control (Cat# [PS100001], Left lane) or pCMV6-ENTRY PRCC (Cat# RC203805, Right lane) cDNA for 48 hrs and lysed. Equivalent amounts of cell lysates (5 ug per lane) were separated by SDS-PAGE and immunoblotted with anti-PRCC (Cat# [TA812966]). Positive lysates [LY416956] (100ug) and [LC416956] (20ug) can be purchased separately from OriGene.