

Product datasheet for **RC203801**

SNT2 (FRS3) (NM_006653) Human Tagged ORF Clone

Product data:

Product Type:	Expression Plasmids
Product Name:	SNT2 (FRS3) (NM_006653) Human Tagged ORF Clone
Tag:	Myc-DDK
Symbol:	SNT2
Synonyms:	FRS2-beta; FRS2B; FRS2beta; SNT-2; SNT2
Mammalian Cell Selection:	Neomycin
Vector:	pCMV6-Entry (PS100001)
E. coli Selection:	Kanamycin (25 ug/mL)



[View online »](#)

ORF Nucleotide Sequence:

>RC203801 ORF sequence
 Red=Cloning site Blue=ORF Green=Tags(s)

TTTTGTAATACGACTCACTATAGGGCGGCCGGAATTCGTCGACTGGATCCGGTACCGAGGAGATCTGCC
 GCC**CGCATCGCC**

ATGGGGAGCTGCTGCAGCTGCCTGAACAGAGACAGCGTTCAGACAACCACCCACCAAGTCAAGGTGA
 CAAATGTGGATGATGAGGGGGTGGAGCTGGGCTCTGGGGTATGGAGCTGACGCAGAGTGAGCTGGTGT
 GCACCTGCATCGGCGTGAGGCCGTCGCTGGCCTTATCTCTGCTTGGCGGCTATGGCTACGACTCCAAC
 CTCTTCTCCTTTGAGAGTGGCCGCGATGTCAGACAGGCCAGGGAATATTTGCATTTAAGTGTCCCGGG
 CTGAGGAAATCTCAACCTCCTTCAGGATCTGATGCAGTGAACAGCATCAATGTGATGGAAGAGCTGT
 CATCATCACCCGCAATAGCCACCCCGCTGAGCTTGACCTCCCTCGAGCCCCCAGCCACCCAATGCTCTA
 GGCTACACTGTCTCCAGCTTTTCCAATGGCTGCCCTGGAGAGGGCCACGATTCTCAGCTCCCCGGCGGC
 TCTCGACAAGCAGCTGCGGCACCCCTCGCTTGGGAAGAGTCCACCCATGCCCTCATTGCTCCTGATGA
 GCAGTCCCACACCTATGTCAACACACCGGCCAGTGAAGATGACCACCGCAGGGGCCCGCCACTGCCTGCAG
 CCCTGCCTGAGGGTCAAGCACCCCTTCTCCCGCAGGCCCGGGGACCTGACCAACGGGACCCACAGGTGT
 TCTTGCAGCCAGGCCAGGTGAAGTTTGTGTTGGGCCCGACCCCTGCTCGCGGCACATGGTGAAGTGCCA
 GGGCCTCTGTCCCAGCCTGCATGACCCCCACACCACAATAATAACAATGAGGCCCTTCTGAGTGTCCA
 GCCCAGCCCAAGTGCACCTACGAGAAGTCAACCGGGGGCTGTGGCGAGGGGCTGGCTGGAGACTGAGCC
 CAGAGGAGCCGGGCTGGAATGGCCTTGCCACCGCCGGGCGCCCTGTGCACTATGAGAACCTGCCCCC
 ACTGCCCCCTGTGTGGGAAAGCCAAGCCAGCAGCTGGGAGGGGAGGCTGGGGATGATGGGACTCGAGG
 GATGGGCTCACACCCTTCCAATGGCTTCCCTGATGGTGAGGAGACGAGACCCCACTGCAGAAGCCCA
 CCAGACCCCGGGCCCATCCGACGCCACGGCAGCTTTCCTGTGCCACTGACCCGCGCCGCGCTCCCC
 AAGGGTCTTCAACTTTGATTTCCGCGGGCCGGGCGCCGAGCCCCAAGGCAGCTTAACTACATCCAGGTG
 GAGCTAAAGGGCTGGGGTGGAGACCGCCCTAAGGGGCCCAAGACCCCTCGAGCCCCAAGCCCCATGC
 CCACCACCACCTGCCGAAGCTCAGACTCCTACGCCGTGATTGACCTCAAAAAGACCGTGGCCATGTC
 CAACCTGCAGAGACTCTGCCCCGAGACGATGGCACCGCCAGGAAAACCGGCACAACAGCACCGACCTG
 CCTCTG

ACGCGTACGCGGCCGCTCGAGCAGAAACTCATCTCAGAAGAGGATCTGGCAGCAAATGATATCCTGGATT
 ACAAGGATGACGACGATAAGGTTTAA

Protein Sequence:

>RC203801 protein sequence
 Red=Cloning site Green=Tags(s)

MGSCSCLNRDSVPDNHPTKFKVTVNVDDEGVELGSGVMELTQSELVHLHRRREAVRWPYLCLRRYGYDSN
 LFSFESGRRCQTGQIFAFKCSRAEEIFNLLQDLMQCNSINVMEEPVIITRNSHPAELDLPRAPQPPNAL
 GYTVSSFSNGCPGEGPRFSAPRRLSTSSLRHPSLGEESTHALIAPDEQSHTYVNTPA SEDDHRGRHCLQ
 PLPEGQAPFLPQARGPDQRDPQVFLQPGQVKFVLGPTPARRHMKCQGLCPSLHDPPHHNNNEAPSECP
 AQPCKTYENVTGGLWRGAGWRLSPEEPGWNL AHRRAALLHYENLPPLPPVWESQAQQLGGEAGDDGDSR
 DGLTPSSNGFPDGEDETP LQKPTSTRAAIRSHGSFPVPLTRRRGSPRVFNDFRRPGPEPPRLNYIQV
 ELKGGWGGDRPKGPQNPPSPQAPMPTTHPARSSDSYAVIDLKKTVAMSNLQRALPRDDGTARKTRHNSTD
 LPL

TRTRPLEQKLISEEDLAANDILDYKDDDDKV

Restriction Sites:

Sgfl-Mlul

Cloning Scheme:


ACCN: NM_006653

ORF Size: 1476 bp

OTI Disclaimer: Due to the inherent nature of this plasmid, standard methods to replicate additional amounts of DNA in E. coli are highly likely to result in mutations and/or rearrangements. Therefore, OriGene does not guarantee the capability to replicate this plasmid DNA. Additional amounts of DNA can be purchased from OriGene with batch-specific, full-sequence verification at a reduced cost. Please contact our customer care team at custsupport@origene.com or by calling 301.340.3188 option 3 for pricing and delivery.

The molecular sequence of this clone aligns with the gene accession number as a point of reference only. However, individual transcript sequences of the same gene can differ through naturally occurring variations (e.g. polymorphisms), each with its own valid existence. This clone is substantially in agreement with the reference, but a complete review of all prevailing variants is recommended prior to use. [More info](#)

OTI Annotation: This clone was engineered to express the complete ORF with an expression tag. Expression varies depending on the nature of the gene.

Components: The ORF clone is ion-exchange column purified and shipped in a 2D barcoded Matrix tube containing 10ug of transfection-ready, dried plasmid DNA (reconstitute with 100 ul of water).

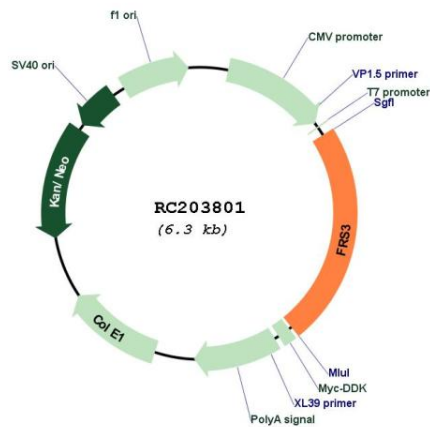
- Reconstitution Method:**
1. Centrifuge at 5,000xg for 5min.
 2. Carefully open the tube and add 100ul of sterile water to dissolve the DNA.
 3. Close the tube and incubate for 10 minutes at room temperature.
 4. Briefly vortex the tube and then do a quick spin (less than 5000xg) to concentrate the liquid at the bottom.
 5. Store the suspended plasmid at -20°C. The DNA is stable for at least one year from date of shipping when stored at -20°C.

RefSeq: [NM_006653.5](#)

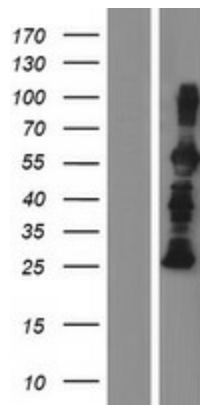
RefSeq Size: 2198 bp
 RefSeq ORF: 1479 bp
 Locus ID: 10817
 UniProt ID: [O43559](#)
 Cytogenetics: 6p21.1
 Protein Families: Druggable Genome
 MW: 54.5 kDa

Gene Summary: This gene encodes a substrate for the fibroblast growth factor receptor. The encoded protein is found in the peripheral plasma membrane and links fibroblast growth factor receptor stimulation to activators of Ras. The encoded protein down-regulates extracellular regulated kinase 2 through direct binding. [provided by RefSeq, Jul 2013]

Product images:



Circular map for RC203801



Western blot validation of overexpression lysate (Cat# [LY416507]) using anti-DDK antibody (Cat# [TA50011-100]). Left: Cell lysates from untransfected HEK293T cells; Right: Cell lysates from HEK293T cells transfected with RC203801 using transfection reagent MegaTran 2.0 (Cat# [TT210002]).