

Product datasheet for **RC203798**

Dystrobrevin beta (DTNB) (NM_183361) Human Tagged ORF Clone

Product data:

Product Type:	Expression Plasmids
Product Name:	Dystrobrevin beta (DTNB) (NM_183361) Human Tagged ORF Clone
Tag:	Myc-DDK
Symbol:	Dystrobrevin beta
Mammalian Cell Selection:	Neomycin
Vector:	pCMV6-Entry (PS100001)
E. coli Selection:	Kanamycin (25 ug/mL)



[View online »](#)

ORF Nucleotide Sequence:

>RC203798 ORF sequence
 Red=Cloning site Blue=ORF Green=Tags(s)

TTTTGTAATACGACTCACTATAGGGCGGCCGGAATTCGTCGACTGGATCCGGTACCGAGGAGATCTGCC
 GCCGCGATCGCC

ATGATTGAGGAAAGTGGGAACAAGCGGAAGACCATGGCAGAGAAGAGGCAGCTGTTCATAGAAATGCGTG
 CTCAGAATTTTGTATGTCATACGACTATCAACTTACAGAACAGCCTGCAAATTACGATTTGTACAAAACG
 ATGCAACCTTCATCTTGTGATATCTGGAACATGATTGAAGCCTCCGAGACAATGGCCTTAATACACTG
 GACCATACCACCGAGATCAGTGTGTCCCGCCTCGAAACTGTCATCTCCTCCATCTACTATCAGTTGAACA
 AGCGCCTTCTTTACTCACAAATTAGTGTGGAACAATCTATCAGCCTCCTCCTCAACTTTATGATTGC
 TGCATATGACAGTGAGGGCCGAGGCAAGTTGACGGTATTTTCAGTTAAAGCTATGTTAGCAACCATGTGT
 GGTGGAAAAATGCTGGACAAATTGAGATATGTTTTCTCCAGATGTCAGATTCCAATGGCTTAATGATAT
 TTAGCAAGTTTGACCAGTTTCTGAAGGAAGTTCTGAAGCTCCCAACAGCTGTCTTTGAAGGGCCATCTTT
 TGTTTACACAGAGCACTCAGTCCGCACCTGTTTTCCACAGCAGAGAAAGATAATGCTAAATATGTTTTTA
 GACACAATGATGGCTGACCTCCTCCCAAGTGCCTTGTCTGGCTACCTCTCATGCACAGGCTTGCCCATG
 TTGAGAATGTCTTCCATCCCGTGGAGTGCTCCTACTGCCGATGTGAGAGTATGATGGGTTTCCGGTACCG
 ATGCCAGCAGTGCCACAATATCAGCTCTGCCAGAATTGCTTTTGGCGTGGCCATGCCGCGGCCCTCAC
 AGCAACCAGCACCAGATGAAGGAGCATTCTCTTGAAATCTCCTGCAAAGAAGCTGAGCCATGCAATTA
 GTAATCTTTGGGGTGTGTACCCACGAGAGAACCCCGCATCTGTTTTTCTGAGCAACCAGAGAAACC
 ACTTGACCTTGCACATATAGTTCTCTCGCCCTGACTAATATGAATGACACCATGGTTAGCCACATG
 TCCTCTGGAGTGCCCACTCCCAACAGAGTGTCTGGACAGTCTAGCCGACTGGATGAGGAACACCGTC
 TTATAGCTCGCTATGCTGCCCGCTGGCTGCAGAAGCAGGAAACGTGACTCGTCTCCACTGAGTTGAG
 CTTTAACCTTGTGCAACAACAACAAGACAGCTTATTGCAAGACTGGAACAACAAAACAGAGAGATC
 CTGCAGGAGATTACGCTCTCCGCTGGAACACGAGCAGGCTCCAGCCACCCCTGAGAAGGCACAGC
 AGAACCCACGCTGCTGGCAGAGCTGCGGCTGCTGAGGCAAAGGAAGGATGAACTGGAGCAGAGGATGTC
 GGCCCTGCAGGAGAGCAGGCGGGAGCTGATGGTCCAGCTGGAAGAGCTGATGAAGTTGCTGAAGGCTCAG
 GCCACAGGTCACCACATACATCGCCACCCATGGAGGCGGCCGCAATGCCATGCCAGTGGCTCCA
 CGTCTGCCGCTCACCCCACTGCTCCGAGGACTCGCTGAGCGGAGTCGGGGGAGACGTGCAGGA
 GGCTTCGCACAAGCAGAGGAAGGTGCAGAGGAAGAAGAAGAGATGCAGAATGGAAAGACAGAGGT

ACGCGTACGCGGCCGCTCGAGCAGAAACTCATCTCAGAAGAGGATCTGGCAGCAAATGATATCCTGGATT
 ACAAGGATGACGACGATAAGGTTTAA

Protein Sequence:

>RC203798 protein sequence
 Red=Cloning site Green=Tags(s)

MIEESGNKRKTMAEKRQLFIEMRAQNFDVIRLSTYRTACKLRFVQKRCNLHLVDIWNMIEAFRDNGLNLT
 DHTTEISVSRLTVISSIYYQLNKRLPSTHQISVEQISLILLNFMIAYDSEGRGKLTVFSVKAMLATMC
 GKMLDKLRYVFSQMSDSNGLMIFSKFDQFLKEVLKLPATVFEGPSFGYTEHSVRTCFPQQRKIMLNMFL
 DTMADPPPQCLVWLPLMHLAHLAVENVFHPVECSYCRCEMMGFYRQCQCHNYQLCQNCFWRGHAGGPH
 SNQHQMKESHSSWKSPAKKLSHAISKSLGCVPTREPPHPVFPEQPEKPLDLAHI VPPRPLTNMNDTMVSHM
 SSGVPTPTKSVLDSPSRLDEEHLIARYAARLAAEAGNVTRPPTDL SFNFDANKQQRQLIAELENKNREI
 LQEIQLRLEHEQASQPTPEKAQQNPTLLAELRLLRQRKDELEQRMSALQESRRELMVQLEELMKLLKAQ
 ATGSPHTSPTHGGRRPMPVPRSTSAGSTPTHCPQDSL SGVGGDVQEAFAQAEEGAEEMKQNGKDRG

TRTRPLEQKLISEEDLAANDILDYKDDDDKV

Chromatograms:

https://cdn.origene.com/chromatograms/mk6303_a06.zip

Restriction Sites:

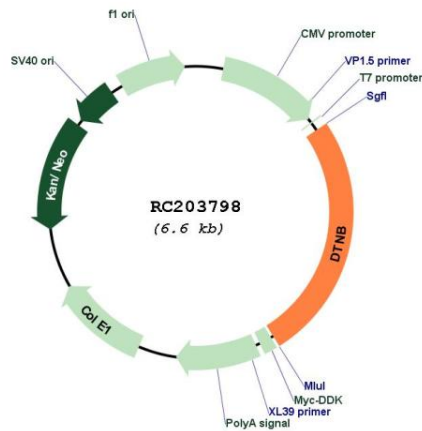
Sgfl-Mlul

Cytogenetics: 2p23.3

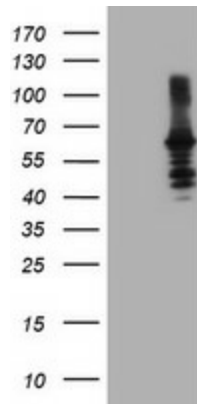
MW: 63.8 kDa

Gene Summary: This gene encodes dystrobrevin beta, a component of the dystrophin-associated protein complex (DPC). The DPC consists of dystrophin and several integral and peripheral membrane proteins, including dystroglycans, sarcoglycans, syntrophins and dystrobrevin alpha and beta. The DPC localizes to the sarcolemma and its disruption is associated with various forms of muscular dystrophy. Dystrobrevin beta is thought to interact with syntrophin and the DP71 short form of dystrophin. [provided by RefSeq, Mar 2016]

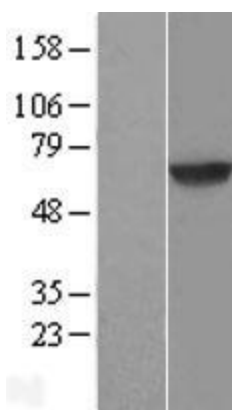
Product images:



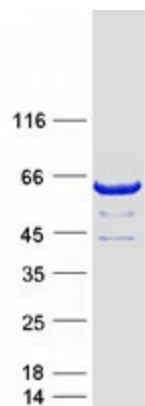
Circular map for RC203798



HEK293T cells were transfected with the pCMV6-ENTRY control (Cat# [PS100001], Left lane) or pCMV6-ENTRY DTNB (Cat# RC203798, Right lane) cDNA for 48 hrs and lysed. Equivalent amounts of cell lysates (5 ug per lane) were separated by SDS-PAGE and immunoblotted with anti-DTNB (Cat# [TA504326]). Positive lysates [LY405251] (100ug) and [LC405251] (20ug) can be purchased separately from OriGene.



Western blot validation of overexpression lysate (Cat# [LY405251]) using anti-DDK antibody (Cat# [TA50011-100]). Left: Cell lysates from untransfected HEK293T cells; Right: Cell lysates from HEK293T cells transfected with RC203798 using transfection reagent MegaTran 2.0 (Cat# [TT210002]).



Coomassie blue staining of purified DTNB protein (Cat# [TP303798]). The protein was produced from HEK293T cells transfected with DTNB cDNA clone (Cat# RC203798) using MegaTran 2.0 (Cat# [TT210002]).