

## Product datasheet for **RC203792**

### **TOX1 (TOX) (NM\_014729) Human Tagged ORF Clone**

#### **Product data:**

Product Type:	Expression Plasmids
Product Name:	TOX1 (TOX) (NM_014729) Human Tagged ORF Clone
Tag:	Myc-DDK
Symbol:	TOX1
Synonyms:	TOX1
Mammalian Cell Selection:	Neomycin
Vector:	pCMV6-Entry (PS100001)
E. coli Selection:	Kanamycin (25 ug/mL)



[View online »](#)

**ORF Nucleotide Sequence:**

>RC203792 ORF sequence  
 Red=Cloning site Blue=ORF Green=Tags(s)

TTTTGTAATACGACTCACTATAGGGCGGCCGGAATTCGTCGACTGGATCCGGTACCGAGGAGATCTGCC  
 GCC**GCGATCGCC**

ATGGACGTAAGATTTTATCCACCTGTAGCCAGCCCGCCGCTGCGCCGACGCTCCCTGTCTGGACCTT  
 CTCCTGCCTGGACCCCTACTATTGCAACAAGTTTGACGGTGAGAACATGTATATGAGCATGACAGAGCC  
 GAGCCAGGACTATGTGCCAGCCAGCCAGTCTACCCTGGTCCAAGCCTGAAAGTGAAGACTTCAACATT  
 CCACCAATTACTCCTCCTCCCTCCCAGACCACTCGCTGGTGCACCTGAATGAAGTTGAGTCTGGTTACC  
 ATTCTCTGTGTACCCCATGAACCATAATGGCCTGCTACCATTTCCATCCACAAAACATGGACCTCCCTGA  
 AATCACAGTCTCCAATATGCTGGGCCAGGATGGAACACTGCTTTCTAATTCATTCTGTGATGCCAGAT  
 ATACGAAACCCAGAAGGAACCTAGTACAGTTCCTCCTCAGATGGCAGCCATGAGACCAAGGGGCCAGC  
 CTGCAGACATCAGGCAGCAGCCAGGAATGATGCCACATGGCCAGCTGACTACCATTAACCACTCACAGT  
 AAGTGCTCAACTTGGTTTGAATATGGGAGGAAGCAATGTTCCCCACAACCTACCATCTCCACCTGGAAGC  
 AAGTCTGCAACTCCTTACCATCCAGTTAGTGCATGAAGATGAAGGCGATGATACCTCTAAGATCAATG  
 GTGGAGAGAAGCGGCCTGCCTCTGATATGGGAAAAAACAAAACTCCCAAAAAGAAGAAGAAGAGGA  
 TCCCAATGAGCCCGAGAAGCCTGTGTCTGCCTATGCGTTATTCTTTCTGTGATACTCAGGCCGCCATCAAG  
 GGCCAAAATCCAAACGCTACCTTTGGCGAAGTCTCTAAAATTGTGGCTTCAATGTGGGACGGTTTAGGAG  
 AAGAGCAAAAACAGGTCTATAAAAAGAAAACCGAGGCTGCGAAGAAGGAGTACCTGAAGCAACTCGCAGC  
 ATACAGAGCCAGCCTTGATCCAAGAGCTACAGTGAACCTGTTGACGTGAAGACATCTCAACCTCCTCAG  
 CTGATCAATTGAAAGCCGTCGGTGTCCATGGGCCAGCCAGGCCACTCGGCCCTGTACCTAAGTTCCC  
 ACTATCACCAACAACCGGAATGAATCCTCACCTAACTGCCATGCATCCTAGTCTCCCAGGAACATAGC  
 CCCAAGCCGAATAACCAAAATGCCAGTACTGTCTCTATAGCAAAACATGGCTGTGCCCTCCTCCTCCC  
 CTCAGATCAGCCCGCCTCTTACCAGCATCTCAACATGCAGCAGCACCAGCCGCTCACCATGCAGCAGC  
 CCCTTGGGAACCAGTCCCATGCAGGTCCAGTCTGCCTTACACTCACCCACCATGCAGCAAGGATTTAC  
 TCTTCAACCCGACTATCAGACTATTATCAATCCTACATCTACAGTGCACAAGTTGTACCCAGGCAATG  
 GAGTATGTGCGTTCGGGGTGCAGAAATCCTCCCCACAACCGGTGGACTGGAATAACGACTACTGCAGTA  
 GTGGGGCATGCAGAGGGACAAAGCACTGTACCTACT

**ACGCGT**ACGCGGCCGCTCGAGCAGAAACTCATCTCAGAAGAGGATCTGGCAGCAAATGATATCCTGGATT  
 ACAAGGATGACGACGATAAGGTTTAA

**Protein Sequence:**

>RC203792 protein sequence  
 Red=Cloning site Green=Tags(s)

MDVRFYPPVAQPAAPDAPCLGPSCLDPYYCNKFDGENMYMSMTEPSQDYVPASQSYPGPSLESEDFNI  
 PPITPPSLPDHSLVHLNEVESGYHSLCHPMNHNGLLPFHPQNMDLPEITVSNMLGQDGTLLSNSISVMPD  
 IRNPEGTYSSHPQMAAMRPRGQPADIRQQPGMMPHGQLTTINQSQLSAQLGLNMGGSNVPHNSPSPPGS  
 KSATPSPSSSVHEDEGDDTSKINGGEKRPASDMGKPKTPKPKKPKDPNEPQKPVSAAYLFFRDTQAAIK  
 GQNPNAFGEVSKIVASMWDLGEEQKQVYKKTEAAKKEYLKQLAAYRASLVSKSYSEPVDVKTSQPPQ  
 LINSKPSVFHGPSQAHSALYLSHYHQQPGMNPHTAMHPSLPRNIAPKPNQMPVTVSIANMAVSPPPP  
 LQISPLHQHLNMQQHQPLTMQQPLGNQLPMQVQSALHSPTMQQGFTLQPDYQTIINPTSTAAQVVTQAM  
 EYVRSGRNPPQFVDWNNDYCSSGGMQRDKALYLT

**TRTRPLEQKLI**SEEDLAANDILDYKDDDDKV

**Chromatograms:**

[https://cdn.origene.com/chromatograms/mk6538\\_f08.zip](https://cdn.origene.com/chromatograms/mk6538_f08.zip)

**Restriction Sites:**

Sgfl-Mlul

**Cloning Scheme:**


**ACCN:** NM\_014729

**ORF Size:** 1578 bp

**OTI Disclaimer:** The molecular sequence of this clone aligns with the gene accession number as a point of reference only. However, individual transcript sequences of the same gene can differ through naturally occurring variations (e.g. polymorphisms), each with its own valid existence. This clone is substantially in agreement with the reference, but a complete review of all prevailing variants is recommended prior to use. [More info](#)

**OTI Annotation:** This clone was engineered to express the complete ORF with an expression tag. Expression varies depending on the nature of the gene.

**Components:** The ORF clone is ion-exchange column purified and shipped in a 2D barcoded Matrix tube containing 10ug of transfection-ready, dried plasmid DNA (reconstitute with 100 ul of water).

- Reconstitution Method:**
1. Centrifuge at 5,000xg for 5min.
  2. Carefully open the tube and add 100ul of sterile water to dissolve the DNA.
  3. Close the tube and incubate for 10 minutes at room temperature.
  4. Briefly vortex the tube and then do a quick spin (less than 5000xg) to concentrate the liquid at the bottom.
  5. Store the suspended plasmid at -20°C. The DNA is stable for at least one year from date of shipping when stored at -20°C.

**Note:** Plasmids are not sterile. For experiments where strict sterility is required, filtration with 0.22um filter is required.

**RefSeq:** [NM\\_014729.3](#)

**RefSeq Size:** 4131 bp

**RefSeq ORF:** 1581 bp

**Locus ID:** 9760

UniProt ID: [O94900](#)

Cytogenetics: 8q12.1

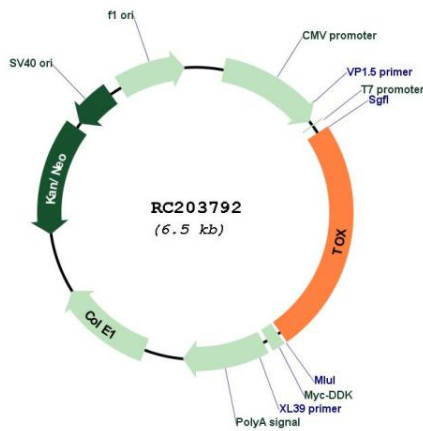
Domains: HMG

Protein Families: Transcription Factors

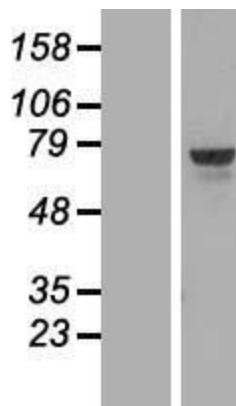
MW: 57.5 kDa

Gene Summary: The protein encoded by this gene contains a HMG box DNA binding domain. HMG boxes are found in many eukaryotic proteins involved in chromatin assembly, transcription and replication. This protein may function to regulate T-cell development.[provided by RefSeq, Apr 2009]

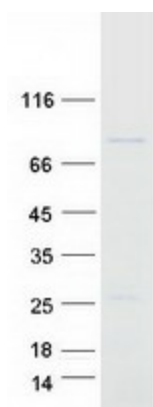
### Product images:



Circular map for RC203792



Western blot validation of overexpression lysate (Cat# [LY415101]) using anti-DDK antibody (Cat# [TA50011-100]). Left: Cell lysates from untransfected HEK293T cells; Right: Cell lysates from HEK293T cells transfected with RC203792 using transfection reagent MegaTran 2.0 (Cat# [TT210002]).



Coomassie blue staining of purified TOX protein (Cat# [TP303792]). The protein was produced from HEK293T cells transfected with TOX cDNA clone (Cat# RC203792) using MegaTran 2.0 (Cat# [TT210002]).