

Product datasheet for **RC203789**

MCP4 (CCL13) (NM_005408) Human Tagged ORF Clone

Product data:

Product Type: Expression Plasmids
Product Name: MCP4 (CCL13) (NM_005408) Human Tagged ORF Clone
Tag: Myc-DDK
Symbol: MCP4
Synonyms: CKb10; MCP-4; NCC-1; NCC1; SCYA13; SCYL1
Mammalian Cell Selection: Neomycin
Vector: pCMV6-Entry (PS100001)
E. coli Selection: Kanamycin (25 ug/mL)
ORF Nucleotide Sequence: >RC203789 ORF sequence
Red=Cloning site Blue=ORF Green=Tags(s)

TTTTGTAATACGACTCACTATAGGGCGCCGGGAATTCGTCGACTGGATCCGGTACCGAGGAGATCTGCC
GCC**CGATCGCC**

ATGAAAGTCTCTGCAGTGCTTCTGTGCCTGCTGCTCATGACAGCAGCTTCAACCCAGGGACTTGCTC
AGCCAGATGCACTCAACGTCCCCTACTTGTGCTTACATTTAGCAGTAAGAAGATCTCCTTGCAGAG
GCTGAAGAGCTATGTGATCACCACCAGCAGGTGTCCCAGAAGGCTGTCATCTTCAGAACCAAACTGGGC
AAGGAGATCTGTGCTGACCCAAAGGAGAAGTGGGTCCAGAATTATGAAACACCTGGCCGGAAAGCTC
ACACCTGAAGACT

ACGCGTACGCGGCCGCTCGAGCAGAAACTCATCTCAGAAGAGGATCTGGCAGCAAATGATATCCTGGATT
ACAAGGATGACGACGATAAGGTTTAA

Protein Sequence: >RC203789 protein sequence
Red=Cloning site Green=Tags(s)
MKVSAVLLCLLLMTAAFNPQGLAQPDALNVPSTCCFTFSSKISLQRLKSYVITTSRCPQKAVIFRTKLG
KEICADPKEKWVQNYMKHLGRKAHTLKT

TRTRPLEQKLISEEDLAANDILDYKDDDDKV

Chromatograms: https://cdn.origene.com/chromatograms/mk6301_d10.zip

Restriction Sites: SgfI-MluI



[View online »](#)

Cloning Scheme:


ACCN: NM_005408

ORF Size: 294 bp

OTI Disclaimer: The molecular sequence of this clone aligns with the gene accession number as a point of reference only. However, individual transcript sequences of the same gene can differ through naturally occurring variations (e.g. polymorphisms), each with its own valid existence. This clone is substantially in agreement with the reference, but a complete review of all prevailing variants is recommended prior to use. [More info](#)

OTI Annotation: This clone was engineered to express the complete ORF with an expression tag. Expression varies depending on the nature of the gene.

Components: The ORF clone is ion-exchange column purified and shipped in a 2D barcoded Matrix tube containing 10ug of transfection-ready, dried plasmid DNA (reconstitute with 100 ul of water).

- Reconstitution Method:**
1. Centrifuge at 5,000xg for 5min.
 2. Carefully open the tube and add 100ul of sterile water to dissolve the DNA.
 3. Close the tube and incubate for 10 minutes at room temperature.
 4. Briefly vortex the tube and then do a quick spin (less than 5000xg) to concentrate the liquid at the bottom.
 5. Store the suspended plasmid at -20°C. The DNA is stable for at least one year from date of shipping when stored at -20°C.

RefSeq: [NM_005408.3](#)

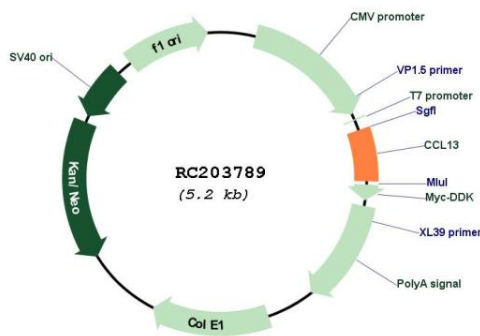
RefSeq Size: 861 bp

RefSeq ORF: 297 bp

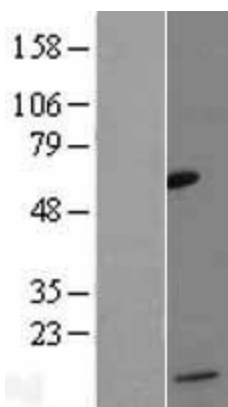
Locus ID: 6357

UniProt ID: [Q99616](#)
Cytogenetics: 17q12
Protein Families: Druggable Genome, Secreted Protein
Protein Pathways: Chemokine signaling pathway, Cytokine-cytokine receptor interaction, NOD-like receptor signaling pathway
MW: 11 kDa
Gene Summary: This antimicrobial gene is one of several Cys-Cys (CC) cytokine genes clustered on the q-arm of chromosome 17. Cytokines are a family of secreted proteins involved in immunoregulatory and inflammatory processes. The CC cytokines are proteins characterized by two adjacent cysteines. The cytokine encoded by this gene displays chemotactic activity for monocytes, lymphocytes, basophils and eosinophils, but not neutrophils. This chemokine plays a role in accumulation of leukocytes during inflammation. It may also be involved in the recruitment of monocytes into the arterial wall during atherosclerosis. [provided by RefSeq, Sep 2014]

Product images:



Circular map for RC203789



Western blot validation of overexpression lysate (Cat# [LY417327]) using anti-DDK antibody (Cat# [TA50011-100]). Left: Cell lysates from untransfected HEK293T cells; Right: Cell lysates from HEK293T cells transfected with RC203789 using transfection reagent MegaTran 2.0 (Cat# [TT210002]).