

Product datasheet for **RC203788**

PSTPIP1 (NM_003978) Human Tagged ORF Clone

Product data:

Product Type:	Expression Plasmids
Product Name:	PSTPIP1 (NM_003978) Human Tagged ORF Clone
Tag:	Myc-DDK
Symbol:	PSTPIP1
Synonyms:	CD2BP1; CD2BP1L; CD2BP1S; H-PIP; PAPAS; PSTPIP
Mammalian Cell Selection:	Neomycin
Vector:	pCMV6-Entry (PS100001)
E. coli Selection:	Kanamycin (25 ug/mL)
ORF Nucleotide Sequence:	>RC203788 ORF sequence Red=Cloning site Blue=ORF Green=Tags(s)

TTTTGTAATACGACTCACTATAGGGCGGCCGGAATTCGTCGACTGGATCCGGTACCGAGGAGATCTGCC
GCC**CGATCGCC**

ATGATGCCCCAGCTGCAGTTCAAAGATGCCTTTTGGTGCAGGGACTTCACAGCCACACGGGCTACGAGG
TGCTGCTGCAGCGGCTTCTGGATGGCAGGAAGATGTGCAAAGACATGGAGGAGCTACTGAGGCAGAGGGC
CCAGGCGGAGGAGCGGTACGGGAAGGAGCTGGTGCAGATCGCACGGAAGGCAGGTGGCCAGACGGAGATC
AACTCCCTGAGGGCCTCCTTTGACTCCTTGAAGCAGCAAATGGAGAATGTGGGCAGCTCACACATCCAGC
TGGCCCTGACCCTGCGTGAGGAGCTGCGGAGTCTCGAGGAGTTTCGTGAGAGGCAGAAGGAGCAGAGGAA
GAAGTATGAGGCCGTCATGGACCGGTCCAGAAGAGCAAGCTGTGCTCTACAAGAAGGCCATGGAGTCC
AAGAAGACATACGAGCAGAAGTCCGGGACGCGGACGACGCGGAGCAGGCCTTCGAGCGCATTAGCGCCA
ACGGCCACCAGAAGCAGGTGGAGAAGAGTCAGAACAAAGCCAGGCAGTGAAGGACTCGGCCACCGAGGC
AGAGCGGGTATACAGGCAGAGCATTGCGCAGCTGGAGAAGGTCCGGGCTGAGTGGGAGCAGGAGCACCGG
ACCACCTGTGAGGCCTTTCAGCTGCAAGAGTTTGACCGGCTGACCATTCTCCGCAACGCCCTGTGGGTGC
ACAGCAACCAGCTCTCCATGCAGTGTGTCAAGGATGATGAGCTCTACGAGGAAGTCCGGCTGACGCTGGA
AGGCTGCAGCATAGACGCCGACATCGACAGTTTCATCCAGGCCAAGAGCACGGGCACAGACCCCCCGCT
CCGGTGCCCTACCAGAACTATTACGATCGGGAGGTACCCCGCTGACCAGCAGCCCTGGCATAACAGCCGT
CCTGCGGCATGATAAAGAGGTTCTCTGGACTGCTGCACGGAAGTCCCAAGACCACTTCGTTGGCAGCTTC
TGCTGCGTCCACAGAGACCCTGACCCCCACCCCGAGCGGAATGAGGGTGTCTACACAGCCATCGCAGTG
CAGGAGATACAGGAAACCCGGCCTCACCAGCCAGGAGTACCGGGCGCTCTACGATTATACAGCGCAGA
ACCCAGATGAGCTGGACCTGTCCGCGGAGACATCCTGGAGGTGATCCTGGAAGGGGAGGATGGCTGGT
GACTGTGGAGAGGAACGGGCAGCGTGGCTTCGTCCTGGTTCTACCTGGAGAAGCTT

ACGCGTACGCGGCCGCTCGAGCAGAACTCATCTCAGAAGAGGATCTGGCAGCAAATGATATCCTGGATT
ACAAGGATGACGACGATAAGGTTTAA



[View online »](#)

Protein Sequence: >RC203788 protein sequence
Red=Cloning site Green=Tags(s)

MMPQLQFKDAFWCRDFTAHTGYEVLLQRLLDGRKMCKDMEELLRQRAQAEERYGKELVQIARKAGGQTEI
 NSLRASFDLQKQMMENVGSSHIQLALTLREELRSLLEEFRRERQKEQRKKYEAVMDRVQKSKLSLYKKAMES
 KKTYEQKCRDADDAEQAFERISANGHQKQVEKSSQNKARQCKDSATEAERVYRQSIQLEKVVRAEWEQEHR
 TTCEAFQLQEFDRILTILRNALWVHSNQLSMQCVDDELVEEYVRLTEGCSIDADIDSFIQAKSTGTEPPA
 PVPYQNYVDREVPLTSSPGIQPCGMIKRFSGLLHGSPKTTSLAASAATETLTPTPERNEGVYTAIAV
 QEIQGNPASPQAEYRALDYDTAQNPDELDSLQAGDILEVILEGEDGWWTVERNGQRFVPGSYLEKL

TRTRPLEQKLISEEDLAANDILDYKDDDDKV

Chromatograms: https://cdn.origene.com/chromatograms/mk6301_d08.zip

Restriction Sites: SgfI-MluI

Cloning Scheme:



ACCN: NM_003978

ORF Size: 1248 bp

OTI Disclaimer: The molecular sequence of this clone aligns with the gene accession number as a point of reference only. However, individual transcript sequences of the same gene can differ through naturally occurring variations (e.g. polymorphisms), each with its own valid existence. This clone is substantially in agreement with the reference, but a complete review of all prevailing variants is recommended prior to use. [More info](#)

OTI Annotation: This clone was engineered to express the complete ORF with an expression tag. Expression varies depending on the nature of the gene.

Components: The ORF clone is ion-exchange column purified and shipped in a 2D barcoded Matrix tube containing 10ug of transfection-ready, dried plasmid DNA (reconstitute with 100 ul of water).

Reconstitution Method:

1. Centrifuge at 5,000xg for 5min.
2. Carefully open the tube and add 100ul of sterile water to dissolve the DNA.
3. Close the tube and incubate for 10 minutes at room temperature.
4. Briefly vortex the tube and then do a quick spin (less than 5000xg) to concentrate the liquid at the bottom.
5. Store the suspended plasmid at -20°C. The DNA is stable for at least one year from date of shipping when stored at -20°C.

RefSeq: [NM_003978.5](#)

RefSeq Size: 1870 bp

RefSeq ORF: 1251 bp

Locus ID: 9051

UniProt ID: [O43586](#)

Cytogenetics: 15q24.3

Domains: FCH, SH3

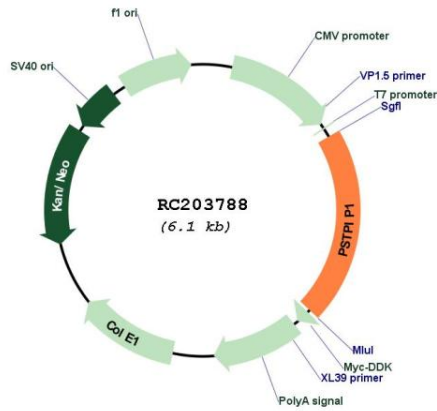
Protein Families: Druggable Genome

Protein Pathways: NOD-like receptor signaling pathway

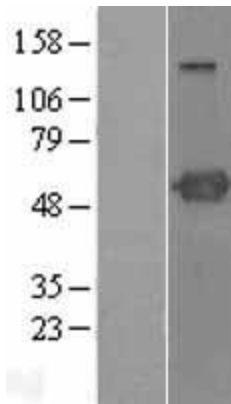
MW: 47.6 kDa

Gene Summary: This gene encodes a cytoskeletal protein that is highly expressed in hemopoietic tissues. This protein functions via its interaction with several different proteins involved in cytoskeletal organization and inflammatory processes. It binds to the cytoplasmic tail of CD2, an effector of T cell activation and adhesion, downregulating CD2-triggered adhesion. It binds PEST-type protein tyrosine phosphatases (PTP) and directs them to c-Abl kinase to mediate c-Abl dephosphorylation, thereby, regulating c-Abl activity. It also interacts with pyrin, which is found in association with the cytoskeleton in myeloid/monocytic cells and modulates immunoregulatory functions. Mutations in this gene are associated with PAPA (pyogenic sterile arthritis, pyoderma gangrenosum, and acne) syndrome. It is hypothesized that the disease-causing mutations compromise physiologic signaling necessary for the maintenance of a proper inflammatory response. [provided by RefSeq, Mar 2016]

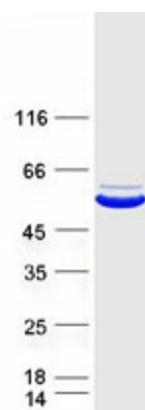
Product images:



Circular map for RC203788



Western blot validation of overexpression lysate (Cat# [LY418260]) using anti-DDK antibody (Cat# [TA50011-100]). Left: Cell lysates from untransfected HEK293T cells; Right: Cell lysates from HEK293T cells transfected with RC203788 using transfection reagent MegaTran 2.0 (Cat# [TT210002]).



Coomassie blue staining of purified PSTPIP1 protein (Cat# [TP303788]). The protein was produced from HEK293T cells transfected with PSTPIP1 cDNA clone (Cat# RC203788) using MegaTran 2.0 (Cat# [TT210002]).