

Product datasheet for **RC203783**

Transportin 1 (TNPO1) (NM_153188) Human Tagged ORF Clone

Product data:

Product Type:	Expression Plasmids
Product Name:	Transportin 1 (TNPO1) (NM_153188) Human Tagged ORF Clone
Tag:	Myc-DDK
Symbol:	Transportin 1
Synonyms:	IPO2; KPNB2; MIP; MIP1; TRN
Mammalian Cell Selection:	Neomycin
Vector:	pCMV6-Entry (PS100001)
E. coli Selection:	Kanamycin (25 ug/mL)



[View online »](#)

ORF Nucleotide Sequence:

>RC203783 representing NM_153188
 Red=Cloning site Blue=ORF Green=Tags(s)

TTTTGTAATACGACTCACTATAGGGCGGCCGGAATTCGTCGACTGGATCCGGTACCGAGGAGATCTGCC
 GCC**CGCATCGCC**

ATGGAGTATGAGTGGAACTGACGAGCAAGGGCTTCAGCAAATCCTGCAGCTGTTGAAGGAGTCCCAGT
 CCCAGACACCACCATCCAGAGAACCGTCAACAAAACTGGAACAACTTAATCAGTATCCAGACTTTAA
 CAACTACTTGATTTTTGTTCTTACAAAAATAAAATCTGAAGATGAACCCACAAGATCATTGAGTGGTCTT
 ATCTTGAAGAATAATGTGAAAGCACACTTTCAGAACTCCCAAATGGTGTAAACAGACTTTATAAAAGTG
 AATGTTTAAATAATATTGGTGACTCCTCTCCTCTGATTAGAGCCACTGTTGGTATTTTGATCACAATAT
 AGCCTCCAAGGGAGAATTGCAGAATTGGCCTGACCTCTTACAAAACTCTGTAGCCTGTTGGATTCTGAA
 GATTATAACCTGTGAGGGAGCATTGGTGCCCTTCAGAAGATTTGTGAAGATTCTGCTGAGATTTAG
 ACAGTGATGTTTTAGATCGTCTCTCAACATCATGATCCCAAATTTTACAGTTCTTCAAGCATAGTAG
 TCCAAAAATAAGGTCTCACGCTGTGCATGTGCAATCAGTTTATCATCAGTAGGACTCAAGCTCTAATG
 TTGCACATTGATCTTTTATTGAGAATCTTTGCATTAGCTGGTGTGAAGAACCAGAGGTACGGAAAA
 ATGTGTGCCGAGCACTTGTGATGTTGCTCGAAGTTCGAATGGATCGCCTGCTTCCACATGCATAATAT
 AGTTGAGTACATGCTACAGAGGACTCAAGATCAAGATGAAAATGTGGCTTTAGAAGCCTGTGAATTTGG
 CTAACCTTAGCTGAACAGCCAATATGCAAAGATGTACTCGTAAGGCATCTTCTAAGTTGATTCCTGTGT
 TAGTGAATGGCATGAAGTACTCAGACATAGATATTATCTACTTAAGGGTGTGTTGAAGAAGACGAAAC
 GATTCCTGATAGTGAACAGGATATACGGCCACGTTTTACCGATCGAGGACGGTGGCTCAGCAGCATGAT
 GAAGATGGAATTGAAGAGGAAGATGATGATGATGAAATTGATGATGATGATACAATTTCTGACTGGA
 ATCTAAGAAAAATGTTCTGCTGCTGCCCTGGATGTTCTTGCAAATGTGTATCGTGATGAATGCTGCCACA
 TATTTTGGCCCTTTTGAAGAATACTTTTTTCATCATGAATGGGTGTTAAAGAATCAGGCATTTTGGTT
 TTAGGAGCAATTGCTGAAGTTCATGCAGGGCATGATCCATACTTGCCTGAGCTTATTCTCACCTTA
 TTCAGTGCCTCTCTGATAAAAAGGCTCTTGTGCGTTCATAACATGCTGGACTCTTAGCCGCTATGCACA
 CTGGGTGGTCAGCCAGCCGCCAGACACGTACCTGAAGCCATTAATGACAGAATTGCTAAAGCGCATCCTG
 GACAGCAACAAGAGAGTACAAGAAGCTGCCTGCAGTGCCTTTGCTACCCTAGAAGAGGAGGCTTGTACAG
 AACTTGTCTTACCTTGCTTATATACTTGATACCCTGGTCTTTGCATTTAGTAAATACCAGCATAAGAA
 CCTGCTCATTCTTACGATGCCATAGGAACATTAGCAGATTAGTGGACATCATTTAAACAAACCAGAA
 TATATTCAGATGCTAATGCCTCCACTGATCCAGAAATGGAACATGTTAAAGGATGAAGATAAAGATCTCT
 TCCTTTACTTGAGTGCCTATCTTCAGTTGCCACAGCACTGCAGTCTGGATTCTTCCGACTGTGAACC
 TGTGTATCAGCGTTGTGTAACCTAGTACAGAAGACTCTTGCACAAGCCATGCTAAACAATGCTCAACCA
 GATCAATATGAAGCTCCAGATAAAGATTTATGATAGTGGCTCTTGATTTACTGAGTGGCCTGGCTGAAG
 GACTTGGAGGCAACATTGAACAGCTGGTAGCCGAAGTAAACATCCTGACACTAATGTATCAGTGCATGCA
 GGATAAAATGCCAGAAGTTCGACAGAGTCTTTTGGCCCTGTTAGGTGACCTCACAAAAGCTTGTCTTCAG
 CATGTTAAGCCTTGATAGCTGATTTTATGCCAATATTGGGAACCAACCTAAATCCAGAATTCATTTGAG
 TCTGCAACAATGCCACATGGGCAATTGGAGAAATCTCCATTCAAATGGGTATAGAGATGCAGCCTTATAT
 TCCTATGGTGTGACCAGCTTGTAGAAATCATTAAACAGACCCAAACACCAAGACGTTGTTAGAGAAT
 ACAGCAATAACAATTGGTCGCTTGGTTACGTTTGTCTCAAGAGGTGGCCCCATGCTACAGCAGTTTA
 TAAGACCTGGTGCACCTCTCTGAGAAACATAAGAGACAATGAGGAAAAGGATTCAGCATTCCGTGGAAT
 TTGTACCATGATCAGTGTGAATCCAGTGGCGTAATCCAAGATTTTATATTTTTTTGTGATGCCGTTGCA
 TCATGGATTAACCCAAAAGATGATCTCAGAGACATGTTCTGTAAGATCCTTCATGGATTTAAAAATCAAG
 TTGGCGATGAAAATTGGAGGCGTTTCTCTGACCAGTTTCTCTTCCCTTAAAGAGCGTCTTGCAGCTTT
 TTATGGTGT

ACGCGTACGCGGCCGCTCGAGCAGAACTCATCTCAGAAGAGGATCTGGCAGCAAATGATATCCTGGATT
 ACAAGGATGACGACGATAAGGTTTAA

Protein Sequence: >RC203783 representing NM_153188
 Red=Cloning site Green=Tags(s)

```
MEYEWKPDEQGLQQILQLLKEQSQSPDTTIQRVQKLEQLNQYPDFNNYLIFVLTKLKESEDEPTRLSGL
ILKNNVKAHFQNFQNGVDFIKSECLNNIGDSSPLIRATVGILITTIASKGELQNWPDLLPKLCSLLDSE
DYNTCEGAFGALQKICEDSAEILDSVLDRLNIMIPKFLQFFKHSSPKIRSHAVACVNQFIISRTQALM
LHIDSF IENL FALAGDEEPEVRKNVCRALVMLLEVRMDRLLPHMHNIVEYMLQRTQDQDENVALEACEFW
LT LAEQPICKDVLVRHLPKLIPLVLVNGMKYSDIDIILLKGDVEEDETIPDSEQDIRPRFHRSRVTAQQHD
EDGIEEEDDDDEIDDDDTISDWNLRKCSAAALDVLANVYRDELLPHILPLLKELLFHHEWVYKESGILV
LGAI AEGCMQGMIPYLP E L I P H L I Q C L S D K K A L V R S I T C W T L S R Y A H W V S Q P P D T Y L K P L M T E L L K R I L
D S N K R V Q E A A C S A F A T L E E E A C T E L V P Y L A Y I L D T L V F A F S K Y Q H K N L L I L Y D A I G T L A D S V G H H L N K P E
Y I Q M L M P P L I Q K W N M L K D E D K D L F P L L E C L S S V A T A L Q S G F L P Y C E P V Y Q R C V N L V Q K T L A Q A M L N N A Q P
D Q Y E A P D K D F M I V A L D L L S G L A E G L G G N I E Q L V A R S N I L T L M Y Q C M Q D K M P E V R Q S S F A L L G D L T K A C F Q
H V K P C I A D F M P I L G T N L N P E F I S V C N N A T W A I G E I S I Q M G I E M Q P Y I P M V L H Q L V E I I N R N P T P K T L L E N
T A I T I G R L G Y V C P Q E V A P M L Q Q F I R P W C T S L R N I R D N E E K D S A F R G I C T M I S V N P S G V I Q D F I F F C D A V A
S W I N P K D D L R D M F C K I L H G F K N Q V G D E N W R R F S D Q F P L P L K E R L A A F Y G V
```

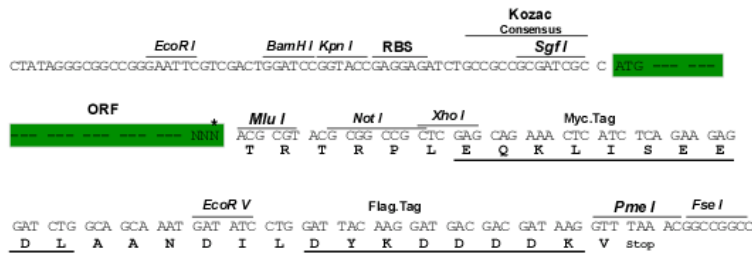
TRTRPLEQKLISEEDLAANDILDYKDDDDKV

Chromatograms: https://cdn.origene.com/chromatograms/ja3481_c04.zip

Restriction Sites: SgfI-MluI

Cloning Scheme:

Cloning sites used for ORF Shuttling:



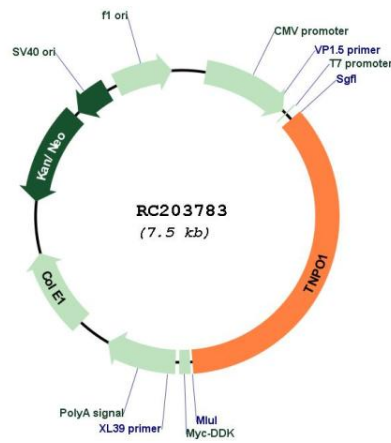
* The last codon before the Stop codon of the ORF

ACCN: NM_153188

ORF Size:	2670 bp
OTI Disclaimer:	<p>Due to the inherent nature of this plasmid, standard methods to replicate additional amounts of DNA in E. coli are highly likely to result in mutations and/or rearrangements. Therefore, OriGene does not guarantee the capability to replicate this plasmid DNA. Additional amounts of DNA can be purchased from OriGene with batch-specific, full-sequence verification at a reduced cost. Please contact our customer care team at custsupport@origene.com or by calling 301.340.3188 option 3 for pricing and delivery.</p> <p>The molecular sequence of this clone aligns with the gene accession number as a point of reference only. However, individual transcript sequences of the same gene can differ through naturally occurring variations (e.g. polymorphisms), each with its own valid existence. This clone is substantially in agreement with the reference, but a complete review of all prevailing variants is recommended prior to use. More info</p>
OTI Annotation:	This clone was engineered to express the complete ORF with an expression tag. Expression varies depending on the nature of the gene.
Components:	The ORF clone is ion-exchange column purified and shipped in a 2D barcoded Matrix tube containing 10ug of transfection-ready, dried plasmid DNA (reconstitute with 100 ul of water).
Reconstitution Method:	<ol style="list-style-type: none"> 1. Centrifuge at 5,000xg for 5min. 2. Carefully open the tube and add 100ul of sterile water to dissolve the DNA. 3. Close the tube and incubate for 10 minutes at room temperature. 4. Briefly vortex the tube and then do a quick spin (less than 5000xg) to concentrate the liquid at the bottom. 5. Store the suspended plasmid at -20°C. The DNA is stable for at least one year from date of shipping when stored at -20°C.
RefSeq:	NM_153188.3
RefSeq Size:	8546 bp
RefSeq ORF:	2673 bp
Locus ID:	3842
UniProt ID:	Q92973
Cytogenetics:	5q13.2
Domains:	Armadillo_seg, IBN_NT
Protein Families:	Druggable Genome
MW:	101.3 kDa

Gene Summary:

This gene encodes the beta subunit of the karyopherin receptor complex which interacts with nuclear localization signals to target nuclear proteins to the nucleus. The karyopherin receptor complex is a heterodimer of an alpha subunit which recognizes the nuclear localization signal and a beta subunit which docks the complex at nucleoporins. Alternate splicing of this gene results in several transcript variants encoding different proteins. [provided by RefSeq, Jun 2018]

Product images:


Circular map for RC203783