

Product datasheet for **RC203780**

Pleckstrin (PLEK) (NM_002664) Human Tagged ORF Clone

Product data:

Product Type:	Expression Plasmids
Product Name:	Pleckstrin (PLEK) (NM_002664) Human Tagged ORF Clone
Tag:	Myc-DDK
Symbol:	Pleckstrin
Synonyms:	P47
Mammalian Cell Selection:	Neomycin
Vector:	pCMV6-Entry (PS100001)
E. coli Selection:	Kanamycin (25 ug/mL)
ORF Nucleotide Sequence:	>RC203780 ORF sequence Red=Cloning site Blue=ORF Green=Tags(s)

TTTTGTAATACGACTCACTATAGGGCGCCGGGAATTCGTCGACTGGATCCGGTACCGAGGAGATCTGCC
GCC**CGATCGCC**

ATGGAACCAAAGCGGATCAGAGAGGGCTACCTTGTGAAGAAGGGGAGCGTGTTCAATACGTGAAACCCA
TGTGGTTGTATTGTTAGAAGATGGAATTGAATTCTATAAGAAGAAAAGTGACAACAGCCCCAAAGGAAT
GATCCCGCTGAAAGGGAGCACTGACTAGCCCTTGCAAGACTTTGGCAAAGGATGTTTGTGTTAAG
ATCACTACGACCAAACAGCAGGACCACTTCTCCAGGCAGCCTTCTGGAGGAGAGAGATGCCTGGGTTCC
GGGATATCAAGAAGGCCATTAATGCATTGAAGGAGGCCAGAAATTTGCCAGGAAATCTACCAGGAGGTC
CATTTCGACTGCCAGAAACCACTGACTTAGGTGCCTTATATTTGCCATGAAAGACACTGAAAAGGAATA
AAAGAAGTGAATCTAGAGAAGGACAAGAAGATTTTAATCACTGCTTCACAGGTAACCTGCCTCATTGATT
GGCTGGTATCCAACCACTGCTGTTAGGAATCGCCAGGAAGGCCTCATGATTGCTTCATCGCTGCTCAATGA
GGGGTATCTGCAGCCTGCTGGAGACATGTCCAAGAGTGCAGTGGATGGAAGTGCCTGAAAACCTTTCCTG
GACAACCTGATGCCTTCTACTACTTTCCAGACAGTGGGTTCTTCTGTGAAGAGAATCCAGTGATGATG
ATGTGATTCTGAAAGAAGAATTCAGAGGGGTCAATATCAAGCAGGGATGTTTACTGAAGCAGGGGCATAG
AAGGAAAACCTGGAAGTGAAGGAAATTCATCTTGAGAGAAGACCTGCCTACCTGCACTACTATGACCT
GCTGGGGCAGAAGATCCCCTGGGAGCAATTCATTGAGAGGCTGTGGTGAATTCAGTGGAGAGCAACT
CAAATGGCAGGAAGAGTGAAGGAAGAGAACCTTTTTGAGATCATCACAGCAGATGAAGTGCATTTTCTT
GCAAGCAGCCACCCCAAGGAGCGCACAGAGTGGATCAAAGCCATCCAGATGGCCTCCCGAACTGGGAAG

ACGCGTACGCGGCCGCTCGAGCAGAAACTCATCTCAGAAGAGGATCTGGCAGCAATGATATCCTGGATT
ACAAGGATGACGACGATAAGGTTTAA



[View online »](#)

Protein Sequence: >RC203780 protein sequence
Red=Cloning site Green=Tags(s)

MEPKRIREGYLVKKGSVFNTWKPMWVLLLEDGIEFYKKKSDNSPKGMIPLKGSTLTSPCQDFGKRMFVFK
 ITTTKQDHFQAAFLEERDAWVRDIKKAIKCIEGGQKFARKSTRRSIRLPETIDL GAL YLSMKDTEKGI
 KELNLEKDKKIFNHCFTGNCVIDWLVSNSQSVRNROEGLMIASSLLNEGYPAGDMSKSAVDGTAENPFL
 DNPDAFYYPDSGFFCEENSDDDDVILKEEFRGVIKQGCLLKQGHRRKNWVVKF ILREDPAYLHYYDP
 AGAEDPLGAIHLRGCVVTSVESNSNGR KSEENLFEIIT ADEVHYFLQAATPKERTEWIKAIQMASRTGK

TRTRPLEQKLISEEDLAANDILDYKDDDDKV

Chromatograms: https://cdn.origene.com/chromatograms/mk6310_d05.zip

Restriction Sites: SgfI-MluI

Cloning Scheme:



ACCN: NM_002664

ORF Size: 1050 bp

OTI Disclaimer: The molecular sequence of this clone aligns with the gene accession number as a point of reference only. However, individual transcript sequences of the same gene can differ through naturally occurring variations (e.g. polymorphisms), each with its own valid existence. This clone is substantially in agreement with the reference, but a complete review of all prevailing variants is recommended prior to use. [More info](#)

OTI Annotation: This clone was engineered to express the complete ORF with an expression tag. Expression varies depending on the nature of the gene.

Components: The ORF clone is ion-exchange column purified and shipped in a 2D barcoded Matrix tube containing 10ug of transfection-ready, dried plasmid DNA (reconstitute with 100 ul of water).

Reconstitution Method:

1. Centrifuge at 5,000xg for 5min.
2. Carefully open the tube and add 100ul of sterile water to dissolve the DNA.
3. Close the tube and incubate for 10 minutes at room temperature.
4. Briefly vortex the tube and then do a quick spin (less than 5000xg) to concentrate the liquid at the bottom.
5. Store the suspended plasmid at -20°C. The DNA is stable for at least one year from date of shipping when stored at -20°C.

Note: Plasmids are not sterile. For experiments where strict sterility is required, filtration with 0.22um filter is required.

RefSeq: [NM_002664.3](#)

RefSeq Size: 2866 bp

RefSeq ORF: 1053 bp

Locus ID: 5341

UniProt ID: [P08567](#)

Cytogenetics: 2p14

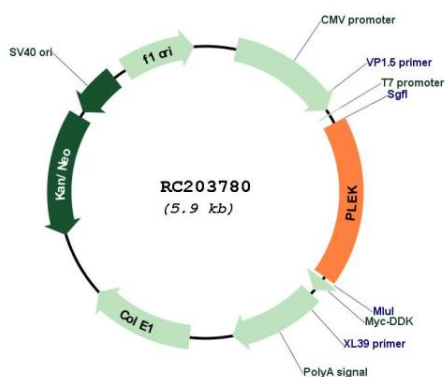
Domains: DEP, PH

Protein Families: Druggable Genome

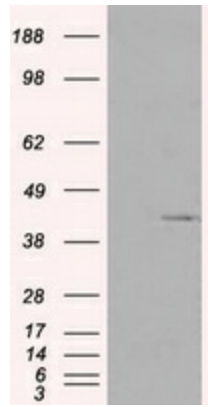
MW: 40.1 kDa

Gene Summary: Major protein kinase C substrate of platelets.[UniProtKB/Swiss-Prot Function]

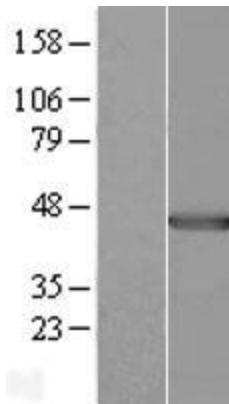
Product images:



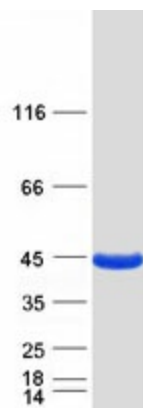
Circular map for RC203780



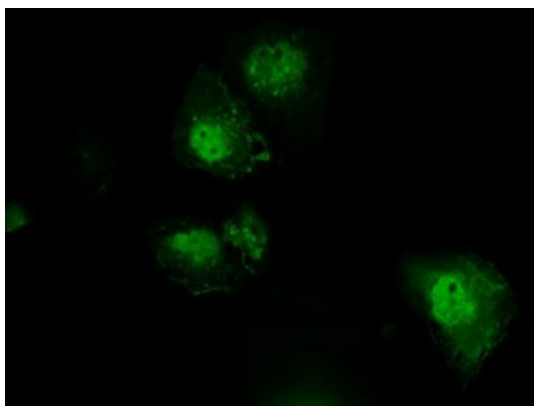
HEK293T cells were transfected with the pCMV6-ENTRY control (Cat# [PS100001], Left lane) or pCMV6-ENTRY PLEK (Cat# RC203780, Right lane) cDNA for 48 hrs and lysed. Equivalent amounts of cell lysates (5 ug per lane) were separated by SDS-PAGE and immunoblotted with anti-PLEK (Cat# [TA500902]). Positive lysates [LY419171] (100ug) and [LC419171] (20ug) can be purchased separately from OriGene.



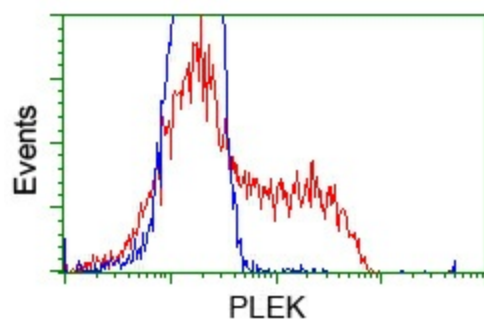
Western blot validation of overexpression lysate (Cat# [LY419171]) using anti-DDK antibody (Cat# [TA50011-100]). Left: Cell lysates from untransfected HEK293T cells; Right: Cell lysates from HEK293T cells transfected with RC203780 using transfection reagent MegaTran 2.0 (Cat# [TT210002]).



Coomassie blue staining of purified PLEK protein (Cat# [TP303780]). The protein was produced from HEK293T cells transfected with PLEK cDNA clone (Cat# RC203780) using MegaTran 2.0 (Cat# [TT210002]).



Anti-PLEK mouse monoclonal antibody ([TA500902]) immunofluorescent staining of COS7 cells transiently transfected by pCMV6-ENTRY PLEK (RC203780).



HEK293T cells transfected with either pCMV6-ENTRY PLEK (RC203780) (Red) or empty vector control plasmid (Blue) were immunostained with anti-PLEK mouse monoclonal ([TA500902]), and then analyzed by flow cytometry.