

## Product datasheet for **RC203776**

### CDw75 (ST6GAL1) (NM\_173216) Human Tagged ORF Clone

#### Product data:

|                           |   |
|---------------------------|---|
| Product Type:             | Expression Plasmids   |
| Product Name:             | CDw75 (ST6GAL1) (NM_173216) Human Tagged ORF Clone                |
| Tag:                      | Myc-DDK   |
| Symbol:                   | CDw75   |
| Synonyms:                 | SIAT1; ST6Gall; ST6N  |
| Mammalian Cell Selection: | Neomycin  |
| Vector:                   | pCMV6-Entry (PS100001)  |
| E. coli Selection:        | Kanamycin (25 ug/mL)  |
| ORF Nucleotide Sequence:  | >RC203776 ORF sequence<br>Red=Cloning site Blue=ORF Green=Tags(s) |

TTTTGTAATACGACTCACTATAGGGCGGCCGGAATTCGTCGACTGGATCCGGTACCGAGGAGATCTGCC  
GCC**CGATCGCC**

ATGATTACACCAACCTGAAGAAAAAGTTCAGCTGCTGCGTCCTGGTCTTTCTTCTGTTTGCAGTCATCT  
GTGTGTGGAAGGAAAAGAAGAAAGGGAGTTACTATGATTCCTTTAAATTGCAAACCAAGGAATCCAGGT  
GTTAAAGAGTCTGGGAAATTGGCCATGGGGTCTGATCCAGTCTGTATCCTCAAGCAGCACCCAGGAC  
CCCCACAGGGGCCGACACCCCTCGGCAGTCTCAGAGGCCAGCCAAGGCCAAACAGAGGCCTCCTTCC  
AGGTGTGGAACAAGGACAGCTCTCCAAAAACCTTATCCCTAGGCTGCAAAGATCTGGAAGAATTACCT  
AAGCATGAACAAGTACAAAGTGTCTACAAGGGGCCAGGACCAGGCATCAAGTTCAGTGCAGAGGCCCTG  
CGCTGCCACCTCCGGGACCATGTGAATGTATCCATGGTAGAGGTCACAGATTTTCCCTTCAATACCTCTG  
AATGGGAGGGTTATCTGCCCAAGGAGAGCATTAGGACCAAGGCTGGGCTTGGGGCAGGTGTGCTGTTGT  
GTCGTGAGCGGGATCTCTGAAGTCTCCCAACTAGGCAGAGAAAATCGATGATCATGACGCAGTCTGAGG  
TTAATGGGGCACCCACAGCCAACCTCCAACAAGATGTGGGCACAAAACTACCATTGCGCTGATGAACT  
CTCAGTTGGTTACCACAGAGAAGCGCTTCTCAAAGACAGTTTGTACAATGAAGGAATCCTAATTGTATG  
GGACCCATCTGTATACCACTCAGATATCCCAAAGTGGTACCAGAATCCGGATTATAATTTCTTTAATAAC  
TACAAGACTTATCGTAAGCTGCACCCCAATCAGCCCTTTTACATCCTCAAGCCCCAGATGCCTTGGGAGC  
TATGGGACATTCTTCAAGAAATCTCCCCAGAAGAGATTACGCCAAACCCCATCCTCTGGGATGCTTGG  
TATCATCATGATGACGCTGTGTGACCAGGTGGATATTTATGAGTTTCTCCATCCAAGCGCAAGACT  
GACGTGTGCTACTACTACCAGAAGTTCTTCGATAGTGCCTGCACGATGGGTGCCTACCACCCGCTGCTCT  
ATGAGAAGAATTTGGTGAAGCATCTCAACCAGGGCACAGATGAGGACATCTACCTGCTTGGAAAAGCCAC  
ACTGCCTGGCTTCCGGACCATTCACTGC

**ACGCGT**ACGCGGCCGCTCGAGCAGAACTCATCTCAGAAGAGGATCTGGCAGCAAATGATATCCTGGATT  
ACAAGGATGACGACGATAAGGTTTAA



**Protein Sequence:** >RC203776 protein sequence  
Red=Cloning site Green=Tags(s)

MIHTNLKKKFSCCVLVFLFAVICVWKEKKKGSYYDSFKLQTKFQVLKSLGKLAGMSDSQSVSSSSTQD  
 PHRGRQTLGSLRGLAKAKPEASFQVWNKDSSSKNLI PRLQKIWKNYLSMNKYKVSYKGPGPGIKFSAEAL  
 RCHLRDHVNVSMVEVTDFFPNTSEWEGYLPKESIRTKAGPWGRCVAVSSAGSLKSSQLGREIDDHDAVLR  
 FNGAPTANFQQDVGTKTTIRLMNSQLVTEKRFKDSL YNEGILIVWDPSVYHSDIPKWYQNPDYNFNN  
 YKTYRKLHPNQPFYILKQMPWELWDILQEISPEEI QPNPPSSGMLGIIIMMTLCDQVDIYEFLPSCRKT  
 DVCYYYQKFFDSACTMGAYHPLL YEKNLVKHLNQGTDEDIYLLGKATLPGFRTIHC

TRTRPLEQKLISEEDLAANDILDYKDDDDKV

**Chromatograms:** [https://cdn.origene.com/chromatograms/mk6147\\_g11.zip](https://cdn.origene.com/chromatograms/mk6147_g11.zip)

**Restriction Sites:** SgfI-MluI

**Cloning Scheme:**



\* The last codon before the Stop codon of the ORF

**ACCN:** NM\_173216

**ORF Size:** 1218 bp

**OTI Disclaimer:** The molecular sequence of this clone aligns with the gene accession number as a point of reference only. However, individual transcript sequences of the same gene can differ through naturally occurring variations (e.g. polymorphisms), each with its own valid existence. This clone is substantially in agreement with the reference, but a complete review of all prevailing variants is recommended prior to use. [More info](#)

**OTI Annotation:** This clone was engineered to express the complete ORF with an expression tag. Expression varies depending on the nature of the gene.

**Components:** The ORF clone is ion-exchange column purified and shipped in a 2D barcoded Matrix tube containing 10ug of transfection-ready, dried plasmid DNA (reconstitute with 100 ul of water).

**Reconstitution Method:**

1. Centrifuge at 5,000xg for 5min.
2. Carefully open the tube and add 100ul of sterile water to dissolve the DNA.
3. Close the tube and incubate for 10 minutes at room temperature.
4. Briefly vortex the tube and then do a quick spin (less than 5000xg) to concentrate the liquid at the bottom.
5. Store the suspended plasmid at -20°C. The DNA is stable for at least one year from date of shipping when stored at -20°C.

**Note:** Plasmids are not sterile. For experiments where strict sterility is required, filtration with 0.22um filter is required.

**RefSeq:** [NM\\_173216.2](#)

**RefSeq Size:** 4604 bp

**RefSeq ORF:** 1221 bp

**Locus ID:** 6480

**UniProt ID:** [P15907](#)

**Cytogenetics:** 3q27.3

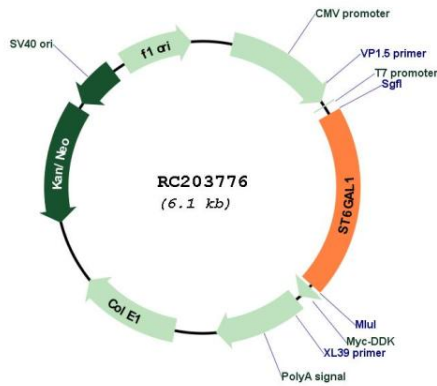
**Protein Families:** Secreted Protein

**Protein Pathways:** Metabolic pathways, N-Glycan biosynthesis

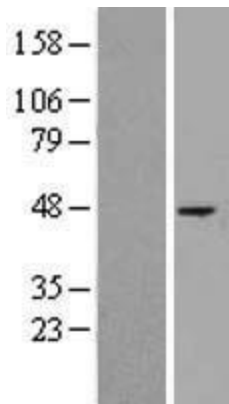
**MW:** 46.6 kDa

**Gene Summary:** This gene encodes a member of glycosyltransferase family 29. The encoded protein is a type II membrane protein that catalyzes the transfer of sialic acid from CMP-sialic acid to galactose-containing substrates. The protein, which is normally found in the Golgi but can be proteolytically processed to a soluble form, is involved in the generation of the cell-surface carbohydrate determinants and differentiation antigens HB-6, CD75, and CD76. This gene has been incorrectly referred to as CD75. Alternative splicing results in multiple transcript variants. [provided by RefSeq, Jul 2017]

Product images:



Circular map for RC203776



Western blot validation of overexpression lysate (Cat# [LY403548]) using anti-DDK antibody (Cat# [TA50011-100]). Left: Cell lysates from untransfected HEK293T cells; Right: Cell lysates from HEK293T cells transfected with RC203776 using transfection reagent MegaTran 2.0 (Cat# [TT210002]).