

## Product datasheet for **RC203774**

### SMRC2 (SMARCC2) (NM\_139067) Human Tagged ORF Clone

#### Product data:

Product Type:	Expression Plasmids
Product Name:	SMRC2 (SMARCC2) (NM_139067) Human Tagged ORF Clone
Tag:	Myc-DDK
Symbol:	SMRC2
Synonyms:	BAF170; CRACC2; CSS8; Rsc8
Mammalian Cell Selection:	Neomycin
Vector:	pCMV6-Entry (PS100001)
E. coli Selection:	Kanamycin (25 ug/mL)
ORF Nucleotide Sequence:	>RC203774 ORF sequence Red=Cloning site Blue=ORF Green=Tags(s)

TTTTGTAATACGACTCACTATAGGGCGGCCGGAATTCGTCGACTGGATCCGGTACCGAGGAGATCTGCC  
GCC**CGATCGCC**

ATGGCGGTGCGGAAGAAGGACGGCGGCCCAACGTGAAGTACTACGAGGCCGGACACCGTGACCCAGT  
TCGACAACGTGCGGCTGTGGCTCGGCAAGAACAACAAGAAGTATACAAGCTGAACCACCCACCAACA  
GTCCCTGTCTAGCCTGGTGTACAGTTGCTACAATTTTCAGGAAGAAGTTTTGGCAAACATGTCAGCAAT  
GCACCGCTCACTAACTGCCGATCAAATGTTTCCTAGATTTCAAAGCGGGAGGCTCCTTGTGCCACATTC  
TTGCAGCTGCCTACAAATTCAGAGTGACCAGGGATGGCGCGTACGATTTCCAGAATCCATCAGCAT  
GGACCGCAATGTGAAATGTTTATGACCATTGAGAAGTCCTTGGTGCAGAATAATTGCCTGTCTCGACCT  
AACATTTTTCTGTGCCAGAAATGAGCCAACTACTAGGAAATTAAGGACATTATCAAGAGACACC  
AGGGAACAGTCACTGAGGATAAAGAACAATGCCTCCCATGTTGTGTATCCTGTCCCGGGAATCTAGAAGA  
AGAGGAATGGGTACGACCAGTCAAGAAGGGATAAGCAGGTTCTTCTGCACTGGGGTACTATCCTGAC  
AGTTACGACACGTGGATCCCAGCGAGTGAATGAGGCATCTGTGGAAGATGCTCCAACCTCTGAGAAAC  
CTAGGAAGGTTTCATGCAAAGTGGATCCTGGACACCGACACCTTCAATGAATGGATGAATGAGGAAGACTA  
TGAAGTAAATGATGACAAAAACCTGTCTCCCGCCGAAAGAAGATTTTCAGCCAAGACACTGACAGATGAG  
GTGAACAGCCAGATTCAGATCGACGGGCAAGAAGGGGGAACTATAAGAAGAGGAAGCGCTCCCTCCT  
CTCCTTACCAACCCAGAAAGCAAGAAGAAAAATGCTAAGAAAGTCCCTCAACACCTTACACTAAGTC  
AAAGCGTGGCCACAGAGAAGAGGAGCAAGAAGACCTGACAAAGGACATGGACGAGCCCTACCAGTCCCC  
AATGTAGAAGAGGTGACACTTCCCAAAACAGTCAACACAAGAAAGACTCAGAGTCGGCCCCAGTCAAAG  
GCGGCACCATGACCGACCTGGATGAACAGGAAGATGAAAGCATGGAGACGACGGGCAAGGATGAGGATGA  
GAACAGTACGGGAAACAAGGGAGAGCAGACCAAGAATCCAGACCTGCATGAGGACAATGTGACTGAACAG  
ACCCACCACATCATCTCCAGCTACGCTGCCTGGTTTGACTACAATAGTGTTCATGCCATTGAGCGGA  
GGGCTCTCCCGAGTCTTCAACGGCAAGAACAAGTCCAAGACTCCAGAGATCTACCTGGCCTATCGAAA  
CTTTATGATTGACTTACCGACTGAACCCCAAGAGTATCTTACCTTACCGCCTGCCCGGAAACCTA



[View online >](#)

GCGGGTGATGTCTGTGCCATCATGAGGGTCCATGCCTTCCTAGAACAGTGGGGTCTTATTAACACCAGG  
TGGATGCTGAGAGTCGACCAACCCCAATGGGGCCTCCGCCTACCTCTCACTTCCATGTCTTGGTGACAC  
ACCATCAGGGCTGGTGCCTCTGCAGCCCAAGACACCTCAGGGCCGCCAGGTTGATGTGATACCAAGGCT  
GGGCGAAAGGGCAAAGAGCTGGATGACCTGGTCCAGAGACGGCTAAGGGCAAGCCAGAGCTGCAGACCT  
CTGCTTCCCAACAAATGCTCACTTTCTGACAAAGGCAAAGAGAAACCAACAGACATGCAAACTTTGG  
GCTGCGCACAGACATGTACACAAAAAGAATGTTCCCTCCAAGAGCAAGGCTGCAGCCAGTGCCACTCGT  
GAGTGGACAGAACAGGAAACCCCTGCTTCTCCTGGAGGCACTGGAATGTACAAAGATGACTGGAACAAAG  
TGTCCGAGCATGTGGGAAGCCGCACACAGGACGAGTGCATCTTGCAATTTCTTCGTCTTCCATTGAAGA  
CCCATACTGGAGGACTCAGAGGCTCCCTAGGCCCTGGCCTACCAACCCATCCCCTCAGTCAGTCG  
GGCAACCTGTTATGAGCACTGTTGCCTTCTGGCCTCTGTCGTGATCCCCGAGTCGCCTCTGCTGCTG  
CAAAGTCAGCCCTAGAGGAGTTCTCAAATGAAGGAAGAGGTACCCACGGCCTTGGTGGAGGCCATGT  
TCGAAAAGTGGAGAAGCAGCCAAAGTAACAGGCAAGGCGGACCTGCCTTCGGTCTGGAAGCAGTGCC  
ATTGCAGAACCCCTCTGATGAGCCTGAGCGGATTGAGGAGAGCGGGAATGACGAGGCTCGGTGGAAG  
GCCAGGCCACAGATGAGAAGAAGGAGCCAAAGGAACCCGAGAAGGAGGGGTGCTATAGAGGAGGAAGC  
AAAAGAGAAAACAGCGAGGCTCCAAGAAGGATGAGGAGAAAGGAAAGAGGCGACAGTGAGAAGGAG  
TCCGAGAAGAGTGATGGAGACCCAATAGTCGATCCTGAGAAGGAGAAGGACCAAGGAAGGGCAGGAGG  
AAGTGCTGAAGGAAGTGGTGGAGTCTGAGGGGAAAGGAAGACAAAGGTGGAGCGGGACATTGGCGAGGG  
CAACCTCTCCACCGCTGCTGCCGCCCTGGCCGCCCGCAGTGAAAGCTAAGCACTTTGCTGCTGTT  
GAGGAAAGGAAGATCAAATCTTTGGTGGCCCTGCTGGTGGAGACCAGATGAAAAAGTTGGAGATCAAAC  
TTCGGCACTTTGAGGAGCTGGAGACTATCATGGACCGGAGCGAGAAGCACTGGAGTATCAGAGGCAGCA  
GCTCCTGGCCGACAGACAAGCCTTCCACATGGAGCAGCTGAAGTATGCGGAGATGAGGGCTCGGCAGCAG  
CACTTCCAACAGATGCACCAACAGCAGCAGCAGCCACCAGCCCTGCCCCAGGCTCCCAGCCTATCC  
CCCCAACAGGGGCTGCTGGGCCACCCGAGTCCATGGCTTGGCTGTGGCTCCAGCCTCTGTAGTCCCTGC  
TCCTGCTGGCAGTGGGGCCCTCCAGGAAGTTTGGGCCCTTCTGAACAGATTGGGCAGGCAGGGTCAACT  
GCAGGGCCACAGCAGCAGCAACCAGCTGGAGCCCCCAGCCTGGGGCAGTCCCACCAGGGTTCCCCC  
CTGGACCCATGGCCCTCACCGTTCCCAACCAAACTCCTCCCTCAATGATGCCAGGGGAGTGCC  
AGGCAGCGGGCACCCAGGCGTGGCGGACCCAGGCACCCCTGCCTCCAGACCCACAGCCCGAGCCCA  
GGCAGGTCACCCCTGTGCCACCTCCACAG

ACGGTACGCGGCCGCTCGAGCAGAACTCATCTCAGAAGAGGATCTGGCAGCAATGATATCCTGGATT  
ACAAGGATGACGACGATAAGGTTTAA

**Protein Sequence:** >RC203774 protein sequence  
Red=Cloning site Green=Tags(s)

```
MAVRKKDGGPNVKYYEAAADTVTQFDNVRLWLGNKYKYYIQAEPTNKSLSSLVVQLLQFQEEVFGKHVSN
APLTKLPIKCFDFKAGGSLCHILAAAYKFKSDQGWRRYDFQNP SRMDRNVEMFTIEKSLVQNCLSRP
NIFLCPEIEPKLLGKLDIKRHQGTVTEDKNNASHVVYPVPGNLEEEWVRPVMKRDKQVLLHWGYYPD
SYDTWIPASEIEASVEDAPTPEKPRKVHAKWILD TDFNEWMNEEDYEVNDDKNPVSRKKISAKLTDE
VNSPDSDRRDKKGGNYKKRKRSPSPSTPEAKKNAKKG PSTPYTKSKRGHREEEQEDLTKDMDEPSPVP
NVEEVTLPKTVNTKKDSEAPVKGGTMDLDEQEDES METTGKDEDENSTGNKGEQTKNPD LHEDNVTEQ
THHIIIPSYAAWFDYNSVHAIERRALPEFFNGKNKSKTPEIYLAYRNF MIDTYRLNPQEYLSTACRRNL
AGDVCAIMRVHAFLEQWGLINYQVDAESRPTPMGPPPTSHFHLVADTPSGLVPLQPKTPQGRQVDADTKA
GRKGKELDDLVPETAKGKPELQTSASQQLNFPDKGKEKPTDMQNFGLRTDMYTKKNVPSKSKAAASATR
EWTEQETLLLLLEALEMYKDDWNVSEHVGSR TQDECILHFLRLPIEDPYLEDSEASLGPLAYQPIPFSSQ
GNPVMSTVAFLASVVDPRVASAAAKSALEEF SKMKEEVP TAVEAHRKVEEA AVTGKADPAFGLSSG
IAGTTSDEPERIEESGNDEARVEGQATDEKKEPK EPREGGAIEEEAKEKTSEAPKKDEEKGEKDSEKE
SEKSDGDP IVDPEKEKEPKEGQEEVLKEVVESE GERKTKVERDIGENLSTAAAAALAAA AVKAKHFAAV
EERKIKSLVALLVETQMKLEIKLRHFEELETIMDRERE ALEYQRQQLLADRQAFHMEQLKYAEMRARQQ
HFQMMHQQQQPPALPPGSQIPPTGAAGPPAVHGLAVAPASVVPAPAGSGAPPGLPSEQIQAGST
AGPQQQQPAGAPQPGAVPPGVPVPPGPHGSPFPNQQT PPSMMPGAVPGSGHPGVADPGTLPDPDPTASP
GTVTPVPPPPQ
```

TRTRPLEQKLISEEDLAANDILDYKDDDDKV

**Chromatograms:** [https://cdn.origene.com/chromatograms/mk6263\\_c09.zip](https://cdn.origene.com/chromatograms/mk6263_c09.zip)

**Restriction Sites:** SgfI-MluI

**Cloning Scheme:**



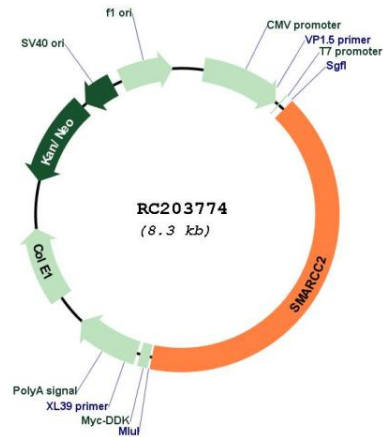
**ACCN:** NM\_139067

**ORF Size:** 3390 bp

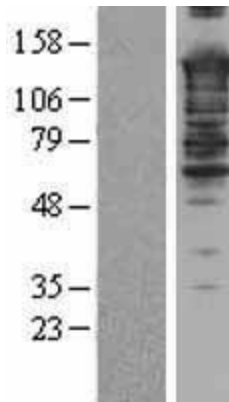
<b>OTI Disclaimer:</b>	<p>Due to the inherent nature of this plasmid, standard methods to replicate additional amounts of DNA in E. coli are highly likely to result in mutations and/or rearrangements. Therefore, OriGene does not guarantee the capability to replicate this plasmid DNA. Additional amounts of DNA can be purchased from OriGene with batch-specific, full-sequence verification at a reduced cost. Please contact our customer care team at <a href="mailto:custsupport@origene.com">custsupport@origene.com</a> or by calling 301.340.3188 option 3 for pricing and delivery.</p> <p>The molecular sequence of this clone aligns with the gene accession number as a point of reference only. However, individual transcript sequences of the same gene can differ through naturally occurring variations (e.g. polymorphisms), each with its own valid existence. This clone is substantially in agreement with the reference, but a complete review of all prevailing variants is recommended prior to use. <a href="#">More info</a></p>
<b>OTI Annotation:</b>	This clone was engineered to express the complete ORF with an expression tag. Expression varies depending on the nature of the gene.
<b>Components:</b>	The ORF clone is ion-exchange column purified and shipped in a 2D barcoded Matrix tube containing 10ug of transfection-ready, dried plasmid DNA (reconstitute with 100 ul of water).
<b>Reconstitution Method:</b>	<ol style="list-style-type: none"> <li>1. Centrifuge at 5,000xg for 5min.</li> <li>2. Carefully open the tube and add 100ul of sterile water to dissolve the DNA.</li> <li>3. Close the tube and incubate for 10 minutes at room temperature.</li> <li>4. Briefly vortex the tube and then do a quick spin (less than 5000xg) to concentrate the liquid at the bottom.</li> <li>5. Store the suspended plasmid at -20°C. The DNA is stable for at least one year from date of shipping when stored at -20°C.</li> </ol>
<b>Note:</b>	Plasmids are not sterile. For experiments where strict sterility is required, filtration with 0.22um filter is required.
<b>RefSeq:</b>	<a href="#">NM_139067.4</a>
<b>RefSeq Size:</b>	5336 bp
<b>RefSeq ORF:</b>	3393 bp
<b>Locus ID:</b>	6601
<b>UniProt ID:</b>	<a href="#">Q8TAQ2</a>
<b>Cytogenetics:</b>	12q13.2
<b>Domains:</b>	CHROMO, myb_DNA-binding, SWIRM
<b>Protein Families:</b>	Transcription Factors
<b>MW:</b>	124.9 kDa

**Gene Summary:**

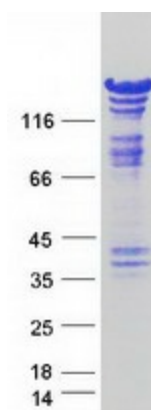
The protein encoded by this gene is a member of the SWI/SNF family of proteins, whose members display helicase and ATPase activities and which are thought to regulate transcription of certain genes by altering the chromatin structure around those genes. The encoded protein is part of the large ATP-dependent chromatin remodeling complex SNF/SWI and contains a predicted leucine zipper motif typical of many transcription factors. Alternatively spliced transcript variants encoding different isoforms have been found for this gene. [provided by RefSeq, Jul 2008]

**Product images:**


Circular map for RC203774



Western blot validation of overexpression lysate (Cat# [LY408410]) using anti-DDK antibody (Cat# [TA50011-100]). Left: Cell lysates from untransfected HEK293T cells; Right: Cell lysates from HEK293T cells transfected with RC203774 using transfection reagent MegaTran 2.0 (Cat# [TT210002]).



Coomassie blue staining of purified SMARCC2 protein (Cat# [TP303774]). The protein was produced from HEK293T cells transfected with SMARCC2 cDNA clone (Cat# RC203774) using MegaTran 2.0 (Cat# [TT210002]).