

Product datasheet for RC203769

CHI3L1 (NM_001276) Human Tagged ORF Clone

Product data:

Product Type:	Expression Plasmids
Product Name:	CHI3L1 (NM_001276) Human Tagged ORF Clone
Tag:	Myc-DDK
Symbol:	CHI3L1
Synonyms:	ASRT7; CGP-39; GP-39; GP39; HC-gp39; HCGP-3P; hCGP-39; YK-40; YKL-40; YKL40; YYL-40
Mammalian Cell Selection:	Neomycin
Vector:	pCMV6-Entry (PS100001)
E. coli Selection:	Kanamycin (25 ug/mL)
ORF Nucleotide Sequence:	>RC203769 ORF sequence Red=Cloning site Blue=ORF Green=Tags(s)

TTTTGTAATACGACTCACTATAGGGCGGCCGGAATTCGTCGACTGGATCCGGTACCGAGGAGATCTGCC
GCC**CGATCGCC**

ATGGGTGTGAAGGCGTCTCAAACAGGCTTTGTGGTCTGGTGCTGCTCCAGTGCTGCTGCATACAAAC
TGGTCTGCTACTACACCAGCTGGTCCCAGTACCGGAAGGCGATGGGAGCTGCTCCAGATGCCCTTGA
CCGCTTCTCTGTACCCACATCATCTACAGCTTTGCCAATAAAGCAACGATCACATCGACACCTGGGAG
TGAATGATGTGACGCTCTACGGCATGCTCAACACTCAAGAACAGGAACCCCAACCTGAAGACTCTCT
TGTCTGTCGGAGGATGGAACCTTTGGGTCTCAAAGATTTTCCAAGATAGCCTCCAACACCCAGAGTCGCC
GACTTTTCATCAAGTCAGTACCGCATTCTGCGCACCCATGGCTTTGATGGGCTGGACCTTGCTGGCTC
TACCCTGGACGGAGAGACAAACAGCATTACCACCTAATCAAGGAAATGAAGGCCGAATTTATAAAGG
AAGCCAGCCAGGAAAAAGCAGCTCCTGCTCAGCGCAGCACTGTCTGCGGGGAAGGTCACCATTGACAG
CAGCTATGACATTGCCAAGATACCCAACCTGGATTTCATTAGCATCATGACCTACGATTTTCATGGA
GCCTGGCGTGGGACCACAGGCCATCACAGTCCCCTGTTCCGAGGTGAGGAGGATGCAAGTCTGACAGAT
TCAGCAACTGACTATGCTGTGGGTACATGTTGAGGCTGGGGCTCCTGCCAGTAAGTGGTGATGGG
CATCCCCACCTTCGGGAGGAGCTTCACTCTGGCTTCTTCTGAGACTGGTGTGGAGCCCAATCTCAGGA
CCGGGAATTCAGGCGGTTACCAAGGAGGCAGGGACCCTTGCCTACTATGAGATCTGTGACTTCTCTCC
GCGGACCCAGTCCATAGAATCCTCGGCCAGCAGGTCCCCTATGCCACCAAGGGCAACCAAGTGGGTAGG
ATACGACGACCAGGAAAGCGTCAAAGCAAGGTGACAGTACCTGAAGGACAGGCAGCTGGCGGGCGCCATG
GTATGGGCCCTGGACCTGGATGACTTCCAGGGCTCCTTCTGCGGCCAGGATCTGCGCTTCCCTCTCACCA
ATGCCATCAAGGATGCACTCGTGCAACG

ACGCGTACGCGGCCGCTCGAGCAGAAACTCATCTCAGAAGAGGATCTGGCAGCAATGATATCCTGGATT
ACAAGGATGACGACGATAAGGTTTAA



[View online »](#)

Protein Sequence: >RC203769 protein sequence
Red=Cloning site Green=Tags(s)

MGVKASQTGFVVLVLLQCCSAYKLVCIYTSWSQYREGDGSCFPDALDRFLCTHIIYSFANISNDHIDTWE
WNDVTLYGMLNLTKNRPNLKTLLSVGGWNFGSQRFSKIASNTQSRRTFKSVPPFLRTHGFDGLDLAWL
YPGRRDKQHFTTLIKEMKAEFIKEAQP GKQLLLSAALSAGKVTIDSSYDIAKISQHLDFISIMTYDFHG
AWRGTGHHSPFLFRGQEDASPDFRSNTDYAVGYMLRLGAPASKLVMGIPTFGRSFTLASSETGVGAPI SG
PGIPGRFTKEAGTLAYYEICDFLRGATVHRILGQQVYPYATKGNQWVGYDDQESVKSKVQYLKDRQLAGAM
VWALDLDDFQGSFCGQDLRFPLTNAIKDALAAT

TRTRPLEQKLISEEDLAANDILDYKDDDDKV

Chromatograms: https://cdn.origene.com/chromatograms/mk6023_b09.zip

Restriction Sites: SgfI-MluI

Cloning Scheme:



* The last codon before the Stop codon of the ORF

ACCN: NM_001276

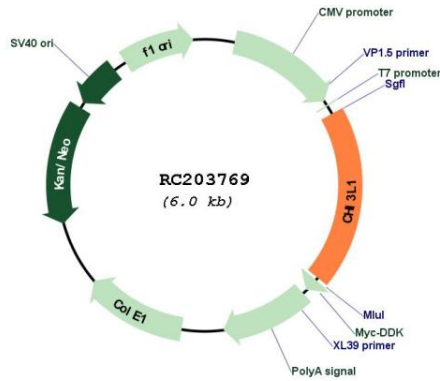
ORF Size: 1149 bp

OTI Disclaimer: Due to the inherent nature of this plasmid, standard methods to replicate additional amounts of DNA in E. coli are highly likely to result in mutations and/or rearrangements. Therefore, OriGene does not guarantee the capability to replicate this plasmid DNA. Additional amounts of DNA can be purchased from OriGene with batch-specific, full-sequence verification at a reduced cost. Please contact our customer care team at custsupport@origene.com or by calling 301.340.3188 option 3 for pricing and delivery.

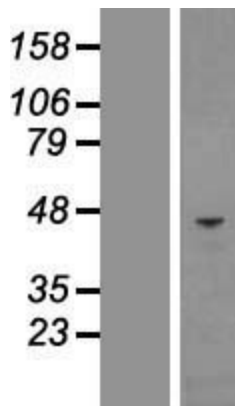
The molecular sequence of this clone aligns with the gene accession number as a point of reference only. However, individual transcript sequences of the same gene can differ through naturally occurring variations (e.g. polymorphisms), each with its own valid existence. This clone is substantially in agreement with the reference, but a complete review of all prevailing variants is recommended prior to use. [More info](#)

OTI Annotation:	This clone was engineered to express the complete ORF with an expression tag. Expression varies depending on the nature of the gene.
Components:	The ORF clone is ion-exchange column purified and shipped in a 2D barcoded Matrix tube containing 10ug of transfection-ready, dried plasmid DNA (reconstitute with 100 ul of water).
Reconstitution Method:	<ol style="list-style-type: none">1. Centrifuge at 5,000xg for 5min.2. Carefully open the tube and add 100ul of sterile water to dissolve the DNA.3. Close the tube and incubate for 10 minutes at room temperature.4. Briefly vortex the tube and then do a quick spin (less than 5000xg) to concentrate the liquid at the bottom.5. Store the suspended plasmid at -20°C. The DNA is stable for at least one year from date of shipping when stored at -20°C.
RefSeq:	NM_001276.3
RefSeq Size:	1867 bp
RefSeq ORF:	1152 bp
Locus ID:	1116
UniProt ID:	P36222
Cytogenetics:	1q32.1
Domains:	Glyco_18
Protein Families:	Secreted Protein
MW:	42.6 kDa
Gene Summary:	Chitinases catalyze the hydrolysis of chitin, which is an abundant glycopolymer found in insect exoskeletons and fungal cell walls. The glycoside hydrolase 18 family of chitinases includes eight human family members. This gene encodes a glycoprotein member of the glycosyl hydrolase 18 family. The protein lacks chitinase activity and is secreted by activated macrophages, chondrocytes, neutrophils and synovial cells. The protein is thought to play a role in the process of inflammation and tissue remodeling. [provided by RefSeq, Sep 2009]

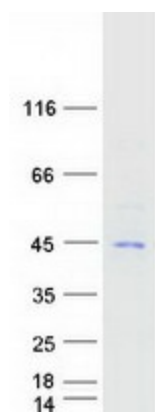
Product images:



Circular map for RC203769



Western blot validation of overexpression lysate (Cat# [LY420034]) using anti-DDK antibody (Cat# [TA50011-100]). Left: Cell lysates from untransfected HEK293T cells; Right: Cell lysates from HEK293T cells transfected with RC203769 using transfection reagent MegaTran 2.0 (Cat# [TT210002]).



Coomassie blue staining of purified CHI3L1 protein (Cat# [TP303769]). The protein was produced from HEK293T cells transfected with CHI3L1 cDNA clone (Cat# RC203769) using MegaTran 2.0 (Cat# [TT210002]).