

Product datasheet for **RC203766**

Lipoprotein lipase (LPL) (NM_000237) Human Tagged ORF Clone

Product data:

Product Type:	Expression Plasmids
Product Name:	Lipoprotein lipase (LPL) (NM_000237) Human Tagged ORF Clone
Tag:	Myc-DDK
Symbol:	Lipoprotein lipase
Synonyms:	HDLCQ11; LIPD
Mammalian Cell Selection:	Neomycin
Vector:	pCMV6-Entry (PS100001)
E. coli Selection:	Kanamycin (25 ug/mL)



[View online »](#)

ORF Nucleotide Sequence:

>RC203766 representing NM_000237
 Red=Cloning site Blue=ORF Green=Tags(s)

TTTTGTAATACGACTCACTATAGGGCGGCCGGGAATTCGTCGACTGGATCCGGTACCGAGGAGATCTGCC
 GCC**CGCATCGCC**

ATGGAGAGCAAAGCCCTGCTCGTCTGACTCTGGCCGTGGCTCCAGAGTCTGACCGCCTCCCGGGAG
 GGGTGGCCCGCCGACCAAGAAGAGATTTTATCGACATCGAAAGTAAATTTGCCCTAAGGACCCCTGA
 AGACACAGCTGAGGACACTTGCACCTCATTCCCGGAGTAGCAGAGTCCGTGGCTACCTGTCATTTCAAT
 CACAGCAGCAAAACCTTCATGGTGATCCATGGCTGGACGGTAACAGGAATGTATGAGAGTTGGTGCCAA
 AACTTTGTGGCCGCCCTGTACAAGAGAGAACCAGACTCCAATGTCATTGTGGTGGACTGGCTGTCACGGGC
 TCAGGAGCATTACCCAGTGTCCGCGGGCTACACCAAACCTGGTGGGACAGGATGTGGCCCGGTTTATCAAC
 TGGATGGAGGAGGAGTTAACTACCTCTGGACAATGTCCATCTCTTGGGATACAGCCTTGAGCCCATG
 CTGCTGGCATTGCAGGAAGTCTGACCAATAAGAAAGTCAACAGAATTACTGGCCTCGATCCAGCTGGACC
 TAACTTTGAGTATGCAGAAGCCCGAGTGTCTTTCTCCTGATGATGCAGATTTTGTAGAGCTCTTACAC
 ACATTCACCAGAGGGTCCCTGGTCAAGCATTGGAATCCAGAAACAGTTGGGCATGTTGACATTTACC
 CGAATGGAGGTACTTTTCAGCCAGGATGTAACTTTGGAGAAGCTATCCCGGTGATTGCAGAGAGAGGACT
 TGGAGATGTGGACCAGCTAGTGAAGTGCTCCCACGAGCGCTCCATTATCTCTTTCATCGACTCTCTGTTG
 AATGAAGAAAATCCAAGTAAAGCCCTACAGGTGCAGTTCCAAGGAAGCCTTTGAGAAAGGGCTCTGCTTGA
 GTTGTAGAAAAGAACCGCTGCAACAATCTGGGCTATGAGATCAATAAAGTCAGAGCCAAAAGAAGCAGCAA
 AATGTACTGAAGACTCGTTCTCAGATGCCCTACAAGTCTTCCATTACCAAGTAAAGATTCAATTTTCT
 GGGACTGAGAGTAAAACCATACCAATCAGGCCCTTTGAGATTTCTCTGTATGGCACCGTGGCCGAGAGTG
 AGAACATCCCATTCACTCTGCCTGAAGTTCCACAAAATAAGACCTACTCCTTCTAATTTACACAGAGGT
 AGATATTGGAGAACTACTCATGTTGAAGCTCAAATGGAAGAGTGATTCATCTTTAGCTGGTCAGACTGG
 TGGAGCAGTCCCGCTTCGCCATTGAGAAGATCAGAGTAAAAGCAGGAGAGACTCAGAAAAGGTGATCT
 TCTGTTCTAGGGAGAAAGTGTCTCATTTGCAGAAAAGAAAGGCACCTGCGGTATTTGTGAAATGCCATGA
 CAAGTCTCTGAATAAGAAGTCAGGC

ACGCGTACGCGGCCGCTCGAGCAGAAACTCATCTCAGAAGAGGATCTGGCAGCAAATGATATCCTGGATT
 ACAAGGATGACGACGATAAGGTTTAA

Protein Sequence:

>RC203766 representing NM_000237
 Red=Cloning site Green=Tags(s)

MESKALLVLTAVWLQSLTASRGGVAAADQRRDFIDIESKFALRTPEDTAEDTCHLIPGVAESVATCHFN
 HSSKTFMVIHGWTVTGMYESWVPKLVAAALYKREPDSNVI VVDWL SRAQEHYPVSAGYTKLVGQDVARFIN
 WMEEEFNYPLDNVHLLGYSLGAHAAGIAGSLTNKKVNRITGLDPAGPNFEYAEAPSRLSPDDADFVDVLH
 TFTRGSPGRSIGIQKPVGHVDIYPNGGTFQPGCNIGEAIRVIAERGLGDVDQLVKCSHERSIHLFIDSL
 NEENPSKAYRCSSEKAFEKGLCLSCRKNRCNNLGYEINKVRAKRSSKMYLKTRSQMPYKVFHYQVKIHF
 GTESEHTNQAFEISLYGTVAESENIPFTLPEVSTNKTYSFLLIYTEVDIGELMLKLKWSDSYFSWSDW
 WSSPGFAIQKIRVKAGETQKKVIFCSREKVSHLQKGPAPVFKCHDKSLNKKSG

TRTRPLEQKLI SEEDLAANDILDYKDDDDKV

Chromatograms:

https://cdn.origene.com/chromatograms/ja3082_f11.zip

Restriction Sites:

Sgfl-MluI

Domains: lipase, PLAT

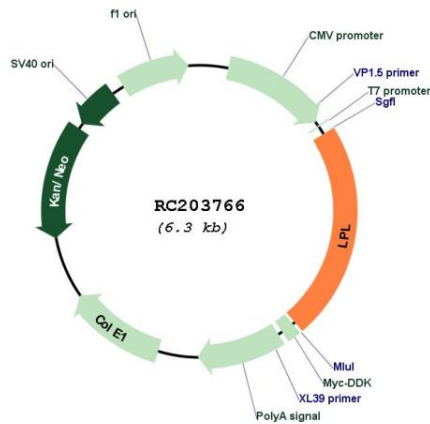
Protein Families: Druggable Genome

Protein Pathways: Alzheimer's disease, Glycerolipid metabolism, PPAR signaling pathway

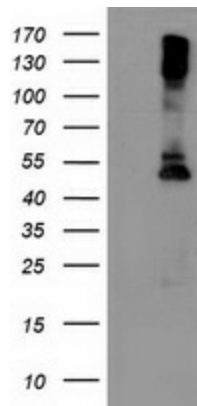
MW: 53.2 kDa

Gene Summary: LPL encodes lipoprotein lipase, which is expressed in heart, muscle, and adipose tissue. LPL functions as a homodimer, and has the dual functions of triglyceride hydrolase and ligand/bridging factor for receptor-mediated lipoprotein uptake. Severe mutations that cause LPL deficiency result in type I hyperlipoproteinemia, while less extreme mutations in LPL are linked to many disorders of lipoprotein metabolism. [provided by RefSeq, Jul 2008]

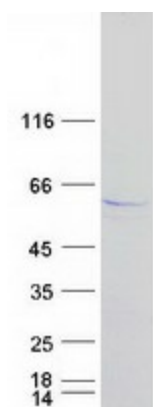
Product images:



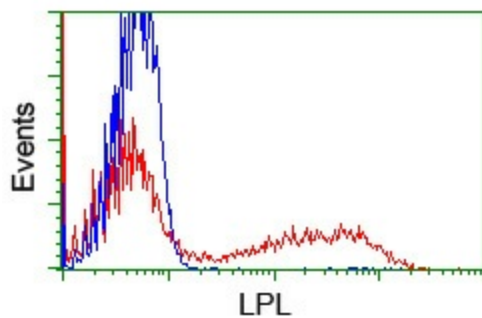
Circular map for RC203766



HEK293T cells were transfected with the pCMV6-ENTRY control (Cat# [PS100001], Left lane) or pCMV6-ENTRY LPL (Cat# RC203766, Right lane) cDNA for 48 hrs and lysed. Equivalent amounts of cell lysates (5 ug per lane) were separated by SDS-PAGE and immunoblotted with anti-LPL (Cat# [TA503793]). Positive lysates [LY400089] (100ug) and [LC400089] (20ug) can be purchased separately from OriGene.



Coomassie blue staining of purified LPL protein (Cat# [TP303766]). The protein was produced from HEK293T cells transfected with LPL cDNA clone (Cat# RC203766) using MegaTran 2.0 (Cat# [TT210002]).



HEK293T cells transfected with either RC203766 overexpress plasmid (Red) or empty vector control plasmid (Blue) were immunostained by anti-LPL antibody ([TA503793]), and then analyzed by flow cytometry.