

## Product datasheet for **RC203762**

### **RXYLT1 (NM\_014254) Human Tagged ORF Clone**

#### **Product data:**

Product Type:	Expression Plasmids
Product Name:	RXYLT1 (NM_014254) Human Tagged ORF Clone
Tag:	Myc-DDK
Symbol:	RXYLT1
Synonyms:	HP10481; MDDGA10; TMEM5
Mammalian Cell Selection:	Neomycin
Vector:	pCMV6-Entry (PS100001)
E. coli Selection:	Kanamycin (25 ug/mL)



[View online »](#)

**ORF Nucleotide Sequence:**

>RC203762 ORF sequence  
 Red=Cloning site Blue=ORF Green=Tags(s)

TTTTGTAATACGACTCACTATAGGGCGGCCGGAATTCGTCGACTGGATCCGGTACCGAGGAGATCTGCC  
 GCC**CGCATCGCC**

ATGCGGCTGACGCGGAAGCGGCTCTGCTCGTTTCTTATCGCCCTGTACTGCCTATTCTCCCTCTACGCTG  
 CCTACCACGTCTTCTTCGGGCGCCGCCAGGCGCCGGTCCCGCGGGGCTCAGGAAGGGGGC  
 GGCCCCGCGCGGAGAGACGCGCCGAGAACAGTCCACTTTGAAAGTGAAGAATGGAATCCTTGGAA  
 GGAGATGAAAAAATGAGCAACAACACAGATTTAAACTAGCCTTCAAATATTAGATAAATCCACGAAAG  
 GAAAAACAGATCTCAGTGTACAAATCTGGGGCAAAGCTGCCATTGGCTTGTATCTCTGGGAGCATATTTT  
 TGAAGGCTTACTTGATCCAGCGATGTGACTGCTCAATGGAGAGAAGGAAAGTCAATCGTAGGAAGAACA  
 CAGTACAGCTTCATCACTGGTCCAGCTGTAATACCAGGTAATCTCCGTTGATGTAATAATGTGGTAC  
 TCATTTTAAATGGAAGAGAAAAAGCAAAGATCTTTTATGCCACCCAGTGGTTACTTTATGCACAAAATTT  
 AGTGCAAATTCAAAACCTCCAGCATCTTGTCTGTTGTTTGTCTCGAAATGAACATTGTGATAATGAGTGG  
 ATAAACCCATTCCTCAAAGAAATGGAGGCTTCGTGGAGCTGCTTTTCATAATATATGACAGCCCTGGA  
 TTAATGACGTGGATGTTTTTCAGTGGCCTTAGGAGTAGCAACATACAGGAATTTTCTGTGGTGGAGGC  
 AAGTTGGTCAATGCTGCATGATGAGAGGCCATATTTATGTAATTTCTTAGGAACGATTTATGAAAATTC  
 TCCAGACAGGCACTAATGAACATTTTGAAGAAAGATGGGAACGATAAGCTTTGTTGGGTTTCAGCAAGAG  
 AACACTGGCAGCCTCAGGAAACAATGAAAGTCTTAAGAATTACCAAGATGCCTTGCTTCAGAGTGATCT  
 CACATTGTGCCCGGTCCGAGTAAACACAGAATGCTATCGAATCTATGAGGCTTGCCTATGGCTCCATT  
 CCTGTGGTGAAGACGTGATGACAGCTGGCAACTGTGGGAATACATCTGTGCACCAGGTGCTCCTCTGC  
 AGTTACTCAAGTCCATGGGTGCTCCCTTATCTTTATCAAGAAGTGAAGGAAGTCCCTGCTGTTTTAGA  
 AAAAGAGAAAAACTATAATTTTACAAGAAAAATGAAAGAAAGAAAAATGTTACTTCAAGTGGTATCAGCAC  
 TTCAAGACAGAGCTTAAATGAAATTTACTAATATTTTAGAAAGCTATTTTTAATGAATAATAAAAGT

**ACGCGT**ACGCGGCCGCTCGAGCAGAACTCATCTCAGAAGAGGATCTGGCAGCAATGATATCCTGGATT  
 ACAAGGATGACGACGATAAGGTTTAA

**Protein Sequence:**

>RC203762 protein sequence  
 Red=Cloning site Green=Tags(s)

MRLTRKRLCSFLIALYCLFSLYAAHVFFGRRRQAPAGSPRGLRKGAAAPARERRGREQSTLESEEWNPWE  
 GDEKNEQQHRFKTSLQILDKSTKGTDLVQIWKAAIGLYLWEHIFEGLLDPSDVTAQWREGKSIVGRT  
 QYSFITGPAVIPGYFSVDVNNVLLILNGREKAKIFYATQWLLYAQNLVQIQKLQHLAVVLLGNEHCDNEW  
 INPFLKRNGGFVELLFIIYDSPWINDVDVFWPLGVATYRNFVVEASWSMLHDERPYLCNFLTGTIYENS  
 SRQALMNILKKGNDKLCWVSAREHWQPQETNESLKNYQDALLQSDLTLCPVGVNTECYRIYEACSYGSI  
 PVVEDVMTAGNCNTSVHHGAPLQLLKSMPGPFIFIKNWKELPAVLEKEKTIILQEKIERRKMLLQWYQH  
 FKTELKMKFTNILESSFLMNNKS

**TR**TRPLEQKLISEEDLAANDILDYKDDDDKV

**Chromatograms:**

[https://cdn.origene.com/chromatograms/mk6750\\_c08.zip](https://cdn.origene.com/chromatograms/mk6750_c08.zip)

**Restriction Sites:**

SgfI-MluI

**Cloning Scheme:**


**ACCN:** NM\_014254

**ORF Size:** 1329 bp

**OTI Disclaimer:** The molecular sequence of this clone aligns with the gene accession number as a point of reference only. However, individual transcript sequences of the same gene can differ through naturally occurring variations (e.g. polymorphisms), each with its own valid existence. This clone is substantially in agreement with the reference, but a complete review of all prevailing variants is recommended prior to use. [More info](#)

**OTI Annotation:** This clone was engineered to express the complete ORF with an expression tag. Expression varies depending on the nature of the gene.

**Components:** The ORF clone is ion-exchange column purified and shipped in a 2D barcoded Matrix tube containing 10ug of transfection-ready, dried plasmid DNA (reconstitute with 100 ul of water).

**Reconstitution Method:**

1. Centrifuge at 5,000xg for 5min.
2. Carefully open the tube and add 100ul of sterile water to dissolve the DNA.
3. Close the tube and incubate for 10 minutes at room temperature.
4. Briefly vortex the tube and then do a quick spin (less than 5000xg) to concentrate the liquid at the bottom.
5. Store the suspended plasmid at -20°C. The DNA is stable for at least one year from date of shipping when stored at -20°C.

**RefSeq:** [NM\\_014254.3](#)

**RefSeq Size:** 1963 bp

**RefSeq ORF:** 1332 bp

**Locus ID:** 10329

**UniProt ID:** [Q9Y2B1](#)

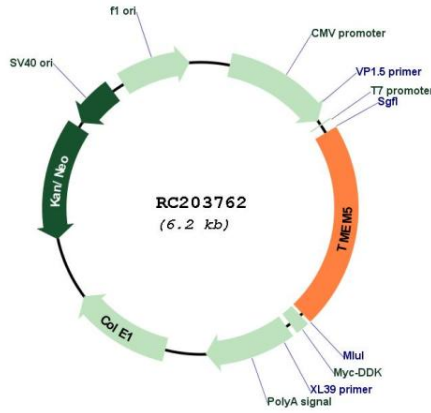
**Cytogenetics:** 12q14.2

**Protein Families:** Transmembrane

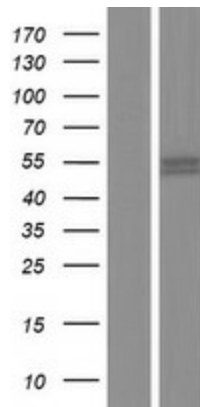
**MW:** 51.1 kDa

**Gene Summary:** This gene encodes a type II transmembrane protein that is thought to have glycosyltransferase function. Mutations in this gene result in cobblestone lissencephaly. Alternative splicing results in multiple transcript variants encoding different isoforms. [provided by RefSeq, May 2013]

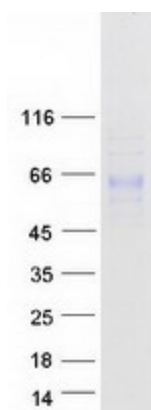
**Product images:**



Circular map for RC203762



Western blot validation of overexpression lysate (Cat# [LY415410]) using anti-DDK antibody (Cat# [TA50011-100]). Left: Cell lysates from untransfected HEK293T cells; Right: Cell lysates from HEK293T cells transfected with RC203762 using transfection reagent MegaTran 2.0 (Cat# [TT210002]).



Coomassie blue staining of purified RXYLT1 protein (Cat# [TP303762]). The protein was produced from HEK293T cells transfected with RXYLT1 cDNA clone (Cat# RC203762) using MegaTran 2.0 (Cat# [TT210002]).