

Product datasheet for RC203760

GLOD4 (NM_016080) Human Tagged ORF Clone

Product data:

Product Type:	Expression Plasmids
Product Name:	GLOD4 (NM_016080) Human Tagged ORF Clone
Tag:	Myc-DDK
Symbol:	GLOD4
Synonyms:	C17orf25; CGI-150; HC71
Mammalian Cell Selection:	Neomycin
Vector:	pCMV6-Entry (PS100001)
E. coli Selection:	Kanamycin (25 ug/mL)
ORF Nucleotide Sequence:	>RC203760 representing NM_016080 Red=Cloning site Blue=ORF Green=Tags(s)

TTTTGTAATACGACTCACTATAGGGCGGCCGGAATTCGTCGACTGGATCCGGTACCGAGGAGATCTGCC
GCC**CGATCGCC**

ATGGCTGCTCGCAGAGCTCTGCACTTCGTATTCAAAGTGGGAAACCGCTTCCAGACGGCGGTTTCTATC
GGGACGTCCTGGGGATGAAGTTCTGCGGCATGAGGAATTTGAAGAAGGCTGCAAAGCTGCCTGTAATGG
GCCTTATGATGGGAAATGGAGTAAACAATGGTGGGATTTGGCCTGAGGATGATCATTTTGTCCAGAA
CTGACTTACAATTATGGCGTCGGAGACTACAAGCTTGGCAATGACTTTATGGGAATCACGCTCGCTTCTA
GCCAGGCTGTGAGCAACGCCAGGAAGCTGGAGTGGCCACTGACGGAAGTTGCAGAAGGTGTTTTGAAAC
CGAGGCCCGGGAGGATATAAGTTCTATTTGCAGAATCGCAGTCTGCCTCAGTCAGATCCTGTATTA
GTAACCTAGCAGTGTCTGATCTTCAAAGTCTTGAACACTGTTGTAATCTACTGGGAATGAAAATTT
ATGAAAAAGATGAAGAAAAGCAAAGGGCTTTGCTGGGCTATGCTGATAACCAAGTGAAGCTGGAGCTACA
GGGCGTCAAGGGTGGGTGGACCATGCAGCAGCTTTTGGGAAGATTGCCTTCTCTTGCCCCAGAAAAGAG
TTGCCAGACTTAGAAGACTTGATGAAAAGGGAGAACCAGAAGATTCTGACTCCCCGGTGGAGCTGGACA
CCCCAGGAAAGCAACAGTACAGGTGGTCATTCTGGCCGACCTGACGGACATGAAATTTGCTTTGTCGG
GGATGAAGCATTCGAGAACTTTCTAAGATGGATCCAGAGGGAAGCAAATTTGTTGGATGATGCAATGGCA
GCAGATAAAAGTGACGAGTGGTTTGCCAAACACAATAAACCCAAAGCTTCAGGT

ACGCGTACGCGGCCGCTCGAGCAGAAACTCATCTCAGAAGAGGATCTGGCAGCAAATGATATCCTGGATT
ACAAGGATGACGACGATAAGGTTTAA



[View online »](#)

Protein Sequence: >RC203760 representing NM_016080
Red=Cloning site Green=Tags(s)

MAARRALHFVFKVGNRFQATARFYRDVLGMKVLRHEEFEEGCKAACNGPYDGKWSKTMVGFPEDDHFVAE
 LTNYNGVGDYKLGNDFMGITLASSQAVSNARKLEWPLTEVAEGVFETEAPGGYKFFLQNRSLPQSDPVLK
 VTLAVSDLQKSLNYWCNLLGMKIYEKDEEKQRALLGYADNQCKLELQGVKGGVDHAAAFGRIFAFSCPOKE
 LPDLEDLMKRENQKILTPLVSLDTPGKATVQVILADPDGHEICFVGDEAFRELSKMDPEGSKLLDDAMA
 ADKSDEWFAKHNKPKASG

TRTRPLEQKLISEEDLAANDILDYKDDDDKV

Chromatograms: https://cdn.origene.com/chromatograms/ja1489_a11.zip

Restriction Sites: SgfI-MluI

Cloning Scheme:



ACCN: NM_016080

ORF Size: 894 bp

OTI Disclaimer: The molecular sequence of this clone aligns with the gene accession number as a point of reference only. However, individual transcript sequences of the same gene can differ through naturally occurring variations (e.g. polymorphisms), each with its own valid existence. This clone is substantially in agreement with the reference, but a complete review of all prevailing variants is recommended prior to use. [More info](#)

OTI Annotation: This clone was engineered to express the complete ORF with an expression tag. Expression varies depending on the nature of the gene.

Components: The ORF clone is ion-exchange column purified and shipped in a 2D barcoded Matrix tube containing 10ug of transfection-ready, dried plasmid DNA (reconstitute with 100 ul of water).

Reconstitution Method:

1. Centrifuge at 5,000xg for 5min.
2. Carefully open the tube and add 100ul of sterile water to dissolve the DNA.
3. Close the tube and incubate for 10 minutes at room temperature.
4. Briefly vortex the tube and then do a quick spin (less than 5000xg) to concentrate the liquid at the bottom.
5. Store the suspended plasmid at -20°C. The DNA is stable for at least one year from date of shipping when stored at -20°C.

RefSeq: [NM_016080.3](#)

RefSeq Size: 1797 bp

RefSeq ORF: 897 bp

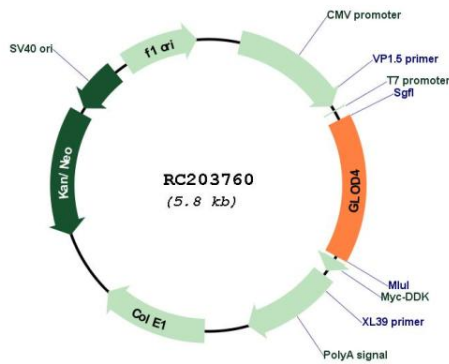
Locus ID: 51031

UniProt ID: [Q9HC38](#)

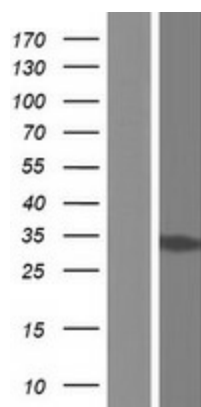
Cytogenetics: 17p13.3

MW: 33.1 kDa

Product images:



Circular map for RC203760



Western blot validation of overexpression lysate (Cat# [LY414205]) using anti-DDK antibody (Cat# [TA50011-100]). Left: Cell lysates from untransfected HEK293T cells; Right: Cell lysates from HEK293T cells transfected with RC203760 using transfection reagent MegaTran 2.0 (Cat# [TT210002]).