

Product datasheet for **RC203755**

TAF1 48 (TAF1A) (NM_139352) Human Tagged ORF Clone

Product data:

Product Type:	Expression Plasmids
Product Name:	TAF1 48 (TAF1A) (NM_139352) Human Tagged ORF Clone
Tag:	Myc-DDK
Symbol:	TAF1 48
Synonyms:	MGC:17061; RAFI48; SL1; TAFI48
Mammalian Cell Selection:	Neomycin
Vector:	pCMV6-Entry (PS100001)
E. coli Selection:	Kanamycin (25 ug/mL)



[View online »](#)

ORF Nucleotide Sequence:

>RC203755 ORF sequence
 Red=Cloning site Blue=ORF Green=Tags(s)

TTTTGTAATACGACTCACTATAGGGCGGCCGGAATTCGTCGACTGGATCCGGTACCGAGGAGATCTGCC
 GCC**CGCATCGCC**

ATGAGTGATTTTCAGTGAAGAATTAAGGGCCTGTGACAGATGATGAAGAAGTGA AACATCTGTGCTCA
 GTGGTGCAGGAATGCATTTTCCTTGCCCTCAAACATACGTAGAACTGTGGCCATTGGAGGGAAAAGGAG
 GAAGGATTTTGCTCAGACAACAAGTGCTTGTAAAGTTTATCCAAGAAGCTCTGCTGAAGCACCATGG
 CAGCAAGCTGCAGAATACATGTACAGTTATTTTCAGACCTTGAAGATTCAGATAGCTACAAAAGGCAGG
 CTGCACCTGAGATTATTTGGAAGCTCGGAAGTGAATTCTATTTTATCATCCAAAAGCAACATGGAGAG
 TTTCAATACTTTTGCTAACCGGATGAAAAATTTGGCGTCATGAATTATTTAAAGATCTCCTTACAACAT
 GCATTATACCTTTCGCATCATGGAATGCTTAAAGATGCTAAGAGAAATCTGAGTGAGGCAGAGACATGGA
 GACATGGTGAAAAACGCTTCCCGGAAATTAATCAACCTTATTCAGGCCTATAAAGGGCTTTTACA
 GTATTATACCTGGTCTGAAAAGAAGATGGAATTGTCAAAGCTTGATAAGGATGATTATGCTTACAATGCA
 GTAGCCCAAGGATGTGTTCAACCACAGCTGGAAGACATCTGCAAATATTTCTGCATTGATTA AAAATTCCTG
 GAGTTTGGGACCCTTTTGTGAAGAGTTATGTAGAAATGCTGGAATTCTATGGGGATCGAGATGGAGCCCA
 AGAGGTA CTACCAATTAATGCATATGATGAAAAGTTCCATCAAATCCAAATGCCCATATCTACTTATAC
 AACTTTCTAAAGAGACAGAAGGCACCAAGATCAA AATTGATAAGTGTGCTTAAGATTTTGTATCAGATTG
 TACCATCTCATAAATTGATGTTGGAATTCATACATTACTTAGAAAATCAGAAAAAGAAGAACACCGTAA
 ACTGGGTTGGAGGATATTTGGAGTCTTAGATTTTGCCGGATGCACTAAGAATATAACTGCTTGGAAA
 TACTTGGCAAAATATCTGAAAAATCTTAATGGGAAACACCTTGCCTGGTTCAAGAAGAGTGGAACT
 CCAGGAAAAACTGGTGGCCAGGGTTTCATTTTCAGCTACTTTTGGGCAAAAAGTGATTGGAAGGAAGATAC
 AGCTTTGGCCTGTGAGAAAGCTTTTGTGGCTGGTTTACTGTTAGGAAAAGGTTGTAGATATTTCCGGTAT
 ATTTTAAAGCAAGATCACCAAATCTTAGGGAAGAAAATTAAGCGGATGAAGAGATCTGTGAAAAATACA
 GTATTGTAATCCAAGACTC

ACGCGTACGCGGCCGCTCGAGCAGAACTCATCTCAGAAGAGGATCTGGCAGCAAATGATATCCTGGATT
 ACAAGGATGACGACGATAAGGTTTAA

Protein Sequence:

>RC203755 protein sequence
 Red=Cloning site Green=Tags(s)

MSDFSEELKGPVTDDEEVETSVLSGAGMHFPWLQTYVETVAIGGKRRKDF AQTTSACLSF IQEALLKHQW
 QQAAEYMYSYFQTLESDSYKRQAPEI IWKLGSEILFYHPKSNMESFNTFANRMKNIGVMNYL KISLQH
 ALYLLHHGMLKDAKRNLSEAETWRHGENTSSREILINLIQAYKGLLQYYTWSEKKMELSKLDKDDYAYNA
 VAQDVFNHWSKTSANISALIKIPGVWDPFVKS YVEMLEFYGDRDGAQEVL TNYAYDEKFPSPNAHIYLY
 NFLKRQKAPRSKLSVLKILYQIVPSHKLMEFH TLLRKSEKEEHRKLGLEVLFGVLDFA GCTKNITAWK
 YLAKYLKNILMGNHLAWVQE EWSRKNWPGFHF SYFWAKSDWKEDTALACEKAFVAGLLLGKGRYFRY
 ILKQDHQILGKKIKRMKRSVKKYSIVNPRL

TRTRPLEQKLISEEDLAANDILDYKDDDDKV

Chromatograms:

https://cdn.origene.com/chromatograms/mk6310_d06.zip

Restriction Sites:

Sgfl-Mlul

Cloning Scheme:


ACCN: NM_139352

ORF Size: 1353 bp

OTI Disclaimer: The molecular sequence of this clone aligns with the gene accession number as a point of reference only. However, individual transcript sequences of the same gene can differ through naturally occurring variations (e.g. polymorphisms), each with its own valid existence. This clone is substantially in agreement with the reference, but a complete review of all prevailing variants is recommended prior to use. [More info](#)

OTI Annotation: This clone was engineered to express the complete ORF with an expression tag. Expression varies depending on the nature of the gene.

Components: The ORF clone is ion-exchange column purified and shipped in a 2D barcoded Matrix tube containing 10ug of transfection-ready, dried plasmid DNA (reconstitute with 100 ul of water).

Reconstitution Method:

1. Centrifuge at 5,000xg for 5min.
2. Carefully open the tube and add 100ul of sterile water to dissolve the DNA.
3. Close the tube and incubate for 10 minutes at room temperature.
4. Briefly vortex the tube and then do a quick spin (less than 5000xg) to concentrate the liquid at the bottom.
5. Store the suspended plasmid at -20°C. The DNA is stable for at least one year from date of shipping when stored at -20°C.

RefSeq Size: 1796 bp

RefSeq ORF: 1011 bp

Locus ID: 9015

UniProt ID: [Q15573](#)

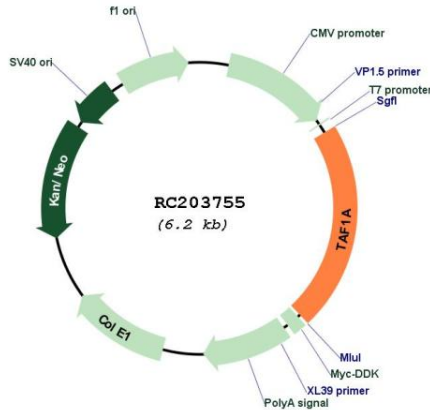
Cytogenetics: 1q41

Protein Families: Transcription Factors

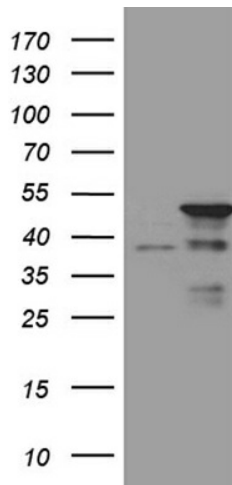
MW: 52.7 kDa

Gene Summary: This gene encodes a subunit of the RNA polymerase I complex, Selectivity Factor I (SLI). The encoded protein is a TATA box-binding protein-associated factor that plays a role in the assembly of the RNA polymerase I preinitiation complex. Alternate splicing results in multiple transcript variants encoding multiple isoforms.[provided by RefSeq, Jan 2011]

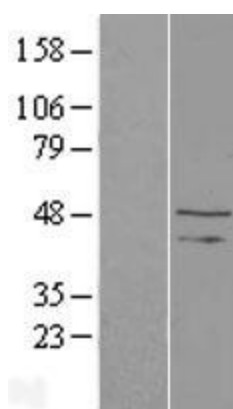
Product images:



Circular map for RC203755



HEK293T cells were transfected with the pCMV6-ENTRY control (Cat# [PS100001], Left lane) or pCMV6-ENTRY TAF1A (Cat# RC203755, Right lane) cDNA for 48 hrs and lysed. Equivalent amounts of cell lysates (5 ug per lane) were separated by SDS-PAGE and immunoblotted with anti-TAF1A (Cat# [TA811372])(1:500). Positive lysates [LY408297] (100ug) and [LC408297] (20ug) can be purchased separately from OriGene.



Western blot validation of overexpression lysate (Cat# [LY408297]) using anti-DDK antibody (Cat# [TA50011-100]). Left: Cell lysates from untransfected HEK293T cells; Right: Cell lysates from HEK293T cells transfected with RC203755 using transfection reagent MegaTran 2.0 (Cat# [TT210002]).