

Product datasheet for RC203753L1

MT3 (NM_005954) Human Tagged Lenti ORF Clone

Product data:

Product Type:	Expression Plasmids
Product Name:	MT3 (NM_005954) Human Tagged Lenti ORF Clone
Tag:	Myc-DDK
Symbol:	MT3
Synonyms:	GIF; GIFB; GRIF; ZnMT3
Mammalian Cell Selection:	None
Vector:	pLenti-C-Myc-DDK (PS100064)
E. coli Selection:	Chloramphenicol (34 ug/mL)
ORF Nucleotide Sequence:	The ORF insert of this clone is exactly the same as(RC203753).
Restriction Sites:	SgfI-MluI
Cloning Scheme:	

Cloning sites used for ORF Shuttling:



* The last codon before the Stop codon of the ORF.

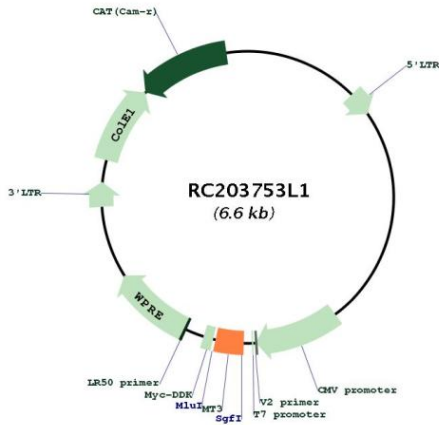
ACCN:	NM_005954
ORF Size:	204 bp



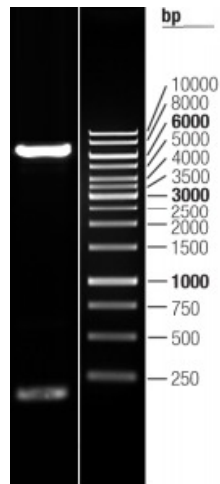
[View online »](#)

OTI Disclaimer:	The molecular sequence of this clone aligns with the gene accession number as a point of reference only. However, individual transcript sequences of the same gene can differ through naturally occurring variations (e.g. polymorphisms), each with its own valid existence. This clone is substantially in agreement with the reference, but a complete review of all prevailing variants is recommended prior to use. More info
OTI Annotation:	This clone was engineered to express the complete ORF with an expression tag. Expression varies depending on the nature of the gene.
Components:	The ORF clone is ion-exchange column purified and shipped in a 2D barcoded Matrix tube containing 10ug of transfection-ready, dried plasmid DNA (reconstitute with 100 ul of water).
Reconstitution Method:	<ol style="list-style-type: none">1. Centrifuge at 5,000xg for 5min.2. Carefully open the tube and add 100ul of sterile water to dissolve the DNA.3. Close the tube and incubate for 10 minutes at room temperature.4. Briefly vortex the tube and then do a quick spin (less than 5000xg) to concentrate the liquid at the bottom.5. Store the suspended plasmid at -20°C. The DNA is stable for at least one year from date of shipping when stored at -20°C.
RefSeq:	NM_005954.2
RefSeq Size:	599 bp
RefSeq ORF:	207 bp
Locus ID:	4504
UniProt ID:	P25713
Cytogenetics:	16q13
Domains:	metalthio
MW:	6.9 kDa
Gene Summary:	This gene is a member of the metallothionein family of genes. Proteins encoded by this gene family are low in molecular weight, are cysteine-rich, lack aromatic residues, and bind divalent heavy metal ions. This gene family member displays tissue-specific expression, and contains a threonine insert near its N-terminus and a glutamate-rich hexapeptide insert near its C-terminus relative to the proteins encoded by other gene family members. It plays an important role in zinc and copper homeostasis, and is induced under hypoxic conditions. The encoded protein is a growth inhibitory factor, and reduced levels of the protein are observed in the brains of individuals with some metal-linked neurodegenerative disorders such as Alzheimer's disease. [provided by RefSeq, Sep 2017]

Product images:



Circular map for RC203753L1



Double digestion of RC203753L1 using SgfI and MluI