

Product datasheet for RC203751L3

VSIG4 (NM_007268) Human Tagged Lenti ORF Clone

Product data:

Product Type:	Expression Plasmids
Product Name:	VSIG4 (NM_007268) Human Tagged Lenti ORF Clone
Tag:	Myc-DDK
Symbol:	VSIG4
Synonyms:	CRlg; Z39IG
Mammalian Cell Selection:	Puromycin
Vector:	pLenti-C-Myc-DDK-P2A-Puro (PS100092)
E. coli Selection:	Chloramphenicol (34 ug/mL)
ORF Nucleotide Sequence:	The ORF insert of this clone is exactly the same as(RC203751).
Restriction Sites:	SgfI-MluI
Cloning Scheme:	

Cloning sites used for ORF Shuttling:



* The last codon before the Stop codon of the ORF.

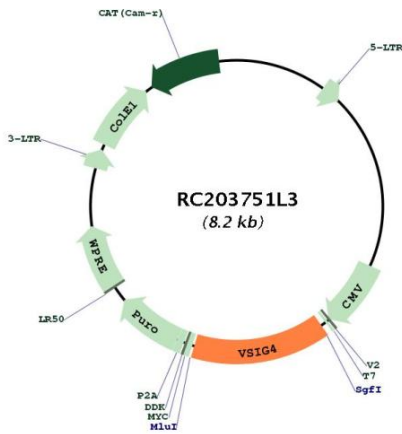
ACCN:	NM_007268
ORF Size:	1197 bp



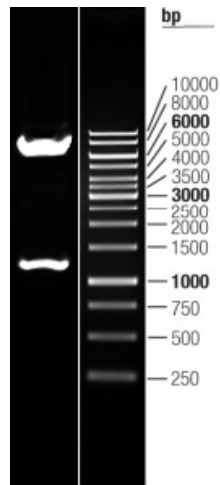
[View online »](#)

OTI Disclaimer:	The molecular sequence of this clone aligns with the gene accession number as a point of reference only. However, individual transcript sequences of the same gene can differ through naturally occurring variations (e.g. polymorphisms), each with its own valid existence. This clone is substantially in agreement with the reference, but a complete review of all prevailing variants is recommended prior to use. More info
OTI Annotation:	This clone was engineered to express the complete ORF with an expression tag. Expression varies depending on the nature of the gene.
Components:	The ORF clone is ion-exchange column purified and shipped in a 2D barcoded Matrix tube containing 10ug of transfection-ready, dried plasmid DNA (reconstitute with 100 ul of water).
Reconstitution Method:	<ol style="list-style-type: none">1. Centrifuge at 5,000xg for 5min.2. Carefully open the tube and add 100ul of sterile water to dissolve the DNA.3. Close the tube and incubate for 10 minutes at room temperature.4. Briefly vortex the tube and then do a quick spin (less than 5000xg) to concentrate the liquid at the bottom.5. Store the suspended plasmid at -20°C. The DNA is stable for at least one year from date of shipping when stored at -20°C.
RefSeq:	NM_007268.1
RefSeq Size:	1869 bp
RefSeq ORF:	1200 bp
Locus ID:	11326
UniProt ID:	Q9Y279
Cytogenetics:	Xq12
Domains:	ig, IGv, IGc2, IG
Protein Families:	Transmembrane
MW:	44 kDa
Gene Summary:	This gene encodes a v-set and immunoglobulin-domain containing protein that is structurally related to the B7 family of immune regulatory proteins. The encoded protein may be a negative regulator of T-cell responses. This protein is also a receptor for the complement component 3 fragments C3b and iC3b. Alternate splicing results in multiple transcript variants. [provided by RefSeq, May 2010]

Product images:



Circular map for RC203751L3



Double digestion of RC203751L3 using SgfI and MluI