

Product datasheet for **RC203740**

Calnexin (CANX) (NM_001024649) Human Tagged ORF Clone

Product data:

Product Type:	Expression Plasmids
Product Name:	Calnexin (CANX) (NM_001024649) Human Tagged ORF Clone
Tag:	Myc-DDK
Symbol:	Calnexin
Synonyms:	CNX; IP90; P90
Mammalian Cell Selection:	Neomycin
Vector:	pCMV6-Entry (PS100001)
E. coli Selection:	Kanamycin (25 ug/mL)



[View online »](#)

ORF Nucleotide Sequence:

>RC203740 ORF sequence
 Red=Cloning site Blue=ORF Green=Tags(s)

TTTTGTAATACGACTCACTATAGGGCGGCCGGGAATTCGTCGACTGGATCCGGTACCGAGGAGATCTGCC
 GCC**GCGATCGCC**

ATGGAAGGGAAGTGGTTGCTGTGTATGTTACTGGTCTTGAAGTCTATTGTTGAGGCTCATGATGGAC
 ATGATGATGATGTGATTGATATTGAGGATGACCTTGACGATGTCATTGAAGAGGTAGAAGACTCAAACC
 AGATACCACTGCTCCTCCTTCATCTCCCAAGGTTACTTACAAAGCTCCAGTTCCAACAGGGGAAGTATAT
 TTTGCTGATTCTTTTACAGAGGAACTCTGTCAGGGTGGATTTTATCCAAGCCAAGAAAGACGATACCG
 ATGATGAAATTGCCAAATATGATGGAAAGTGGGAGGTAGAGGAAATGAAGGAGTCAAAGCTTCCAGGTGA
 TAAAGGACTTGTGTTGATGTCTCGGGCCAAGCATCATGCCATCTGCTAAACTGAACAAGCCCTTCTCTG
 TTTGACACCAAGCCTCTCATTGTTCAAGTATGAGGTTAATTTCCAAATGGAATAGAATGTGGTGGTGCCT
 ATGTGAAACTGCTTTCTAAAACACCAGAACTCAACCTGGATCAGTCCATGACAAGACCCCTTATACGAT
 TATGTTTGGTCCAGATAAATGTGGAGAGGACTATAAACTGCACCTCATCTCCGACACAAAAACCCAAA
 ACGGGTATCTATGAAGAAAAACATGCTAAGAGGCCAGATGCAGATCTGAAGACCTATTTTACTGATAAGA
 AAACACATCTTTACACACTAATCTTGAATCCAGATAATAGTTTTGAAACTACTGGTTGACCAATCTGTGGT
 GAATAGTGGAAATCTGCTCAATGACATGACTCCTCCTGTAATCCTTACAGTGAATTTGAGGACCCAGAA
 GACCGGAAGCCCGAGGATTGGGATGAAAGACAAAAATCCAGATCCAGAAGCTGTCAAGCCAGATGACT
 GGGATGAAGATGCCCTGCTAAGATTCCAGATGAAGAGGCCACAAAAACCCGAAGGCTGGTTAGATGATGA
 GCCTGAGTACGTACCTGATCCAGACGCAGAGAAACCTGAGGATTGGGATGAAGACATGGATGGAGAATGG
 GAGGCTCCTCAGATTGCCAACCTAGATGTGAGTCAGCTCCTGGATGTGGTGTCTGGCAGCGACCTGTGA
 TTGACAACCCCAATTATAAAGGCAAAATGGAAGCCTCCTATGATTGACAATCCCAGTTACCAGGGAATCTG
 GAAACCCAGGAAAAATACCAAATCCAGATTTCTTTGAAGATCTGGAACCTTTCAGAATGACTCCTTTTGT
 GCTATTGTTTGGAGCTGTGGTCCATGACCTCTGACATTTTTTTTTGACAACCTTATCATTGTGCTGATC
 GAAGAATAGTTGATGATTGGGCAATGATGGATGGGGCCTGAAGAAAGCTGCTGATGGGGCTGCTGAGCC
 AGGCGTTGTGGGCAGATGATCGAGGCAGCTGAAGAGCGCCCGTGGCTGTGGGTAGTCTATATTCTAACT
 GTAGCCCTTCTGTGTTCTGTTATCCTCTTCTGCTGTTCTGGAAGAAAACAGACCAGTGGTATGGAGT
 ATAAGAAAAGTATGCACCTCAACCGGATGTGAAGGAAGAGGAAGAAGAGAAGGAAGAGGAAAAGGACAA
 GGGAGATGAGGAGGAGGAAGGAGAAGAGAACTGAAGAGAAAACAGAAAAGTATGCTGAAGAAGATGGT
 GGCAGTGTGATCAAGAGGAGGAAGACAGAAAACCTAAAGCAGAGGAGGATGAAATTTTGAACAGATCAC
 CAAGAAAACAGAAAGCCACGAAGAGAG

ACGCGTACGCGGCCGCTCGAGCAGAAACTCATCTCAGAAGAGGATCTGGCAGCAAATGATATCCTGGATT
 ACAAGGATGACGACGATAAGGTTTAA

Protein Sequence:

>RC203740 protein sequence
 Red=Cloning site Green=Tags(s)

MEGKWLMLLLVLTGTAIVEAHDGHDDVDIEDDLDDVIEEVEDSKPDTTAPPSSPKVITYKAPVPTGEVY
 FADSFDRGTL SGWILSKAKKDDTDDEIAKYDGKWEVEEMKESKLPDGKGLVLMRAKHHAISAKLNKPFLL
 FDTKPLIVQYEVNFQNGIECGGAYVKLLSKTPELNLDQFHDKTPYTIMFGPKCGEDYKLFIFRHKNP
 TGIYEEKHAKRPDADLKYFTDKKTHLYTLILNPDNSFEILVDQSVVNSGNLLNDMTPPVNPSREIEDPE
 DRKPEDWDERPKIPDPEAVKPDWDEDAPAKIPDEEATKPEGWLDDEPEYVPDPAEKPEDWDEDMGGEW
 EAPQIANPRCESAPGCGVWQRPVIDNPNYKWKWPPMIDNPSYQGIWKPRKIPNPDFFEDLEPFRMTPFS
 ATGLELWSMTSDIFFDNFIICADRRIVDDWANDGWGLKKAADGAAEPGVVGMIEAAEERPWLWVYVILT
 VALPVFLVILFCCSGKKQTSMEYKKTDPQPDVKEEEEEKEEEKDKGDEEEEGEEKLEEKQKSDAEEEDG
 GTVSQEEEDRKPKAEDEILNRSRNRKPRRE

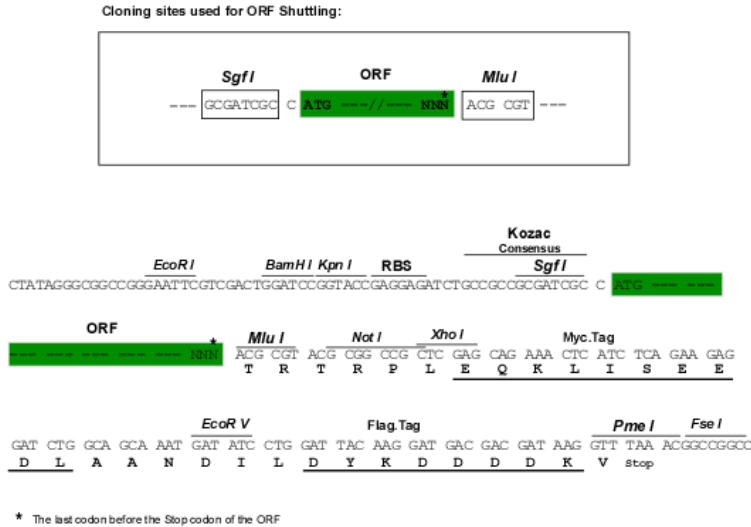
TRTRPLEQKLISEEDLAANDILDYKDDDDKV

Chromatograms:

https://cdn.origene.com/chromatograms/mk6278_e09.zip

Restriction Sites: SgfI-MluI

Cloning Scheme:



ACCN: NM_001024649

ORF Size: 1776 bp

OTI Disclaimer: The molecular sequence of this clone aligns with the gene accession number as a point of reference only. However, individual transcript sequences of the same gene can differ through naturally occurring variations (e.g. polymorphisms), each with its own valid existence. This clone is substantially in agreement with the reference, but a complete review of all prevailing variants is recommended prior to use. [More info](#)

OTI Annotation: This clone was engineered to express the complete ORF with an expression tag. Expression varies depending on the nature of the gene.

Components: The ORF clone is ion-exchange column purified and shipped in a 2D barcoded Matrix tube containing 10ug of transfection-ready, dried plasmid DNA (reconstitute with 100 ul of water).

- Reconstitution Method:**
1. Centrifuge at 5,000xg for 5min.
 2. Carefully open the tube and add 100ul of sterile water to dissolve the DNA.
 3. Close the tube and incubate for 10 minutes at room temperature.
 4. Briefly vortex the tube and then do a quick spin (less than 5000xg) to concentrate the liquid at the bottom.
 5. Store the suspended plasmid at -20°C. The DNA is stable for at least one year from date of shipping when stored at -20°C.

Note: Plasmids are not sterile. For experiments where strict sterility is required, filtration with 0.22um filter is required.

RefSeq: [NM_001024649.2](#)

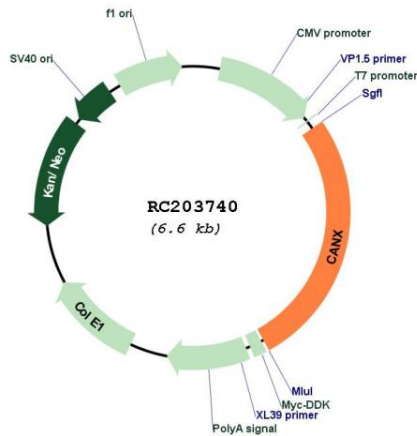
RefSeq Size: 4900 bp

RefSeq ORF: 1779 bp

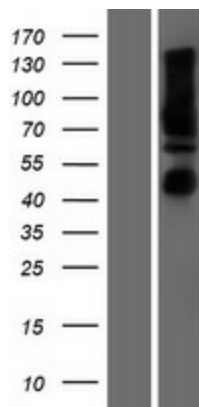
Locus ID: 821
UniProt ID: [P27824](#)
Cytogenetics: 5q35.3
Protein Families: Druggable Genome, Transmembrane
Protein Pathways: Antigen processing and presentation
MW: 67.6 kDa

Gene Summary: This gene encodes a member of the calnexin family of molecular chaperones. The encoded protein is a calcium-binding, endoplasmic reticulum (ER)-associated protein that interacts transiently with newly synthesized N-linked glycoproteins, facilitating protein folding and assembly. It may also play a central role in the quality control of protein folding by retaining incorrectly folded protein subunits within the ER for degradation. Alternatively spliced transcript variants encoding different isoforms have been described. [provided by RefSeq, Jun 2018]

Product images:



Circular map for RC203740



Western blot validation of overexpression lysate (Cat# [LY422525]) using anti-DDK antibody (Cat# [TA50011-100]). Left: Cell lysates from untransfected HEK293T cells; Right: Cell lysates from HEK293T cells transfected with RC203740 using transfection reagent MegaTran 2.0 (Cat# [TT210002]).