

Product datasheet for RC203739

TMEM59L (NM_012109) Human Tagged ORF Clone

Product data:

Product Type:	Expression Plasmids
Product Name:	TMEM59L (NM_012109) Human Tagged ORF Clone
Tag:	Myc-DDK
Symbol:	TMEM59L
Synonyms:	BSMAP; C19orf4
Vector:	pCMV6-Entry (PS100001)
E. coli Selection:	Kanamycin (25 ug/mL)
Cell Selection:	Neomycin
ORF Nucleotide Sequence:	>RC203739 ORF sequence Red=Cloning site Blue=ORF Green=Tags(s)

TTTTGTAATACGACTCACTATAGGGCGCCGGGAATTCGTCGACTGGATCCGGTACCGAGGAGATCTGCC
GCC**CGGATCGCC**

ATGGCTGCGGTGGCGCTGATGCCACCGCCGCTGCTGCTGCTGCTGCTGTTGGCGTCGCCGCCGCCCGCT
CCGCGCCGTCCGCCCGCATCCCTTCGCCCCAGCTCGGGACACGCAGAACTGCCAGCTGCGGTGCC
CGACCGGACCTCGGCCCGCAGCCCTCGCAGCGGGGCTGGAGGGCGCCTCCGAGTCTCCCTATGACAGA
GCCGTTCTGATCAGCGCTTGCGAGCGTGCTGCCGCTTCTCCATCTGCCGATTTGTGCCAGAAAGCT
CCAAGCCCAATGCCACCCAAACTGAGTGTGAAGCAGCCTGCGTGGAAAGCCTATGTGAAGGAGGCAGAGCA
GCAGGCCCTGTAGCCACGGCTGCTGGAGCCAGCCCGGAGCCTGAGCCGGAGCAGAAGAGAAAGGTCCTG
GAGGCTCCAAGTGGGGCCCTCTCCCTCTGGACTTGTTCACCCCTCTGCAATGACCTCGTCAACTCAG
CCCAGGGATTTGTCTCCTCCACCTGGACATACTACTTGCAGACTGACAATGGGAAAGTGGTGGTGTTC
GACTCAGCCCATAGTGGAGAGCCTCGGCTTCCAGGGGGCCGCTGCAGCGCGTGGAGGTGACCTGGCGA
GGCTCCCACCTGAAGCCCTGGAGGTGCACGTGGACCTGTAGGCCCCCTGGACAAGGTGAGGAAGGCCA
AGATCCGAGTCAAGACCAGCAGCAAGGCCAAGGTGGAGTCTGAAGAGCCACAGGACAATGACTTCCCTCAG
TTGCATGTCCCGCGCTCGGGTCTGCCTCGCTGGATCCTGGCCTGCTGCCTCTTCCCTCCGCTGCTGGT
ATGCTGTGGCTGAGCTGCTCCACCTGGTGACCGCGCCTGGCCAGCACCTCAAGTCCAGCCTCTGACCC
TGGAGCAGCACAAGGGCTTCATGATGGAGCCCGATTGGCCCTGTACCCGCCCGCTCCACGCCTGTGA
GGACAGCCTACCACCTACAAGCTGAAGCTGGACCTGACCAAGCTG

ACGGTACGGGCCGCTCGAGCAGAAACTCATCTCAGAAGAGGATCTGGCAGCAATGATATCCTGGATT
ACAAGGATGACGACGATAAGGTTTAA



[View online »](#)

Protein Sequence: >RC203739 protein sequence
 Red=Cloning site Green=Tags(s)

MAAVALMPPPLLLLLLLASPPAASAPSARDPFAPQLGDTQNCQLRCRDRDLGPQPSQAGLEGASESPYDR
 AVLISACERGCRLFSICRFVARSSKPNATQTECEAACVEAYVKEAEQQACSHGCWSQPAEPEPEQKRKVL
 EAPSGALSLDLFSTLCNDLVNSAQGFVSTWTYYLQTDNGKVVVFQTPQPIVESLGFQGGRLQRVEVTWR
 GSHPEALEVHVDVPVGPLDKVRKAKIRVKTSSKAKVESEEPQDNDFLSCMSRRSGLPRWILACCLFSLVLV
 MLWLSCSTLVTAPGQHLKFQPLTLEQHKGFMMEPDWPLYPPPSHACEDSLPPYKLLDLTKL

TRTRPLEQKLISEEDLAANDILDYKDDDDKV

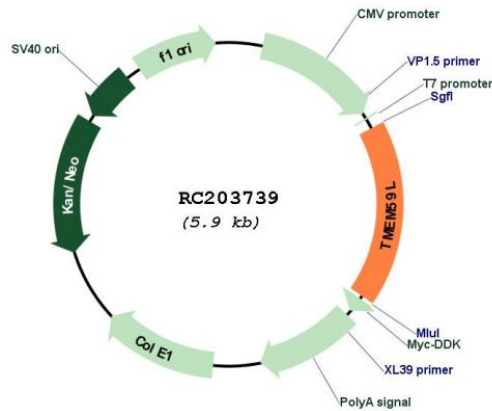
Chromatograms: https://cdn.origene.com/chromatograms/mk6302_f11.zip

Restriction Sites: SgfI-MluI

Cloning Scheme:



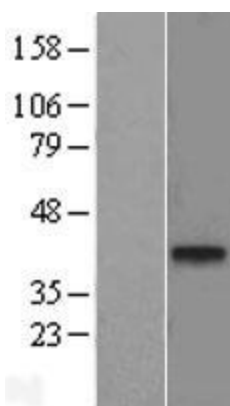
Plasmid Map:



ACCN: NM_012109

ORF Size:	1026 bp
OTI Disclaimer:	The molecular sequence of this clone aligns with the gene accession number as a point of reference only. However, individual transcript sequences of the same gene can differ through naturally occurring variations (e.g. polymorphisms), each with its own valid existence. This clone is substantially in agreement with the reference, but a complete review of all prevailing variants is recommended prior to use. More info
OTI Annotation:	This clone was engineered to express the complete ORF with an expression tag. Expression varies depending on the nature of the gene.
RefSeq:	NM_012109.3
RefSeq Size:	1712 bp
RefSeq ORF:	1029 bp
Locus ID:	25789
UniProt ID:	Q9UK28 , A0A024R7L4
Protein Families:	Transmembrane
MW:	37.6 kDa
Gene Summary:	This gene encodes a predicted type-I membrane glycoprotein. The encoded protein may play a role in functioning of the central nervous system. [provided by RefSeq, Jul 2008]

Product images:



Western blot validation of overexpression lysate (Cat# [LY415978]) using anti-DDK antibody (Cat# [TA50011-100]). Left: Cell lysates from untransfected HEK293T cells; Right: Cell lysates from HEK293T cells transfected with RC203739 using transfection reagent MegaTran 2.0 (Cat# [TT210002]).