

Product datasheet for **RC203738**

MTO1 (NM_012123) Human Tagged ORF Clone

Product data:

Product Type:	Expression Plasmids
Product Name:	MTO1 (NM_012123) Human Tagged ORF Clone
Tag:	Myc-DDK
Symbol:	MTO1
Synonyms:	CGI-02; COXPD10
Vector:	pCMV6-Entry (PS100001)
E. coli Selection:	Kanamycin (25 ug/mL)
Cell Selection:	Neomycin



[View online »](#)

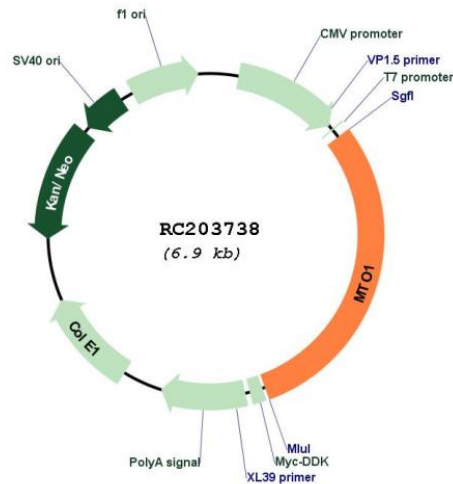
ORF Nucleotide
Sequence:

>RC203738 ORF sequence
Red=Cloning site Blue=ORF Green=Tags(s)

TTTTGTAATACGACTCACTATAGGGCGGCCGGGAATTCGTCGACTGGATCCGGTACCGAGGAGATCTGCC
GCCGCGATCGCC

ATGTTCTACTTCCGAGGCTGTGGCCGTTGGGTCGCGGTTTCCTTCACCAAGCAGCAATTTCCGTTGGCAC
GGTTGAGCAGTGACAGCGCGGCCCGGACTCCGCACCTCGACGTGATAGTCATTGGTGGAGGACATGC
CGGACTGAGGCAGCACCCGCCCGCTCGGTGCGGCTCTCGACTCTGCTCCTCACTACCCGCTGGAC
ACGATCGGTGAGATGTCATGTAATCCTTCTTTGGTGGCATCGGAAAGGGACATTTAATGAGGGAAGTAG
ATGCCCTGGATGGCTGTGTTCTCGCATCTGTGACCAGTCTGGGTACATTATAAAGTATTAACCAGCGG
TAAGGGACCAGCTGTGTGGGCTGTGAGAGCTCAGATTGATAGGAACTCTATAACAGAACATGCAGAAA
GAAATCTGTAATACACCACTGCTTACTGTTCCAGGAGGAGCTGTAGAAGATCTTATTCTTACAGAACCAG
AGCCTGAACACACTGGGAAATGCCGTGTCAGTGGGTTGTTTTGGTGGATGGAAGCACAGTATATGCAGA
GAGTGTGATTCTGACTACTGGGACATTTCTGAGAGGCATGATTGTAATTGGATTGGAGACGCATCCAGCA
GGACGTTTAGGGGATCAGCCTTCTATAGGATTGGCTCAGACACTGGAGAAGTTAGGGTTTGTGGTGGAA
GGTTGAAGACTGGGACTCCACCCGAATTGCCAAAGAGTCCATTAAATTCAGTATTCTAAACAAGCATAT
ACCGGACAATCCATCCATACCATTACAGCTTTACCAATGAGACAGTATGGATTAAGCCAGAAGATCAGCTG
CCATGTTACTTGACTCACACCAACCCTAGAGTGGATGAGATTGTCCTTAAGAACCCTCACCTAATAGTC
ATGTTAAAGAAACGACAAGAGGACCTCGATACTGTCCCTCCATTGAATCAAAAAGTTTTGCGTTTTCCAAA
CCGCTACATCAGGTTTGGTTGGAACCTGAAGGAATGGATTCTGACCTTATCTACCCACAGGGGTTATCT
ATGACGCTACCAGCTGAGTTACAAGAGAAAATGATCACATGCATCAGAGGCTTGGAGAAAGCTAAAGTGA
TTCAGCCAGGCTACGGTGTTCAGTATGATTACTTAGATCCCCGTCAGATCACCCCTCCCTGGAGACTCA
TTTGGTTCAACGACTCTTCTTTGCTGGACAGATCAATGGCACCCTGGTTATGAGGAAGCTGCAGCTCAA
GGTGTGATAGCCGAATCAACGCCAGTCTTCGGGTCAGTCGCAAGCCTCCCTTTGTGGTTAGCCGAACAG
AAGGTTACATAGGAGTCTTGATTGATGACCTCACTACTCTGGCACCAGTGAACCATACCGCATGTTTAC
CAGCCGAGTAGAGTTCGGTTTGTCACTGCGCCCTGATAATGCTGACAGCCGGCTCACACTGCGAGGGTAT
AAAGACGCTGGCTGTGTGCCAACACGATATGAAAGAGCTTGTGGATGAAGTCTTCTTTAGAAGAAG
GCATTTCTGTGTTGAAATCTATTGAGTTTTTGTGCTCTAAATGGAAAAAATTAATCCAGAGGCTTCTAT
AAGTACTAGTAGAAGTCTGCCTGTCAGAGCTCTCGATGTTCTGAAGTATGAGGAAGTTGACATGGATTCA
TTAGCCAAGGCTGTTCCAGAGCCCTTGAAGAAGTATACTAAATGTAGAGAGCTGGCTGAAAGACTGAAAA
TAGAAGCCAATTATGAATCAGTGTGTTCCATCAACTACAAGAAATAAAGGGAGTTCAGCAAGATGAAGC
TCTCCAAGTCCAAAAGACCTAGATTATTTGACTATCAGGGATGTGTCTTTGTCCATGAAGTTCGAGAG
AAACTACATTTTGTGCTCCACAGACGATCGGGGCTGCTAGTCGCATACCCGGAGTAACACCTGCCGCCA
TCATCAATCTGCTGAGATTTGTGAAGACCACTCAACGAAGACAGTCGGCTATGAATGAATCATCCAAGAC
TGATCAATACTTATGTGATGCAGACAGACTTCAAGAGAGAGAGTTA

ACGCGTACGCGGCCGCTCGAGCAGAACTCATCTCAGAAGAGGATCTGGCAGCAATGATATCCTGGATT
ACAAGGATGACGACGATAAGGTTTAA

Plasmid Map:


ACCN: NM_012123

ORF Size: 2076 bp

OTI Disclaimer: The molecular sequence of this clone aligns with the gene accession number as a point of reference only. However, individual transcript sequences of the same gene can differ through naturally occurring variations (e.g. polymorphisms), each with its own valid existence. This clone is substantially in agreement with the reference, but a complete review of all prevailing variants is recommended prior to use. [More info](#)

OTI Annotation: This clone was engineered to express the complete ORF with an expression tag. Expression varies depending on the nature of the gene.

RefSeq: [NM_012123.4](#)

RefSeq Size: 2928 bp

RefSeq ORF: 2079 bp

Locus ID: 25821

UniProt ID: [Q9Y2Z2](#)

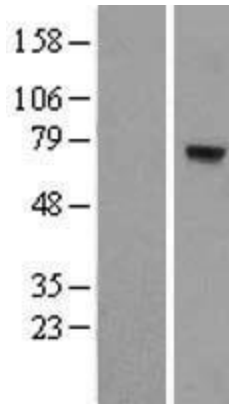
Domains: GIDA

Protein Families: Druggable Genome

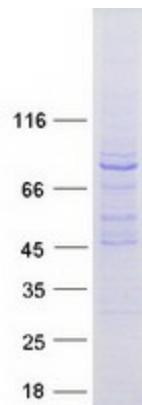
MW: 77.3 kDa

Gene Summary:

This gene encodes a mitochondrial protein thought to be involved in mitochondrial tRNA modification. The encoded protein may also play a role in the expression of the non-syndromic and aminoglycoside-induced deafness phenotypes associated with a specific mutation in the mitochondrial 12S rRNA gene. Multiple transcript variants encoding different isoforms have been found for this gene. [provided by RefSeq, Jul 2008]

Product images:

Western blot validation of overexpression lysate (Cat# [LY415973]) using anti-DDK antibody (Cat# [TA50011-100]). Left: Cell lysates from untransfected HEK293T cells; Right: Cell lysates from HEK293T cells transfected with RC203738 using transfection reagent MegaTran 2.0 (Cat# [TT210002]).



Coomassie blue staining of purified MTO1 protein (Cat# [TP303738]). The protein was produced from HEK293T cells transfected with MTO1 cDNA clone (Cat# RC203738) using MegaTran 2.0 (Cat# [TT210002]).