

Product datasheet for **RC203735**

ALIX (PDCD6IP) (NM_013374) Human Tagged ORF Clone

Product data:

Product Type:	Expression Plasmids
Product Name:	ALIX (PDCD6IP) (NM_013374) Human Tagged ORF Clone
Tag:	Myc-DDK
Symbol:	ALIX
Synonyms:	AIP1; ALIX; DRIP4; HP95
Mammalian Cell Selection:	Neomycin
Vector:	pCMV6-Entry (PS100001)
E. coli Selection:	Kanamycin (25 ug/mL)



[View online »](#)

**ORF Nucleotide
Sequence:**

>RC203735 ORF sequence
 Red=Cloning site Blue=ORF Green=Tags(s)

TTTTGTAATACGACTCACTATAGGGCGGCCGGGAATTCGTCGACTGGATCCGGTACCGAGGAGATCTGCC
 GCC**CGCATCGCC**

ATGGCGACATTTCATCTCGGTGCAGCTGAAAAAGACCTCAGAGGTGGACCTGGCCAAGCCGCTGGTGAAGT
 TCATCCAGCAGACTTACCCAAGCGCGGGGAAGAGCAGGCCAGTACTGCCGCGCGGGAGGAGCTCAG
 CAAGCTGCGCCGCGCCGAGTCCGGTCCGCTGGACAAGCACGAGGGCGCGCTCGAGACGCTCCTGAGA
 TATTATGATCAGATTTGTCTATTGAACCCAAATCCCATTTTCTGAAAAACAGATCTGCTTGACATTTA
 CCTGGAAGGATGCTTTCGATAAAGGTTCACTTTTTGGAGGCTCTGTAAACTGGCTTTGCAAGCTTAGG
 ATATGAAAAGAGCTGTGTGTTCAATTGTGCAGCCTTAGCTAGCCAAATGCAGCAGAACAGAACCTG
 GATAATGATGAAGGATTGAAAATCGCTGCTAACATTACCAGTTTGTAGTGGTGCCTTTTACATATTA
 AAGAGACGGTTTTATCTGCCTTAAGTCGAGAGCCGACCGTGGACATATCTCCAGATACTGTTGGGACCT
 CAGTCTTATTATGCTGGCACAGGCTCAAGAAGTATTTTTTTAAAAGCCACAAGAGATAAAATGAAAGAT
 GCCATCATAGCTAAATGGCTAATCAGGCTGCAGATTATTTGGTGATGCTTTCAAACAGTGTCAATACA
 AAGATACTCTCCCAAGGAGGTGTTCCCTGTCTGGCTGCAAAGCACTGTATCATGCAGGCCAATGCTGA
 GTACCATCAGTCTATCCTGGCAAACAGCAGAAGAAATTTGGAGAAGAAATGCAAGGTTACAGCATGCA
 GCAGAAGTGAATAAACAGTGGCATCTCGCTATGATGAATATGTTAATGTGAAGGATTTTCTGACAAAA
 TCAATCGTGCCCTTGTGTCAGCAAAGAAGGATAATGACTTCATTTATCATGATCGAGTCCAGACCTTAA
 AGATCTAGATCCTATTGGCAAAGCCACACTTGTGAAATCTACCCCGTCAATGTACCCATCAGTCAGAAA
 TTTACTGATCTGTTTGAAGATGGTCCCCTGTGAGTACAGCAGTCTTTGGCTGCCTATAATCAGAGGA
 AAGCCGATTTGGTTAACAGATCAATTGCTCAGATGAGAGAAGCCACCACCTTTGGCAAATGGGGTCTAGC
 TTCCTTAATCTCCAGCAGCAATTGAAGATGTGTCTGGAGACACTGTACCTCAGTCTATATTGACTAAA
 TCCAGATCTGTGATTGAACAGGGAGGCATCCAGACTGTTGATCAGTTGATTAAGAAGTGCCTGAATTAC
 TGCAACGAAAATAGAGAAATCCTAGATGAGTCATTAAGGTTGTTGGATGAAGAAGAAGCAACCGATAATGA
 TTTAAGAGCAAAATTTAAGGAACGTTGGCAAAGGACACCATCCAATGAACTGTATAAGCCTTTAAGAGCA
 GAGGGAACCAACTTCAGAACAGTTTTAGATAAAGCTGTGCAGGCAGATGGACAAGTGAAGAATGTTACC
 AGTCTCATCGTGACACCATCGTGCTTTTGTGTAAGCCAGAGCCTGAGCTGAATGCTGCCATCCCTCTGC
 TAATCCAGCAAAGACCATGCAGGCAGTGAAGTTGTAATGTCTTAAAATCCTTATTGTCAAATCTTGAT
 GAAGTAAAGAAGGAAAGAGAGGGTCTGGAGAATGACTTGAATCTGTGAATTTTGACATGACAAGCAAGT
 TTTTGACAGCCCTGGCTCAAGATGGTGTGATAAATGAAGAAGCTTTTCTGTTACTGAACTAGATCGAGT
 CTATGGAGGCTTACAACATAAAGTCCAAGAATCTCTAAAGAAAACAGGAGGGACTTCTAAAAATATTCAG
 GTCTCACATCAGGAATTTTCAAAAATGAAACAATCTAATAATGAAGCTAACTTAAGAGAAGAAGTTTTGA
 AGAATTTAGTACTGCATATGACAACCTTGTGAACTTGTAGCTAATTTGAAGGAAGGCACAAAGTTTTTA
 CAATGAGTTGACTGAAATCCTGGTCAGGTTCCAGAACAATGCAGTGATATAGTTTTGCACGGAAGACA
 GAAAGAGATGAACTTTAAAGGACTTGAACAAGCATTGCCAGAGAACCTAGTGTCTCTCAATTCCTA
 CACCTGCGTATCAGTCTCACCAGCAGGAGGACATGCACCAACTCCTCCAACCTCAGCGCCAAGAACCAT
 GCCGCTACTAAGCCCCAGCCCCAGCCAGGCTCCACCACCTGTGCTTCCAGCAAATCGAGTCTCTTCT
 GCTACTGTCCATCTCCAGTGGGGCTGGGACTGCTGCGCCAGCTCCATCACAACGCCTGGCTCAGCTC
 CTCTCCACAGGCGCAGGACCACCTATCCCACCTATCCAGGATATCCTGGGATTGCCAAATGCCAT
 GCCCATGGGCTATAATCCTTATGCGTATGGCCAGTATAATATGCCATATCCACCAGTGTATCACCAGAGT
 CCTGGACAGGCTCCATACCCGGGACCCAGCAGCTTCATACCCCTTCCCTCAGCCCCACAGCAGTCTT
 ACTATCCACAGCAG

ACGCGTACGCGGCGGCTCGAGCAGAAACTCATCTCAGAAGAGGATCTGGCAGCAAATGATATCTGGATT
 ACAAGGATGACGACGATAAGGTTTAA

Protein Sequence: >RC203735 protein sequence
 Red=Cloning site Green=Tags(s)

MATFISVQLKKTSEVDLAKPLVKFIQQTYPSSGEEQAQYCRAAEELSKLRRAAVGRPLDKHEGALETLR
 YYDQICSIIEPKFPFSENQICLTFWKFADFSGSLFSGSVKLALASLGYEKSCVLFNCAALASQIAAEQNL
 DNDEGLKIAAKHYQFASGAFHLIKETVLSALSREPTVDISPDTVGTLSLIMLAQAQEVFFLKATRDKMKD
 AIIAKLANQAADYFGDAFKQCQYKDTLPKEVFPVLAAKHCIMQANA EYHQSI LAKQKKFGEEIARLQHA
 AELIKTVASRYDEYVNVKDFSDKINRALAAAKDNDFIYHDRVPLDKLDPIGKATLVKSTPVNVPISQK
 FTDLFEKMVPVSVQSLAAYNQKADLVNRSIAQMREATTLANGVLASLNLPAAIEDVSGDTPVQSILTK
 SRSVIEQGGIQTVDQLIKELPELLQRNREILDESLRLLDEEEATDNDLRAKFKERWQRTSPNELYKPLRA
 EGTNFRVTLDKAVQADGQVKECYQSHRDTIVLLCKPEPELNAAIPSANPAKTMQGSEVVNVLKSLLSNLD
 EVKKEREGLENDLKSVNFDMTSKFLTALAQDGVINEEALSVTELDREVYGLTTKVQESLKKQEGLLKNIQ
 VSHQEF SKMKQSNNEANLREEVLKNLATAYDNFVELVANLKEGTFYNELTEILVRFQNKCSDIVFARKT
 ERDELLKDLQQSIAREPSAPSIPTPAYQSSPAGGHAPTPTPAPRTMPPTKPQPPARPPPVL PANRAPS
 ATAPSPVGAGTAAPAPSQTPGSAPPPQAQPPYPTYPGYGQCMPMPMGYNPYAYGQYNMPYPPVYHQ
 PGQAPYPGPQPSYFPQPPQSYYPQQ

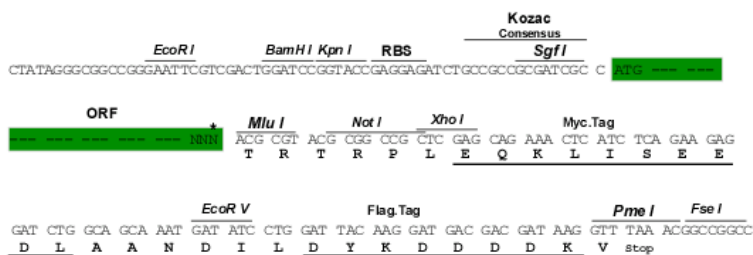
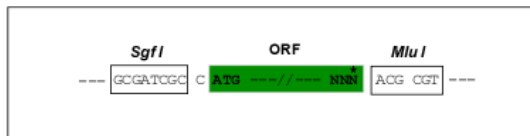
TRTRPLEQKLISEEDLAANDILDYKDDDDKV

Chromatograms: https://cdn.origene.com/chromatograms/mk6236_f11.zip

Restriction Sites: SgfI-MluI

Cloning Scheme:

Cloning sites used for ORF Shuttling:

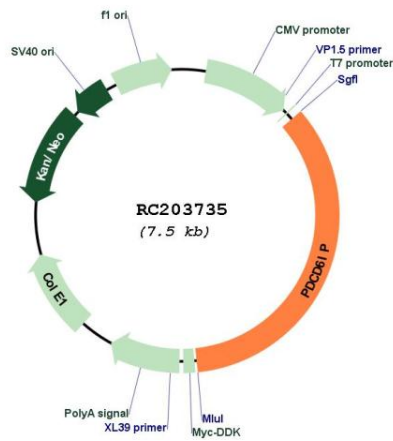


* The last codon before the Stop codon of the ORF

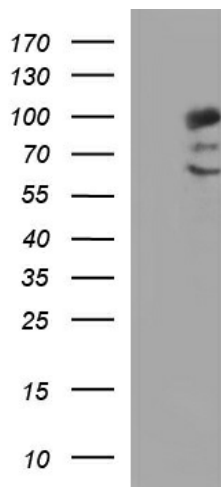
ACCN:	NM_013374
ORF Size:	2604 bp
OTI Disclaimer:	The molecular sequence of this clone aligns with the gene accession number as a point of reference only. However, individual transcript sequences of the same gene can differ through naturally occurring variations (e.g. polymorphisms), each with its own valid existence. This clone is substantially in agreement with the reference, but a complete review of all prevailing variants is recommended prior to use. More info
OTI Annotation:	This clone was engineered to express the complete ORF with an expression tag. Expression varies depending on the nature of the gene.
Components:	The ORF clone is ion-exchange column purified and shipped in a 2D barcoded Matrix tube containing 10ug of transfection-ready, dried plasmid DNA (reconstitute with 100 ul of water).
Reconstitution Method:	<ol style="list-style-type: none">1. Centrifuge at 5,000xg for 5min.2. Carefully open the tube and add 100ul of sterile water to dissolve the DNA.3. Close the tube and incubate for 10 minutes at room temperature.4. Briefly vortex the tube and then do a quick spin (less than 5000xg) to concentrate the liquid at the bottom.5. Store the suspended plasmid at -20°C. The DNA is stable for at least one year from date of shipping when stored at -20°C.
Note:	Plasmids are not sterile. For experiments where strict sterility is required, filtration with 0.22um filter is required.
RefSeq:	NM_013374.6
RefSeq Size:	5972 bp
RefSeq ORF:	2607 bp
Locus ID:	10015
UniProt ID:	Q8WUM4
Cytogenetics:	3p22.3
Domains:	BRO1
Protein Families:	Druggable Genome
Protein Pathways:	Endocytosis
MW:	96 kDa

Gene Summary:

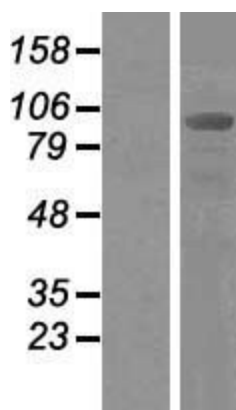
This gene encodes a protein that functions within the ESCRT pathway in the abscission stage of cytokinesis, in intraluminal endosomal vesicle formation, and in enveloped virus budding. Studies using mouse cells have shown that overexpression of this protein can block apoptosis. In addition, the product of this gene binds to the product of the PDCD6 gene, a protein required for apoptosis, in a calcium-dependent manner. This gene product also binds to endophilins, proteins that regulate membrane shape during endocytosis. Overexpression of this gene product and endophilins results in cytoplasmic vacuolization, which may be partly responsible for the protection against cell death. Several alternatively spliced transcript variants encoding different isoforms have been found for this gene. Related pseudogenes have been identified on chromosome 15. [provided by RefSeq, Jan 2012]

Product images:


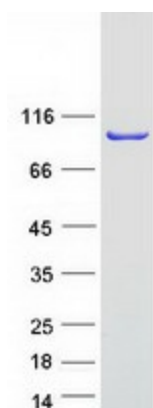
Circular map for RC203735



HEK293T cells were transfected with the pCMV6-ENTRY control (Cat# [PS100001], Left lane) or pCMV6-ENTRY PDCD6IP (Cat# RC203735, Right lane) cDNA for 48 hrs and lysed. Equivalent amounts of cell lysates (5 ug per lane) were separated by SDS-PAGE and immunoblotted with anti-PDCD6IP (Cat# [TA507312]). Positive lysates [LY415634] (100ug) and [LC415634] (20ug) can be purchased separately from OriGene.



Western blot validation of overexpression lysate (Cat# [LY415634]) using anti-DDK antibody (Cat# [TA50011-100]). Left: Cell lysates from untransfected HEK293T cells; Right: Cell lysates from HEK293T cells transfected with RC203735 using transfection reagent MegaTran 2.0 (Cat# [TT210002]).



Coomassie blue staining of purified PDCD6IP protein (Cat# [TP303735]). The protein was produced from HEK293T cells transfected with PDCD6IP cDNA clone (Cat# RC203735) using MegaTran 2.0 (Cat# [TT210002]).